

<b>Appendix A:SAR System performance Check Plots</b>
<b>Table of contents</b>
<b>System Performance Check-D750</b>
<b>System Performance Check-D835</b>
<b>System Performance Check-D1750</b>
<b>System Performance Check-D1900</b>
<b>System Performance Check-D2450</b>
<b>System Performance Check-D2600</b>

Test Laboratory: CTI SAR Lab

**Systemcheck-750-Head****DUT: D750V3 - SN1088; Type: D750V3; Serial: SN1088**

Communication System: UID 0, CW (0); Communication System Band: D750 (750.0 MHz); Frequency: 750 MHz; Duty Cycle: 1:1

Medium parameters used:  $f = 750$  MHz;  $\sigma = 0.853$  S/m;  $\epsilon_r = 43.03$ ;  $\rho = 1000$  kg/m<sup>3</sup>

Phantom section: Flat Section

## DASY Configuration:

- Probe: EX3DV4 - SN7769; ConvF(10.96, 10.96, 10.96); Calibrated: 9/20/2022;
- Sensor-Surface: 1.4mm (Mechanical Surface Detection),  $z = 1.0, 31.0$
- Electronics: DAE4 Sn1458; Calibrated: 1/11/2023
- Phantom: Twin SAM V5.0; Type: QD000P40CD; Serial: 1875
- DASY52 52.8.8(1222); SEMCAD X 14.6.10(7331)

**Configuration/d=15mm,Pin=250mW/Area Scan (8x15x1):** Measurement grid:  $dx=15$ mm,  $dy=15$ mm

Maximum value of SAR (measured) = 2.41 W/kg

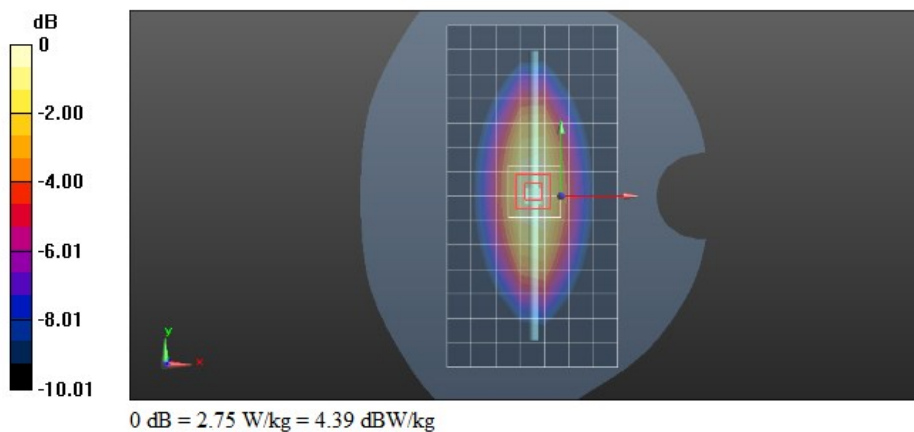
**Configuration/d=15mm,Pin=250mW/Zoom Scan (5x5x7)/Cube 0:** Measurement grid:  $dx=8$ mm,  $dy=8$ mm,  $dz=5$ mm

Reference Value = 50.00 V/m; Power Drift = 0.04 dB

Peak SAR (extrapolated) = 3.15 W/kg

**SAR(1 g) = 2.04 W/kg; SAR(10 g) = 1.36 W/kg**

Maximum value of SAR (measured) = 2.75 W/kg



Test Laboratory: CTI SAR Lab

**Systemcheck-750-Head****DUT: D750V3 - SN1088; Type: D750V3; Serial: SN1088**

Communication System: UID 0, CW (0); Communication System Band: D750 (750.0 MHz); Frequency: 750 MHz; Duty Cycle: 1:1

Medium parameters used:  $f = 750$  MHz;  $\sigma = 0.855$  S/m;  $\epsilon_r = 43.03$ ;  $\rho = 1000$  kg/m<sup>3</sup>

Phantom section: Flat Section

## DASY Configuration:

- Probe: EX3DV4 - SN7769; ConvF(10.96, 10.96, 10.96); Calibrated: 9/20/2022;
- Sensor-Surface: 1.4mm (Mechanical Surface Detection),  $z = 1.0, 31.0$
- Electronics: DAE4 Sn1458; Calibrated: 1/11/2023
- Phantom: Twin SAM V5.0; Type: QD000P40CD; Serial: 1875
- DASY52 52.8.8(1222); SEMCAD X 14.6.10(7331)

**Configuration/d=15mm,Pin=250mW/Area Scan (8x15x1):** Measurement grid:  $dx=15$ mm,  $dy=15$ mm

Maximum value of SAR (measured) = 2.35 W/kg

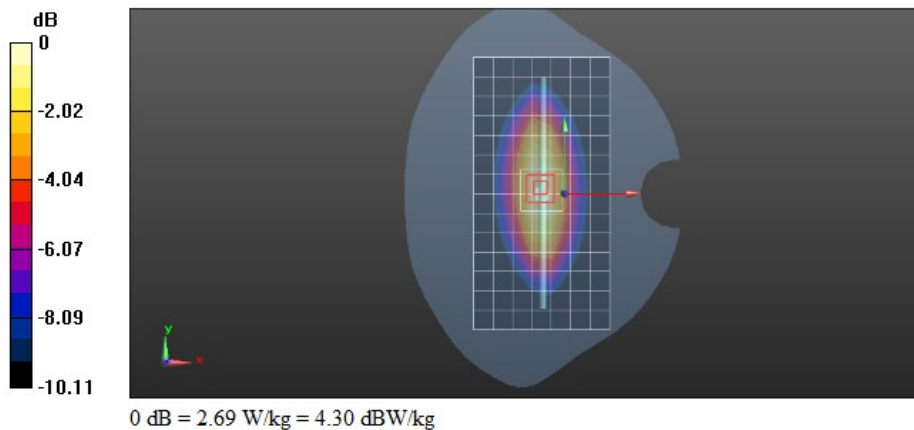
**Configuration/d=15mm,Pin=250mW/Zoom Scan (5x5x7)/Cube 0:** Measurement grid:  $dx=8$ mm,  $dy=8$ mm,  $dz=5$ mm

Reference Value = 49.44 V/m; Power Drift = -0.06 dB

Peak SAR (extrapolated) = 3.12 W/kg

**SAR(1 g) = 1.97 W/kg; SAR(10 g) = 1.31 W/kg**

Maximum value of SAR (measured) = 2.69 W/kg



Test Laboratory: CTI SAR Lab

**Systemcheck-750-Head****DUT: D750V3 - SN1088; Type: D750V3; Serial: SN1088**

Communication System: UID 0, CW (0); Communication System Band: D750 (750.0 MHz); Frequency: 750 MHz; Duty Cycle: 1:1

Medium parameters used:  $f = 750$  MHz;  $\sigma = 0.921$  S/m;  $\epsilon_r = 39.899$ ;  $\rho = 1000$  kg/m<sup>3</sup>

Phantom section: Flat Section

## DASY Configuration:

- Probe: EX3DV4 - SN7769; ConvF(10.96, 10.96, 10.96); Calibrated: 9/20/2022;
- Sensor-Surface: 1.4mm (Mechanical Surface Detection),  $z = 1.0, 31.0$
- Electronics: DAE4 Sn1458; Calibrated: 1/11/2023
- Phantom: Twin SAM V5.0; Type: QD000P40CD; Serial: 1875
- DASY52 52.8.8(1222); SEMCAD X 14.6.10(7331)

**Configuration/d=15mm,Pin=250mW/Area Scan (8x15x1):** Measurement grid:  $dx=15$ mm,  $dy=15$ mm

Maximum value of SAR (measured) = 2.39 W/kg

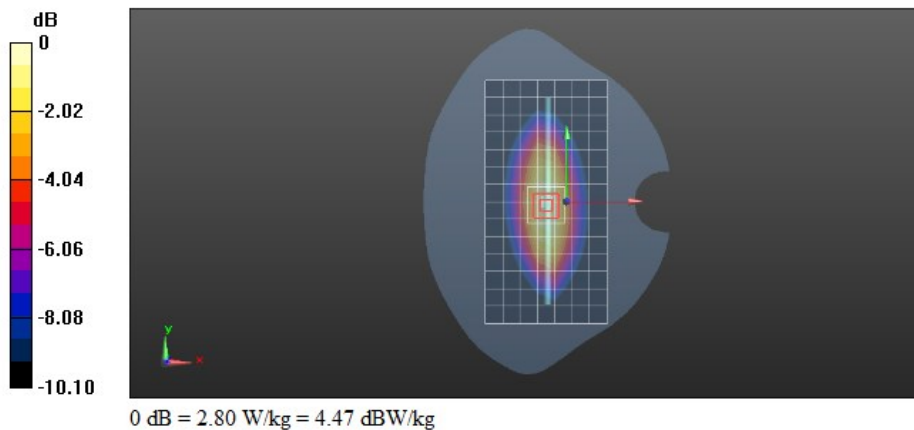
**Configuration/d=15mm,Pin=250mW/Zoom Scan (5x5x7)/Cube 0:** Measurement grid:  $dx=8$ mm,  $dy=8$ mm,  $dz=5$ mm

Reference Value = 48.17 V/m; Power Drift = -0.00 dB

Peak SAR (extrapolated) = 3.24 W/kg

**SAR(1 g) = 2.04 W/kg; SAR(10 g) = 1.35 W/kg**

Maximum value of SAR (measured) = 2.80 W/kg



Test Laboratory: CTI SAR Lab

**Systemcheck-750-Head****DUT: D750V3 - SN1088; Type: D750V3; Serial: SN1088**

Communication System: UID 0, CW (0); Communication System Band: D750 (750.0 MHz); Frequency: 750 MHz; Duty Cycle: 1:1

Medium parameters used:  $f = 750$  MHz;  $\sigma = 0.874$  S/m;  $\epsilon_r = 43.273$ ;  $\rho = 1000$  kg/m<sup>3</sup>

Phantom section: Flat Section

## DASY Configuration:

- Probe: EX3DV4 - SN7769; ConvF(10.96, 10.96, 10.96); Calibrated: 9/20/2022;
- Sensor-Surface: 1.4mm (Mechanical Surface Detection),  $z = 1.0, 31.0$
- Electronics: DAE4 Sn1458; Calibrated: 1/11/2023
- Phantom: Twin SAM V5.0; Type: QD000P40CD; Serial: 1875
- DASY52 52.8.8(1222); SEMCAD X 14.6.10(7331)

**Configuration/d=15mm,Pin=250mW/Area Scan (8x15x1):** Measurement grid:  $dx=15$ mm,  $dy=15$ mm

Maximum value of SAR (measured) = 2.46 W/kg

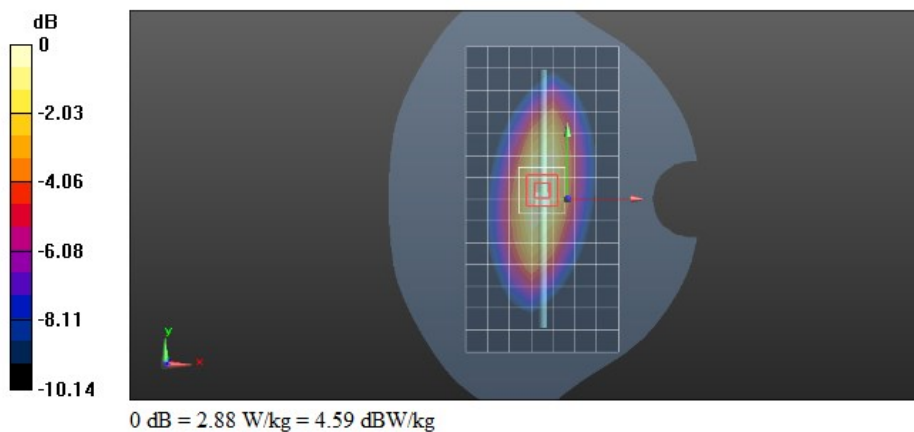
**Configuration/d=15mm,Pin=250mW/Zoom Scan (5x5x7)/Cube 0:** Measurement grid:  $dx=8$ mm,  $dy=8$ mm,  $dz=5$ mm

Reference Value = 49.50 V/m; Power Drift = 0.10 dB

Peak SAR (extrapolated) = 3.31 W/kg

**SAR(1 g) = 2.11 W/kg; SAR(10 g) = 1.4 W/kg**

Maximum value of SAR (measured) = 2.88 W/kg





Test Laboratory: CTI SAR Lab

**Systemcheck-835-Head****DUT: Dipole 835 MHz D835V2; Type: D835V2; Serial: D835V2 - SN:4d193**

Communication System: UID 0, CW (0); Communication System Band: D835(835.0 MHz); Frequency: 835 MHz; Duty Cycle: 1:1

Medium parameters used:  $f = 835$  MHz;  $\sigma = 0.891$  S/m;  $\epsilon_r = 39.697$ ;  $\rho = 1000$  kg/m<sup>3</sup>

Phantom section: Flat Section

DASY Configuration:

- Probe: EX3DV4 - SN7328; ConvF(9.98, 9.98, 9.98); Calibrated: 3/23/2023;
- Sensor-Surface: 1.4mm (Mechanical Surface Detection),  $z = 1.0, 31.0$
- Electronics: DAE4 Sn1458; Calibrated: 1/11/2023
- Phantom: Twin SAM V5.0; Type: QD000P40CD; Serial: 1875
- DASY52 52.8.8(1222); SEMCAD X 14.6.10(7331)

**Configuration/d=15mm,Pin=250mW/Area Scan (8x12x1):** Measurement grid:  $dx=15$ mm,  $dy=15$ mm

Maximum value of SAR (measured) = 2.73 W/kg

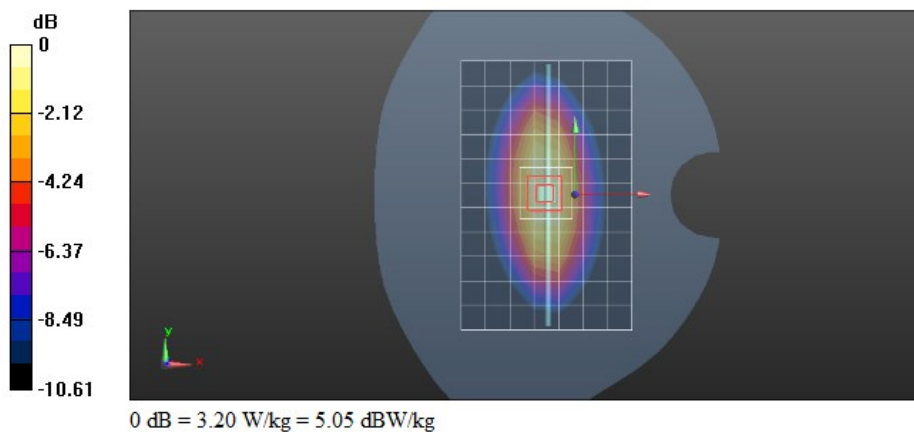
**Configuration/d=15mm,Pin=250mW/Zoom Scan (5x5x7)/Cube 0:** Measurement grid:  $dx=8$ mm,  $dy=8$ mm,  $dz=5$ mm

Reference Value = 52.37 V/m; Power Drift = 0.04 dB

Peak SAR (extrapolated) = 3.68 W/kg

**SAR(1 g) = 2.34 W/kg; SAR(10 g) = 1.54 W/kg**

Maximum value of SAR (measured) = 3.20 W/kg



Test Laboratory: CTI SAR Lab

**Systemcheck-835-Head****DUT: Dipole 835 MHz D835V2; Type: D835V2; Serial: D835V2 - SN:4d193**

Communication System: UID 0, CW (0); Communication System Band: D835(835.0 MHz); Frequency: 835 MHz;Duty Cycle: 1:1

Medium parameters used:  $f = 835$  MHz;  $\sigma = 0.892$  S/m;  $\epsilon_r = 39.723$ ;  $\rho = 1000$  kg/m<sup>3</sup>

Phantom section: Flat Section

DASY Configuration:

- Probe: EX3DV4 - SN7328; ConvF(9.98, 9.98, 9.98); Calibrated: 3/23/2023;
- Sensor-Surface: 1.4mm (Mechanical Surface Detection),  $z = 1.0, 31.0$
- Electronics: DAE4 Sn1458; Calibrated: 1/11/2023
- Phantom: Twin SAM V5.0; Type: QD000P40CD; Serial: 1875
- DASY52 52.8.8(1222); SEMCAD X 14.6.10(7331)

**Configuration/d=15mm,Pin=250mW/Area Scan (8x12x1):** Measurement grid:  $dx=15$ mm,  $dy=15$ mm

Maximum value of SAR (measured) = 2.81 W/kg

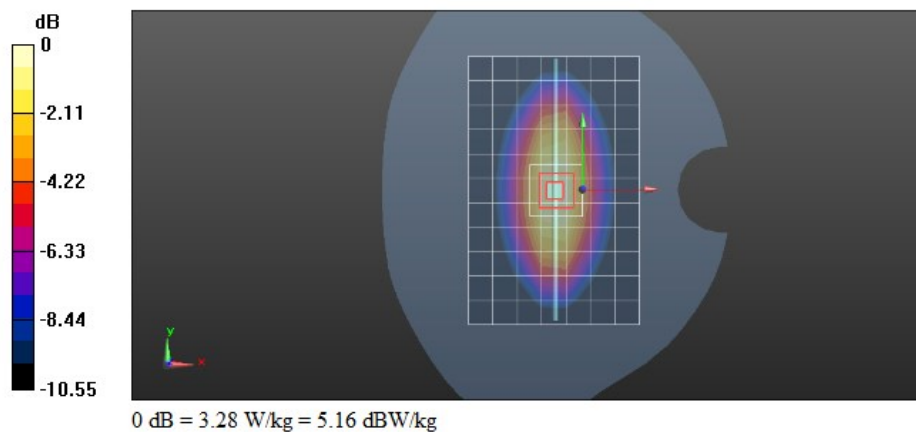
**Configuration/d=15mm,Pin=250mW/Zoom Scan (5x5x7)/Cube 0:** Measurement grid:  $dx=8$ mm,  $dy=8$ mm,  $dz=5$ mm

Reference Value = 52.47 V/m; Power Drift = 0.12 dB

Peak SAR (extrapolated) = 3.79 W/kg

**SAR(1 g) = 2.4 W/kg; SAR(10 g) = 1.58 W/kg**

Maximum value of SAR (measured) = 3.28 W/kg



Test Laboratory: CTI SAR Lab

**Systemcheck-835-Head****DUT: Dipole 835 MHz D835V2; Type: D835V2; Serial: D835V2 - SN:4d193**

Communication System: UID 0, CW (0); Communication System Band: D835(835.0 MHz); Frequency: 835 MHz; Duty Cycle: 1:1

Medium parameters used:  $f = 835$  MHz;  $\sigma = 0.889$  S/m;  $\epsilon_r = 42.891$ ;  $\rho = 1000$  kg/m<sup>3</sup>

Phantom section: Flat Section

DASY Configuration:

- Probe: EX3DV4 - SN7328; ConvF(9.98, 9.98, 9.98); Calibrated: 3/23/2023;
- Sensor-Surface: 1.4mm (Mechanical Surface Detection),  $z = 1.0, 31.0$
- Electronics: DAE4 Sn1458; Calibrated: 1/11/2023
- Phantom: Twin SAM V5.0; Type: QD000P40CD; Serial: 1875
- DASY52 52.8.8(1222); SEMCAD X 14.6.10(7331)

**Configuration/d=15mm,Pin=250mW/Area Scan (8x12x1):** Measurement grid:  $dx=15$ mm,  $dy=15$ mm

Maximum value of SAR (measured) = 2.97 W/kg

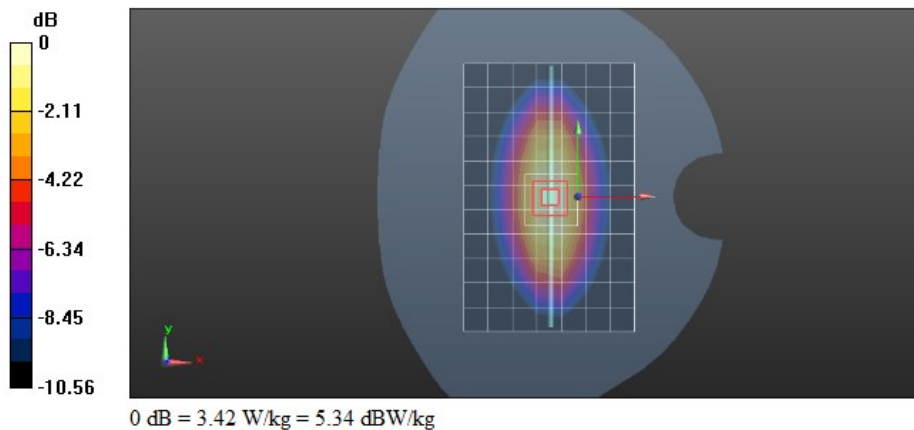
**Configuration/d=15mm,Pin=250mW/Zoom Scan (5x5x7)/Cube 0:** Measurement grid:  $dx=8$ mm,  $dy=8$ mm,  $dz=5$ mm

Reference Value = 54.21 V/m; Power Drift = 0.00 dB

Peak SAR (extrapolated) = 3.99 W/kg

**SAR(1 g) = 2.51 W/kg; SAR(10 g) = 1.65 W/kg**

Maximum value of SAR (measured) = 3.42 W/kg





Test Laboratory: CTI SAR Lab

**Systemcheck 1750-Head****DUT: D1750V2 - SN1134; Type: D1750V2; Serial: SN1134**

Communication System: UID 0, CW (0); Communication System Band: D1750 (1750.0 MHz); Frequency: 1750 MHz; Duty Cycle: 1:1

Medium parameters used:  $f = 1750$  MHz;  $\sigma = 1.316$  S/m;  $\epsilon_r = 40.718$ ;  $\rho = 1000$  kg/m<sup>3</sup>

Phantom section: Flat Section

## DASY Configuration:

- Probe: EX3DV4 - SN7328; ConvF(8.49, 8.49, 8.49); Calibrated: 3/23/2023;
- Sensor-Surface: 1.4mm (Mechanical Surface Detection),  $z = 1.0, 31.0$
- Electronics: DAE4 Sn1458; Calibrated: 1/11/2023
- Phantom: Twin SAM V5.0; Type: QD000P40CD; Serial: 1875
- DASY52 52.8.8(1222); SEMCAD X 14.6.10(7331)

**Configuration/d=10mm, Pin=250 mW/Area Scan (8x8x1):** Measurement grid:  $dx=15$ mm,  $dy=15$ mm

Maximum value of SAR (measured) = 10.8 W/kg

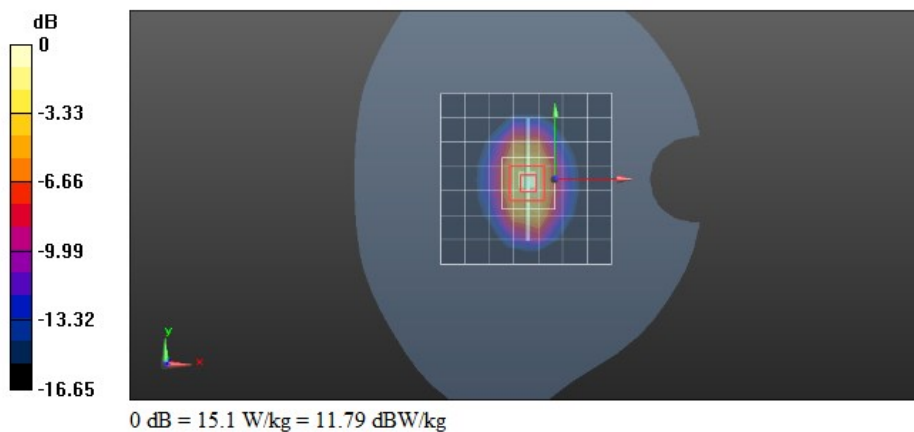
**Configuration/d=10mm, Pin=250 mW/Zoom Scan (5x5x7)/Cube 0:** Measurement grid:  $dx=8$ mm,  $dy=8$ mm,  $dz=5$ mm

Reference Value = 108.0 V/m; Power Drift = 0.12 dB

Peak SAR (extrapolated) = 18.1 W/kg

**SAR(1 g) = 9.67 W/kg; SAR(10 g) = 5.19 W/kg**

Maximum value of SAR (measured) = 15.1 W/kg



Test Laboratory: CTI SAR Lab

**Systemcheck 1750-Head****DUT: D1750V2 - SN1134; Type: D1750V2; Serial: SN1134**

Communication System: UID 0, CW (0); Communication System Band: D1750 (1750.0 MHz); Frequency: 1750 MHz; Duty Cycle: 1:1

Medium parameters used:  $f = 1750$  MHz;  $\sigma = 1.32$  S/m;  $\epsilon_r = 40.214$ ;  $\rho = 1000$  kg/m<sup>3</sup>

Phantom section: Flat Section

## DASY Configuration:

- Probe: EX3DV4 - SN7328; ConvF(8.49, 8.49, 8.49); Calibrated: 3/23/2023;
- Sensor-Surface: 1.4mm (Mechanical Surface Detection),  $z = 1.0, 31.0$
- Electronics: DAE4 Sn1458; Calibrated: 1/11/2023
- Phantom: Twin SAM V5.0; Type: QD000P40CD; Serial: 1875
- DASY52 52.8.8(1222); SEMCAD X 14.6.10(7331)

**Configuration/d=10mm, Pin=250 mW/Area Scan (8x8x1):** Measurement grid:  $dx=15$ mm,  $dy=15$ mm

Maximum value of SAR (measured) = 8.79 W/kg

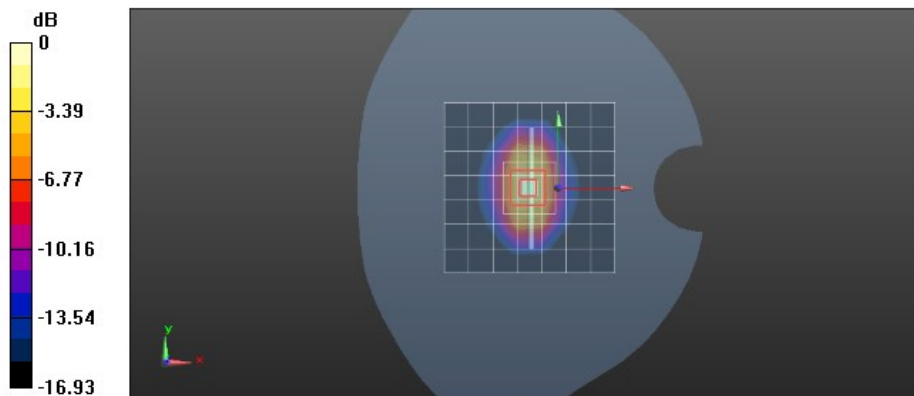
**Configuration/d=10mm, Pin=250 mW/Zoom Scan (5x5x7)/Cube 0:** Measurement grid:  $dx=8$ mm,  $dy=8$ mm,  $dz=5$ mm

Reference Value = 104.2 V/m; Power Drift = 0.34 dB

Peak SAR (extrapolated) = 16.8 W/kg

**SAR(1 g) = 8.99 W/kg; SAR(10 g) = 4.77 W/kg**

Maximum value of SAR (measured) = 14.0 W/kg



Test Laboratory: CTI SAR Lab

**Systemcheck 1750-Head****DUT: D1750V2 - SN1134; Type: D1750V2; Serial: SN1134**

Communication System: UID 0, CW (0); Communication System Band: D1750 (1750.0 MHz); Frequency: 1750 MHz; Duty Cycle: 1:1

Medium parameters used:  $f = 1750$  MHz;  $\sigma = 1.34$  S/m;  $\epsilon_r = 40.92$ ;  $\rho = 1000$  kg/m<sup>3</sup>

Phantom section: Flat Section

## DASY Configuration:

- Probe: EX3DV4 - SN7328; ConvF(8.49, 8.49, 8.49); Calibrated: 3/23/2023;
- Sensor-Surface: 1.4mm (Mechanical Surface Detection),  $z = 1.0, 31.0$
- Electronics: DAE4 Sn1458; Calibrated: 1/11/2023
- Phantom: Twin SAM V5.0; Type: QD000P40CD; Serial: 1875
- DASY52 52.8.8(1222); SEMCAD X 14.6.10(7331)

**Configuration/d=10mm, Pin=250 mW/Area Scan (8x8x1):** Measurement grid:  $dx=15$ mm,  $dy=15$ mm

Maximum value of SAR (measured) = 9.62 W/kg

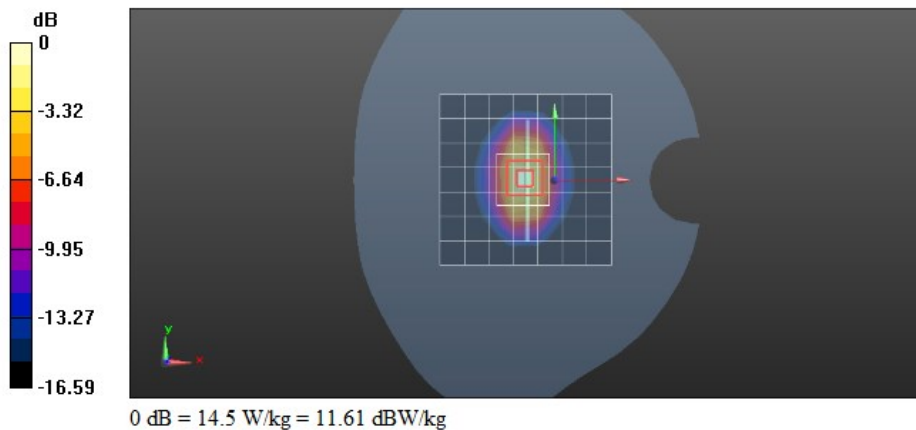
**Configuration/d=10mm, Pin=250 mW/Zoom Scan (5x5x7)/Cube 0:** Measurement grid:  $dx=8$ mm,  $dy=8$ mm,  $dz=5$ mm

Reference Value = 107.1 V/m; Power Drift = 0.16 dB

Peak SAR (extrapolated) = 17.5 W/kg

**SAR(1 g) = 9.33 W/kg; SAR(10 g) = 5 W/kg**

Maximum value of SAR (measured) = 14.5 W/kg



Test Laboratory: CTI SAR Lab

**Systemcheck 1900-Head****DUT: D1900V2 - SN5d198; Type: D1900V2; Serial: SN5d198**

Communication System: UID 0, CW (0); Communication System Band: D1900 (1900.0 MHz); Frequency: 1900 MHz; Duty Cycle: 1:1

Medium parameters used:  $f = 1900$  MHz;  $\sigma = 1.377$  S/m;  $\epsilon_r = 38.979$ ;  $\rho = 1000$  kg/m<sup>3</sup>

Phantom section: Flat Section

## DASY Configuration:

- Probe: EX3DV4 - SN7328; ConvF(8.18, 8.18, 8.18); Calibrated: 3/23/2023;
- Sensor-Surface: 2mm (Mechanical Surface Detection),  $z = 1.0, 31.0$
- Electronics: DAE4 Sn1458; Calibrated: 1/11/2023
- Phantom: Twin SAM V5.0; Type: QD000P40CD; Serial: 1875
- DASY52 52.8.8(1222); SEMCAD X 14.6.10(7331)

**Configuration/d=10mm, Pin=250 mW/Area Scan (8x8x1):** Measurement grid:  $dx=15$ mm,  $dy=15$ mm

Maximum value of SAR (measured) = 8.38 W/kg

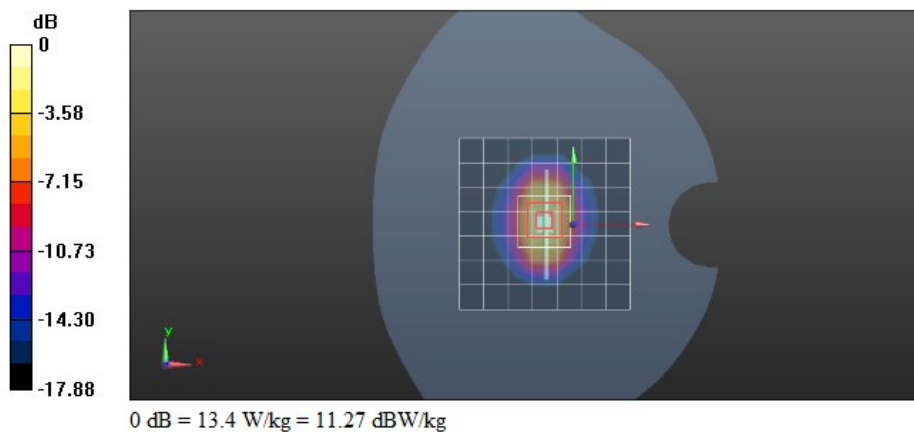
**Configuration/d=10mm, Pin=250 mW/Zoom Scan (5x5x7)/Cube 0:** Measurement grid:  $dx=8$ mm,  $dy=8$ mm,  $dz=5$ mm

Reference Value = 97.17 V/m; Power Drift = 0.22 dB

Peak SAR (extrapolated) = 16.9 W/kg

**SAR(1 g) = 9.3 W/kg; SAR(10 g) = 4.84 W/kg**

Maximum value of SAR (measured) = 13.4 W/kg



Test Laboratory: CTI SAR Lab

**Systemcheck 1900-Head****DUT: D1900V2 - SN5d198; Type: D1900V2; Serial: SN5d198**

Communication System: UID 0, CW (0); Communication System Band: D1900 (1900.0 MHz); Frequency: 1900 MHz; Duty Cycle: 1:1

Medium parameters used:  $f = 1900$  MHz;  $\sigma = 1.408$  S/m;  $\epsilon_r = 38.278$ ;  $\rho = 1000$  kg/m<sup>3</sup>

Phantom section: Flat Section

DASY Configuration:

- Probe: EX3DV4 - SN7328; ConvF(8.18, 8.18, 8.18); Calibrated: 3/23/2023;
- Sensor-Surface: 2mm (Mechanical Surface Detection),  $z = 1.0, 31.0$
- Electronics: DAE4 Sn1458; Calibrated: 1/11/2023
- Phantom: Twin SAM V5.0; Type: QD000P40CD; Serial: 1875
- DASY52 52.8.8(1222); SEMCAD X 14.6.10(7331)

**Configuration/d=10mm, Pin=250 mW/Area Scan (8x8x1):** Measurement grid:  $dx=15$ mm,  $dy=15$ mm

Maximum value of SAR (measured) = 9.04 W/kg

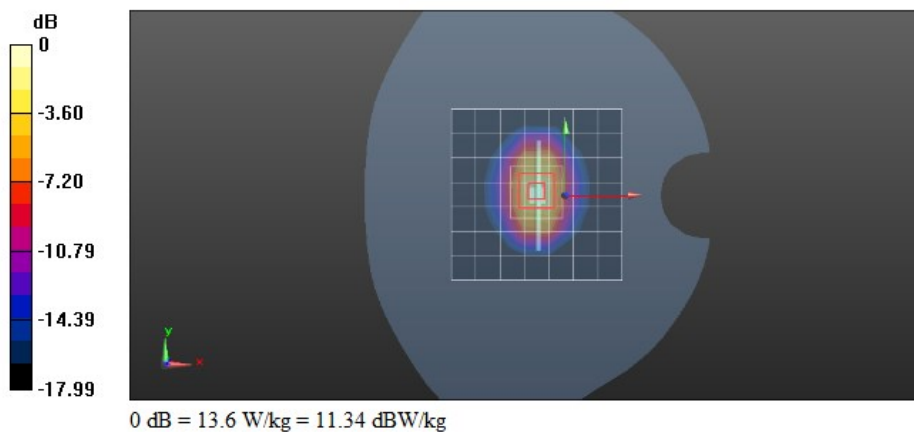
**Configuration/d=10mm, Pin=250 mW/Zoom Scan (5x5x7)/Cube 0:** Measurement grid:  $dx=8$ mm,  $dy=8$ mm,  $dz=5$ mm

Reference Value = 98.26 V/m; Power Drift = 0.12 dB

Peak SAR (extrapolated) = 17.3 W/kg

**SAR(1 g) = 9.47 W/kg; SAR(10 g) = 4.92 W/kg**

Maximum value of SAR (measured) = 13.6 W/kg





Test Laboratory: CTI SAR Lab

**Systemcheck 1900-Head****DUT: D1900V2 - SN5d198; Type: D1900V2; Serial: SN5d198**

Communication System: UID 0, CW (0); Communication System Band: D1900 (1900.0 MHz); Frequency: 1900 MHz; Duty Cycle: 1:1

Medium parameters used:  $f = 1900$  MHz;  $\sigma = 1.407$  S/m;  $\epsilon_r = 38.475$ ;  $\rho = 1000$  kg/m<sup>3</sup>

Phantom section: Flat Section

DASY Configuration:

- Probe: EX3DV4 - SN7328; ConvF(8.18, 8.18, 8.18); Calibrated: 3/23/2023;
- Sensor-Surface: 2mm (Mechanical Surface Detection),  $z = 1.0, 31.0$
- Electronics: DAE4 Sn1458; Calibrated: 1/11/2023
- Phantom: Twin SAM V5.0; Type: QD000P40CD; Serial: 1875
- DASY52 52.8.8(1222); SEMCAD X 14.6.10(7331)

**Configuration/d=10mm, Pin=250 mW/Area Scan (8x8x1):** Measurement grid:  $dx=15$ mm,  $dy=15$ mm

Maximum value of SAR (measured) = 11.1 W/kg

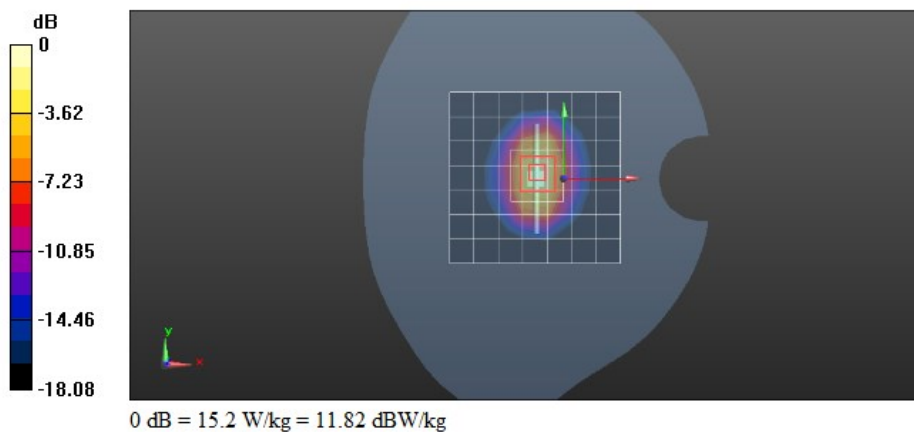
**Configuration/d=10mm, Pin=250 mW/Zoom Scan (5x5x7)/Cube 0:** Measurement grid:  $dx=8$ mm,  $dy=8$ mm,  $dz=5$ mm

Reference Value = 98.66 V/m; Power Drift = 0.55 dB

Peak SAR (extrapolated) = 19.4 W/kg

**SAR(1 g) = 10.6 W/kg; SAR(10 g) = 5.54 W/kg**

Maximum value of SAR (measured) = 15.2 W/kg



Test Laboratory: CTI SAR Lab

**Systemcheck 2450-Head****DUT: D2450V2 - SN959; Type: D2450V2; Serial: SN959**

Communication System: UID 0, CW (0); Communication System Band: D2450 (2450.0 MHz); Frequency: 2450 MHz; Duty Cycle: 1:1

Medium parameters used:  $f = 2450$  MHz;  $\sigma = 1.764$  S/m;  $\epsilon_r = 38.189$ ;  $\rho = 1000$  kg/m<sup>3</sup>

Phantom section: Flat Section

## DASY Configuration:

- Probe: EX3DV4 - SN7328; ConvF(7.63, 7.63, 7.63); Calibrated: 3/23/2023;
- Sensor-Surface: 1.4mm (Mechanical Surface Detection),  $z = 1.0, 31.0$
- Electronics: DAE4 Sn1458; Calibrated: 1/11/2023
- Phantom: Twin SAM V5.0; Type: QD000P40CD; Serial: 1875
- DASY52 52.8.8(1222); SEMCAD X 14.6.10(7331)

**Configuration/d=10mm,Pin=250mW/Area Scan (10x10x1):** Measurement grid:  $dx=12$ mm,  $dy=12$ mm

Maximum value of SAR (measured) = 17.2 W/kg

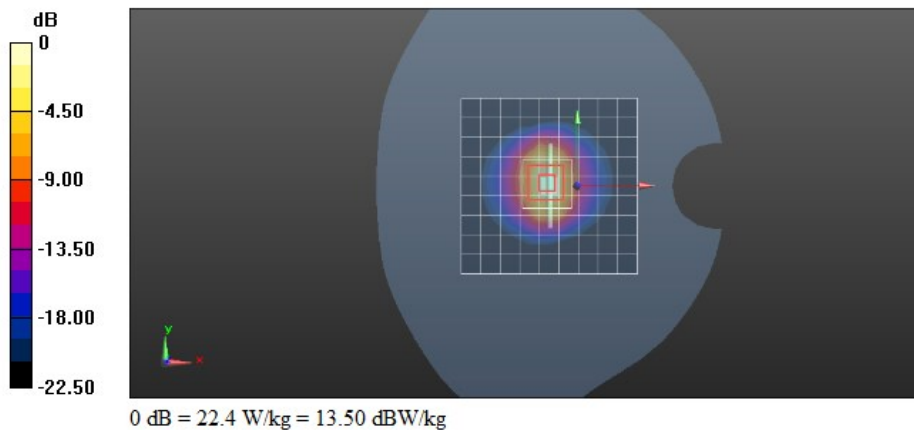
**Configuration/d=10mm,Pin=250mW/Zoom Scan (7x7x7)/Cube 0:** Measurement grid:  $dx=5$ mm,  $dy=5$ mm,  $dz=5$ mm

Reference Value = 114.0 V/m; Power Drift = 0.43 dB

Peak SAR (extrapolated) = 27.9 W/kg

**SAR(1 g) = 13.3 W/kg; SAR(10 g) = 6.15 W/kg**

Maximum value of SAR (measured) = 22.4 W/kg



Test Laboratory: CTI SAR Lab

**Systemcheck 2450-Head****DUT: D2450V2 - SN959; Type: D2450V2; Serial: SN959**

Communication System: UID 0, CW (0); Communication System Band: D2450 (2450.0 MHz); Frequency: 2450 MHz; Duty Cycle: 1:1

Medium parameters used:  $f = 2450$  MHz;  $\sigma = 1.878$  S/m;  $\epsilon_r = 37.93$ ;  $\rho = 1000$  kg/m<sup>3</sup>

Phantom section: Flat Section

## DASY Configuration:

- Probe: EX3DV4 - SN7328; ConvF(7.63, 7.63, 7.63); Calibrated: 3/23/2023;
- Sensor-Surface: 1.4mm (Mechanical Surface Detection),  $z = 1.0, 31.0$
- Electronics: DAE4 Sn1458; Calibrated: 1/11/2023
- Phantom: Twin SAM V5.0; Type: QD000P40CD; Serial: 1875
- DASY52 52.8.8(1222); SEMCAD X 14.6.10(7331)

**Configuration/d=10mm,Pin=250mW/Area Scan (10x10x1):** Measurement grid:  $dx=12$ mm,  $dy=12$ mm

Maximum value of SAR (measured) = 14.4 W/kg

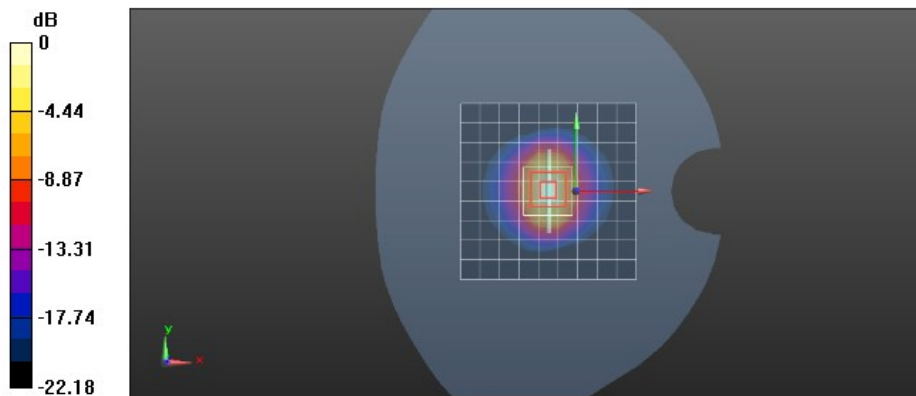
**Configuration/d=10mm,Pin=250mW/Zoom Scan (7x7x7)/Cube 0:** Measurement grid:  $dx=5$ mm,  $dy=5$ mm,  $dz=5$ mm

Reference Value = 111.0 V/m; Power Drift = 0.22 dB

Peak SAR (extrapolated) = 27.1 W/kg

**SAR(1 g) = 12.9 W/kg; SAR(10 g) = 6.01 W/kg**

Maximum value of SAR (measured) = 21.8 W/kg



0 dB = 21.8 W/kg = 13.38 dBW/kg

Test Laboratory: CTI SAR Lab

## Systemcheck 2600-Head

**DUT: D2600V2 - SN1101; Type: D2600V2; Serial: SN1101**

Communication System: UID 0, CW (0); Communication System Band: D2600 (2600.0 MHz); Frequency: 2600 MHz; Duty Cycle: 1:1

Medium parameters used:  $f = 2600$  MHz;  $\sigma = 1.999$  S/m;  $\epsilon_r = 39.996$ ;  $\rho = 1000$  kg/m<sup>3</sup>

Phantom section: Flat Section

DASY Configuration:

- Probe: EX3DV4 - SN7328; ConvF(7.4, 7.4, 7.4); Calibrated: 3/23/2023;
- Sensor-Surface: 1.4mm (Mechanical Surface Detection),  $z = 1.0, 31.0$
- Electronics: DAE4 Sn1458; Calibrated: 1/11/2023
- Phantom: Twin SAM V5.0; Type: QD000P40CD; Serial: 1875
- DASY52 52.8.8(1222); SEMCAD X 14.6.10(7331)

**Configuration/d=10mm,Pin=250mW/Area Scan (10x10x1):** Measurement grid:  $dx=12$ mm,  $dy=12$ mm

Maximum value of SAR (measured) = 17.3 W/kg

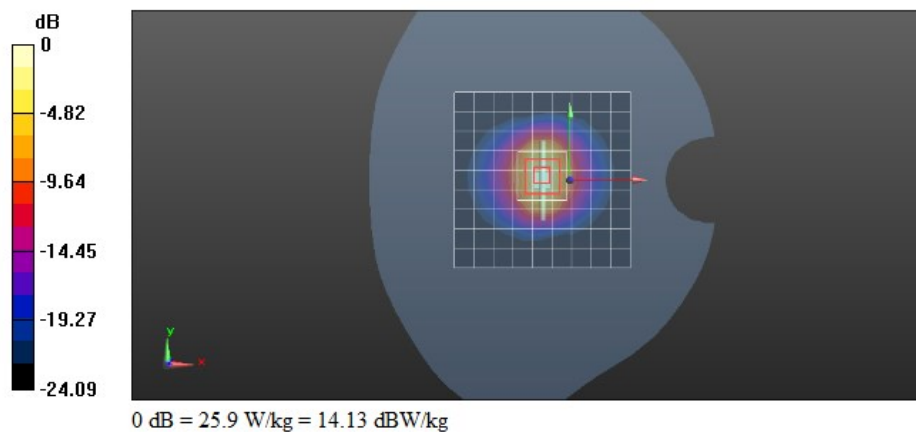
**Configuration/d=10mm,Pin=250mW/Zoom Scan (7x7x7)/Cube 0:** Measurement grid:  $dx=5$ mm,  $dy=5$ mm,  $dz=5$ mm

Reference Value = 86.34 V/m; Power Drift = 0.38 dB

Peak SAR (extrapolated) = 33.2 W/kg

**SAR(1 g) = 14.6 W/kg; SAR(10 g) = 6.46 W/kg**

Maximum value of SAR (measured) = 25.9 W/kg



Test Laboratory: CTI SAR Lab

**Systemcheck 2600-Head****DUT: D2600V2 - SN1101; Type: D2600V2; Serial: SN1101**

Communication System: UID 0, CW (0); Communication System Band: D2600 (2600.0 MHz); Frequency: 2600 MHz; Duty Cycle: 1:1

Medium parameters used:  $f = 2600$  MHz;  $\sigma = 1.995$  S/m;  $\epsilon_r = 39.62$ ;  $\rho = 1000$  kg/m<sup>3</sup>

Phantom section: Flat Section

## DASY Configuration:

- Probe: EX3DV4 - SN7328; ConvF(7.4, 7.4, 7.4); Calibrated: 3/23/2023;
- Sensor-Surface: 1.4mm (Mechanical Surface Detection),  $z = 1.0, 31.0$
- Electronics: DAE4 Sn1458; Calibrated: 1/11/2023
- Phantom: Twin SAM V5.0; Type: QD000P40CD; Serial: 1875
- DASY52 52.8.8(1222); SEMCAD X 14.6.10(7331)

**Configuration/d=10mm,Pin=250mW/Area Scan (10x10x1):** Measurement grid:  $dx=12$ mm,  $dy=12$ mm

Maximum value of SAR (measured) = 17.5 W/kg

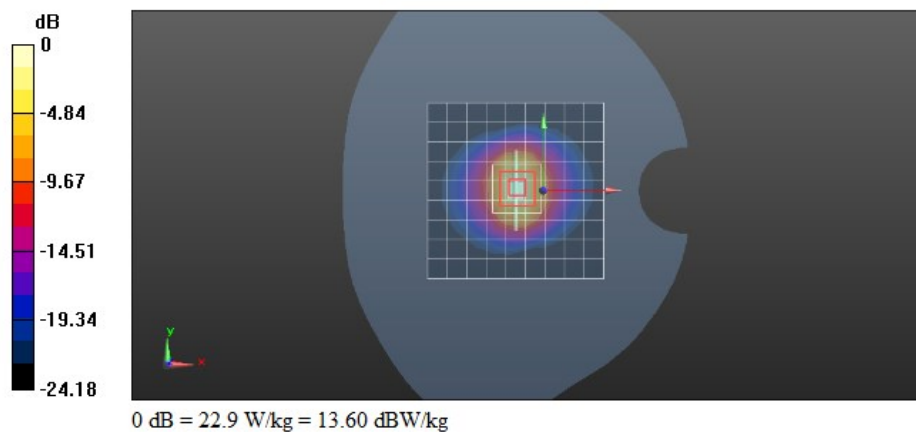
**Configuration/d=10mm,Pin=250mW/Zoom Scan (7x7x7)/Cube 0:** Measurement grid:  $dx=5$ mm,  $dy=5$ mm,  $dz=5$ mm

Reference Value = 83.59 V/m; Power Drift = 0.05 dB

Peak SAR (extrapolated) = 29.3 W/kg

**SAR(1 g) = 13.1 W/kg; SAR(10 g) = 5.78 W/kg**

Maximum value of SAR (measured) = 22.9 W/kg





Test Laboratory: CTI SAR Lab

**Systemcheck 2600-Head****DUT: D2600V2 - SN1101; Type: D2600V2; Serial: SN1101**

Communication System: UID 0, CW (0); Communication System Band: D2600 (2600.0 MHz); Frequency: 2600 MHz; Duty Cycle: 1:1

Medium parameters used:  $f = 2600$  MHz;  $\sigma = 1.995$  S/m;  $\epsilon_r = 39.62$ ;  $\rho = 1000$  kg/m<sup>3</sup>

Phantom section: Flat Section

## DASY Configuration:

- Probe: EX3DV4 - SN7328; ConvF(7.4, 7.4, 7.4); Calibrated: 3/23/2023;
- Sensor-Surface: 1.4mm (Mechanical Surface Detection),  $z = 1.0, 31.0$
- Electronics: DAE4 Sn1458; Calibrated: 1/11/2023
- Phantom: Twin SAM V5.0; Type: QD000P40CD; Serial: 1875
- DASY52 52.8.8(1222); SEMCAD X 14.6.10(7331)

**Configuration/d=10mm,Pin=250mW/Area Scan (10x10x1):** Measurement grid:  $dx=12$ mm,  $dy=12$ mm

Maximum value of SAR (measured) = 16.8 W/kg

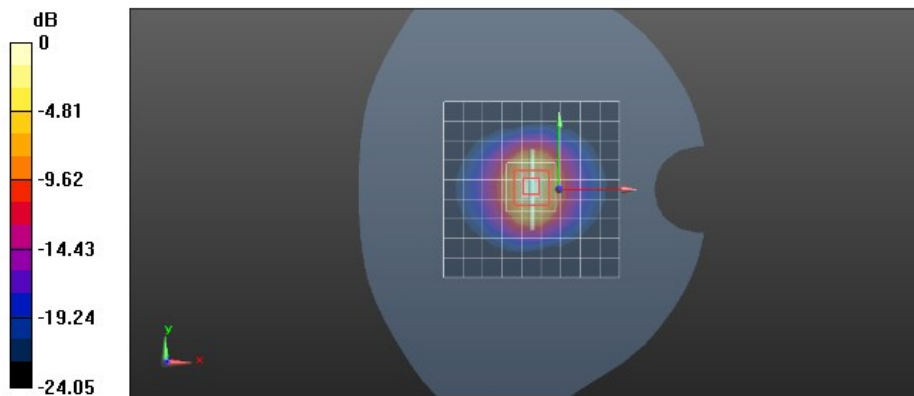
**Configuration/d=10mm,Pin=250mW/Zoom Scan (7x7x7)/Cube 0:** Measurement grid:  $dx=5$ mm,  $dy=5$ mm,  $dz=5$ mm

Reference Value = 87.85 V/m; Power Drift = 0.02 dB

Peak SAR (extrapolated) = 31.0 W/kg

**SAR(1 g) = 13.7 W/kg; SAR(10 g) = 6.08 W/kg**

Maximum value of SAR (measured) = 24.3 W/kg



0 dB = 24.3 W/kg = 13.86 dBW/kg