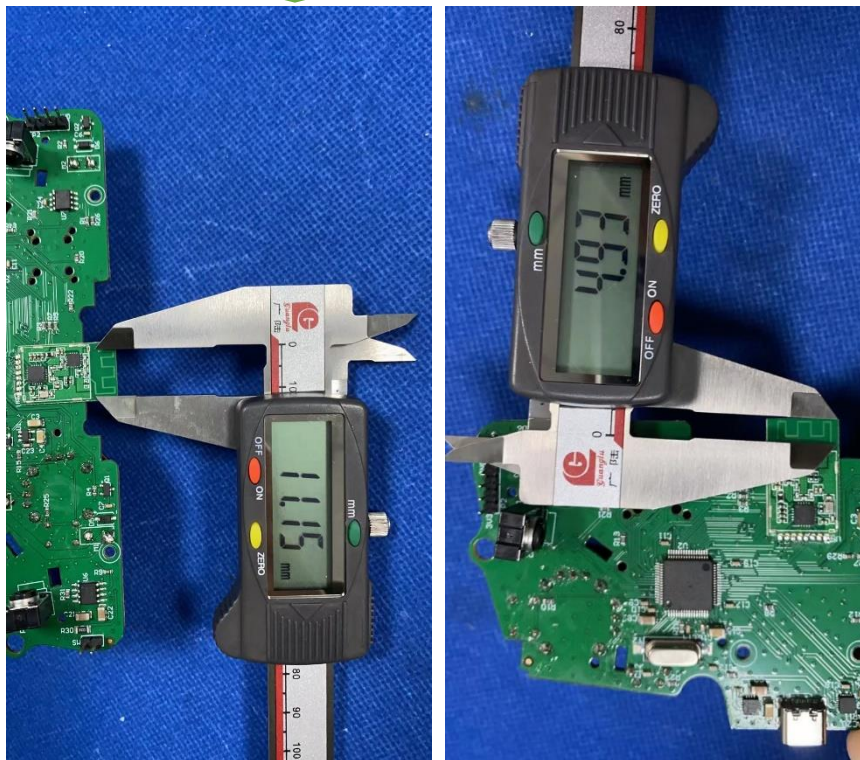


## 1. Antenna Description:

Antenna type	PCB Antenna
Model	SP990
Frequency range	2403-2480MHz
Manufacturer	Rinfire, Inc.
Gain	1.50 dBi

## 2. Antenna Photo:

Length:11.15mm  
diameter:4.93mm



ditions

### 3.1 Test instrument

VSWR is tested using Agilent E5071B connected to

a hand mechanism, and the status is free space.

### 3.2 Test environment and methods

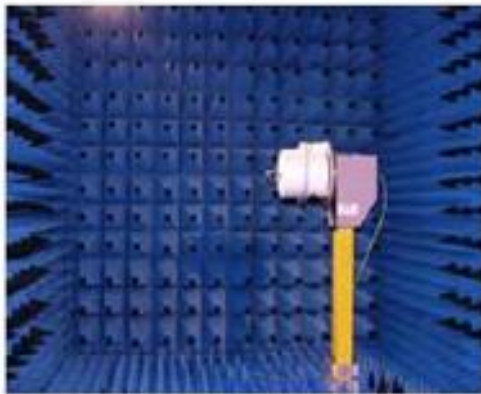
Dark room specifications: ETS-743

TD-SCDMA test equipment: StarPoint SP6010/Agilent 8960

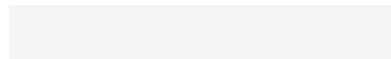
LTE-TDD/FDD-SCDMA test equipment: StarPoint SP8011/CMW500

WCDMA/GSM/CDMA test equipment: Agilent 8960

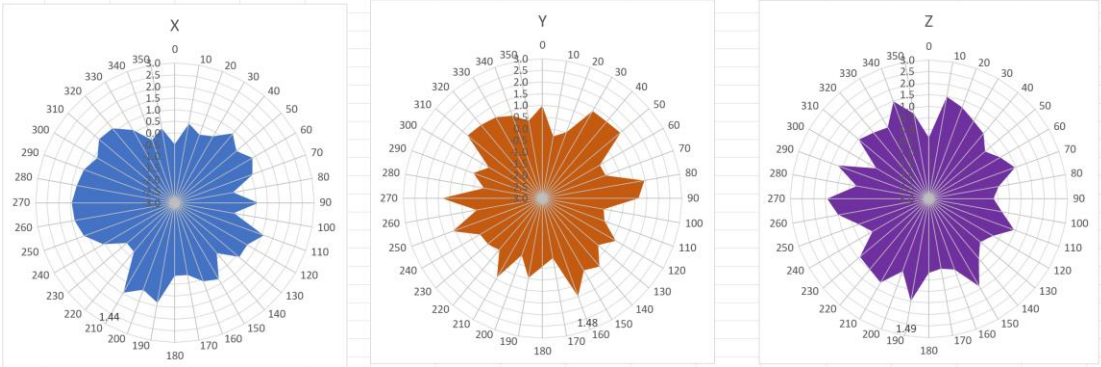
Passive efficiency testing equipment: Agilent Technologies E5071B



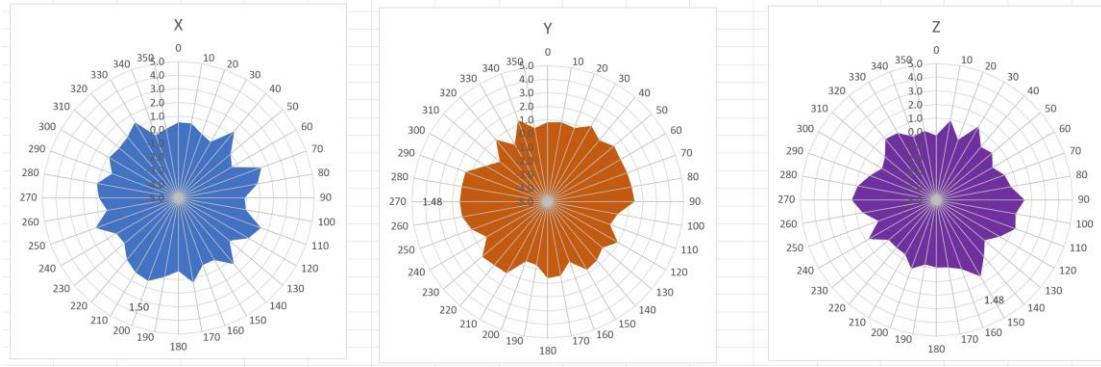
## 4 . Antenna Radiation Pattern



2400MHz



2450MHz



2500MHz

