

Smart lock

function and operation

Warranty card

| | |
|---------------------|--|
| Product model | |
| Telephone | |
| products series | |
| E-mail | |
| Purchase location | |
| Contact information | |
| Purchase date | |

Product warranty regulations

Product model _____

Inspectors _____

Date of production _____

The products meet the specified standards after inspection and are allowed to leave the factory

1.This product can enjoy free warranty and maintenance within one year from the date of purchase. If you have a fault during normal use, please contact our company or dealer and show this form during warranty.

2.The machine failure caused by the following reasons is not covered by the free warranty:

A.Component damage caused by human factors (visible physical injury, etc.)

B.Component damage and failure caused by customer transportation

C.Products that alter warranty certificates, serial numbers and labels without authorization

D.Force Majeure: such as earthquake, lightning, fire, etc., accidents caused by natural disasters (theft, loss, etc.)

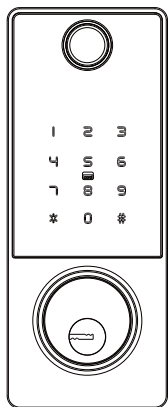
E.Products without valid warranty certificate

F.Failure caused by foreign matters entering the equipment

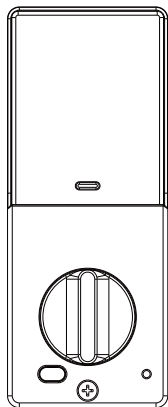
G.Faults caused by self disassembly and repair

3.It is not responsible for the failure of other equipment directly or indirectly caused by product failure

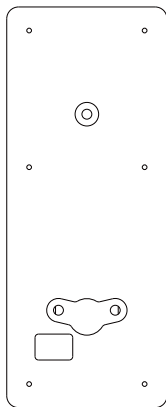
Included in the box



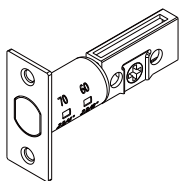
Keypad



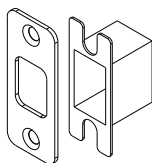
Interior Assembly



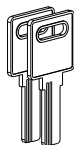
Mounting plate



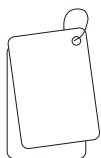
Deadbolt



Strike Plate



Back up Keys



Cards



Connecting Solenoid D



Screw A
(20mm)



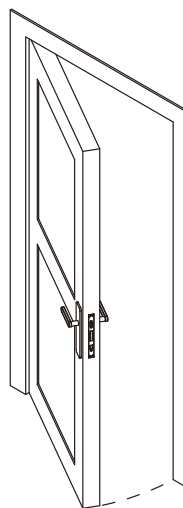
Screw B
(8mm)



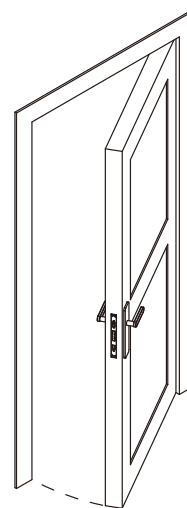
Screw C
(25mm)

Be aware of the door's operating direction

Left



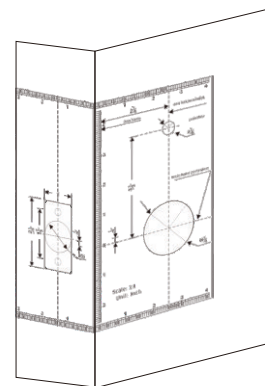
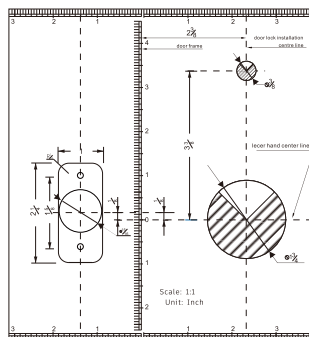
Right



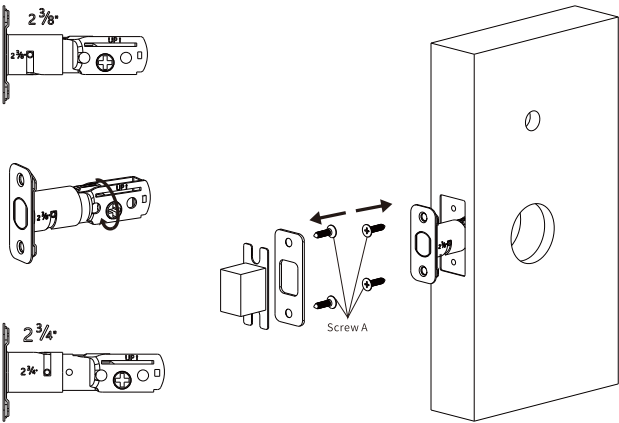
Disassemble your existing deadbolt from the door

Step 1 Preparation

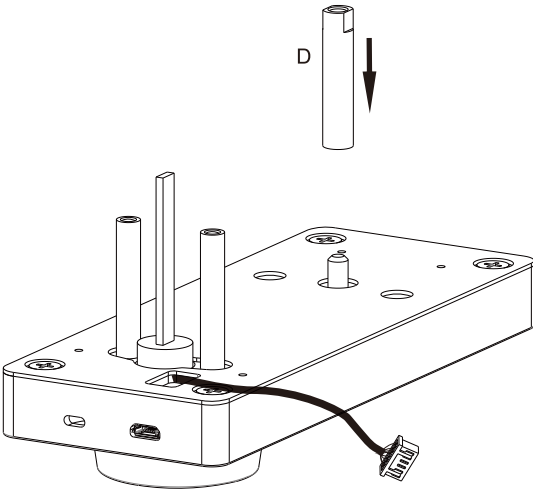
Check the door's dimensions



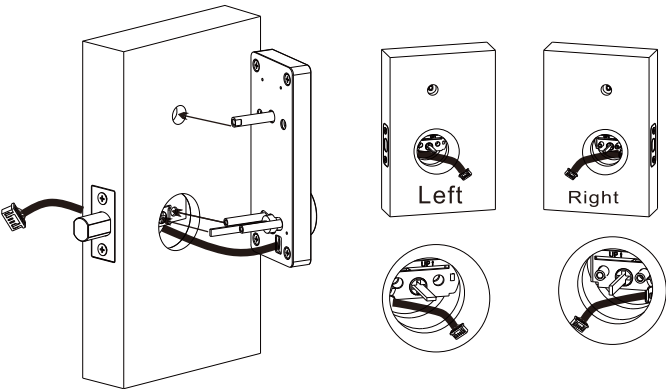
Step 2 Installing Deadbolt and Strike plate



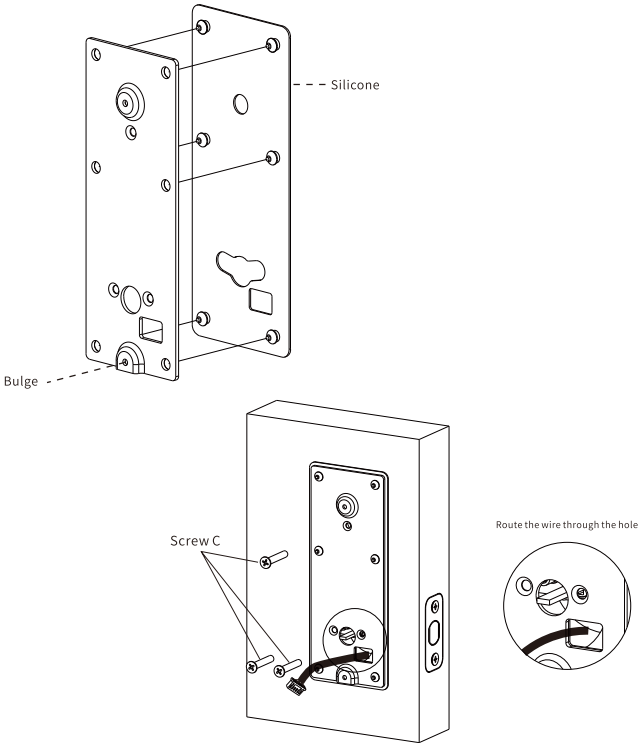
Step 3 Installing Deadbolt and Strike plate



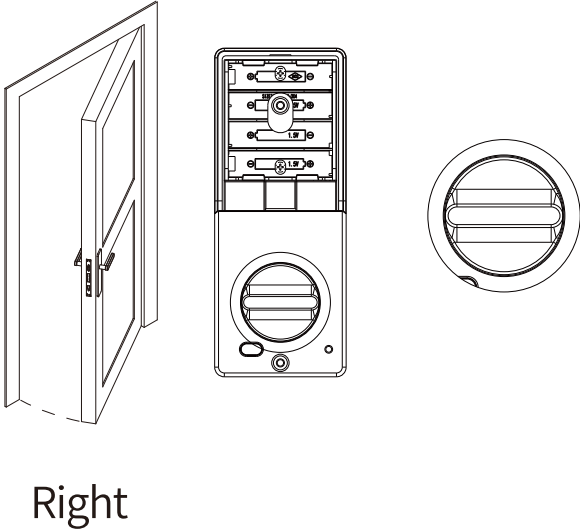
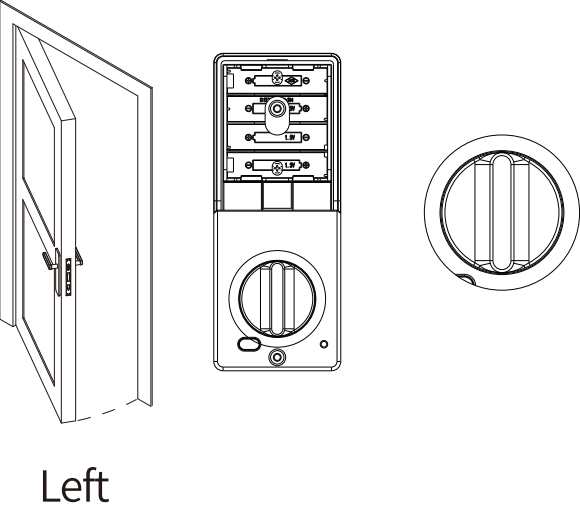
Step 4 Installing Keypad



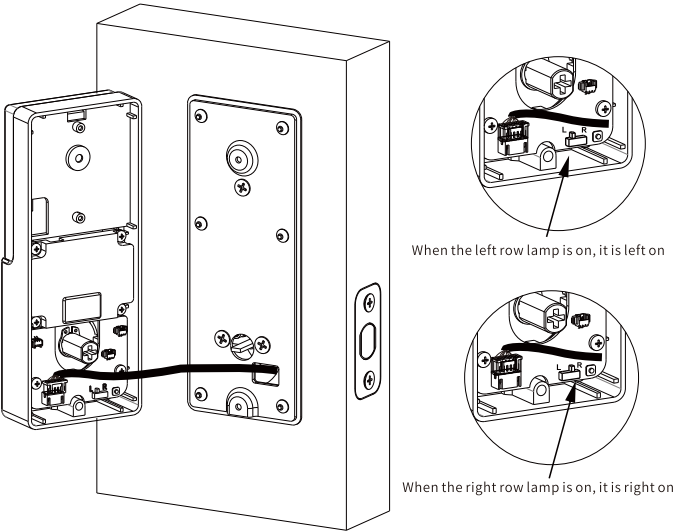
Step 5 Installing Mounting Plate



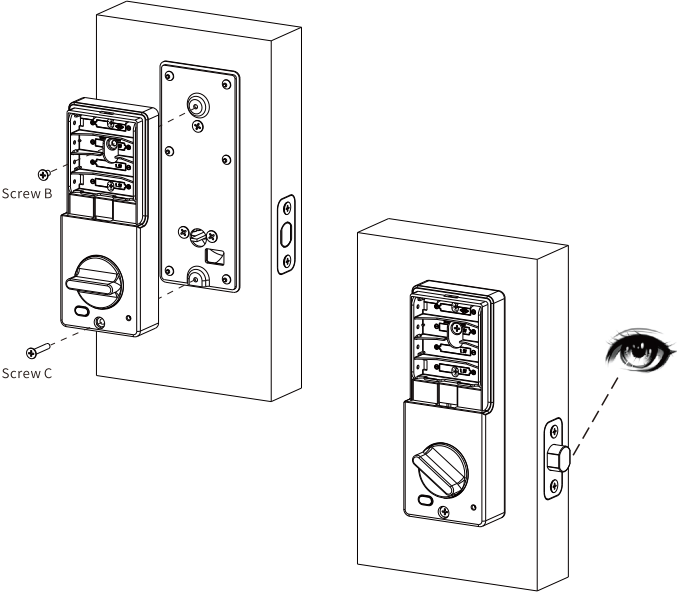
Step 6 Preparing interior Assembly



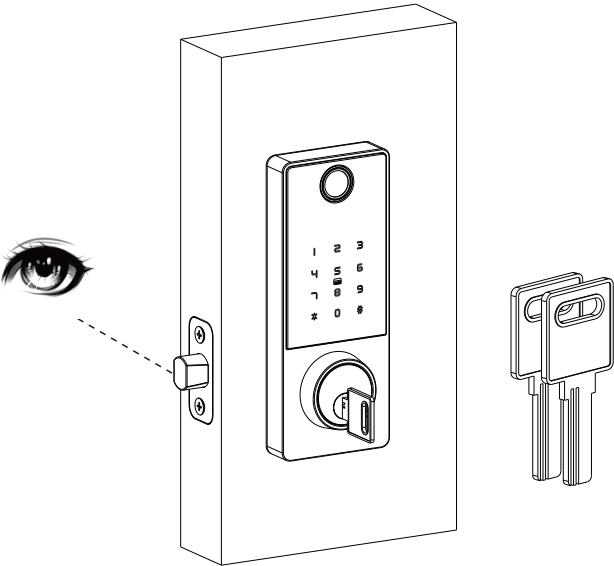
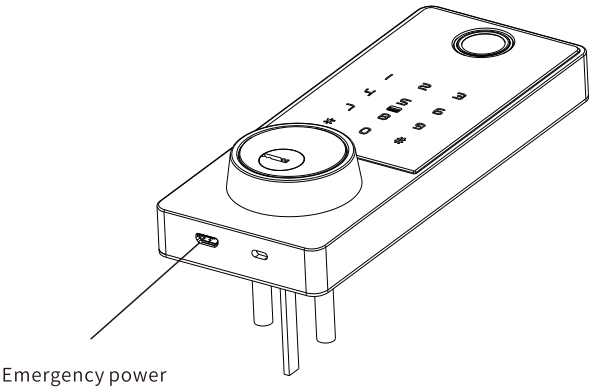
Step 7 Connect the Cable



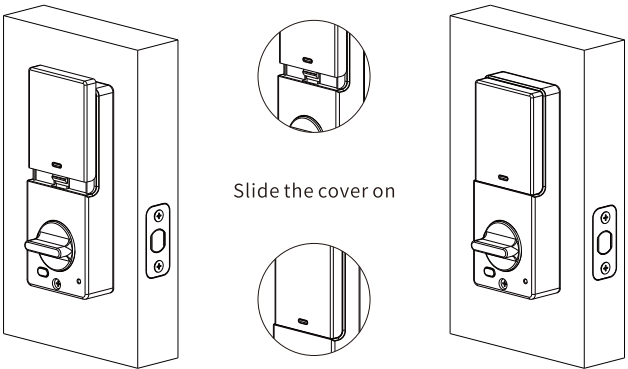
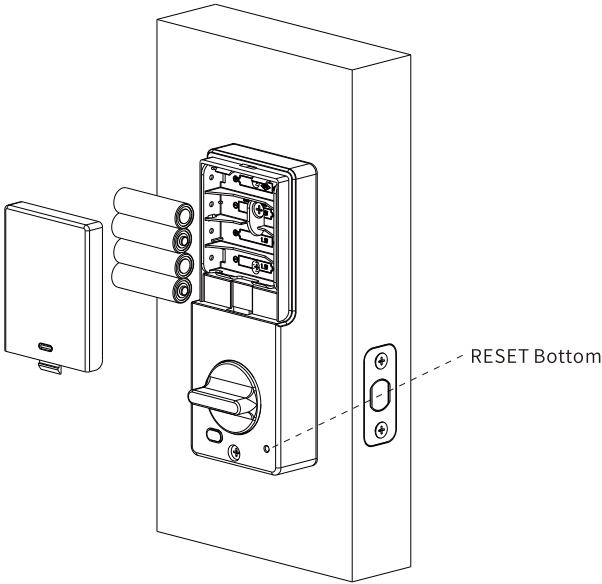
Step 8 Installing Interior Assembly and Testing



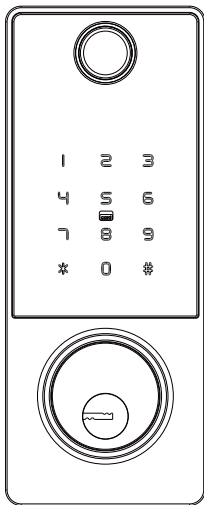
Step 9 Back Up Key Testing



Step 10 Installing Batteries & Cover



Step 11 Operation Testing



Now please use the TT lock instruction to set up your SMART LOCK!

Operation Manual (App operation not included)

Two ways are available for deleting Bluetooth Administrator/resetting to default mode

- A.If the lock already has a Bluetooth Administrator, the administrator can delete the lock on the App when he is near the lock.
- B.Long press Reset Button on the lock for 3 seconds till two short beeps are heard.

2.Add Bluetooth Administrator

To add a Bluetooth Administrator to a lock that is in default mode, touch the keypad to activate the lock. When the backlights are on, add administrator on the App.

3.Unlock with passcode

Input passcode and press“#” . A long beep indicates unlocking successful.Four short beeps mean unlocking unsuccessful,please check whether the passcode is correct.
Before a Bluetooth Administrator is added to a lock, the default passcode is 123456.

Notice: While inputting a passcode, before “#” is pressed, pressing “*” will delete the previous digit.

4.Two ways to unlock with App

- A.When [Touch to Unlock] feature is on and user's app is activated, user can unlock by touching and lightening up the keypad of the lock.
- B.Press the Unlock/Lock icon on the App.

Notice: A long beep indicates unlocking successful.

5.Lock

- A.Long press “#” on the keypad of the lock til two short beeps are heard.
- B.Long press the Unlock/Lock icon on the App.
- C.When Auto Lock feature is on, the lock locks automatically in pre- set time. Notice: The default mode of Auto Lock is off.
- D. *If the lock comes with a magnetic sensor, it locks automatically when the sensor detects the door is closed.
Notice:The default mode of this feature on.

Notice: In case of failure of locking, the lock sounds alarm for 5 times.

6.Edit user passcode

Input [* 10#original passcode#new passcode#new passcode#] on the keypad to edit passcodes.
A long beep indicates editing successful and 4 short beeps mean editing unsuccessful.

7.3 ways to set Auto Lock

A.Input [*21#Admin Passcode#Auto Lock time out(0, 5~999 seconds)#] to set Auto Lock.
If “0” is set as the time out,Auto Lock is disabled. Other numbers mean the time the lock will automatically lock alter it is unlocked. The default mode of Auto Lock is off.
B.For locks equipped with magnetic sensors, the default mode of Auto Lock is on. Inputing [*23#Admin Passcode#0#] will disable Auto Lckd feature. Inputing [*23#Admin Passcode#1#] will activate Auto Lock feature again.
C.On the App, select the lock, press [Settings] [Auto Lock] to edit the settings of Auto Lock.

8.Low battery alert


If the battery is low, the keypad will light up and flash for a second then it's activated.

9.Keypad lock

The keypad will be disabled for 5 minutes after 5 consecutive trias of wrong passcode. During the lockout period, the light will flach quickly after each pressing. Unlocking with App is still functional in this case, and the keypad will be back to normal once the lock is unlocked successfully with an App.
The keypad will be reactivated after 5 minutes' lockout period, and user can continue to input passcde.
However, each wrong passcode trial will result in 5 minutes' lockout.

To manage the lock without App

10.Edit default Admin Passcode (Before an administrator is added to the lock, default Admin Passcode is 123456)
Input [*12#default Admin Passcode #new Passcode#new Passcode#] to edit Admin Passcode. A long beep indicates editing successful and 4 short beeps mean editing unsuccessful.

 **Notice:** Default Admin Passcode must be edited before it can be used to add or delete other Passcodes.

11.Add Uunlocking passcode


Input [*85#Admin Passcode#new Passcode#naw Passcode#] to add a new unlocking passcode. A long beep indicates adding successful and 4 short bees mean adding unsuccessful.

12.Delete all unlocking passcodes

Input [*71#Admin Passcode#] to delete all User Passcodes [including passcodes generated by App].
A long beep indicates deleting successful and 4 short beeps mean the Admin Passcode is wrong and deleting unsuccessful

13.Add Bluetooth Administrator

Input [*83#Admin Pascode#] to add Bluetooth Administrator.
A Long beep indicates the lock is ready for App to add a Bluetooth Administrator.

 **Notice:** Once . Bluetooth Administrator is added, all previous passcodos added on the lock are invalidated Administrator can now add passcodes on App.

3. Technical parameter

| Technical parameter | | | |
|---------------------|-------------------------------|-------------------------------------------|--------|
| No | Item | Parameter | Remark |
| 1 | Quiescent current | ≤50uA | |
| 2 | Dynamic current | ≤180mA | |
| 3 | Number of administrators | 9 | |
| 4 | Number of fingerprints | 110 | |
| 5 | Total user capacity | 300 | |
| 6 | Fingerprint collector | Semiconductors | |
| 7 | Fingerprint comparison time | ≤1 Sec | |
| 8 | Fingerprint recognition angle | 360 degrees | |
| 9 | Rejection rate | ≤0.1% | |
| 10 | False recognition rate | ≤0.0001% | |
| 11 | Recognition time | ≤0.5 Sec | |
| 12 | Power Type | 6V | |
| 13 | Emergency power supply | 5VDC | |
| 14 | Operating temperature | -25°C~60°C | |
| 15 | Operating relative humidity | 20%-90%RH | |
| 16 | real voice | Yes | |
| 17 | Keyboard | KeyboardTouch standard 12-bit keyboard | |
| 18 | Password length | 6-8 digits | |
| 19 | Anti-peeping password | 20 digits max | |
| 20 | Low voltage alarm | 4.8±0.2V | |
| 21 | unlock time | ≤1 Sec | |

FCC Compliance Statement:

This device complies with Part 15 of the FCC Rules.

Operation is subject to the following two conditions:

- (1) this device may not cause harmful interference, and
- (2) this device must accept any interference received, including interference that may cause undesired operation.

Changes or modifications not expressly approved by the party responsible for compliance could void the user's authority to operate the equipment.

NOTE: This equipment has been tested and found to comply with the limits for a Class B digital device, pursuant to Part 15 of the FCC Rules. These limits are designed to provide reasonable protection against harmful interference in a residential installation. This equipment generates, uses instructions, may cause harmful interference to radio communications. However, there is no guarantee that interference will not occur in a particular installation. If this equipment does cause harmful interference to radio or television reception, which can be determined by turning the equipment off and on, the user is encouraged to try to correct the interference by one or more of the following measures:

- Reorient or relocate the receiving antenna.
- Increase the separation between the equipment and receiver.
- Connect the equipment into an outlet on a circuit different from that to which the receiver is connected.
- Consult the dealer or an experienced radio/TV technician for help.

FCC Radiation Exposure Statement

This equipment must be installed and operated in accordance with provided instructions and the antenna(s) used for this transmitter must be installed to provide a separation distance of at least 20 cm from all persons and must not be co-located or operating in conjunction with any other antenna or transmitter.

End-users and installers must be provide with antenna installation instructions and transmitter operating conditions for satisfying RF exposure