

75.00 mm

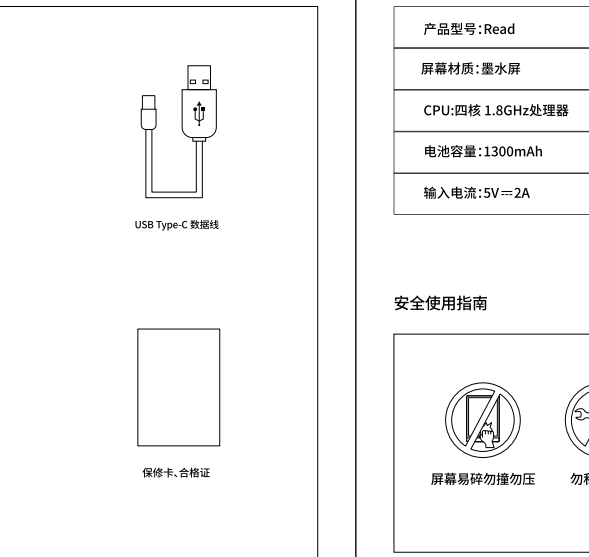
105.00 mm

Bigme
— JUST FOR YOU —

©深圳市大我云读写科技有限公司
Bigme Cloud Literacy Technology Co., Ltd.

简体中文

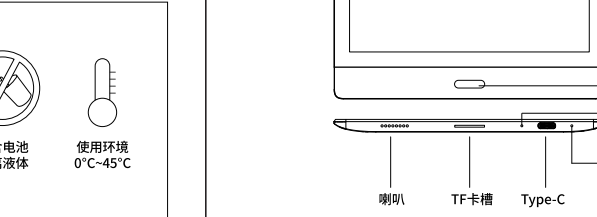
产品配件



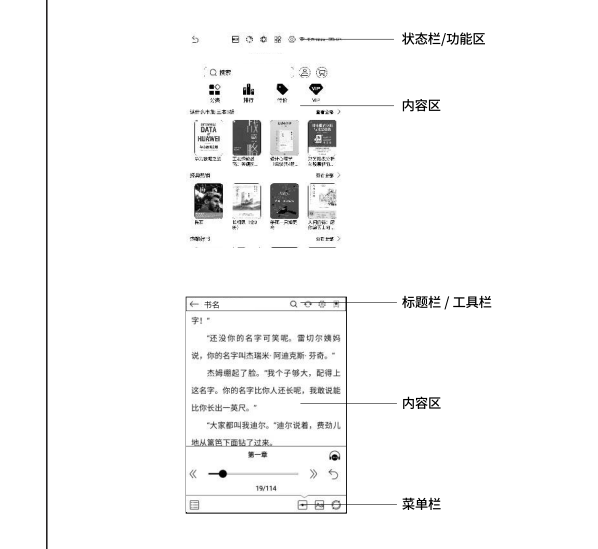
基本信息

产品型号: Read	显示尺寸: 6"
屏幕材质: 墨水屏	主机尺寸: 109.5"154.9"7.8mm
CPU: 四核 1.8GHz处理器	运行/存储: 2GB+32GB
电池容量: 1300mAh	前光: 内置36级阅光灯
输入电流: 5V=2A	接口类型: USB Type-C

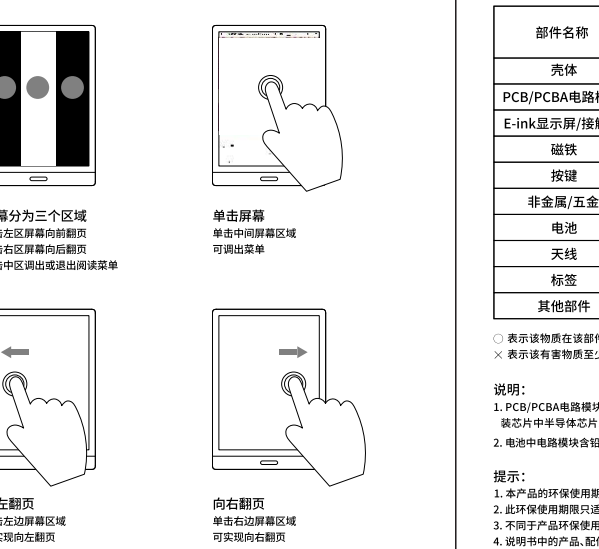
安全使用指南



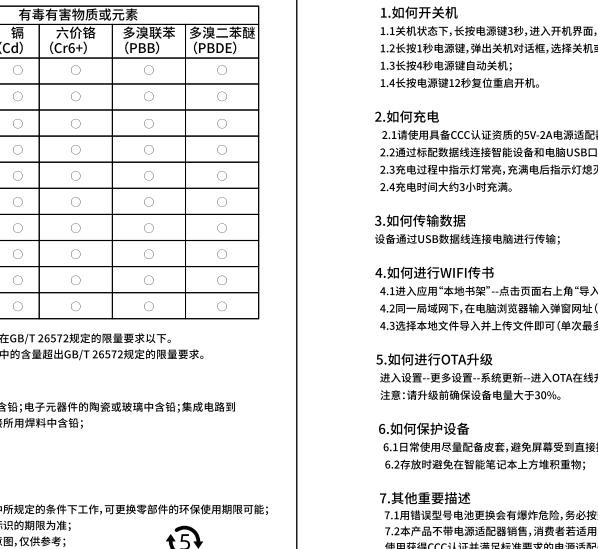
产品介绍



界面功能说明



触控操作说明



有害物质信息及环保使用期限说明

部件名称	铅 (Pb)	汞 (Hg)	镉 (Cd)	六价铬 (Cr6+)	多溴联苯 (PBB)	多溴二苯醚 (PBDE)
壳体	○	○	○	○	○	○
PCB/PCBA电路模块	×	○	○	○	○	○
E-ink显示屏/接触屏	○	○	○	○	○	○
磁铁	○	○	○	○	○	○
按键	○	○	○	○	○	○
非金属/五金	○	○	○	○	○	○
电池	×	○	○	○	○	○
天线	○	○	○	○	○	○
标签	○	○	○	○	○	○
其他部件	○	○	○	○	○	○

○ 表示该物质在该部件所有均质材料中的含量均符合GB/T 26572规定的限量要求以下。
× 表示该有害物质至少在该部件的某一均质材料中的含量超出GB/T 26572规定的限量要求。

说明:
1. PCB/PCBA电路模块器件均含合金或高导热材料中含铅;电子元器件的陶瓷或玻璃中含铅;集成电路到封装芯片中半导体芯片及载体之间形成可靠性连接所用焊料中含铅;
2. 电池中电路模块含铅。

提示:
1. 本产品的环保使用期限5年, 标识如下图所示;
2. 此环保使用期限只适用于产品是在产品说明书中所规定的条件下工作, 可更换零部件的环保使用期限可能;
3. 不同于产品环保使用期限, 若有, 请以零部件上标识的期限为准;
4. 说明书中的产品、配件、用户界面等插图均为示意图, 仅供参考;
5. 由于产品的更新与升级, 产品实物与示意图可能略有差异, 请以实物为准。

使用技巧

1. 如何开机
1.1 关机状态下, 长按电源键3秒, 进入开机界面, 进度条完毕即进入操作主界面;
1.2 长按1秒电源键, 弹出关机对话框, 选择关机或者重启;
1.3 长按4秒电源键自动关机;
1.4 长按电源键12秒复位重启开机。

2. 如何充电
2.1 请使用具备CCC认证资质的5V-2A电源适配器连接交流插座通过数据线连接进行充电;
2.2 通过标配数据线连接智能设备和电脑USB口进行充电;
2.3 充电过程中指示灯常亮, 充满后指示灯熄灭;
2.4 充电时间大约3小时充满。

3. 如何传输数据
设备通过USB数据线连接电脑进行传输;

4. 如何进行WiFi传书
4.1 进入应用“本地书架”-点击页面右上角“导入”-选择WiFi导入;
4.2 同一局域网下, 在电脑浏览器输入网页网址 (请选择英文输入法);
4.3 选择本地文件导入并上传文件即可 (单次最多可上传10份文件)。

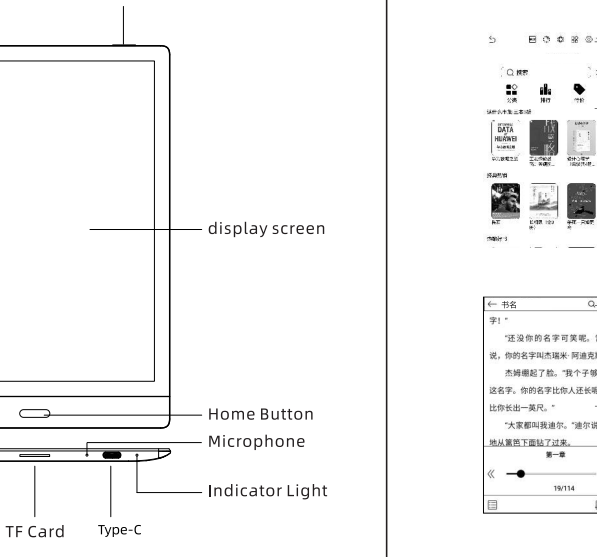
5. 如何进行OTA升级
进入设置-更多设置-系统更新-进入OTA在线升级;
注意: 请升级前确保设备电量大于30%。

6. 如何保护设备
6.1 日常使用尽量配备皮套, 避免屏幕受到直接撞击、挤压, 远离各种液体。
6.2 存放时避免在智能笔记本上方堆积重物;

7. 其他重要描述
7.1 原装型号号电池更换会有操作危险, 务必按照说明使用原装的电池;
7.2 本产品不带电源适配器, 消费者若需电源适配器供电, 则应购买配套使用获得CCC认证并满足标准要求的产品电源适配器。

English

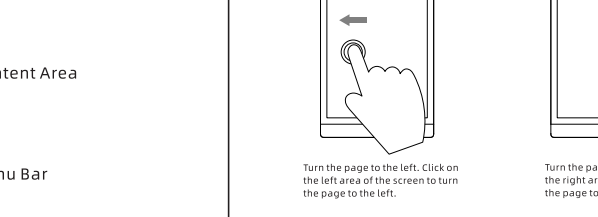
Product Accessories



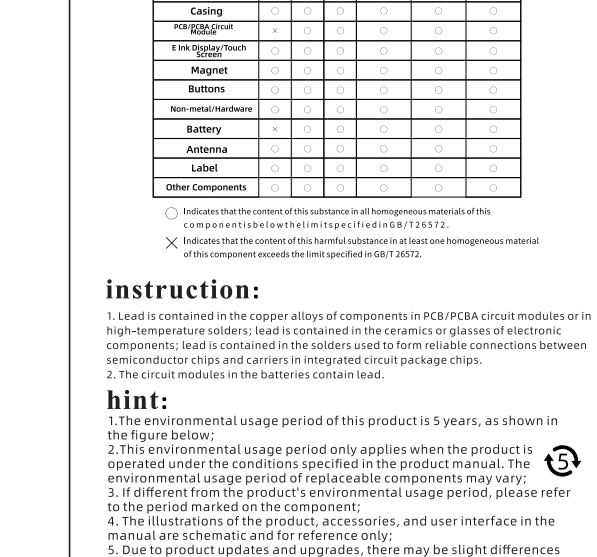
Basic Information

Model: Read	Display Size: 6 inches
Screen Material: E Ink Electronic Paper Display	Device Dimensions: 109.5 x 154.9 x 7.8 mm
CPU: Quad-core 1.8GHz Processor	RAM/Storage: 2GB + 32GB
Battery Capacity: 1300mAh	Front Light: Built-in 36-level Reading Light
Input current: 5V=2A	Interface Type: USB Type-C

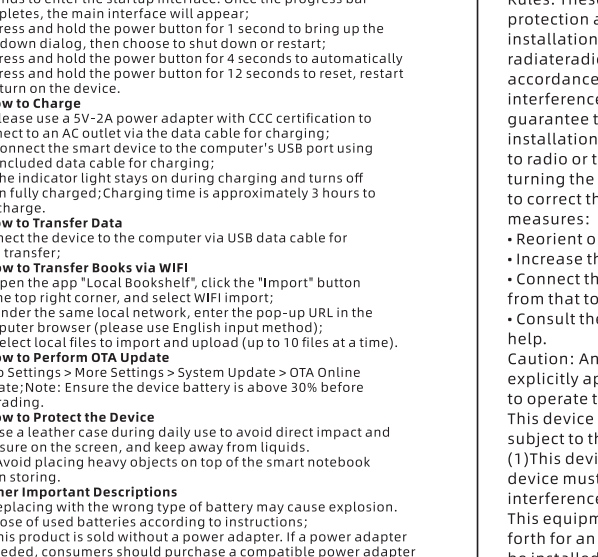
Safety Usage Guide



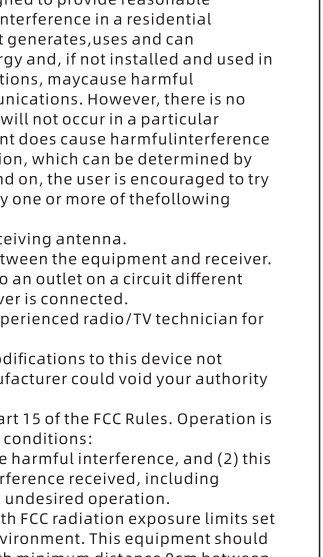
Product Introduction



Interface Function Description



Touch Operation Instructions



Toxic and Harmful Substances or Elements

Component Name	Lead (Pb)	Mercury (Hg)	Cadmium (Cd)	Hexavalent Chromium (Cr6+)	Polybrominated Biphenyls (PBB)	Polybrominated Diphenyl Ethers (PBDE)
Casing	○	○	○	○	○	○
PCB/PCBA Circuit Module	×	○	○	○	○	○
E-ink Display/Touch Screen	○	○	○	○	○	○
Magnet	○	○	○	○	○	○
Buttons	○	○	○	○	○	○
Non-metal/Hardware	○	○	○	○	○	○
Battery	×	○	○	○	○	○
Antenna	○	○	○	○	○	○
Label	○	○	○	○	○	○
Other Components	○	○	○	○	○	○

○ Indicates that the content of this substance in all homogeneous materials of this component is below the limit specified in GB/T 26572.
× Indicates that the content of this harmful substance in at least one homogeneous material of this component exceeds the limit specified in GB/T 26572.

instruction:

1. Lead is contained in the copper alloys of components in PCB/PCBA circuit modules or in high-temperature solders; lead is contained in the ceramics or glasses of electronic components; lead is contained in the solders used to form reliable connections between semiconductor chips and carriers in integrated circuit package chips.
2. The circuit modules in the batteries contain lead.

5. How to Perform OTA Update
Go to Settings > More Settings > System Update > OTA Online Update; Note: Ensure the device battery is above 30% before upgrading.

6. How to Protect the Device
6.1 Use a leather case during daily use to avoid direct impact and pressure on the screen, and keep away from liquids.
6.2 Avoid placing heavy objects on top of the smart notebook when storing.

7. Other Important Descriptions
7.1 Replacing with the wrong type of battery may cause explosion.
7.2 Dispose of used batteries according to instructions;
7.3 This product is sold without a power adapter. If a power adapter is needed, consumers should purchase a compatible power adapter with certification that meets standard requirements.

Usage Tips

1. How to Power On/Off
1.1 When powered off, press and hold the power button for 3 seconds to enter the start-up interface. Once the progress bar completes, the main interface will appear;
1.2 Press and hold the power button for 1 second to bring up the shutdown dialog, then choose to shut down or restart;
1.3 Press and hold the power button for 4 seconds to automatically restart;
1.4 Press and hold the power button for 12 seconds to reset, restart and turn on the device.

2. How to Charge
2.1 Please use a 5V-2A power adapter with CCC certification to connect to an AC outlet via the data cable for charging;
2.2 Connect the smart device to the computer's USB port using the included data cable for charging;
2.3 The indicator light stays on during charging and turns off when fully charged; Charging time is approximately 3 hours to full charge.

3. How to Transfer Data
Connect the device to the computer via USB data cable for data transfer;

4. How to Transfer Books via WIFI
4.1 Open the app "Local Bookshelf", click the "Import" button on the top right corner, and select WIFI import;
4.2 Under the same local network, enter the pop-up URL in the computer browser (please use English input method);
4.3 Select local files to import and upload (up to 10 files at a time).

FCC Warning:

This equipment has been tested and found to comply with the limits for a Class B digital device, pursuant to part 15 of the FCC Rules. These limits are designed to provide reasonable protection against harmful interference in a residential installation. If this equipment does cause harmful interference to radio or television reception, which can be determined by turning the equipment off and on, the user is encouraged to try to correct the interference by one or more of the following measures:

- Reorient or relocate the receiving antenna.
- Increase the separation between the equipment and receiver.
- Connect the equipment into an outlet on a circuit different from that to which the receiver is connected.
- Consult the dealer or an experienced radio/TV technician for help.

Caution: Any changes or modifications to this device not explicitly approved by manufacturer could void your authority to operate this equipment.

This device complies with part 15 of the FCC Rules. Operation is subject to the following two conditions:

- (1) This device may not cause harmful interference, and (2) this device must accept any interference received, including interference that may cause undesired operation.

This equipment complies with FCC radiation exposure limits set forth for an uncontrolled environment. This equipment should be installed and operated with minimum distance 0cm between the radiator and your body.