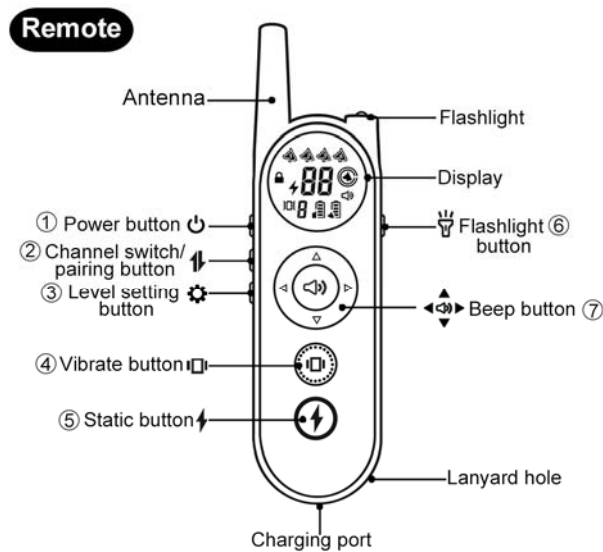


User Manual

Model:X1/X2/X3



1、 Power button (🔌) .Long press the button for 2 secs to turn on/off. Short press to lock the button, and then short press to unlock.

2、 Channel switch/pairing button(📶), long press for 3 seconds to enter the pairing state, short press to select a different dog terminal.

3、 Level setting button (⚙️) , short press to select (electric shock) (vibration) adjustment level, long press to enter the electronic fence (Model X3 Only)

4、 Vibrate button (📳) , short press to vibrate once, long press the vibrate for 8 seconds to stop.

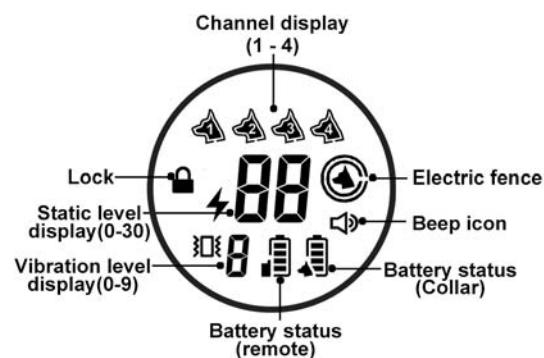
5、 Static button (⚡) , short press the electric shock for one second, long press the electric shock for 8 seconds to stop. Release the hand and then press the (Static button) to start the

shock.

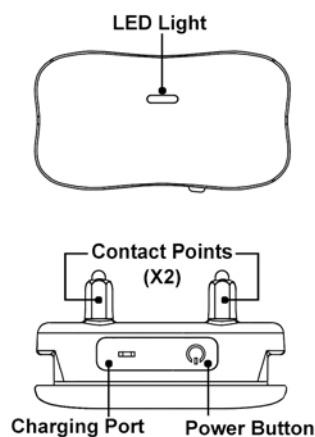
6、Flashlight button (💡) , cycle short press to switch between long on/flash. (standalone system, still available after shutdown)

7、Beep button, short press (🔊) (▲) (▶) (▼) (◀), it will emit 5 different sounds. When the key is locked, press and hold the (🔊) for 3 seconds to make a music sound.

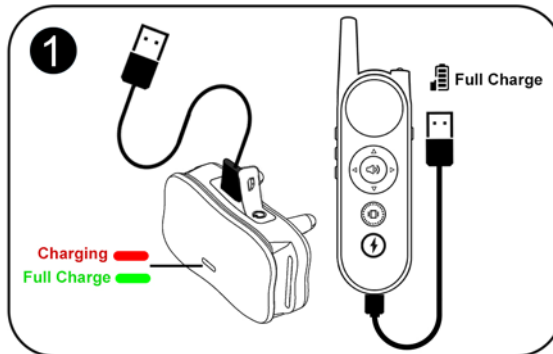
Screen



Collar



Quick User Manual



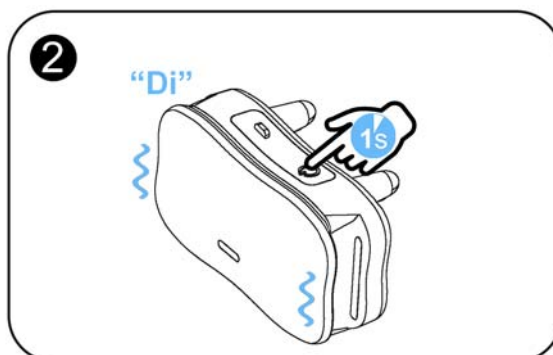
1.Charging

1.1 Use the included USB cable to fully charge the collar and remote control at 5V.

1.2 When the remote control is fully charged, the battery display is full.

1.3 When the collar is fully charged, the red light turns green. It fully charges in about two hours.

1.4 The battery level is shown on the remote control screen.



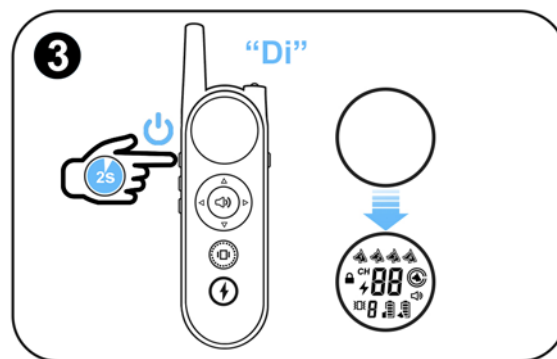
2.Collar On/Off

2.1 Short press the power button (⏻) for 1 second, the collar


will beep and vibrate to turn on.


2.2 After it powers on, the green light flashes once for 2 secs, automatically enter the sleep state if it is not used for 6 minutes, and the green light flashes once for 6 secs.

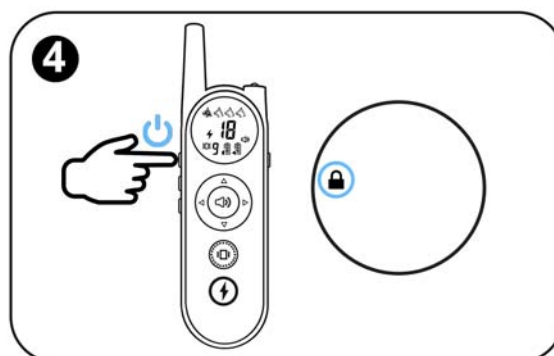
2.3 Press and hold for 2 seconds to power off.



3.Remote control On/Off

3.1 Long press the button () for 2 seconds to turn on/off. There will be a beep and the screen will light up.

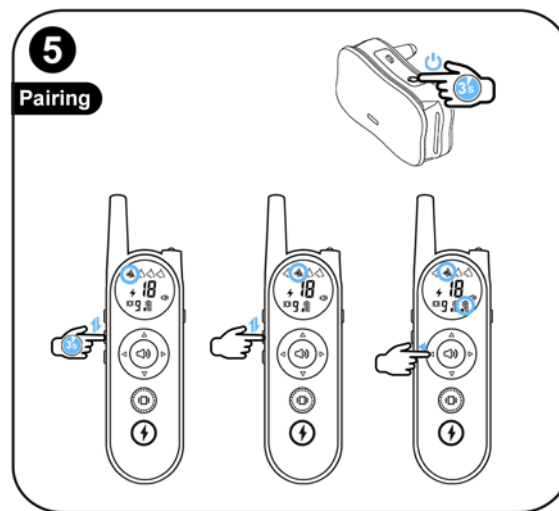
3.2 Long press the button () for 2 seconds, a beep will be heard and the display will turn off.



4.Keyboard lock

4.1 Short press to lock the button (🔒) , and then short press to unlock.

4.2 Recommended to lock the buttons when not in use to prevent misuse.



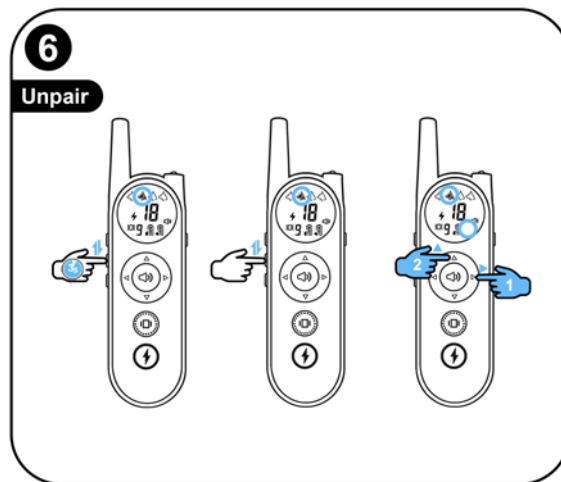
5.Pairing(One-to-one has been paired in the factory, you can use it directly)

5.1 Make sure the collar is turned off. Press and hold the power button(🔌)for 3 seconds, until 4 beeps are heard, the indicator light flashes alternately, then it is ready to pair.

5.2 Press and hold the remote control channel switch button (📶) for 3 seconds within 30secs, then short the button (📶) to select the collar that will be paired.

5.3 Short press the left arrow button (◀) on the remote control to confirm the pairing, and a beep means the pairing is successful.

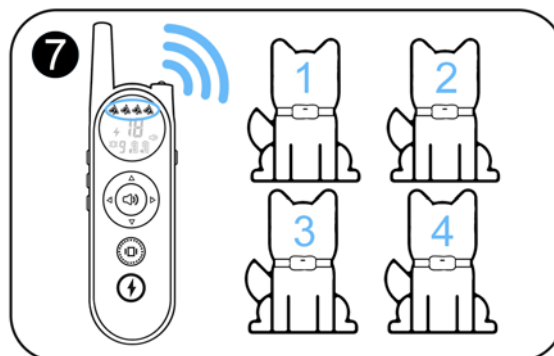
5.4 The icon on the remote will stop flashing after pairing is complete. The battery level of the collar is displayed on the remote control screen.



6. Cancel pairing

6.1 Long press the remote control channel switch button (⚡) for 3 seconds, then the icon will flash, and Select the collar you want to cancel.


6.2 Short press the (▶) key, then press the (▲) button to cancel the pairing.



7. Pairing with multiple collars

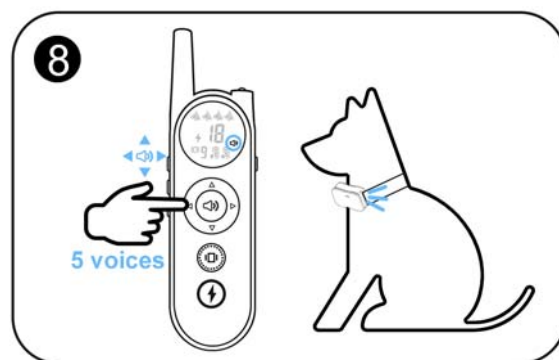
Repeat the above operations, you can continue to pair other collars.

7.1 One channel has one collar, and multiple collars cannot be connected to the same channel.

7.2 After all four channels are paired, you can press the channel switch button () to select 1 to 4 channels to control a single collars, or control all collars at the same time.

7.3 Vibration and shock levels can be individually adjusted when controlling a single collar.

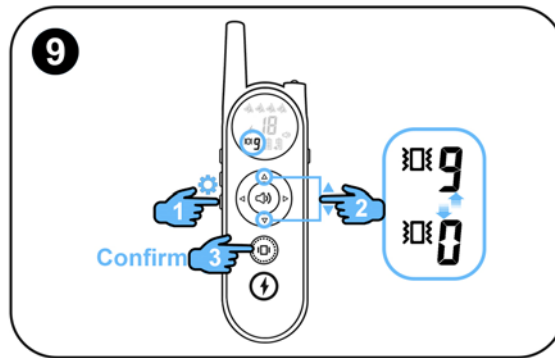
7.4 4. When controlling multiple collars at the same time, the vibration level is the same, and the electric shock function is turned off.



8.Beep tone command

8.1 Short press the remote control arrow and volume key and the collar will emit 5 different sounds.

8.2 Long press to make a continuous sound.

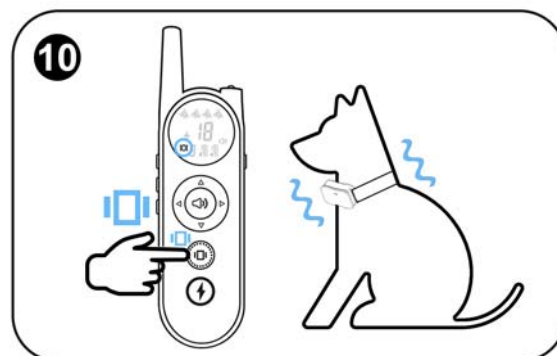


9.Vibration intensity adjustment

9.1 Short press the Level setting button (⚙️) and the vibration icon will flash.

9.2 Press the up and down keys to adjust the level (0-9).

9.3 Press (🔊) to save. 0 is to stop the vibration, 9 is the strongest vibration.

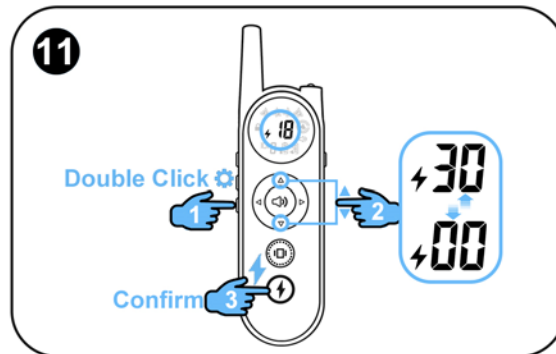


10.Vibration command

10.1 Short press the vibration button (🔊) and the collar will vibrate once.

10.2 Long press the vibration button (🔊), the collar will vibrate continuously and will stop after 8 seconds.

10.3 When controlling multiple collars at the same time, the vibration level is the current set value.



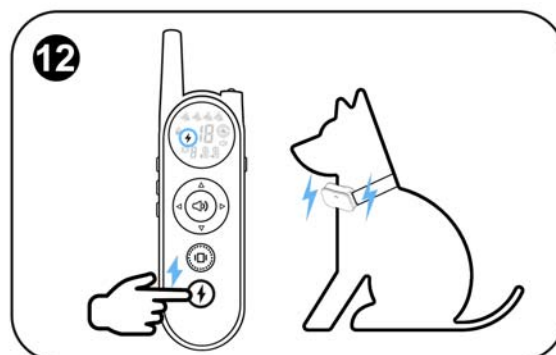
11.Shock intensity adjustment

11.1 Short press the Level setting button (⚙️) , the shock icon will flash.

11.2 Press the up and down button to adjust the value (0-30).

11.3 Press (⚡) to save. 0 is to stop, 30 is the strongest level.

11.4 Recommended to start training the dog from level 1, observe its response, and then slowly increase it.

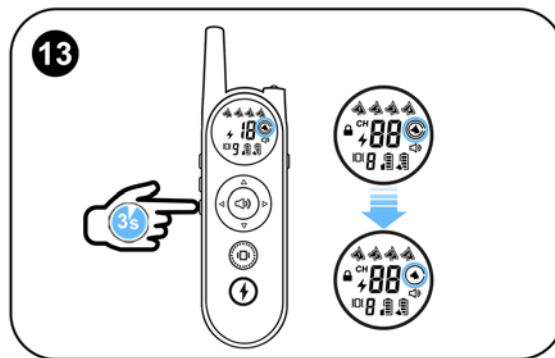


12.Shock command

12.1 Short press the electric shock button (⚡) and there will be an electric shock for one second.

12.2 Long press the electric shock button (⚡) and the electric shock will stop after 8 seconds.

12.3 Release the shock button and press the shock button again to activate the shock.



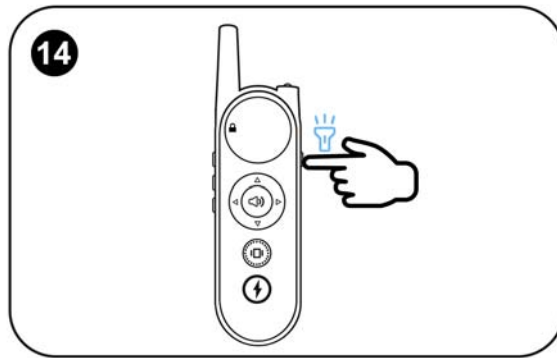
13. Electronic fence function (Model X3 Only)

13.1 Long press the function selection button (⚙️) for 3 seconds and the electronic fence icon will pop up.

13.2 A double circle is displayed, indicating that the fence distance is 150 meters.

13.3 Short press the function selection button again and a single circle is displayed, indicating that the fence distance is 300 meters.

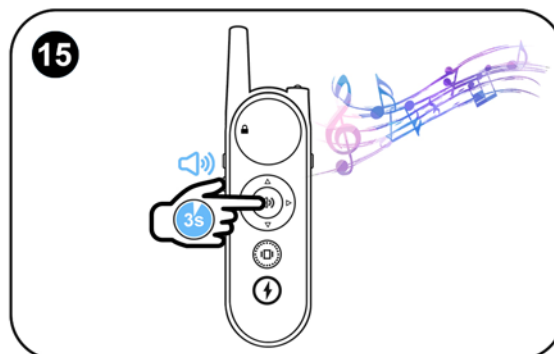
13.4 When the collar exceeds the specified distance and the remote control will emit a beep warning sound.



14. Turn on the flashlight

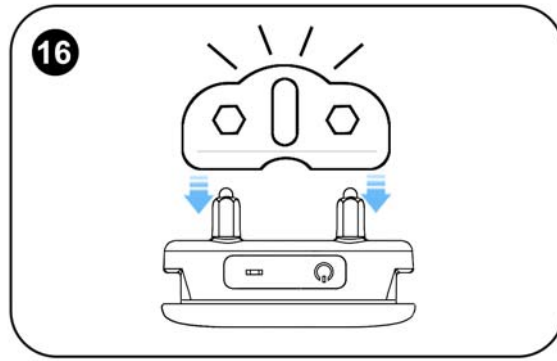
14.1 Regardless of power on/off, short press the flashlight button (💡) and the light will turn on.

14.2 Short press again and the flashlight will switch between 3 modes: long on/on/off.



15. Song playing

After the collar and the remote control are paired normally, in the locked state, long press the beep button (🔊) for 3 seconds and the collar will play music for 10 seconds.



16.Shock intensity test

16.1 Screw the contact points onto the collar.

16.2 Tighten the contact points with neon bulb, and then put on the conductive cap. Also the contact point of neon bulb is aligned with the Contact points.

16.3 Level 1: Neon faint, Level 30: Highlight.

Training Tips

1.Choose a suitable contact points and Silicone cap, and put it on the dog's neck.

2.If the hair is too thick, separate it by hand so that the Silicone cap touches the skin, making sure both electrodes touch the skin at the same time.

3.Be sure to leave one finger between the collar and the dog's neck.Dog zippers must not be attached to collars.

4.Shock training is not recommended for dogs under 6 months of age, aged, in poor health, pregnant, aggressive, or aggressive towards humans.

5.In order to make your pet less shocked by electric shock, it is recommended to use sound training first, then vibration, and finally use electric shock training. Then you can train your pet step by step.

6.The level of electric shock should start from level 1.

Important Safety Information

1.Disassembly of the collar is strictly prohibited under any circumstances, as it may destroy the waterproof function and thus void the product warranty.

2.If you want to test the electric shock function of the product, please use the delivered neon bulb for testing, do not test with your hands to avoid accidental injury.

3.Note that interference from the environment may cause the product to not work properly, such as high-voltage facilities, communication towers, thunderstorms and strong winds, large buildings, strong electromagnetic interference, etc.

Trouble shooting

1. When pressing buttons such as vibration or electric shock, and there is no response, you should first check:

- 1.1 Check if the remote control and collar are turned on.
- 1.2 Check whether the battery power of the remote control and collar is sufficient.
- 1.3 Check if the charger is 5V, or try another charging cable.
- 1.4 If the battery has not been used for a long time and the battery voltage is lower than the charging start voltage, it should be charged for a different period of time.
- 1.5 Verify that the collar is providing stimulation to your pet by placing a test light on the collar.

2. If the shock is weak, or has no effect on pets at all, you should check first.

- 2.1 Make sure that the contact points of the collar are snug against the pet's skin.
- 2.2 Try increasing the shock level.

3. If the remote control and collar do not respond or cannot receive signals, you should check first:

- 3.1 Check whether the remote control and the collar are successfully

matched first.

3.2 If it cannot be paired, the collar and remote control should be fully charged first. The collar must be in the off state, and then long press the power button for 3 seconds to enter the red and green light flashing state before pairing (valid time is 30 seconds).

3.3 Check whether the remote control buttons are pressed.

3.4 Check whether there is a strong signal, electromagnetic field interference, etc. You can cancel the pairing first, and then re-pairing can automatically select a new channel to avoid interference.

4.The collar automatically emits sound, vibration, or electric shock signal, you can check first: check whether the remote control buttons are stuck.

Operating environment and maintenance

1.Do not operate the device in a temperature environment of 104°F and above.

2.Do not use the remote control when it is snowing, it may cause water ingress and damage the remote control.

3.Do not use this product in places with strong electromagnetic interference, which will seriously damage the performance of the product.

4.Avoid dropping the device on a hard surface or applying excessive pressure to it.

5.Do not use it in a corrosive environment, so as not to cause discoloration, deformation and other damage to the appearance of the product.

6.When not using this product, wipe the surface of the product clean, turn off the power, put it in the box, and put it in a cool and dry place.

7.The collar cannot be immersed in water for a long time.

8.If the remote control falls into the water, please take it out quickly and turn off the power, and then it can be used normally after drying the water.

FCC Warning

This device complies with part 15 of the FCC Rules. Operation is subject to the following two conditions: (1) This device may not cause harmful interference, and (2) this device must accept any interference received, including interference that may cause undesired operation.

Note: This equipment has been tested and found to comply with the limits for a Class B digital device, pursuant to part 15 of the FCC

Rules. These limits are designed to provide reasonable protection against harmful interference in a residential installation. This

equipment generates, uses and can radiate radio frequency energy and,

if not installed and used in accordance with the instructions, may cause harmful interference to radio communications. However, there is no guarantee that interference will not occur in a particular installation. If this equipment does cause harmful interference to radio or television reception, which can be determined by turning the equipment off and on, the user is encouraged to try to correct the interference by one or more of the following measures:

- Reorient or relocate the receiving antenna.
- Increase the separation between the equipment and collar.
- Connect the equipment into an outlet on a circuit different from that to which the collar is connected.
- Consult the dealer or an experienced radio/TV technician for help.

Note: The Grantee is not responsible for any changes or modifications not expressly approved by the party responsible for compliance. such modifications could void the user's authority to operate the equipment.

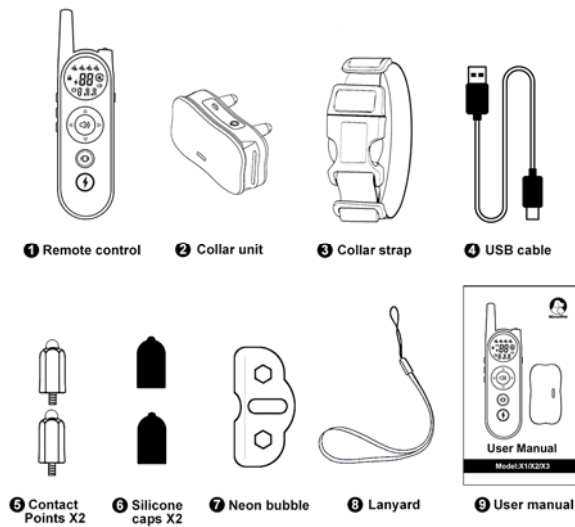
The device has been evaluated to meet general RF exposure requirement.

The device can be used in portable exposure condition without restriction.

Specification

Specification	
Model	X1/X2/X3
Packing size	6.7*4.49*1.73 inches
Package weight	0.63 Pounds
Remote control weight	0.15 Pounds
Collar weight	0.18 Pounds
Adjustable range of collar	Diameter 3.94–7 inches
Suitable for dogs weight	10–130 Pounds
Collar IP rating	IPX7
Remote control waterproof rating	Not waterproof
Collar battery capacity	350MA
Remote control battery capacity	800MA
Collar charging time	2 hours
Remote control charging time	2 hours
Collar standby time	185 days
Remote control standby time	185 days
Collar charging interface	Type-C connection
Collar and remote control reception range (X1)	Obstacles 1/4 Mile, open 3/4 Mile
Collar and remote control reception range (X2 X3)	Obstacles 1/3 Mile, open 1.1 5Mile
Signal receiving method	Two-way reception
Training mode	Tone/Vibration/Shot
Vibration level	0–9
Shock level	0–30
Power consumption of the collar/remote control	9 μ A
Collar standby power consumption	60 μ A
Remote control standby power consumption	48 μ A

In the Box



1、 Remote control 1PCS

2、 Collar unit 1PCS

3、 Collar strap 1PCS

4、 USB cable 1PCS

5、 Contact Points 2PCS

6、 Silicone cap 2PCS

7、 Neon bubble 1PCS

8、 Lanyard 1PCS

9、 User Manual 1PCS

Customer Services Email: mimofpet@outlook.com