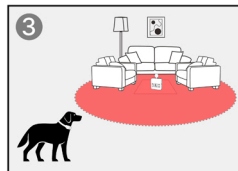
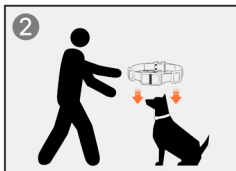
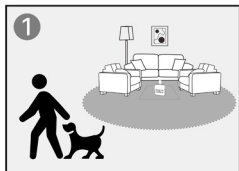


Start Your Pet's First Training Session

1. Move your pet out of the barrier area.
2. Power on the receiver collar and put it around your pet's neck. Make sure the receiver is directly below your pet's neck.
3. Allow your pet to roam freely to learn the new boundary.



If your pet is confused or does not understand how to avoid the barrier area, you can teach your pet how to avoid the barrier area by following these simple training steps:

1. Wear a second non-metal collar on top of your pet's collar and attach a long leash. (Make sure this collar does not put pressure on the contact point of the receiving collar.)
2. Walk your pet to the barrier area. Once you hear a sound or find your pet receiving a static correction, gently pull it out of the barrier area and back to the safe area.
3. Give your pet a food reward every time it leaves the barrier area.
4. Practice this technique several times until you feel your pet has mastered the method of avoiding the barrier area.

Please do not force or lure your pet into the barrier area

Operating Environment And Maintenance

- ⚠ Do not operate the device in temperatures of 104°F and above
- ⚠ The barrier launcher is not waterproof, please do not use this product in rain
- ⚠ Do not use this product in places with strong electromagnetic interference, which will seriously damage the performance of the product
- ⚠ Avoid dropping the device on a hard surface or applying excessive pressure to it
- ⚠ Do not use it in a corrosive environment, so as not to cause discoloration, deformation and other damage to the appearance of the product
- ⚠ When not using this product, wipe the surface of the product clean, turn off the power, put it in the box, and put it in a cool and dry place
- ⚠ The collar cannot be immersed in water for a long time
- ⚠ If the barrier transmitter falls into the water, please take it out quickly and turn off the power, and then it can be used normally after drying the water

FCC Warning

This device complies with part 15 of the FCC Rules. Operation is subject to the following two conditions:

(1) This device may not cause harmful interference, and (2) this device must accept any interference received, including interference that may cause undesired operation.

Note: This equipment has been tested and found to comply with the limits for a Class B digital device, pursuant to part 15 of the FCC Rules. These limits are designed to provide reasonable protection against harmful interference in a residential installation.

This equipment generates, uses and can radiate radio frequency energy and, if not installed and used in accordance with the instructions, may cause harmful interference to radio communications.

However, there is no guarantee that interference will not occur in a particular installation. If this equipment does cause harmful interference to radio or television reception, which can be determined by turning the equipment off and on, the user is encouraged to try to correct the interference by one or more of the following measures:

- Reorient or relocate the receiving antenna.
- Increase the separation between the equipment and collar.
- Connect the equipment into an outlet on a circuit different from that to which the collar is connected.
- Consult the dealer or an experienced radio/TV technician for help.

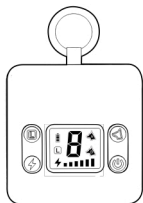
Note: The Grantee is not responsible for any changes or modifications not expressly approved by the party responsible for compliance, such modifications could void the user's authority to operate the equipment.

This equipment complies with FCC radiation exposure limits set forth for an uncontrolled environment, This equipment should be installed and operated with minimum distance 20cm between the radiator& your body.

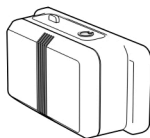
Specification

Model	B1
Packing size	6.1*5.4*1.97 inches
Barrier transmitter Weight	120.5g
Collar weight	64.5g
Adjustable of collar	Maximum circumference 23.6 inches
Suitable for dogs weight	10-130 Pounds
Collar waterproof rating	IPX7
Barrier transmitter waterproof rating	Not waterproof
Collar battery capacity	300mA
Barrier transmitter battery capacity	2500mA
Collar charging time	2 hours
Barrier transmitter charging time	5 hours
Collar working time	1 month
Barrier transmitter working time	9 days
Collar charging interface	Type-C connection, use ordinary charger head, not fast charger head
Signal receiving method	One-way reception
Static level	0-6
Average power consumption of the collar	116mA
Barrier transmitter average power consumption	11.76mA
Collar standby power consumption	13.8μA
Barrier transmitter standby power consumption	37μA

In The Box



1 Pet barrier transmitter



2 Collar unit



3 Collar strap



4 USB cable



5 Test light



6 Contact Points X2



7 User manual

1. Pet barrier transmitter 1PCS

2. Collar unit 1PCS

3. Collar strap 1PCS

4. USB cable 1PCS

5. Test light 1PCS

6. Contact points 2PCS

7. User manual 1PCS

