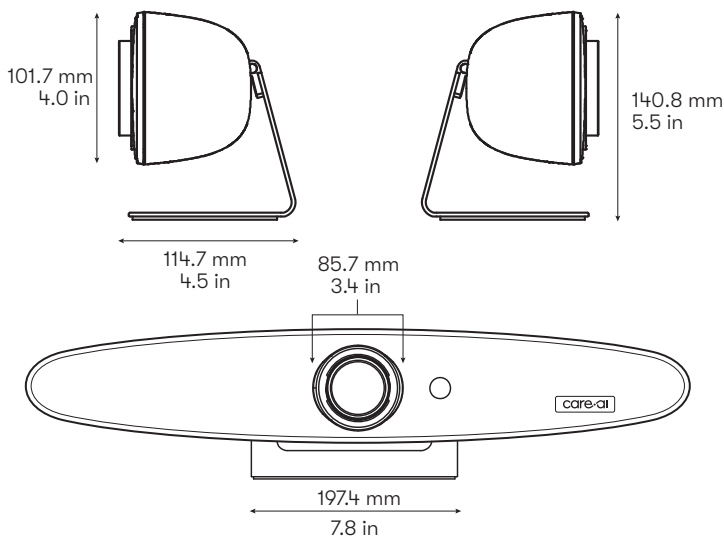
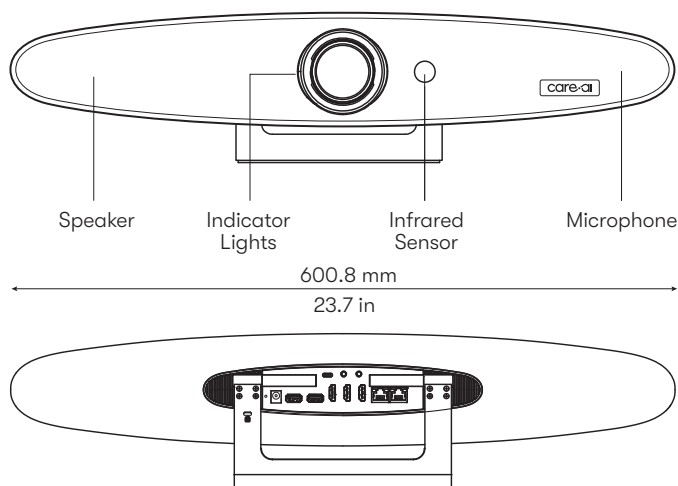


AMS-R2W

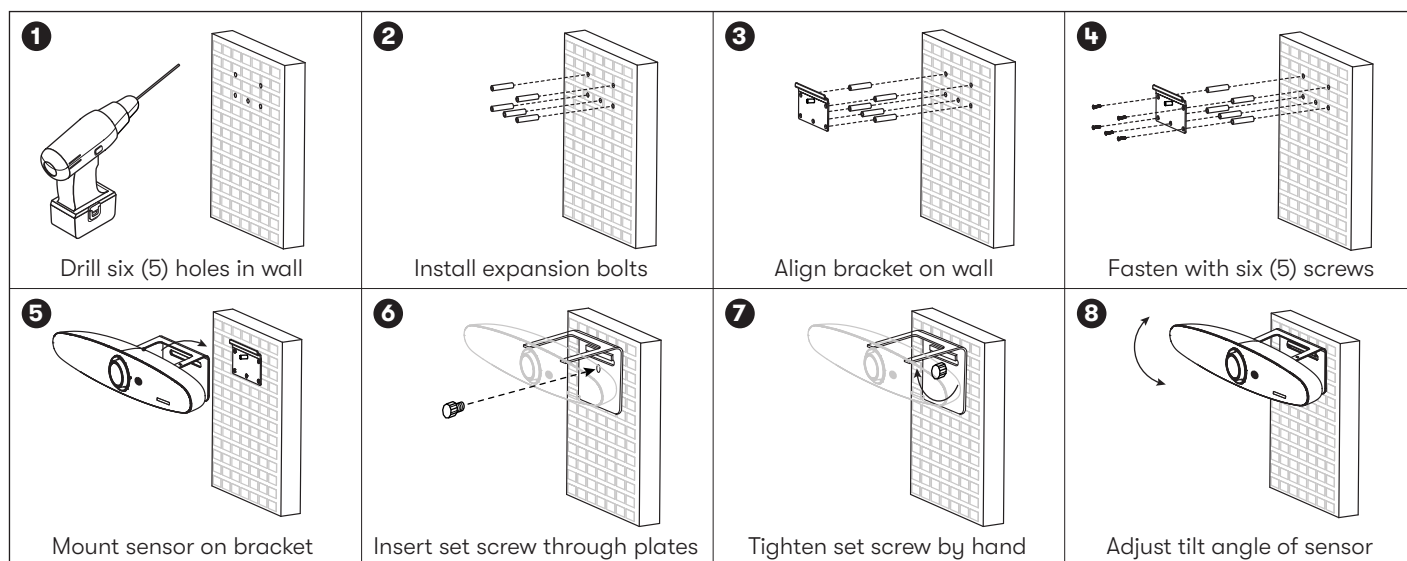
Quick Start Guide



PRODUCT DIMENSIONS

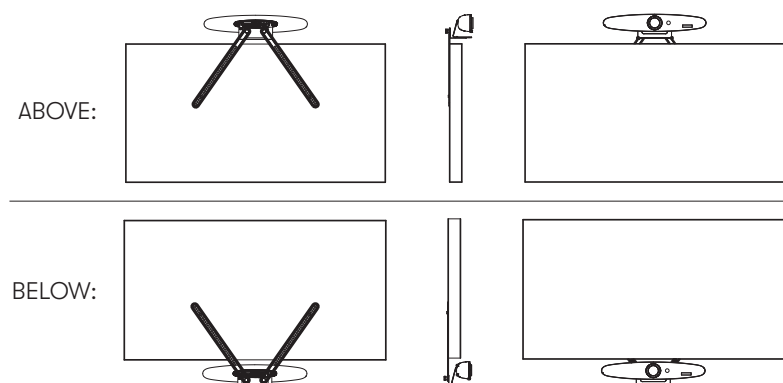


INSTALLATION (WALL)



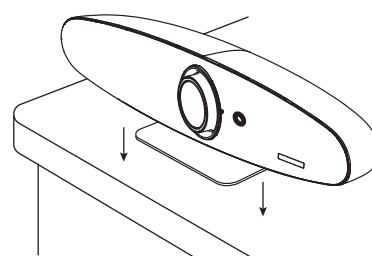
INSTALLATION (TV MOUNT)

Use speaker bracket (not included) to mount sensor above/below TV.



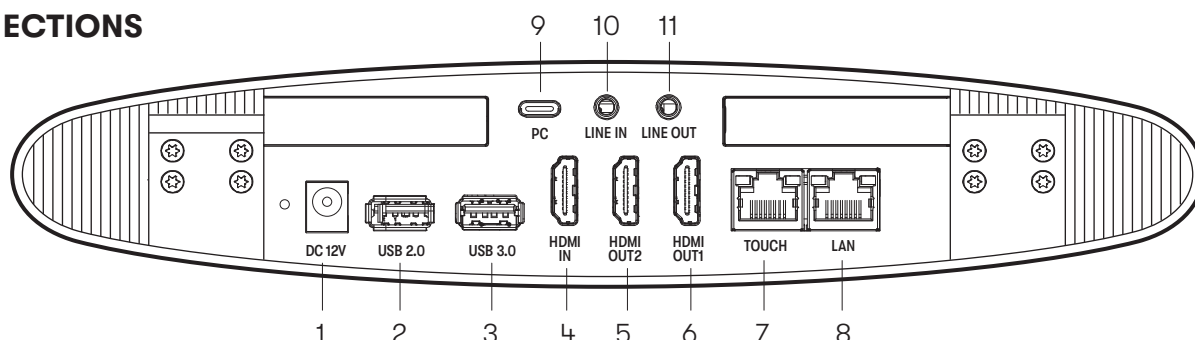
INSTALLATION (DESKTOP)

Rotate bracket downward, then place sensor on a desktop or other flat, stable surface, using anti-slip pad to keep device steady.



AMS-R2W Quick Start Guide (cont'd.)

CONNECTIONS



No.	Name	Description
1	DC 12V	Power interface.
2	USB 2.0	Disabled.
3	USB 3.0	Disabled.
4	HDMI In	Connect Set-Top Box or other Cable TV devices (supports audio input)
5	HDMI Out2	Connect Set-Top Box or other Cable TV devices (no audio support)
6	HDMI Out1	Connect to the R2 Sensor and HDTV with HDMI cable (supports audio output / mutes automatically while using built-in speaker)
7	Touch	Disabled.
8	LAN	Connect to Internet with Ethernet cable.
9	PC	Disabled.
10	LINE IN	Disabled.
11	LINE OUT	3.5mm audio output interface.

Power Connection

- Connect the device to a standard 100V AC power outlet with the supplied power adapter.

Network Connection

- Connect to the LAN with an Ethernet cable.
- Or: connect to the LAN via Wi-Fi.

Audio Input

- Audio input via the built-in microphone.

Audio Output

- Audio output via the built-in speaker.
- Or: connect TV to the HDMI OUT1 interface with the HDMI cable.

Image Input

- Connect Set-Top Box or other Cable TV devices to the HDMI IN interface with the HDMI cable.

Image Output

- Connect TV and other display devices to the HDMI OUT1 interface with the HDMI cable to output the main image.

CE Statements:

1) RF exposure information: The Maximum Permissible Exposure (MPE) level has been calculated based on a distance of $d=20$ cm between the device and the human body. To maintain compliance with RF exposure requirements, always maintain a 20cm distance between the device and any human body. 2) Bluetooth (2402-2480MHz) Max EIRP is 9.25dBm 3) Declaration of Conformity: Vuaant Inc. hereby declares that this Type X3 radio equipment is in compliance with directive 2014/53/EU and RER 2017 (SI 2017/1206). This Declaration of Conformity is available at the following Internet address: <http://www.care.ai/compliance/ce>

FCC Statements:

This device complies with Part 15 of the FCC Rules. Operation is subject to the following two conditions: (1) this device may not cause harmful interference; and (2) this device must accept any interference received, including interference that may cause undesired operation. NOTE: The manufacturer is not responsible for any radio or TV interference caused by unauthorized modifications or changes to this equipment. Such modifications or changes could void the user's authority to operate the equipment. NOTE: This equipment has been tested and found to comply with the limits for a Class B digital device, pursuant to Part 15 of the FCC Rules. These limits are designed to provide reasonable protection against harmful interference in a residential installation. This equipment can radiate radio frequency energy and, if not installed and used in accordance with the instructions, may cause harmful interference to radio communications. Nonetheless, there is no guarantee that interference will not occur in a particular installation. If this equipment does cause harmful interference to radio or television reception, which can be determined by turning the equipment off and on, the user is encouraged to try to correct the interference by one or more of the following measures: 1) Reorient or relocate the receiving antenna; 2) Increase the separation between the equipment and receiver; 3) Connect the equipment to an electric outlet on a circuit different from that to which the receiver is connected; 4) Consult the dealer or an experienced radio/TV technician for help.

Federal Communication Commission (FCC) Radiation Exposure Statement

When using the product, maintain a distance of 20cm from the body to ensure compliance with RF exposure requirements. The Declaration of Conformity is available at the following Internet address: <http://www.care.ai/compliance/fcc>