

Milerong

USER MANUAL

3 CHANNEL
DASHCAM



Model:S61

S61



Milerong

- We sincerely hope that you understand that if you only provide a negative rating or feedback, we will not be able to provide assistance. Please be sure to contact us through any of the following methods, and we will assist you.
- ① Mail-box: milerong_service@163.com
- ② Contact us on the [Amazon Order Platform](#)



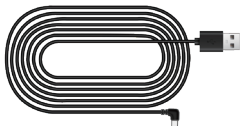
- PACKAGE CONTENTS -



Front Cam



Suction Cup+ 3M bracket



11.48FT Type-C Car Charger Cable



19.68 FT Rear Camera



64G SD Card
(already inserted in item)



USB Reader
(used to insert SD Card and
playback on PC)



Card Needle
(Poke the R hole to reset the dash
cam when it not work)



**2 set of rear camera
install tool**

Milerong

**USER
MANUAL**



User Manual



10X Cable Hiding Clip



Car Wire Trim Tool
(helping hiding cable)



Lens Cleaning Cloth



Type-C Cable
(used to connect dash cam and
playback on PC)



USB Car Charger

- FCC Warning -

This device complies with Part 15 of the FCC Rules. Operation is subject to the following two conditions:

(1) This device may not cause harmful interference, and (2) this device must accept any interference received, including interference that may cause undesired operation.

NOTE 1: This equipment has been tested and found to comply with the limits for a Class B digital device, pursuant to part 15 of the FCC Rules. These limits are designed to provide reasonable protection against harmful interference in a residential installation. This equipment generates, uses and can radiate radio frequency energy and, if not installed and used in accordance with the instructions, may cause harmful interference to radio communications. However, there is no guarantee that interference will not occur in a particular installation. If this equipment does cause harmful interference to radio or television reception, which can be determined by turning the equipment off and on, the user is encouraged to try to correct the interference by one or more of the following measures:

- Reorient or relocate the receiving antenna.
- Increase the separation between the equipment and receiver.
- Connect the equipment into an outlet on a circuit different from that to which the receiver is connected.
- Consult the dealer or an experienced radio/TV technician for help.

NOTE 2: Any changes or modifications to this unit not expressly approved by the party responsible for compliance could void the user's authority to operate the equipment.

RF Exposure Statement

To maintain compliance with FCC'S RF Exposure guidelines, This equipment should be installed and operated with minimum 20cm between the radiator and your body. This device and its antenna(s) must not be co-located or operation in conjunction with any other antenna or transmitter.

- WARRANTY -

We are truly thankful to you to choose our upgraded S61 Dash Cam Front and Rear and Inside

All our products are covered by **one-year** warranty.

For questions, support, or warranty claims, please feel free to contact us. Milerong offer you lifetime after-sales support and 7*24 hours technical service.

? MORE QUESTION

- 1 Not happy with shopping?
- 2 Defective item?
- 3 Missing parts or need accessory replacement?
- 4 Inaccurate website description?

Please contact with us before returning this item.

Note: If your SD Card, Car Charger, Suction Cup broken, please contact seller for free replacement.

📞 How to contact with us

Way 1: Mail-box: ***milerong_service@163.com***

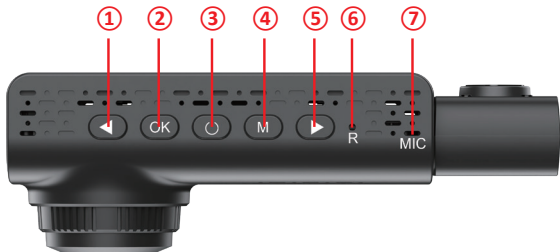
Way 2: Contact with ***“Amazon Buyer Service”*** - Ask them to help found the seller's after-sales customer service (Due to the nature of the product, Amazon Buyer Customer Service cannot answer your product usage questions, so please contact our seller directly, hope you can understand.)



- Table of Contents -

Product Structure	01
Screen Icons	04
How to Connect with WiFi	05
Installation Guidance (details)	09
Install Front Cam	09
Install Rear Cam	12
Menu Setting	15
How to Playback the Recording Video	22
Questions & Answer	24
After-Sales Service	28

- Product Structure -



1 Left Button

- 1.Short press to switch display modes between front and rear and inside camera or front only,inside only, rear only.
- 2.Long press to turn on/off the dash cam microphone.
3. When you enter Menu Setting/Playback Mode, you can press "left" to choose what you need.

2 OK Button-Confirm what you choose

1. During Recording, press once to manually pause or start recording; Long press to take photo.
2. In the Menu Setting Interface, press once to enter and confirm the selection.
3. In the Playback Mode, press once to choose and playback the video / photo.

3 Power Button

1. Long press to turn on / off the dash cam.
2. Screensaver key: Press once to turn on / off the screen, but the dash cam still recording.

4 Menu Button

1. Press once to access the menu setting interface and tool interface to set function or date, and so on.
2. Return Key: Short press to return to the previous step or exit the current operation.
3. Long press to enter and exit the playback mode, and press one to switch Normal/photo/Locked/parking.

5 Right Button

1. Long press to turn on/off the wifi
2. When you enter Menu Setting/Playback Mode, you can press "Right" to choose what you need.
3. Short press to take photo when at recording mode.

6 Rest Button

(When you meet the freeze or other little problem of dash cam, you can use the needle to insert the little hole on the "R" button.)

7 Mic



8 SD Card Slot

The 64GB SD Card have already inserted, please format it before you use. (If the SD Card damaged or lost, please contact seller for a replacement)



9 Rear Camera Port

10 Mini Type-C Charging Port

- Screen Icons -



Recording Indicator

00:02

Video Time

2.5K

Resolution

2024/04/20

Date

18:21

Time



Charging



SD Card



G-Sensor



Microphone



WiFi

WIFI SSID: TF716-344d13cc
Wifi PASSWORD:12345678

WiFi Account & Password

Milerong

Dash Cam Brand

- How to Connect with WiFi -

1 Download the APP:

- Long press “ Right Button” to turn on the Wifi
- Press “M Button” to choose the “Wifi Info”
- Then you can see as below picture, scan code and download the APP “Elook”

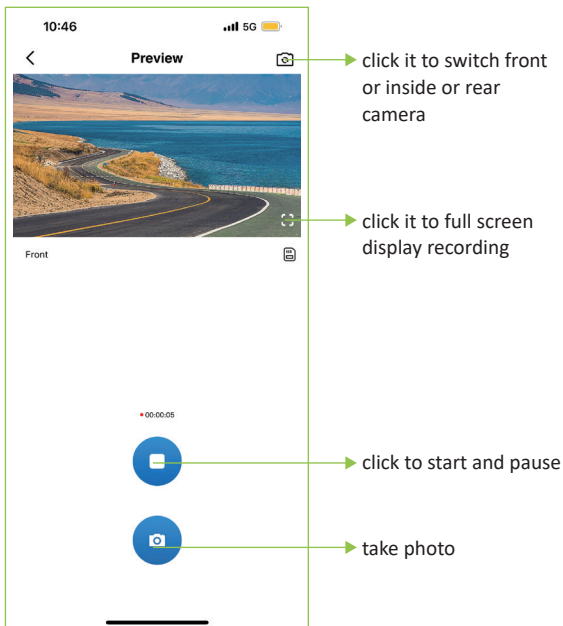


2 Use your phone to link the dash cam's WiFi:

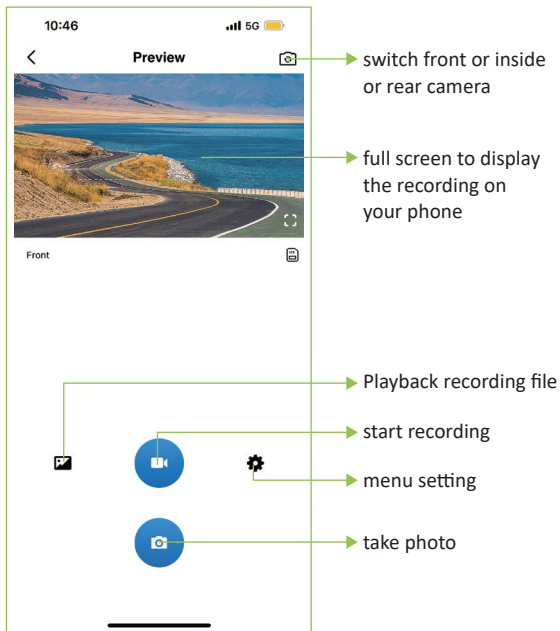
- Open your “ WLAN”
- Found the wifi account like “TF716-*****” & connect it
- WiFi Password: 12345678

3 Open the APP

Click “Connect Devices”:



• When stop recording:



Playback on your phone:

Click the video (image 1) directly then can enter the playback mode

Download : (image 2) you can choose to download the recording file on your phone directly . After download the file, you can choose **ONE-KEY Share it with Your Friends.**

Delete: choose and delete the recording file.



image 1

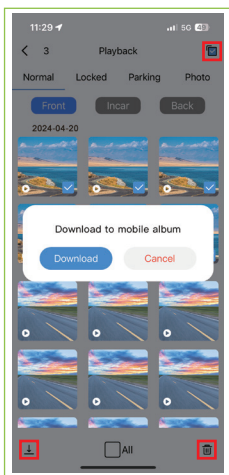


image 2

- Installation Guidance (details) -

Before installation , Please test and confirm both cam can be used well. (please use our cigarette lighter charger to charge)
Any question please mail with us : milerong_service@163.com

(If there is a problem with the dash cam before installation, you can contact with us to deal with it in time without wasting installation time. If there is a problem after installation, it can also be ruled out that it is not a machine problem but an installation problem.)

- Install Front Cam -



Connect the car charger to the camera and the cigarette lighter, hide the rest of the cable in the gap of the Interior trim board.

(If you want to use the rear cam , please plug the AV-IN port rear cable before turn on the dash cam)

The camera will auto-start recording once powered on.

◆ Insert the Memory Card

Gently push the memory card in until you hear a click, and allow the spring release to push the card in/out.

★ Please insert the card in the right direction.

★ Please format the SD Card at first time using.



(please confirm the direction of SD Card firstly)

◆ Mount the Front Cam onto the Windshield

① Clean the front windshield



② Install the suction cup



③ Adjust the angle of item

You can rotate the camera 360° to record to record the your preferred direction.



Loosen the screw, adjust the main camera's angle and then tighten it to lock at the desired angle.

④ Install the suction cup on the windshield and lock it



Remove the protective plastic film from the 3M bracket, then align it in the right place of windshield and stick it on firmly.

⑤ Connect the power

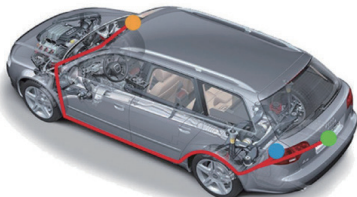
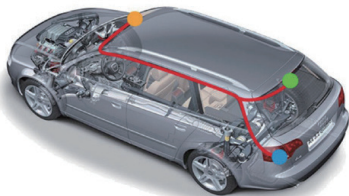


- Install Rear Cam -

There are two ways to place the camera.

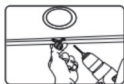
Way 1: Mount on the rear windshield. There is a 3M glue in the pack age for the rear camera . Please clean the rear windshield and find a suitable position, then paste the rear camera on the windshield.

Way 2: (Recommended!) Install it near the license plate.
There are fixing screws inside the package to help you fix it



◆ Detail on Rear Cam Installation

① Select a flat and central place that near the number plate lamp at the rear of the vehicle.



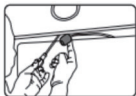
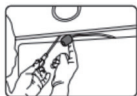
② Attach tape to the bracket of the camera to hold the camera in position while installing, and drill two small holes , one for the first screw, the second to run the reverse camera.

③ Use a screwdriver to fix the first screw leaving the screw loose enough to adjust the camera.

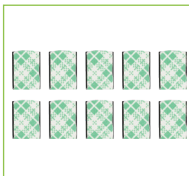


④ Insert the camera wire through the intended drilled hole, checking the installation position.

⑤ Mark the place that suitable for the second screw and drill a small hole for it.



⑥ Fix the second screw and securely tighten both screws.



Need using these accessories during installing the rear cam

⑦ After the installation is completed, connect the rear plug to the rear camera interface of the recorder.



Then start the car engine to turn on the dash cam front and rear.

(if turn on front cam firstly then connect rear cam to dash cam ,maybe will lead to short circuit black screen - reboot dash cam maybe can fix this problem)

- Menu Setting -



First, press once "M" Button to enter menu setting interface

Second, press "left" or "right" button to select other more funtion.

Third, press "OK" to enter and confirm the options.

And Press "M Button" to return previous step.

Note: If your phone connect the dash cam,you can't operate on the dash cam , please close the wifi and disconnect your phone first.

[Resolution]

Choose "Resolution", press "OK" button enter below picture:



[Loop Recording]

Choose “Loop Recording”, press “OK” button enter below picture:



When you turn on the function, the oldest videos will be overwritten. But the “locked” videos cannot be overwritten.

[Exposure]

Choose the “Exposure”, press “OK” button enter > 1/2/3/-1/-2/-3, The higher the number, the higher the exposure.

[G-Sensor]

Choose the “G-Sensor”, press “OK” button enter > Off/Low/Medium/High.

We suggest that you choose the “low”.

If the G-Sensor is activated, when over limitation braking/shocking/vibration occurs during recording, the existing recording video file will be automatically locked.

[Date Watermark]

You can turn on/off the date watermark of Video.

[Car OSD]

You can enter your license number (Limit the number of characters to 7) And then long press “OK” button to turn on this function, which will show your license number in the recorded video.

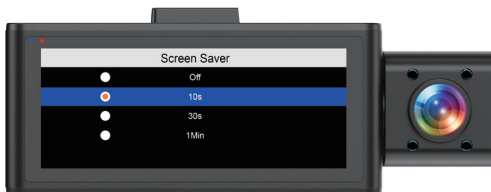


[Screen Saver]

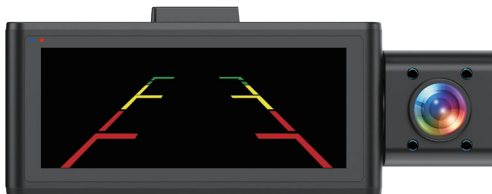
Choose “Screen Saver”, press “OK” button enter > Off / 10s / 30s / 1Min.

You can set it by adjusting different time intervals on menu. The screen is black, but the dash cam is still recording.

Also you can short press power button, then the dash cam will turn on screen saver.



[Setting Guideline]



[Incar Camera Mir]

You can adjust the inside camera display to mirror.

[Incar Camera Flip]

You can adjust the inside camera display to flips.

[Incar Camera Vid]

Turn on/off inside car camera.

When you set "off", the inside car camera will turn off and no recording. (But you still see the display inside on the dash cam, please ignore it.)

When you set "on", the inside car camera will record normal.

[Back Camera Mir]

You can adjust the rear camera display to mirror.

[Back Camera Flip]

You can adjust the rear camera display to flips.

[Volume]

You can adjust the button volume to low/Middle/High.

[Microphone]

Choose the “Microphone”, press “OK” button enter > off/on

You can set it to On or Off accordingly. If set to Off, the camera will not record the sound.

[Language]

Choose “Language”, press “OK” button

enter > English/French/German/Spanish/Chinese/Japanese etc.

[Time Setting]

Choose “Time Setting”, press “OK” button enter > Update the date & time

[Time Format]

Choose “Time Format”, press “OK” button enter > 24-Hours/
12-Hours

[Date Format]

Choose "Date Format", press "OK" button enter >YY/MM/DD,
MM/DD/YY, DD/MM/YY

[Frequency]

Choose "Frequency", press "OK" button enter >Auto/50HZ/
60HZ

[Brightness]

Choose "Brightness", press "OK" button enter >Low/Middle/
High

[Key Sound]

Choose the "Key Sound", press "OK"button enter > off/on

[Boot Sound]

Choose the "Boot Sound", press "OK"button enter > off/on

[Wifi Switch]

Choose the "Wifi Switch", press "OK"button enter > off/on

[Wifi Info]

Choose the “Wifi Info”, press “OK” button enter



[Format SD]

Choose “Format SD”, press “OK” button enter > Clear SD card data

In order to a Clean, Smooth, Comfortable using experience, we suggest you format your SD card once a month

[Reset Factory]

Choose “Reset Factory”, press “OK” button enter >Reset factory at once

[Version]

Choose “Version”, press “OK” button enter >Software Version

- How to Playback the Recording Video -

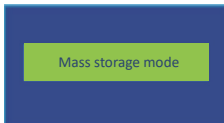
Way 1 to Playback on PC

On the computer, navigate to device drive.
"Video/F" is front camera videos, "Video/R"
is rear cam videos.
Select the video to playback.



Way 2 to Playback on PC

- To playback a video with USB cable, connect the USB Cable to the device and the computer. After the device powers up, press the OK Button to select "Mass storage mode".



Way 3 to Playback on Dash Cam

First, long press "M" Button to enter the playback mode.

Second, short press "M" Button to switch the file of Normal/Photo/Locked/Parking.

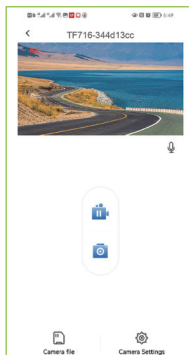
Third, press "left" or "right" button to select which video you want to playback, "OK" Button to playback. And Press "M Button" to return previous step.

Note: If your phone connects the dash cam, you can't playback on the dash cam, please close the wifi and disconnect your phone first.



Way 4 to Playback on Phone

Connect dash cam wifi, then playback the video on your phone, details please see [page *05 - How to Connect Wi-Fi](#)



- Questions & Answer -

1 Q: The camera can not record video or take photos?

A: Be sure you are using suitable SD card: Speed over Class 10.

Format your new SD card on the dash cam when first use!

2 Q: Camera power off after a few seconds.

A: Make sure to keep the camera plugged into power for daily use because the internal battery is designed to save your personal settings. If the dash cam still powers off after connecting to a usable power cord, please contact us for help.

3 Q: The camera automatically stop recording?

A: Format the SD card.

The G-sensor might be triggered too often and locks too many video files, try lower sensitivity.

4 Q: The camera can not turn on?

A: This camera features a built-in battery as internal power, it's used only for saving the videos file after external power supply cuts off (car turn off). This camera will not turn on without external power supply.

Check the power supply, make sure they are connected properly, power indicator on the power adapter is on, and the connectors are tight.

5 Q: Suction mount cannot attach on windshield well?

A: Please clean the windshield with a glass cleaning wipe. Removed the protective film.

Please soak suction mount to warm water for a moment. If it is still not working, please contact seller after-sale service to get a replacement.

6 Q: The rear cam cannot display?

A: (1). Please switch the camera display mode to double check the rear camera status.

(2). Please check whether the TYPE-C plug is in place and the cable is connected correctly.

(3).Try to disconnect the camera and clean the connector with some Medical alcohol and connect it again.

7 Q: The camera crashes or not responding to operations?

A: Use a pin or and unfolded paper clip, press the RESET button to restart the camera.

8 Q: I can't delete files on my SD card within the dash cam.

A: Check if these files are "locked". If so, please delete the files by manually.(Delete on PC or Format the files on dash your dash cam. Or you can unlock the files. Select locked files,press menu button,then press OK button, and then select unlock current or unlock all. It is optional!)

9 Q: Cannot see the reversing guide image when reversing.

A: Please check the wiring and make sure the RED LINE of rear camera is correctly linked to the POSITIVE ELECTRODE of the reserve light.

10 Q: Can not move the SD card.

A: With the card previously installed, you now need to push the card further inwards slightly, using your finger nail,until you hear and feel a small latch. Use the edge of a small coin if you have difficulty. Release pressure and the card will spring out sufficiently for you to take hold of it.

11 Q: The camera gets HOT?

A: It is normal for your camera to run slightly hot. Due to it is recording video at high speed, the dash cam maybe hot during using. (no more than 170°F/75C)

12 Q: Making Annoying sound?

A: Because the radio will transmitting frequency, the radio is magnetic, it will be interference for electronic products. If the two products are too close, they will interfere with each other. You can move the driving recorder to a position slightly away from the radio. Then it will not interfere each other and won't make a buzz buzz sound.

Low battery will also lead to buzzing sound. Please keep charge the dash cam for a while.

13 Q: Dash Camera Freezing/Lagging or Crashing?

A: Use a pin or unfolded paper clip, press the RES Button to restart the camera. Now the dash cam should turn ON.

If it still doesn't turn ON, then please CONTACT US.

14 Q: Color of the video or photo is not good?

A: Verify that Frequency option is set to 60Hz (North America) or set accordingly.

15 Q: Rear cam cable not longer enough.

A: If you need the extension cable for your Van/SUV, Please feel free contact with our seller to get one:

- After-Sales Service -

Warranty

- All our products are covered by **one-year** warranty.

Customer Support

- For questions, support, or warranty claims, please feel free to contact us. We will reply you within 12 hours.
- If you can provide the order number, photos or video to show your problem, we will be appreciated.
- **IMPORTANT:** Proof of original purchase (Online order receipt is also accepted) is required for any warranty service



Milerong is firmly committed to continually improving our products, services and customer experience. As our VIP customer, if you have any thoughts on how we can do better, we would appreciate your constructive feedback and suggestions. Please contact us via **Amazon Platform** or **milerong_service@163.com**.

Thank you for choosing Milerong!

