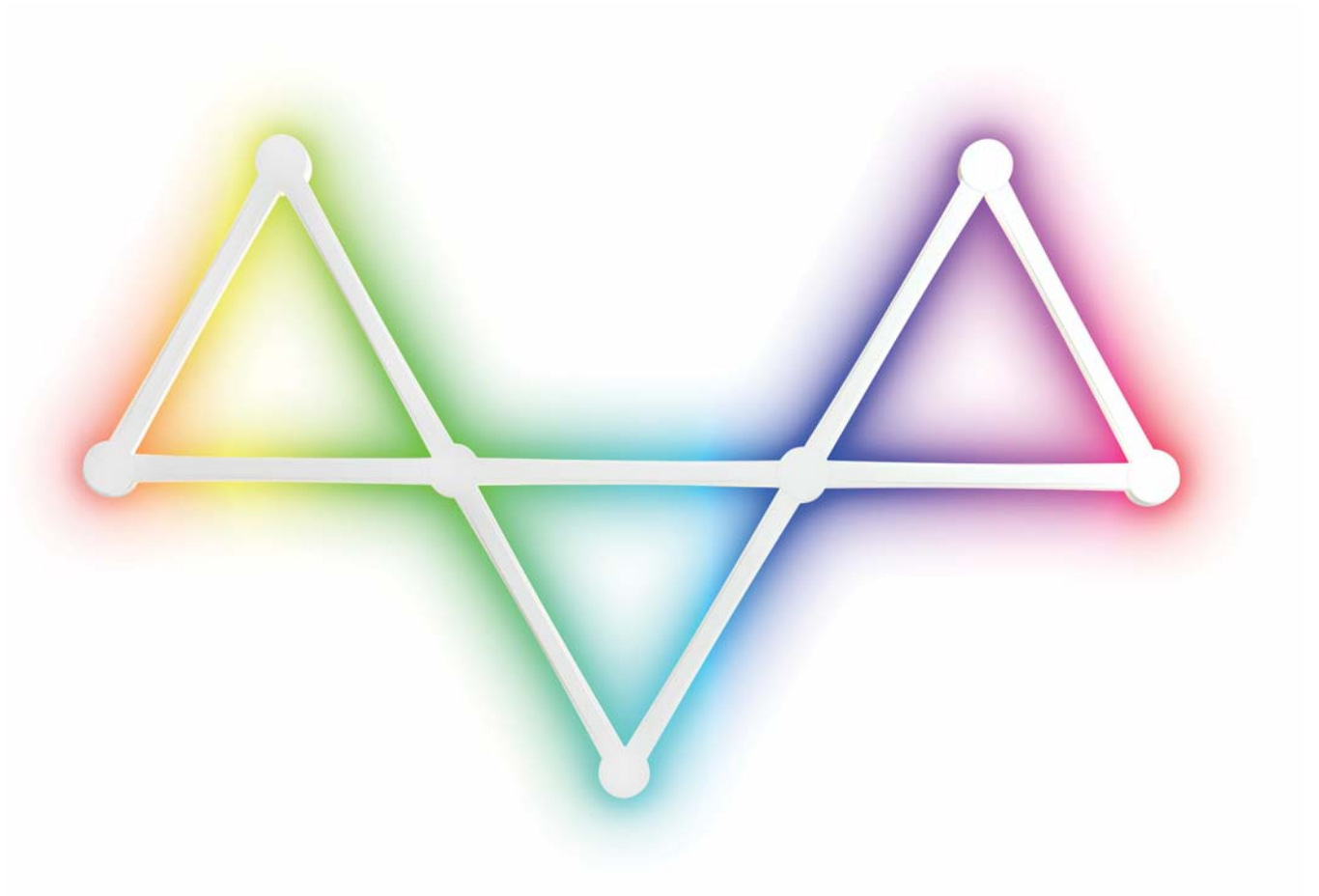


# Manual of JSK-P22

(Dual-mode Symphony Wall Light)

Please read the manual thoroughly before using it



# Contents

1.Instructions, Precautions, Product Introduction .....	01
2.Specification, APP function.....	02
3.Product matching network .....	03
4.APP control interface.....	05
5.Other information .....	08
6.Appearance buttons .....	09

## 1、Instructions

(1)Thank you for choosing JSK-P22 product.

(2)Please read this manual carefully to ensure that you fully understand the manual to avoid unnecessary damage before installing and using it.

## 2、Precautions

To keep the product in good condition and safety use, please follow the tips in this manual:

(1) Try to avoid minefields, strong magnetic fields, humid and high-voltage areas during installation.

(2) Ensure that the wiring is correct and firm to avoid accidents such as short circuit damage to components and burnout of the controller.

(3) Please check whether the input power supply of the controller (must match the power supply voltage of the controller) meets the product requirements. If any problem, please do not repair it by yourself. If in doubt, please contact the supplier.

## 3、Product Introduction

he dual-mode Symphony splicing light has controller PCBA with an external microphone and 7 physical buttons. Through physical buttons, mobile APP Perform lighting brightness, color, and various dynamic lighting change effects and light rhythm effects switching operations on the product.

## 4、Specification

Adapter	12V/2A
Matching network (2.4G)	WIFI/Bluetooth

## 5、APP Function

- (1) Support mobile phone to install smart life APP for control
- (2) Users can customize the product name after entering the APP operation page
- (3) In the effect page, there are a variety of music and scene modes, the user can set the speed/brightness/color for the various effect modes
- (4) Support Alexa, Google Assistant, Tmall Genie, Baidu
- (5) The APP supports ios10.0 or higher,Android 4.4 or higher
- (6) Complete the download and installation after searching for "智能生活" or "Smart Life" in the IOS App Store/Android google play App Store

You can also scan the QR code to download and install:

If only use it in mainland China

Please scan the following QR code to install:



If use it outside of mainland China

Please scan the following QR code to install:



## 6、Matching Network

When the product is correctly connected to the power, and the light flashes, indicates the product has entered the matching network mode.

(If the product is not in matching network mode, please press and hold the physical button to force it match network.)

### ● Matching Network:

(1) Turn on the Bluetooth and WIFI of the mobile phone, and log in to the APP to automatically match the Bluetooth network:

After entering the home page of the APP, a reminder for adding devices within the Bluetooth search range of the mobile phone will pop up (Figure 1). Select the Wi-Fi and enter the password (Figure 2), and follow the interface prompts to complete the device addition (Figure 3/4).



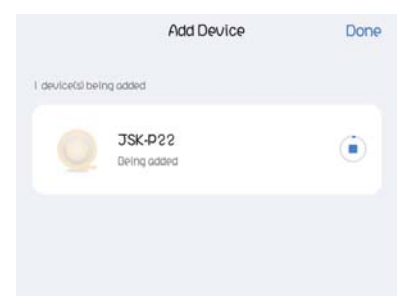
Devices to be added: 1



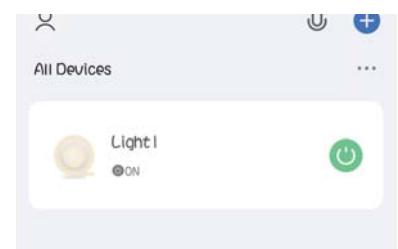
(Figure 1)



(Figure 2)



(Figure 3)

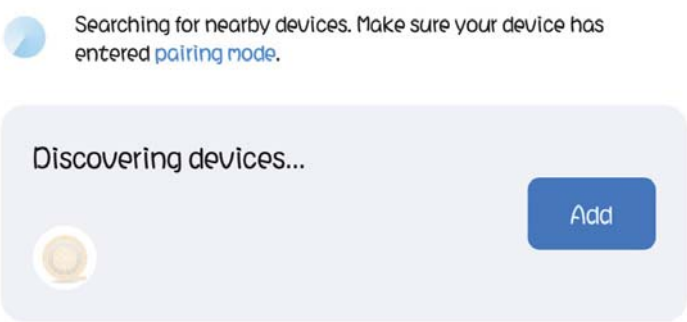


(Figure 4)

If no pop-up reminder after entering the APP homepage, by the "add" in the middle of the screen or "+" in the upper right corner of the screen, enter the add interface.

At this time, the Bluetooth continues to work, and the search status is displayed at the top of the screen. After searching for the product to be added, click the product icon (Figure 5)

Follow the interface reminder to complete the addition.

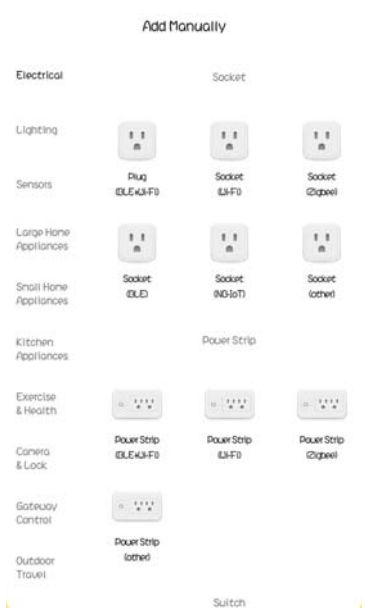


(Figure 5)

(2)Turn on the WIFI of your mobile phone and connect to the network manually:

Select the light strip (Bluetooth+Wi-Fi) in the lighting category (Figure 1), select Next (Figure 2) to enter the 2.4G network selection interface (Figure 3)

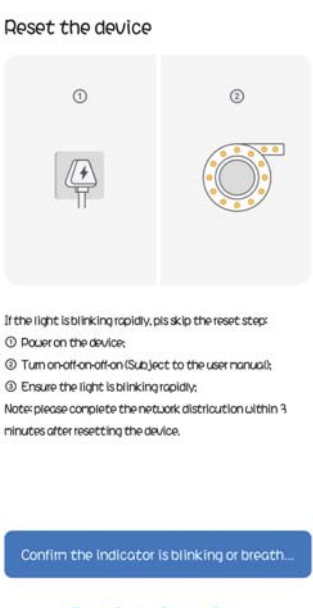
At this time, the light status selection (fast flashing/slow flashing) interface (Figure 4)



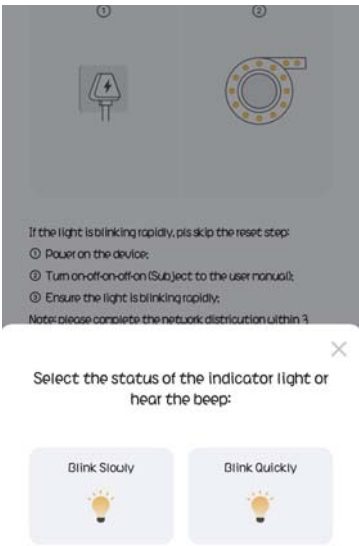
(Figure 1)



(Figure 2)



(Figure 3)

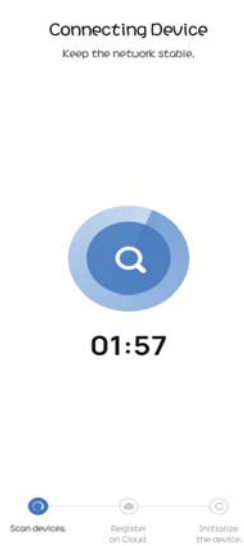


(Figure 4)

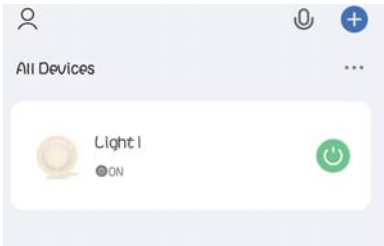
When the light flashes quickly, select the Wi-Fi used by the user and enter the password (Figure 1) and follow the interface operation prompts to complete the device addition (Figure 2/3)



(Figure 1)



(Figure 2)



(Figure 3)

When the light flashes slowly, select the Wi-Fi used by the user and enter the password (Figure 1) to enter the AP hotspot connection network jump interface (Figure 2) Click to jump to the mobile network settings (Picture 3), select the SmartLife-XXXX hotspot and return to the SmartLife APP,Wait for the APP to automatically complete the matching.



(Figure 1)



(Figure 2)

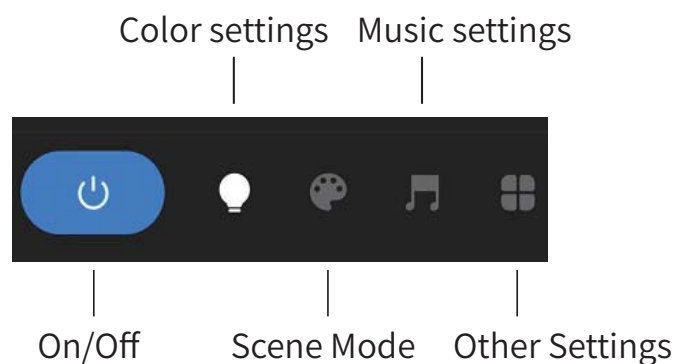


(Figure 3)

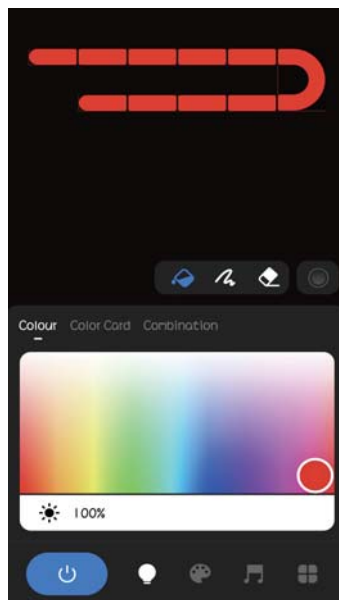
## 7、APP control interface

### ● 5 functional sections in APP control interface:

(1) The switch only controls on and off of the light, and does not influence the network connection between the mobile phone and the product



(2) Static light color setting interface:



Light monochrome settings:

The color selected under this page will become the color of all lamp beads



Set the color in segments:

After selecting the color on this page, click the lamp segment that needs to be set, to set or change the color of the lamp beads.



Erase color in segments:

In this page, click the lamp segment to be selected, so that the lamp beads in this area do not light up

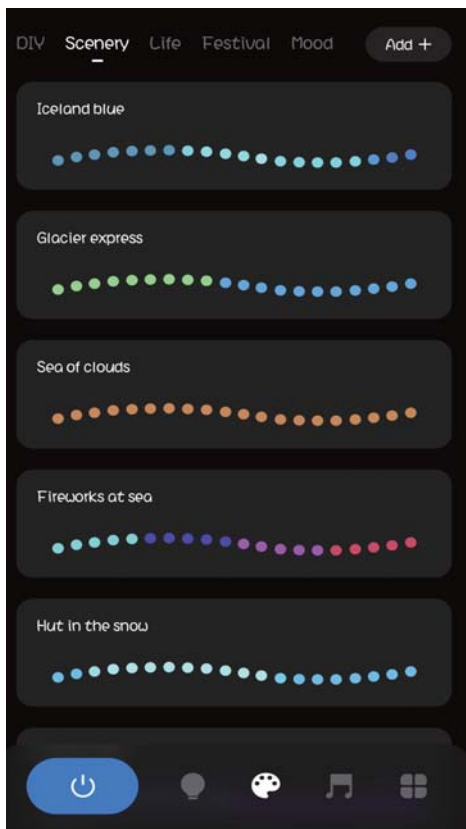


This function is optional when the lamp has two or more colors.

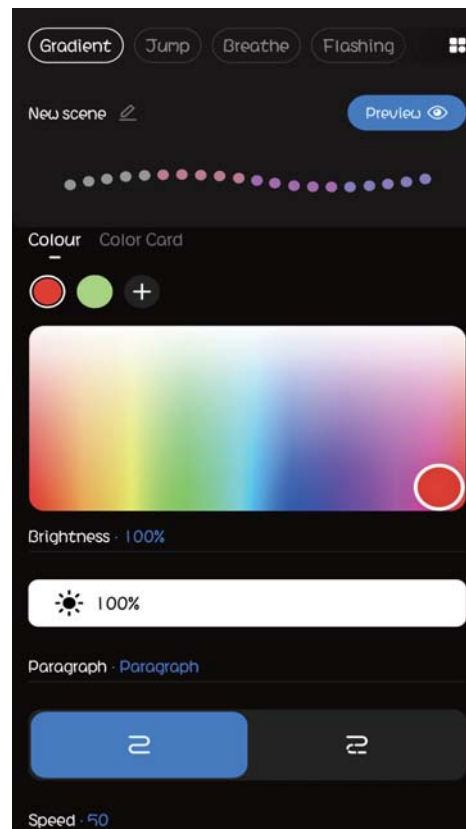
Make the adjacent color lamp beads between different color lamp beads produce a layered effect

### (3) Scene Mode

Scene mode, lighting effects are divided into five categories: DIY, scenery, life, festival, mood (Figure 1) Among them: scenery, life, festival, mood, 44 default scenes in total, which can't be changed. DIY can enter the add interface through the top of the page to make personalized settings and save (Figure 2).



(Figure 1)

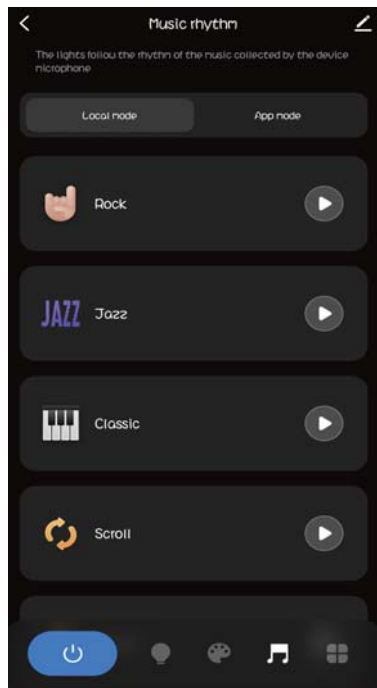


(Figure 2)

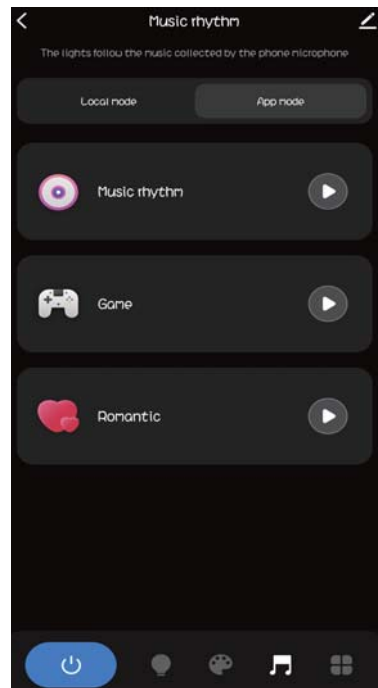
### (4) Music rhythm

It's divided into local mode (device radio Figure 1) and APP mode (mobile phone radio Figure 2). In the local mode, only the sensitivity of the microphone is adjustable in the current mode. App mode is default and cannot be changed.





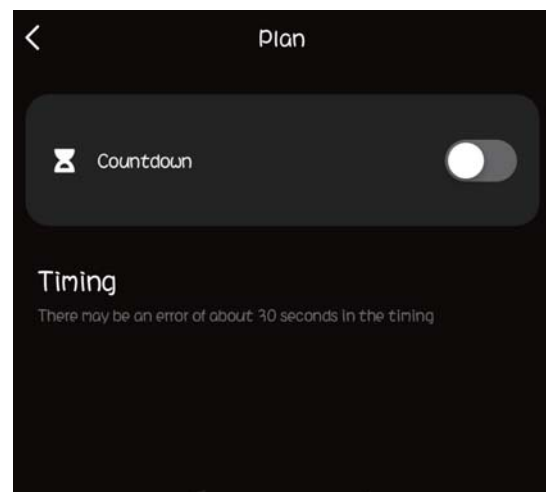
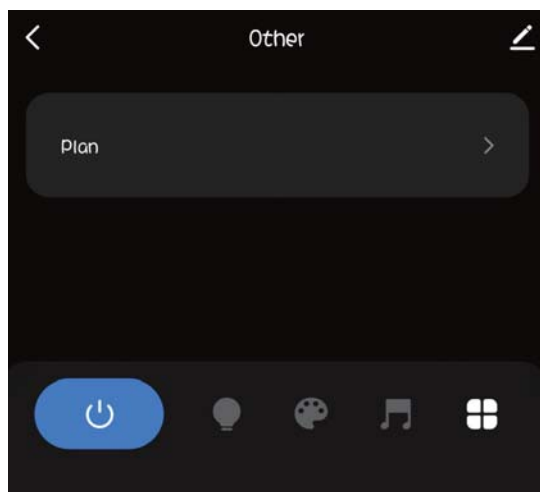
(Figure 1)



(Figure 2)

## (5) Other settings


You can set the timing or countdown for the time and cycle of turning on/off the light;




## 7、Other information

Enter from Edit in the upper right corner of the APP product control interface

<

 Light I



Device Information >

Tap-to-Run and Automation >

Device Review >


Third-party Control


Device Information >


Tap-to-Run and Automation >


Device Review >

Third-party Control


 Alexa

 Google Assistant

 XIAODU

 Tmall Genie

Device Offline Notification

Offline Notification 

Others

Share Device >

Create Group >

FAQ & Feedback >

—————> Can be customized to change the device name

1. Device information:  
Can query product IP address, Mac address, device time zone, signal strength, virtual ID

2. Shared devices  
Configurable to share device control with others

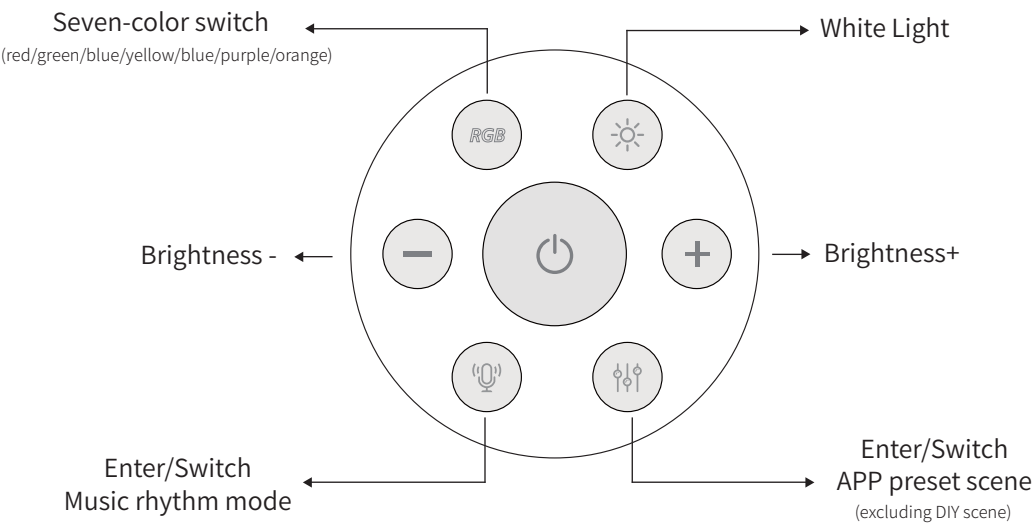
3. Add to Home Screen  
Add a product to your phone's home screen and set up a shortcut icon

4. Equipment upgrade  
When the product updates the software version, the software is upgraded through the mobile phone

5. Remove the device  
When the device is unbound and the cache is cleared, the product restores the initial value, At the same time, the device returns to the network configuration state, and the light flashes rapidly at this time.

9

# 9、Product appearance and key function



## **FCC Statement**

This device complies with part 15 of the FCC Rules. Operation is subject to the following two conditions:

(1) This device may not cause harmful interference, and (2) this device must accept any interference received, including interference that may cause undesired operation.

Any Changes or modifications not expressly approved by the party responsible for compliance could void the user's authority to operate the equipment.

Note: This equipment has been tested and found to comply with the limits for a Class B digital device, pursuant to part 15 of the FCC Rules. These limits are designed to provide reasonable protection against harmful interference in a residential installation. This equipment generates uses and can radiate radio frequency energy and, if not installed and used in accordance with the instructions, may cause harmful interference to radio communications. However, there is no guarantee that interference will not occur in a particular installation. If this equipment does cause harmful interference to radio or television reception, which can be determined by turning the equipment off and on, the user is encouraged to try to correct the interference by one or more of the following measures:

- Reorient or relocate the receiving antenna.
- Increase the separation between the equipment and receiver.
- Connect the equipment into an outlet on a circuit different from that to which the receiver is connected.
- Consult the dealer or an experienced radio/TV technician for help.

This equipment complies with FCC radiation exposure limits set forth for an uncontrolled environment.

This equipment should be installed and operated with minimum distance 20cm between the radiator & your body.