

# Instructions



 Turn power OFF

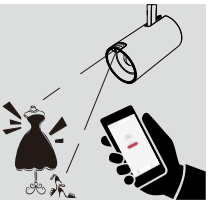


Please follow the sequence of installation step by step. Switch off the electricity before commencing installation



**IP20**

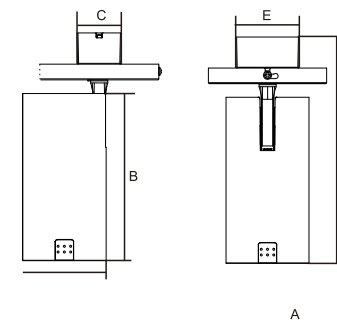
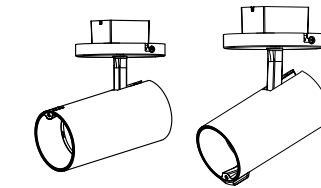
**Ra**  
**>90**

[illegible]

### Size of the luminaires

Unit:mm

Size	15W	20W	30W
A	Ø70	Ø70	Ø80
B	135	135	160
C	43	43	43
D	204	204	226
E	62	62	62

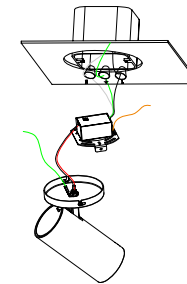


A

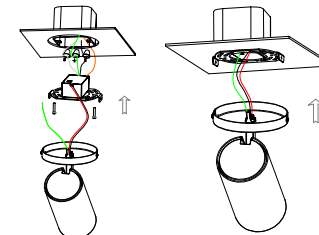
C

D

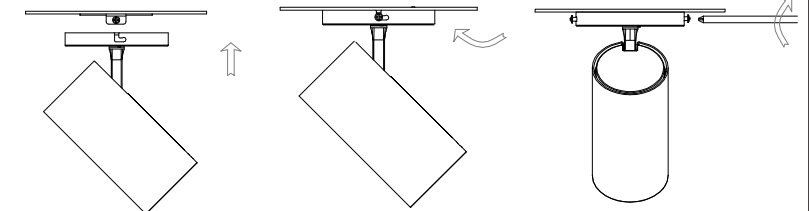
## Installation



C1



C2



C3

Installation instructions:

1. Turn off the power before installation
2. Fix the mounting plate on the mounting box
3. Connect the switching power supply input to the power supply line. White is the live line, black is the neutral line, and yellow green is the ground line.
4. Place the cover on the mounting plate and align the screw holes with the threaded holes on the mounting plate. Secure the lid with screws.
5. Once the assembly is complete, turn on the power to confirm that the fixture is working properly.

Product lifespan refers to lighting time when the luminous flux of 50% luminaires in a batch of the same luminaires reaches 70% of the initial luminous flux(L70B50).. The estimated product lifespan is based on the indoor ambient temperature of 25°C, good air circulation and working at rated voltage.

1. Please be sure to cut off the power before operation.
2. Luminaires must be grounded before use and must be grounded throughout use.
3. Do not continue to use if the luminaire is damaged.
4. Luminaires should not be stored and used in corrosive environments or in environments containing hazardous substances such as sulfide, halides, phthalates, etc.
5. Luminaires should be installed outside the reach of human hands.

**Warning:** The light source and parts of this luminaires are not replaceable. When the light source and parts reach the end of their life, the whole luminaires should be replaced.



D1

D2

D3

## FCC Statement:

This equipment has been tested and found to comply with the limits for a Class B digital device, pursuant to part 15 of the FCC Rules. These limits are designed to provide reasonable protection against harmful interference in a residential installation. This equipment generates, uses and can radiate radio frequency energy and, if not installed and used in accordance with the instructions, may cause harmful interference to radio communications. However, there is no guarantee that interference will not occur in a particular installation. If this equipment does cause harmful interference to radio or television reception, which can be determined by turning the equipment off and on, the user is encouraged to try to correct the interference by one or more of the following measures:

- Reorient or relocate the receiving antenna.
- Increase the separation between the equipment and receiver.
- Connect the equipment into an outlet on a circuit different from that to which the receiver is connected.
- Consult the dealer or an experienced radio/TV technician for help.

Changes or modifications not expressly approved by the party responsible for compliance could void the user's authority to operate the equipment.

This device complies with part 15 of the FCC Rules. Operation is subject to the following two conditions:

- (1) This device may not cause harmful interference, and
- (2) this device must accept any interference received, including interference that may cause undesired operation.

## RF Exposure Statement

The distance between user and products should be no less than 20cm.