

4922005

TIMEC PROCESS TECHNOLOGY APPLICATION CENTRE  
TJ5200W-ASC / BDAC907 - MEZZANINE I/F BOARD  
REV 3.0 0222 ©

MOD LEVEL 12331

Serial No

4922005

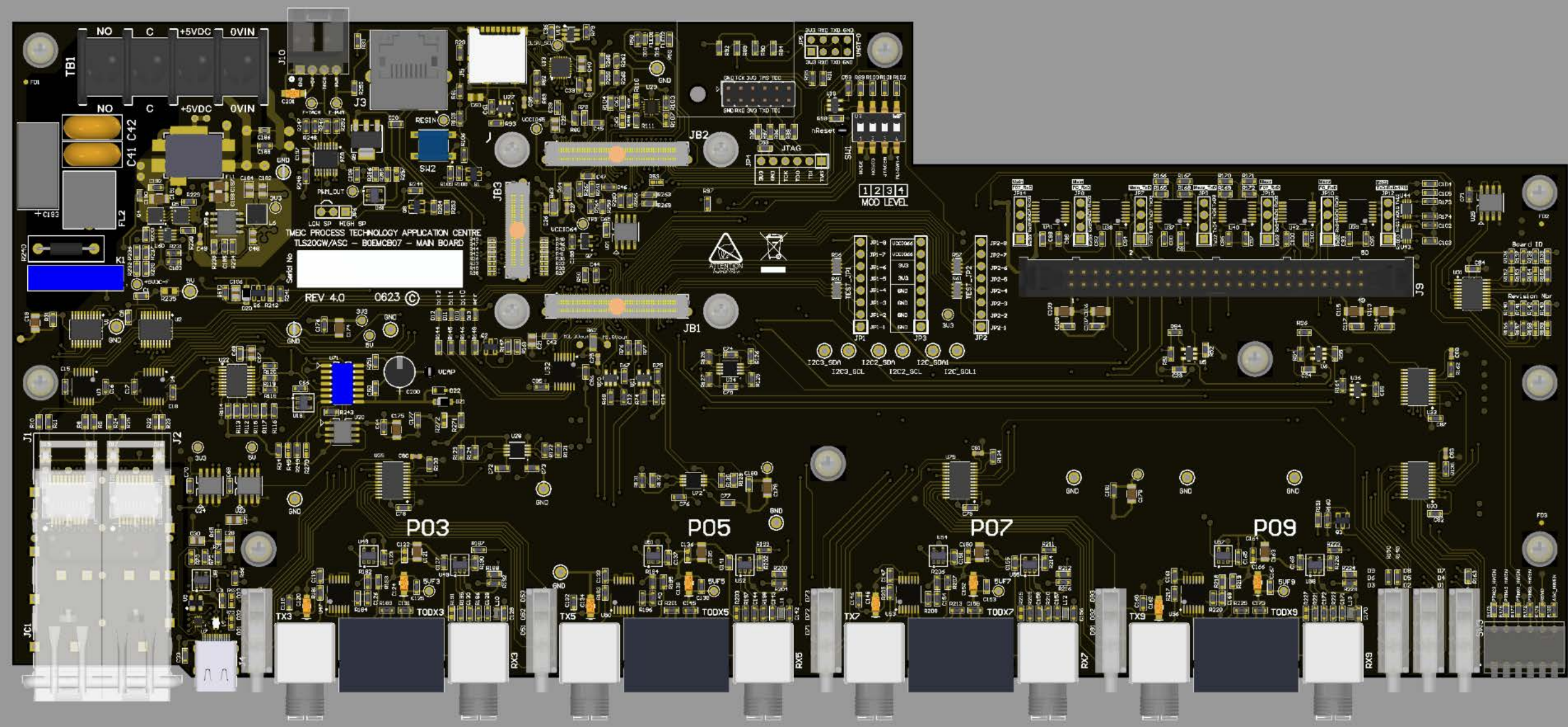
TIMEC PROCESS TECHNOLOGY APPLICATION CENTRE  
TJ5200W-ASC / BDAC907 - MEZZANINE I/F BOARD  
REV 3.0 0222 ©

MOD LEVEL 12331

Serial No

TS304-  
INPUT EV







TMEIC PROCESS TECHNOLOGY APPLICATION CENTRE  
TLS20GW-ASC / BOEMCB07 - MEZZANINE I/F BOARD

REV 4.0

0623 ©

Serial No

MOD LEVEL  
1 2 3 4



P04

P06

P08

P10



F01

R71

C100

C89

R67

C88

GND

U28

C95

R69

R70

SU1

D101

D102

D103

SU1

GND

TX1

PX1

RX2

TX4

PX4

TX6

PX6

TX8

PX8

TX10

PX10

F03

GND

3V3

U29

C91

C92

C93

C94

C95

C96

C97

C98

C99

C100

C101

C102

C103

C104

C105

C106

C107

C108

C109

C110

C111

C112

C113

C114

C115

C116

C117

C118

C119

C120

C121

C122

C123

C124

C125

C126

C127

C128

C129

C130

C131

C132

C133

C134

C135

C136

C137

C138

C139

C140

C141

C142

C143

C144

C145

C146

C147

C148

C149

C150

C151

C152

C153

C154

C155

C156

C157

C158

C159

C160

C161

C162

C163

C164

C165

C166

C167

C168

C169

C170

C171

C172

C173

C174

C175

C176

C177

C178

C179

C180

C181

C182

C183

C184

C185

C186

C187

C188

C189

C190

C191

C192

C193

C194

C195

C196

C197

C198

C199

C200

C201

C202

C203

C204

C205

C206

C207

C208

C209

C210

C211

C212

C213

C214

C215

C216

C217

C218

C219

C220

C221

C222

C223

C224

C225

C226

C227

C228

C229

C230

C231

C232

C233

C234

C235

C236

C237

C238

C239

C240

C241

C242

C243

C244

C245

C246

C247

C248

C249

C250

C251

C252

C253

C254

C255

C256

C257

C258

C259

C260

C261

C262

C263

C264

C265

C266

C267

C268

C269

C270

C271

C272

C273

C274

C275

C276

C277

C278

C279

C280

C281

C282

C283

C284

C285

C286

C287

C288

C289

C290

C291

C292

C293

C294

C295

C296

C297

C298

C299

C300

C301

C302

C303

C304

C305

C306

C307

C308

C309

C310

C311

C312

C313

C314

C315

C316

C317

C318

C319

C320

C321

C322

C323

C324

C325

C326

C327

C328

C329

C330

C331

C332

C333

C334

C335

C336

C337

C338

C339

C340

C341

C342

C343

C344

C345

C346

C347

C348

C349

C350

C351

C352

C353

C354

C355

C356

C357

C358

C359

C360

C361

C362

C363

C364

C365

C366

C367

C368

C369

C370

C371

C372

C373

C374

C375

C376

C377

C378

C379

C380

C381

C382

C383

C384

C385

C386

C387

C388

C389

C390

C391