



Video Call



Support
battery



WiFi



Night vision
full color

HD

Full HD



Voice



One-click photo



Remote
viewing

For instructional videos and FAQ's please visit
icustomerservice.com to learn more.

Distributed by Trend Makers, LLC • Fort Walton Beach, FL 32547

©2024 Trend Makers, LLC

Made in China

All Rights Reserved.



WARNING: Cancer and Reproductive Harm - www.P65Warnings.ca.gov

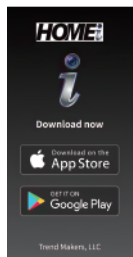
By purchasing this product, you accept Trend Makers' terms and conditions including arbitration agreement.
See enclosed for arbitration agreement. See trendmakersinc.com/arbitration-agreement for details.

i_SDL_IB_ENG_V1_240820



Trend Makers®

3 Simple Steps to Set-Up and Protect



Download the
HOMEi
App



Installation of
doorbells indoors
and outdoors



Connect the doorbell to
the app via quick connect

NOTE: For proper use of the doorbell, follow the following detailed instructions in this manual

Setting Up Your chime

-Demander de l'aide au personnel du service après-vente.
L'équipement est conforme à la norme RSS pour les exemptions de l'obligation d'information.

Innovation, Sciences et Développement économique Canada et aux normes du CNR pour les équipements radio sans licence.
et aux normes CNR pour les équipements radio exempts de licence, l'utilisation est soumise aux deux conditions suivantes aux deux conditions suivantes :

Traduit avec DeepL.com (version gratuite)

- (1) Cet équipement ne doit pas provoquer d'interférences nuisibles.
- (2) Cet équipement doit accepter toute interférence reçue, y compris les y compris les interférences susceptibles de provoquer un fonctionnement indésirable.

Pour le TX : Cet équipement est conforme aux limites d'exposition aux radiations pour les environnements non contrôlés, telles que spécifiées par la FCC/ISED. environnements non contrôlés, telles que spécifiées par la FCC/ISED.
Cet équipement doit être installé et utilisé avec une distance minimale de 20 cm entre le dissipateur de chaleur et l'appareil.
distance minimale de 20 cm entre le dissipateur thermique et le corps.

FCC ID:2A88H-0033052284
HVIN:ISB-09
IC:32423-ISB09

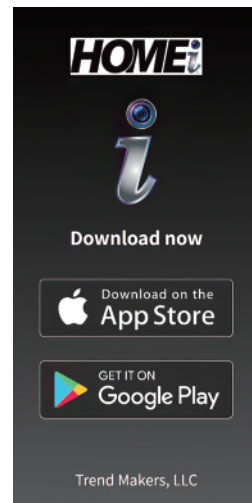
Tout changement ou modification non expressément approuvé par la partie responsable de la conformité peut annuler le droit de l'utilisateur à utiliser le produit. responsable de la conformité peut annuler le droit de l'utilisateur à faire fonctionner l'équipement. l'équipement

Setting Up Your chime

Step 1: Download the HOMEi App

1. Download the **HOMEi** app in the Apple® App Store, Google® Play Store, or use your phone camera to scan the QR code below to open the app store of your mobile phone.

Apple® App Store or
Google® Play Store



Scan Code



Setting Up Your chime

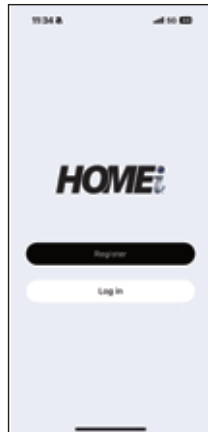
Step 1: Download the HOMEi App

1. In order for your chime to work properly, select **Allow** if you see the prompt:
HOMEi would like to find and connect to devices on your local network.
2. Create your account and select **Continue**.
3. Follow the App prompts to set up your password and register your camera/device. Then **Log In** to your **HOMEi** app.

Passwords must contain numbers and letters, be no less than six digits, and cannot contain special characters.

FORGOT PASSWORD:
In the App click on "Forgot Password" and follow the account retrieval process. You will receive an email with a temporary code. Enter the temporary code. You will receive a second email with your password.

Warning: Changes or modifications to this unit not expressly approved by the party responsible for compliance could void the user's authority to operate the equipment.



Setting Up Your chime

FCC ID:2A88H-0033052284
HVIN:ISB-09
IC:32423-ISB09

Any Changes or Modifications not expressly approved by the party responsible for compliance could void the user's authority to operate the equipment

Cet appareil est conforme à la partie 15 des règles de la Fcc. est soumis aux deux conditions suivantes :

- (1) Cet équipement ne doit pas causer d'interférences nuisibles.
- (2) Cet équipement doit accepter toute interférence reçue, y compris les interférences susceptibles de provoquer un fonctionnement indésirable.

REMARQUE : Cet équipement est conforme aux limites imposées aux appareils numériques de classe B. Il est destiné à fournir une protection raisonnable pour les installations résidentielles contre les interférences nuisibles. Cet appareil peut émettre de l'énergie radioélectrique et, s'il n'est pas installé et, s'il n'est pas installé et utilisé conformément aux instructions, il peut causer des interférences nuisibles aux communications radio. peut provoquer des interférences nuisibles aux communications radio. Cependant, il n'y a aucune garantie que des interférences ne se produiront pas dans une installation particulière. Toutefois, il n'est pas garanti qu'il n'y aura pas d'interférences dans une installation particulière. Si cela se produit, il est recommandé à l'utilisateur d'essayer de corriger le problème. Si des interférences se produisent, il est recommandé à l'utilisateur d'essayer de les corriger en procédant comme suit en procédant comme suit :

-Réorienter ou déplacer l'antenne de réception. Réorienter ou déplacer l'antenne de réception.

-Augmenter la distance entre l'équipement et le récepteur.

-Brancher l'équipement à une prise de courant sur un circuit différent de celui sur lequel le récepteur est branché. brancher l'appareil sur un circuit différent de celui sur lequel le récepteur est branché.

Setting Up Your chime

This device complies with part 15 of the FCC Rules. Operation of the equipment is subject to the following two conditions:

- (1) This equipment must not cause harmful interference.
- (2) This equipment must accept any interference received, including interference that may cause undesired operation.

NOTE: This equipment meets the limits for a Class B digital device, intended to provide reasonable protection for residential installations, against harmful interference. This equipment may radiate radio frequency energy and, if not installed and used in accordance with the instructions, may cause harmful interference to radio communications. However, there is no guarantee that interference will not occur in a particular installation. If it does occur, it is recommended that the user attempt to correct the interference by doing the following:

- Reorienting or moving the receiving antenna.
- Increasing the separation between the equipment and the receiver.
- Connect the equipment to an outlet on a circuit different from that to which the receiver is connected.
- Seeking assistance from after-sales personnel.

The equipment complies with the RSS standard for exemptions from Innovation, Science and Economic Development Canada and the license-free CNR standards for radio equipment, operation is subject to the following two conditions:

- (1) This equipment must not cause harmful interference.
- (2) This equipment must accept any interference received, including interference that may cause undesired operation.

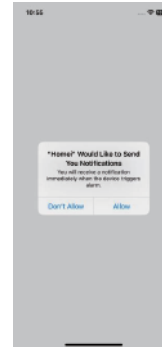
For TX: This equipment complies with the radiation exposure limits for uncontrolled environments as specified by the FCC/ISED.

This equipment should be installed and operated with a minimum distance of 20cm between the heat sink and the body.

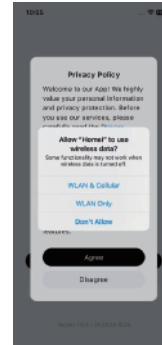
Setting Up Your chime

Step 1: Download the iHome i app and complete the preparations

- 1.1: After the download is completed, in order to ensure that your device and APP work properly, please press the following steps
- 1.2: Please choose to allow Home i to send you notifications, after binding the device, that is, the APP can receive real-time alarm notifications sent to you by your device.



- 1.3: Please select to allow Home i to use the wireless LAN as well as the data network

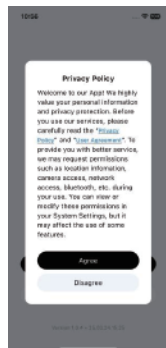


Setting Up Your chime

1.4: Please select Allow Home i to find devices on the local network



1.5: Finally, select Agree to Privacy Statement to go to the Create Account/Login page



Setting Up Your chime

- 3: Battery duration is calculated according to the scenario of waking up and working 30 times a day, and the battery capacity is 4000MA. 4000MA capacity battery can be used for more than 20-30 days on a single charge. Charge the device when the power reaches 30% or below, you need to choose 5V2A adapter for charging, 4-5 hours can be full.
- 4: Regularly check whether the firmware of the doorbell is updated to ensure that the doorbell works properly and the safety is guaranteed. security, regularly clean the shell of the doorbell, especially the camera part, to prevent Dust, rain erosion caused by the product can not be used normally
- 5: The whole package comes with a mounting bracket for the doorbell camera, use the expansion screws package that comes with it to fix the doorbell bracket to the right place. The doorbell bracket is fixed in a suitable position first, then the doorbell can be hung on the bracket. Finish the installation
- 6: Interpretation of Doorbell Status Indicators
 - 6.1 Status light is off: the device is not powered on/sleeping.
 - 6.2 Red light blinking: pending network mode
 - 6.3 Blue light blinking: device wake-up process
 - 6.4 Blue light is always on: the device has been successfully connected to the network and is in normal operation/afterfull charging
 - 6.5 Red and blue light blinking: the first time power on
 - 6.6 Red and blue lights are always on: the device is charging / the device is in video call



Setting Up Your chime



High definition movie

Doorbell buttons

Notes:

- 1: Low-power doorbells use wireless signals to communicate and are subject to environmental interference. When installing , make sure that the signal coverage is good and that the device is in an environment with good network conditions. Avoid connecting to the Dingtone receiver if the distance between the doorbell camera and the Dingtone receiver is too far or if the connection is abnormal due to the isolation of the walls and obstacles by the . As the doorbell camera needs to be installed in outdoor environments, the doorbell is not highly waterproof and needs to be avoided. Doorbells are not waterproof and should not be used in harsh environments such as those found at.
- 2: Doorbell cameras need to be connected to a better network environment to avoid abnormal use, doorbells in the Doorbell can be used normally within 80 meters in an open and good non-interference environment,and the connection distance between the doorbell and theThe connection distance between doorbell and Dingtone can be up to 50 meters in an open, good and non-interference environment.The actual distance should be decided according to the specific installation scenario.

Setting Up Your chime

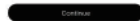
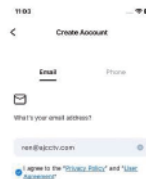
Step 2: Create user account (mailbox creation and cell phone number creation are the same steps)

2.1: Click on Create Account and select your country and click Continue, You will find two ways to create an account

1: Mailbox creation 2: Mobile phone number creation

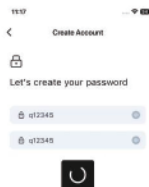


2.2: Select the mailbox to create an account, enter your email address and agree (Privacy Policy and User Agreement), go to your mailbox to find the verification code and enter the dialog box,enter the correct password and log in to the account jump to enter your name!



Setting Up Your chime

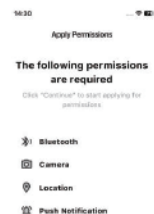
2.3: The password contains at least one letter, both upper and lower case, and at least one number. Password characters are at least 6 digits long.



Done

2.4: The following permissions are required for the APP to run, please select Allow for all of them

2.5: Bluetooth Permission, Camera Permission, Location Permission, Push Permission.



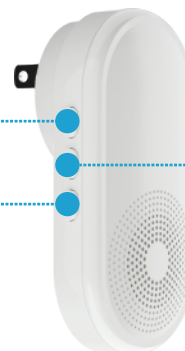
Continue

Setting Up Your chime

1.2: The receiver will emit ding dong ding dong sound after being connected to the power supply with a green light blinking, long press the receiver volume key or the down key until The receiver will blink and make a 'ding' sound, complete the code clearing and enter pairing mode, the transmitter and receiver before the pairing code will be cleared, at this time, when pressing the transmitter's button, it will be automatically paired with the receiver, pairing is successful the receiver will make two ding ding ding sounds, at this moment that represents the pairing is successful.

down button

volume key



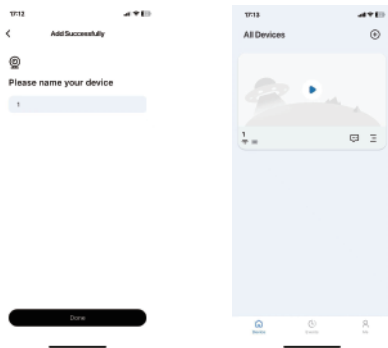
upper key

1.3: Volume Adjustment: Press the volume button of receiver to cycle the volume, and then press the volume button to adjust the volume. Volume adjustment: short press the volume button on the receiver to cycle the volume, a total of 5 levels of cycle

1.4: Select when in pairing mode (as explained in 1.2 above), press the receiver up and down buttons, you can freely choose different ringtones (55 ringtones), the user can select the ringtone that you like, then press the button of the doorbell camera for pairing, the pairing is successful, press the button of the doorbell camera, the device will emit the ringtone that the user selects for playback

Setting Up Your chime

- 1.3: Enter the corresponding 2.4GWIFI account and password click on the next step to enter the network countdown, and the device will emit a tone after the success of the jump to the device naming page to enter the name of the device indicator shows that the device indicator for the blue light is always on, device can be used



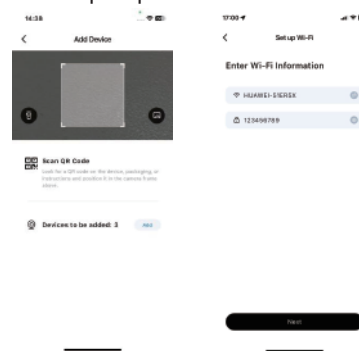
How to install your doorbell camera with a Dingtone receiver and connect to use it

- 1.1: The doorbell camera has been successfully paired with the network, the blue light is always on, the dingdong receiver will be connected to the 100-220V (wide voltage) AC voltage, the power supply will be accompanied by ding dong two sound beeps, at this time, both devices are in the state of being able to be connected to the network

Setting Up Your chime

Pre-requisite for distribution network connection: Doorbell camera fluctuates the power on button, the device will emit a power on tone and the indicator light shows a red light flashing continuously, the receiver needs to be connected to the 100-220V (wide voltage) AC voltage, power-up accompanied by two ting ting The two devices are in the state of network connection at this time.

- 1.1.: The doorbell camera needs to have been in the mode that can be assigned to the network (such as the above pre-conditions)
1.2.: Click Add Device, scan the QR code and select Next according to the prompts.



- 1.3.: Select the single 2.4G WIFI signal and enter the correct password, and then scan the QR code generated by your cell phone against the camera lens. QR code to the lens of the camera to scan.

Setting Up Your chime



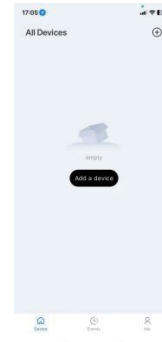
1.4.: When you hear the ding ding ding ding tone from the device you can click next, enter into the reading stage, when you hear the beep of the device is connecting, the APP will jump to the device naming page, enter the name of the device to use the camera



Setting Up Your chime

Bluetooth connectivity:

1.1: Connect your mobile phone to 2.4GWIFI and open the Bluetooth search button, click on the home page to add the device or the plus sign in the upper right corner to enter the device allocation web page



1.2: Confirm the QR code on the body of the ajaxx*****3e77 serial number of the device, in the allocation page to select the corresponding ID number and click on Add.

