

## ZIGBEE



### PRODUCT DESCRIPTION

1. ZigBee wireless switches can only be paired with ZigBee Tuya gateways (the gateway needs to be purchased separately).
2. When configuring the network, please be close to the gateway to quickly connect to the network.
3. When the power is turned off or the gateway is removed, the product needs to consume power because it is always looking for the gateway signal. It is recommended to remove the battery to save energy.
4. This product uses CR2032 battery (battery not included, need to purchase additionally)

### PLACEMENT



place the desktop



Hanging on the wall

### OPERATION GESTURE

Requires in-app settings



**Note:** In the long press gesture mode, the indicator light flashes once to let go, otherwise it is easy to clear the signal.

### NETWORK PAIRING AND DEVICE PAIRING

1. Make sure your mobile WiFi is turned on.



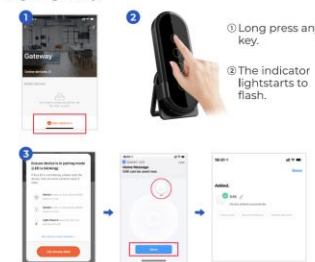
2. Open your Tuya APP, Connect to the ZigBee gateway, and make sure that the connection is 2.4GHz.



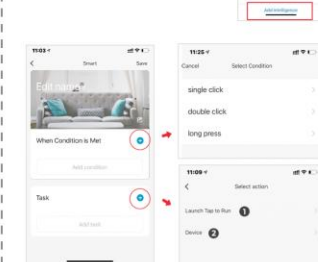
Click on the top right corner. Choose wired gateway or wireless gateway according to your own gateway.



3. Add the ZigBee wireless switch as a sub-device in the ZigBee gateway.



4. Add a ZigBee or WiFi device to the ZigBee wireless switch, and it can be controlled remotely after successful pairing. Each key can be set independently. There are 4 buttons.



### Launch Tap to Run



**Note:** One-key switch inversion, only supports on and off functions, and does not support other functions.

### Device



Choose a device to pair. Select the function to be set.

### THE BOX CONTAINS

- 1 ZigBee Wireless switch
- 1 Stand
- 1 Manual
- 2 Screw
- 1 Box

## ZigBee智能遥控器



### 产品说明

1. ZigBee智能遥控器只能与 ZigBee 涂鸦网关配对 (网关需要单独购买)。
2. 配网时候, 请靠近网关, 以便快速连接网络。
3. 当断电或者移走网关后, 该产品由于一直查找网关信号, 需耗费电量, 建议取出电池以节约能量。
4. 本产品使用CR2032电池 (不含电池, 需要单独购买)

### 摆放方式



摆桌子上



挂在墙壁上

### 操作手势

需要在 APP 内设置



**注意:** 在长按手势模式下, 指示灯闪烁一次即可松手, 否则容易清除信号。

### 网络配对与设备配对

1. 确保您的手机 WiFi 已打开。



2. 打开您的 Tuya APP, 连接到 ZigBee 网关, 并确保连接的是 2.4GHz。



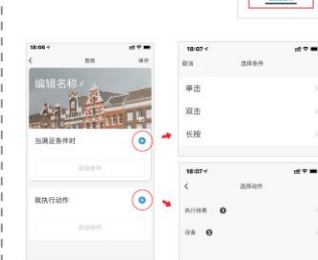
点击右上角。根据自己的 ZigBee 网关选择有线网关或无线网关。



3. 在 ZigBee 网关中添加 ZigBee 智能遥控器作为子设备。



3. 在 ZigBee 智能遥控器内添加 ZigBee 或 WiFi 设备, 配对成功后即可远程控制。每个按键都可以独立设置, 有 4 个按键。



### 执行场景



**注意:** 一键开关反转, 只支持开启和关闭功能, 不支持其他功能。

### 设备



选择要配对的设备。选择要设置的功能。

### 包装清单

- 1 x ZigBee 智能遥控器
- 1 x 支架
- 1 x 说明书
- 2 x 螺丝
- 1 x 彩盒

This device complies with part 15 of the FCC Rules. Operation is subject to the following two conditions: (1) This device may not cause harmful interference, and (2) this device must accept any interference received, including interference that may cause undesired operation.

Any Changes or modifications not expressly approved by the party responsible for compliance could void the user's authority to operate the equipment.

**Note:** This equipment has been tested and found to comply with the limits for a Class B digital device, pursuant to part 15 of the FCC Rules. These limits are designed to provide reasonable protection against harmful interference in a residential installation. This equipment generates uses and can radiate radio frequency energy and, if not installed and used in accordance with the instructions, may cause harmful interference to radio communications. However, there is no guarantee that interference will not occur in a particular installation. If this equipment does cause harmful interference to radio or television reception, which can be determined by turning the equipment off and on, the user is encouraged to try to correct the interference by one or more of the following measures:

- Reorient or relocate the receiving antenna.
- Increase the separation between the equipment and receiver.
- Connect the equipment into an outlet on a circuit different from that to which the receiver is connected.
- Consult the dealer or an experienced radio/TV technician for help.
- RF warning for Portable device: The device has been evaluated to meet general RF exposure requirement. The device can be used in portable exposure condition without restriction.