

Zigbee Rainwater Water Leakage Sensor



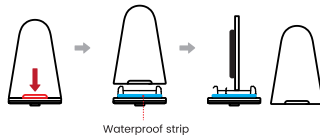
SMS134

Product Parameters

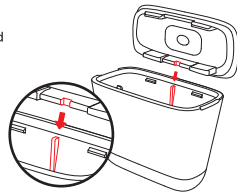
Operating Voltage: DC 3V
Battery Type: CR2450
Standby Power Consumption: 10~15μA
Transmission Power Consumption: ~80mA
Communication Protocol: Zigbee 3.0
Waterproof Rating: IP67
Communication Range: 1000–3000cm(Unobstructed)
App: Smart Life / Tuya
Size: 4.5*4.1*2.5cm

How to Replace the Battery

Ensure the waterproof strip is properly installed to guarantee waterproof performance.



Please align with the red latch and press firmly until it is securely installed.



1. Leak Prevention Area

Near water accumulation and leakage areas.



2. Stick to the Wall

Stick in a place exposed to rainwater.



Frontal installation
Slow runoff of rainwater



Angled installation
Rapid runoff of rainwater

Connect Network

1. Download "Smart Life" from the App Center or by scanning the QR code.
2. Turn on WiFi and Bluetooth.
3. Connect to the 2.4 GHz network.



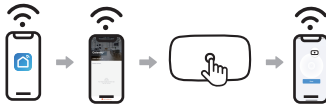
Link to Tuya Zigbee Gateway

The premise needs to buy the Zigbee gateway.

Zigbee devices require a Zigbee gateway to enable remote control and management via an app.



1. Add Zigbee devices to the Zigbee gateway.
2. Long press the pairing button until the indicator LED blinks quickly, then release.
3. Gateway searches for sub-devices, click to add.



Repair and Replacement Service

1. This product comes with a one-year warranty from the date of purchase.
2. If you encounter any issues during use or have valuable suggestions, please feel free to contact us at any time. For all quality-related problems, we offer replacement or refund services.
3. Please note: Damages caused by human misuse are not covered under this warranty and are not eligible for replacement or refund.

Regulatory Certification

FC CE RoHS



Made in China

FCC Warning:

This equipment has been tested and found to comply with the limits for a Class B digital device, pursuant to part 15 of the FCC Rules. These limits are designed to provide reasonable protection against harmful interference in a residential installation. This equipment generates, uses and can radiate radio frequency energy and, if not installed and used in accordance with the instructions, may cause harmful interference to radio communications. However, there is no guarantee that interference will not occur in a particular installation. If this equipment does cause harmful interference to radio or television reception, which can be determined by turning the equipment off and on, the user is encouraged to try to correct the interference by one or more of the following measures:

- Reorient or relocate the receiving antenna.
- Increase the separation between the equipment and receiver.
- Connect the equipment into an outlet on a circuit different from that to which the receiver is connected.
- Consult the dealer or an experienced radio/TV technician for help.

Caution: Any changes or modifications to this device not explicitly approved by manufacturer could void your authority to operate this equipment.

This device complies with part 15 of the FCC Rules. Operation is subject to the following two conditions:

(1) This device may not cause harmful interference, and (2) this device must accept any interference received, including interference that may cause undesired operation.

This equipment complies with FCC radiation exposure limits set forth for an uncontrolled environment. This equipment should be installed and operated with minimum distance 20cm between the radiator and your body.