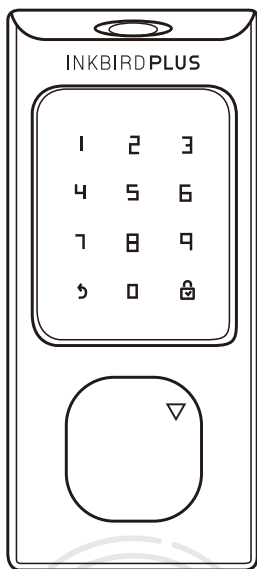


尺寸：80mmX145mm

类型：骑马订

材质：50G书纸

INKBIRD**PLUS**



INKBIRDPLUS BLUETOOTH SMART DOOR LOCK

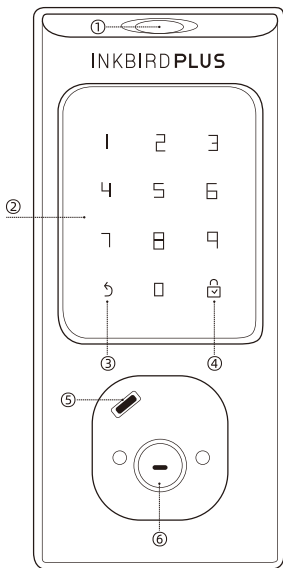
U S E R M A N U A L

CONTENT

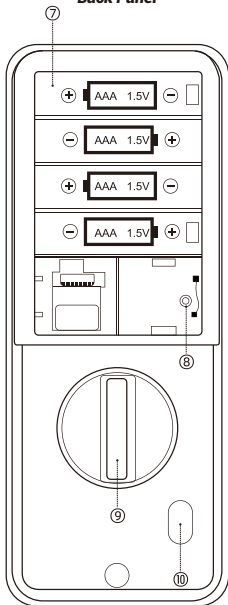
01 Product Introduction	1
02 Package Introduction	2
03 Installation Manual	3
1. Check Door Dimensions	3
2. Installation Steps	3-6
04 APP Operation	7
1. Download and Install the INKBIRD App	7
2. How to Connect to INKBIRD App	7-11
3. How to Add Fingerprints, Passwords, and IC Cards	2-31
4. Optional functions	32-49
05 Device Operation	50
How to Finish the Settings without APP	
1. How to Add Fingerprints, Passwords, and IC Cards	50
2. Optional Functions	50
06 Technical Parameters	51
07 FCC Requirement	52

Product Introduction

Front Panel

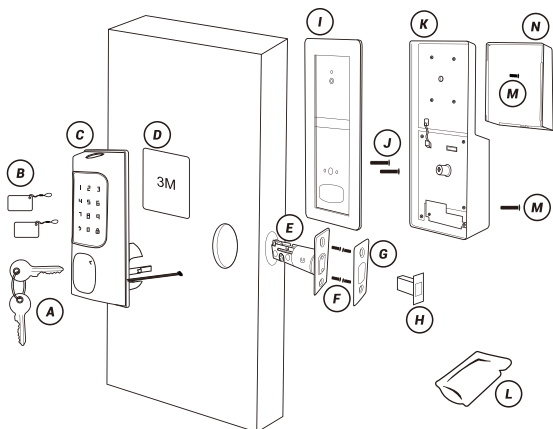


Back Panel



- ① Fingerprint Sensor
- ② Keyboard/Card Sensor
- ③ Close/Return/Doorbell
- ④ Confirm
- ⑤ Type-C USB Port
- ⑥ Keyhole
- ⑦ Battery Groove
- ⑧ Reset Button
- ⑨ Thumb Turn:Manually ON/OFF
- ⑩ Quick Open/Close

Package Introduction



Part	Description	Quantity
A	Key	2
B	IC Card	2
C	Front Panel	1
D	3M Sticker	1
E	Latch	1
F	Wood Screw Set	1
G	Strike Plate	1
H	Plastic Lock Groove	1
I	Mounting Plate	1
J	Long Screw Set	1
K	Back Panel	1
L	Spare Screw Set	1
M	Long & Short Screw Set	1
N	Battery Cover	1

Installation Manual

Note: Install and test the lock with the door open to avoid being locked out.

Tools Needed

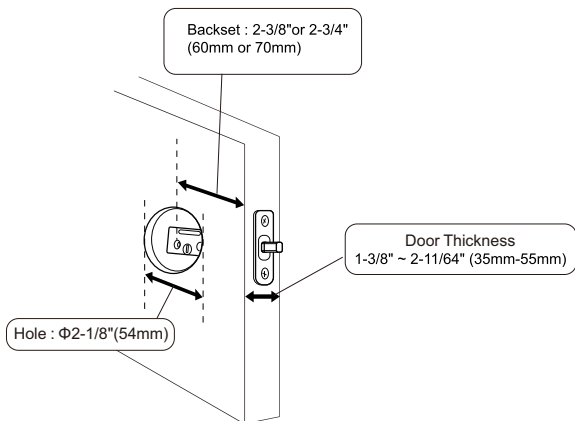
Screwdriver; Tape Measure; Pencil; Other Chiseling Tools; Size Reference Card.

1. Check Door Dimensions

1) Backset Determination

Backset is a distance from door edge to center of hole on door face.

Backset can be 2-3/8" or 2-3/4" (60mm or 70mm).



2) Hole Diameter

Using the marks as guide to drill holes Φ 3/8\" (10mm)

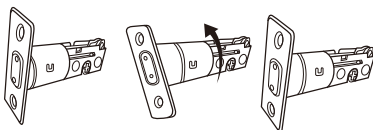
----Fasten Smart door lock (Optional) Hole : Φ 2-1/8\" (54mm)

3) Door Thickness

The door thickness between 1-3/8\" and 2-11/64\" (35mm-55mm) are all suitable for the keypad deadbolt handle set.

2. Installation Steps

1) Adjust Latch Length



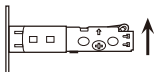
Note: When performing this operation, please take protective measures and be careful of the metal edge not to injure yourself.

Hold the right part of the lock tongue with your right hand and turn the left iron piece counterclockwise (about 15 degrees) with your left hand.

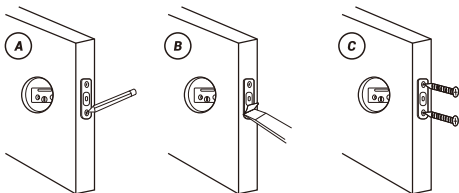
When the rectangular position of the 2-3/8" (60mm) tick mark changes from convex to concave (as shown), slowly extend the locking latch, and then turn clockwise the inside of the locking latch back to the rectangular position of 2-3/4" (70mm) scale.

2) Install Latch

Note: Need to keep this way up when inserting the latch.



Insert the latch and ensure it is parallel to the door face.

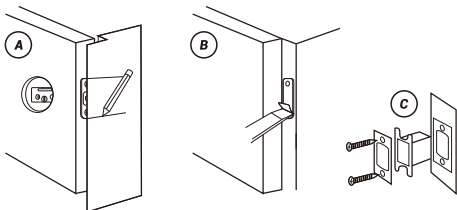


A. Mark the outline of the plate, then take out the latch.

B. Chisel 1mm-2mm deep along the outline to allow the plate to be aligned with the door edge.

C. Insert the latch into the door, use 2 F : Wood Screw Set to secure latch.

3) Install Strike Plate



A. Identify the center of the plate: Close the door to lay the latch bolt against the door frame. Mark the outline of the plate onto the door jamb.

B. Drill 25mm deep at the intersection of the horizontal and vertical lines of the plate. Chisel 1mm-2mm deep along the strike plate outline to allow the strike plate to be aligned with the door frame.

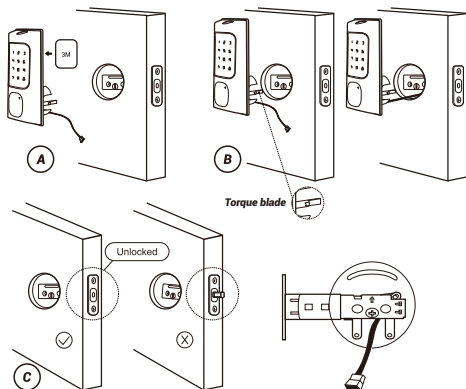
C. Insert the plastic lock groove and the strike plate into the doorjamb and tighten with F : Wood Screw Set.

4) Install Front Panel

A.If you want to secure the door lock, please stick the 3M stickers on the front panel. (Optional)

B.Let the cable and the [torque blade] go through the holes on the latch, as in the picture.

C.IMPORTANT: Latch must be in unlock position, and place the cable under the latch.



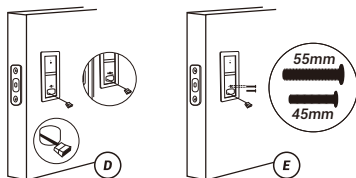
D.Pass the Cable and the [torque blade] to mounting plate as in the picture.

E.Use the 2 long screws to attach the mounting plate to the front panel.

Notes:

The long screw set has two sizes of screws, one for door thickness

1-3/4" (45mm) — M:Long & Short Screw Set and the longest screws fit for 2.17" (55mm) — J:Long Screw Set .

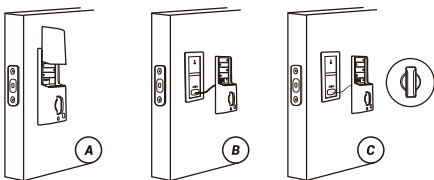


5) Install Back Panel

A.Remove the battery cover and back cover (use the sharp object to push the back cover up first)

B.Connect the cable and ensure a tight cable connection.

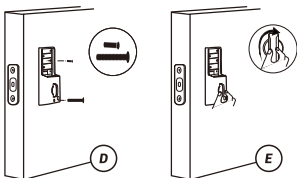
C.Rotate the Thumb turn in a vertical position and insert the [torque blade] into the interior assembly lock switch.



D. Use a short screw to tighten the inner battery groove on the back panel, then use a long screw to attach the back panel to the door
M: Long & Short Screw Set.

E. After installing the back panel, rotate the thumb turn to test if it works with the latch.

If that doesn't work, take out the back panel and turn the torque blade around 90 degrees and try to install it again until it works with the latch.

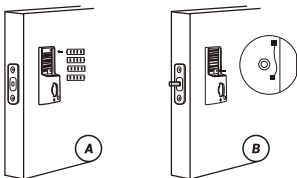


6) Insert Battery and Install Back Battery Cover

A. While the door is open and unlocked, insert 4 (AA) 1.5V Alkaline batteries into the back panel.

B. Press and hold the reset button on the back panel.

C. Keep holding the reset button until you hear "Factory reset successfully". The lock will automatically go into the locked position. This is to let the smart lock memorize the orientation of the door.



Notes:

A. Alkaline batteries are recommended to stabilize the power supply. If you don't use alkaline, battery performance will be reduced greatly.

B. All settings will be saved even if all batteries are completely discharged. Having a Type-C USB port can power the lock and activate the keyboard.

APP Operation

Preparations

- 1) Complete the hardware installation.
- 2) Install 4 AAA batteries.

(After the first hardware installation, be sure to restore the factory settings) Press and hold the reset button in the lower right corner of the battery compartment for 5 seconds.

Note: Wave up the keyboard, please touch and hold the keyboard for 2 seconds.

1. Download and Install the INKBIRD App

- 1) Search "INKBIRD" in App store or Google Play, or scan the following QR code to download and install the APP, or update it to the latest version.



Scan QR code to download
INKBIRD APP

Note:

1. Your iOS devices must be running iOS 11 or above to download the app smoothly.
 2. Your Android devices must be running Android 7.1 or above to download the app smoothly.
- 2) Registration
 - a. Open the app, select your Country/Region, enter your email address, and a verification code will be sent to you.
 - b. Enter the verification code to confirm your identity, and the registration is complete.
 - c. Registering an account is necessary before using the INKBIRD app for the first time.

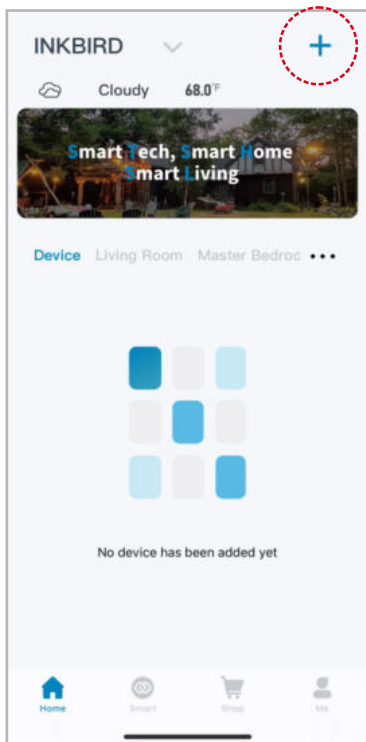
2. How to Connect to INKBIRD App

Step1: Turn on the Bluetooth and location on your smartphone.

Step2: Open the app and click the "+" in the upper right corner to add the device.


Step3: Wake the lock, press "1" and then "🔗" to enter Bluetooth pairing.

(Operation timeout: 60 seconds)







Press the 1 key, then immediately press the  key to enter Bluetooth pairing.

Next



Device is pairing

Cancel 88 s

3.How to Add Fingerprints, Passwords, and IC Cards

Notes:

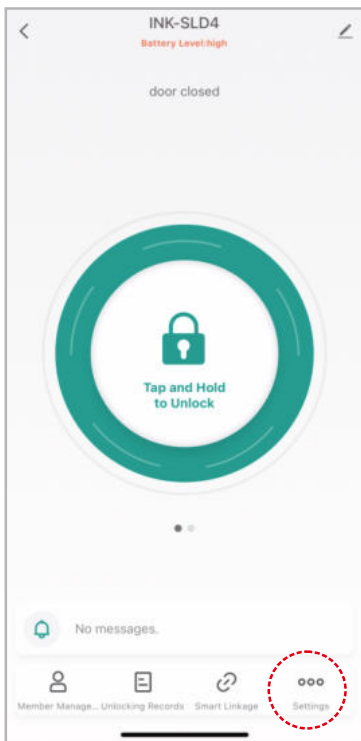
- a) Fingerprint, passwords, and IC cards can all be administrators.**
- b) When entering a password or card in the app, if there is no fingerprint, password, or card at the lock end, the password or card must be under administration authority.**

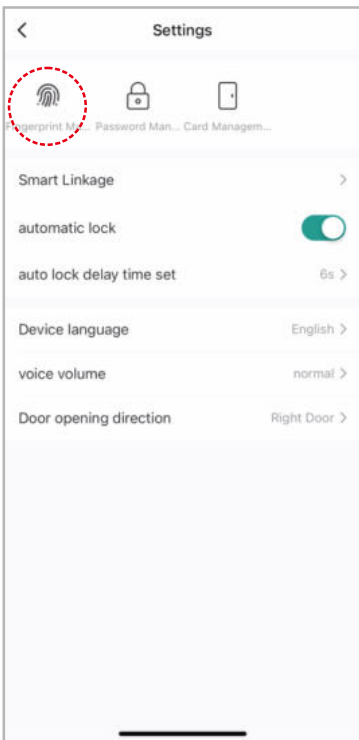
1) How to Add Fingerprints

Step1: Go to settings to enter fingerprint management, then click "Add Fingerprints" to choose a member to capture his fingerprint.

Step2: Click "Start Capturing" and put your finger on the fingerprint recognition area of the lock and hold for more than 5 seconds as prompted by the app. Each fingerprint needs to be collected three times. For the integrity of the fingerprint, a different part of the fingerprint should be captured each time.

Note that the first fingerprint of the administrator cannot be deleted. All fingerprints under administrator authority can be used to verify administrator identity.







Fingerprint Management



No Fingerprint records.

Add Fingerprint



Fingerprint Management

Select User

Administrators can set Fingerprint for themselves or other users. Select the user for whom you want to set Fingerprint.

Family Member



INKBIRDPLUS

xxx@ink-bird.com

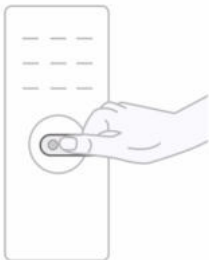


Cancel

Add Fingerprint

How to Capture Fingerprint

First, follow the instructions to locate the fingerprint recognition area of the lock. Then, place the same finger on the fingerprint recognition area several times. Hold the same position for more than 5 seconds each time.



Start Capturing

Cancel

Add Fingerprint



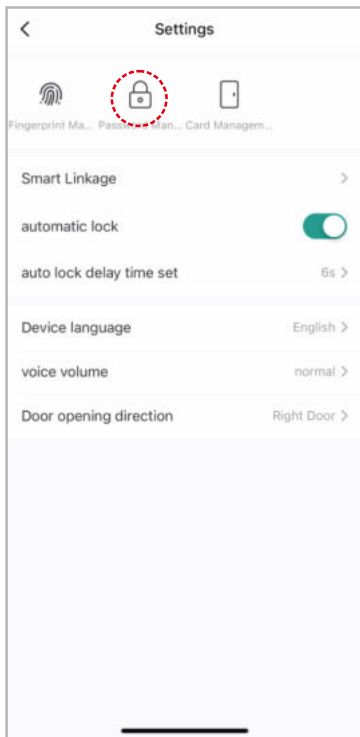
0/3

Place your finger on the fingerprint recognition area of the lock and remove it when prompted. Repeat this procedure several times.

2) How to Add Passwords

Step1: Go to settings to enter password management, then click "Add Password" to choose a member.

Step2: Enter a 6-digit password or generate a random password, then enter the password name and save.





Password Management



No Password records.

Add Password



Password Management

Select User

Administrators can set Password for themselves or other users.
Select the user for whom you want to set Password.

Family Member



INKBIRDPLUS

xxx@ink-bird.com





Add Password

Save

Create Password

Save the password immediately. The password is not displayed in the app.

Please enter a valid password

Generate Randomly

Copy

Password Name

Enter

Duress Password

Once enabled, a duress alert is triggered if the door is unlocked with Password.

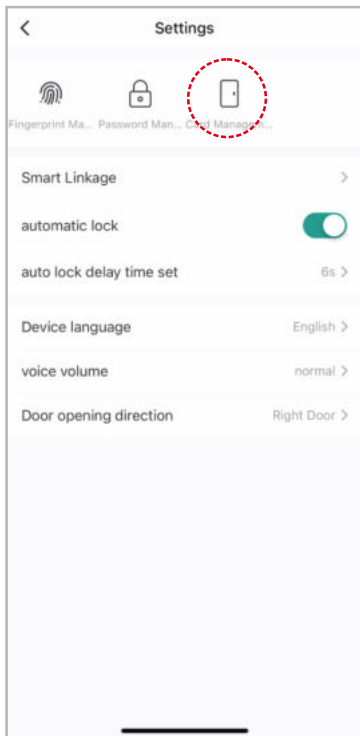


3) How to Add IC Cards

Step1: Go to settings to enter card management, then click "Add Card" to choose a member.

Step2: Click "Start Capturing" and put the card on the card-sensing area of the lock until you hear a sound indicating success.

Step3: Enter a card name and complete the input.





Card Management



No Card records.

Add Card



Card Management

Select User

Administrators can set Card for themselves or other users.
Select the user for whom you want to set Card.

Family Member



INKBIRDPLUS

xxx@ink-bird.com

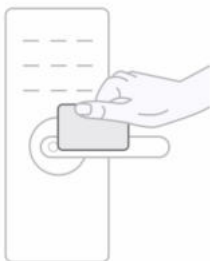


Cancel

Add Card

How to Capture Card

Place the card on the recognition area as shown in the figure in 27 seconds. The card is activated if the indicator blinks green twice and you hear a long sound. The activation fails if the indicator blinks red. In this case, please try again.



Start Capturing

Cancel

Add Card

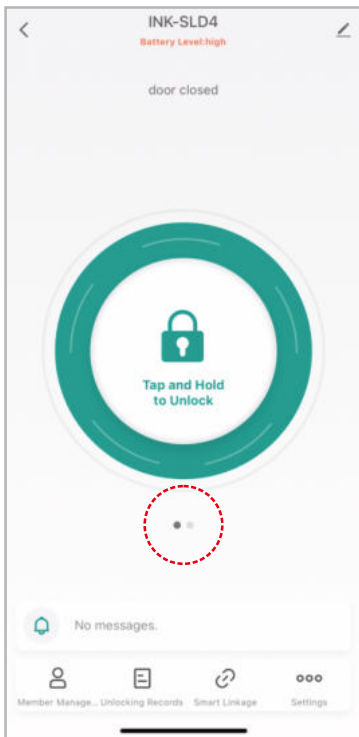
Activating

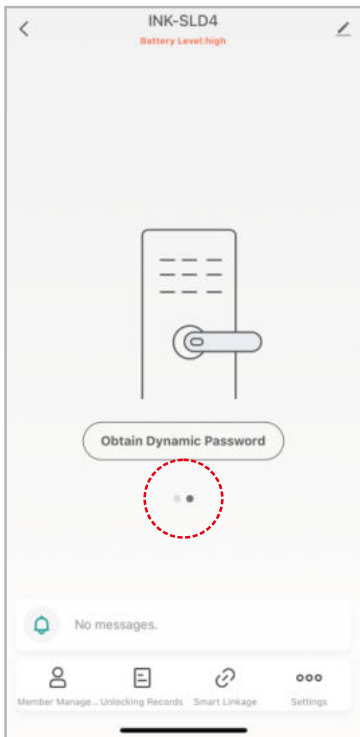
Keep the card close to the recognition area.



4) How to Obtain Dynamic Password

Swipe left on the main interface and click "Obtain Dynamic Password" to generate a password. (Dynamic Password Validity Period: 5 minutes)







INK-SLD4

Battery Level: high



82719150

The dynamic password expires after 5 minutes.

Copy Password



No messages.



Member Manage ..



Unlocking Records



Smart Linkage

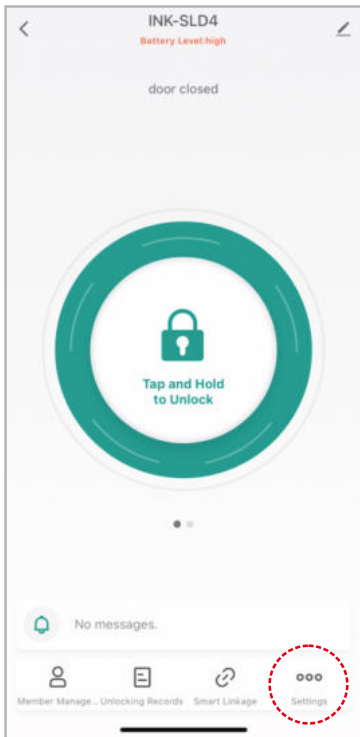


Settings

4.Optional functions

(1) Change The Voice Volume

Enter "Settings" to set the voice volume, then click "OK" to save your setting.





Settings



Fingerprint Ma...



Password Man...



Card Managem...

Smart Linkage



automatic lock



auto lock delay time set

6s >

Device language

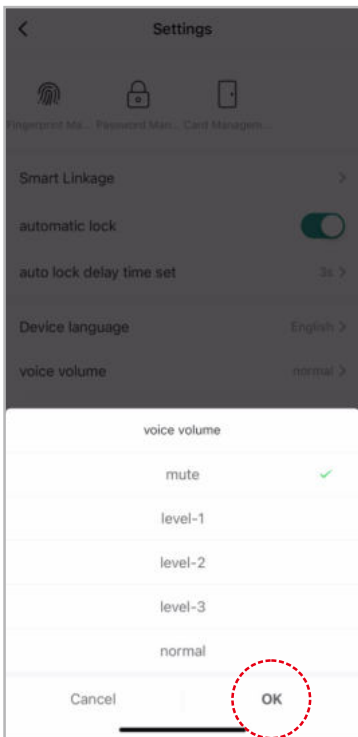
English >

voice volume

normal >

Door opening direction

Right Door >

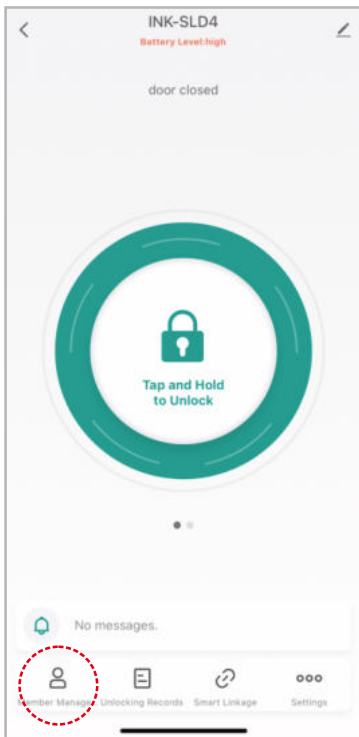


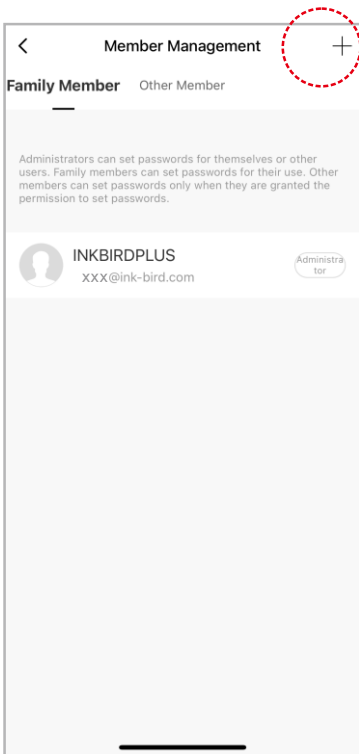
(2) Member Management

1) Add Family Members

Step1: Enter member management and click the "+" in the upper right corner to add a member.

Step2: Click "Add", enter your family member information, and save your settings.







Add Member

Family Member

After adding:

1. The user will join the family.
2. The user will be able to control and use all devices in the family.



Add

Other Member

After adding:

1. The user only appears in the member list of the current lock and can only view their own unlocking records.
2. The user cannot obtain the permissions to operate or manage the lock.
3. To grant the user operation permissions on the lock, you must use the device sharing function.

Add

<

Add Member

Save

Name

Please enter a home member name

Region

United States of America

>

Account

Please enter your account

Only after accepting the invitation will the account owner become a family member and be able to use relevant functions.

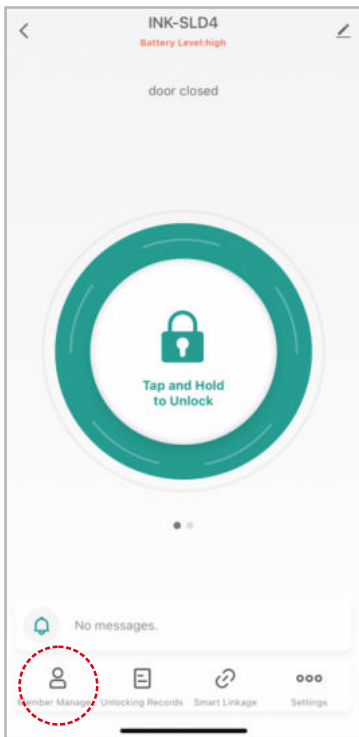
Family Role

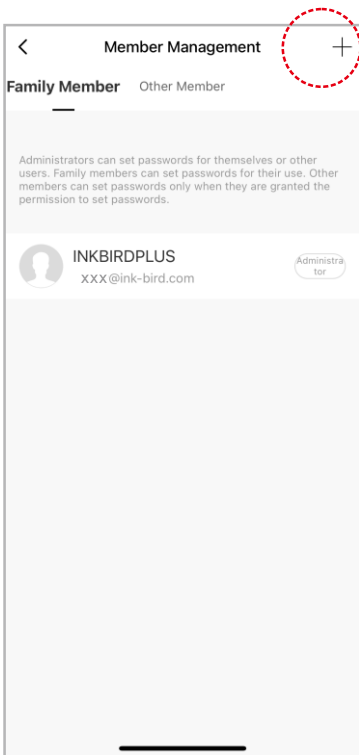
Common Member

>

Delete Member. You can click the member's name in your home to remove him from the list.

- 2) **Add Other Members** (for limit users like hotel, homestay, rental housing)
- Step1:** Enter member management and click the "+" in the upper right corner to add a member.
- Step2:** Click "Add", enter the member name, set permissions, and then save and quit. Note that the effective period must be set.







Add Member

Family Member

After adding:

1. The user will join the family.
2. The user will be able to control and use all devices in the family.

Add

Other Member

After adding:

1. The user only appears in the member list of the current lock and can only view their own unlocking records.
2. The user cannot obtain the permissions to operate or manage the lock.
3. To grant the user operation permissions on the lock, you must use the device sharing function.


Add

Cancel

Add Other Member

Save

Profile Photo




Nickname


>

Permission Settings


Fingerprint Management




Password Management




Card Management



Unlock with Mobile Phone



Dynamic Password Management



Set Validity Period

Set Validity Period

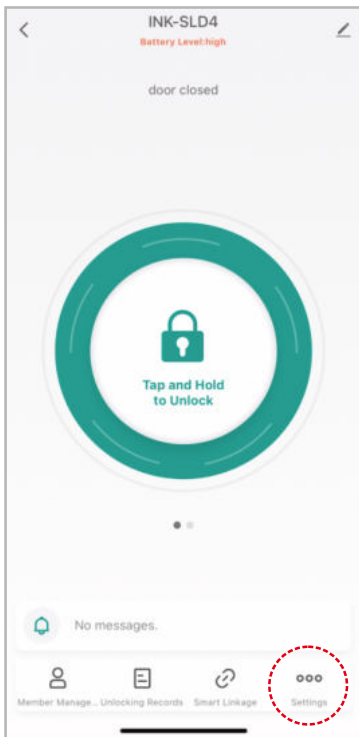
Start and End Time

Effective Period

Note: After a battery change or power outage, other members cannot unlock the door until the administrator reconnects to the app and refreshes.

(3) Auto Lock & Auto Lock Time Setting (6 seconds by default)

Note: When the auto lock is disabled, the lock is in the Normally Open mode.





Settings



Fingerprint Ma...



Password Man...



Card Managem...

Smart Linkage



automatic lock



auto lock delay time set

6s >

Device language

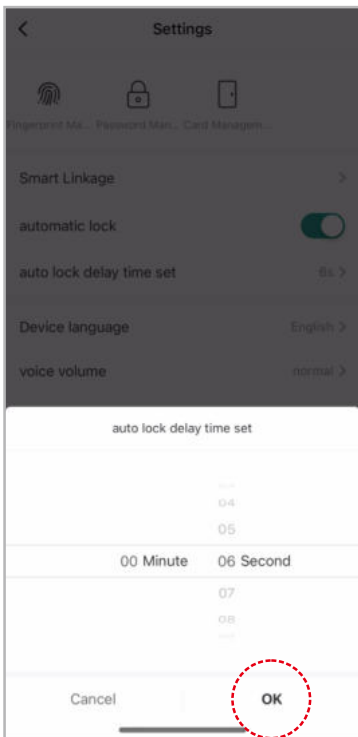
English >

voice volume

normal >

Door opening direction

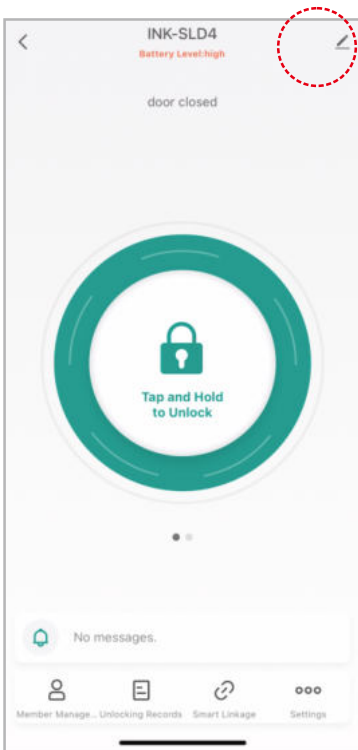
Right Door >

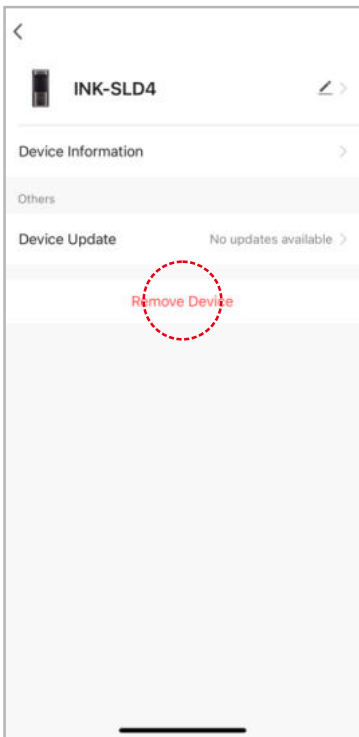


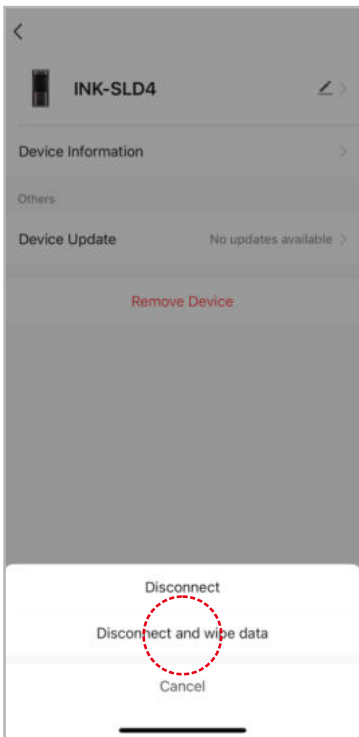
(4) Factory Reset (only administrator is available)

Step1: Click "EDIT" in the upper right corner, then click "Remove device" to delete device data.

Step2: Click "Confirm" to delete all data.









INK-SLD4



Device Information



Others

Device Update

No updates available



**Are you sure you want to disconnect
this device and wipe data?**

The device will be removed from the
device list and reset to factory settings.
All related data will be wiped.

Cancel

Confirm

Device Operation

(How to Finish the Settings without APP)

Preparations

- 1) Complete the hardware installation.
- 2) Install 4 AAA batteries.
- 3) (After the first hardware installation, be sure to restore the factory settings) Press and hold the reset button in the lower right corner of the battery compartment for 5 seconds.

Note: Wake up the keyboard by touching and holding it for 2 seconds.

1. How to Add Fingerprints, Passwords, and IC Cards

Note: The local input fingerprint, password, and IC card can all be administrators. The first three users are administrators.

Press "2" and then "🔑" to add:

- 1) Add Fingerprint: Enter your fingerprint as prompted. Each fingerprint need to be entered 3 times. Note that to ensure the integrity of the fingerprint, you should enter a different part of your fingerprint each time.
- 2) Add Password: Enter a 6-digit password. Password registration needs to be entered 2 times.
- 3) Add IC Card: Hold the IC card close to the card sensing area until you hear a sound indicating success.
- 4) Press the "🔑" key to quit adding users.

2. Optional Functions

1) Automatic Locking

After 10 failures to open, the system will automatically lock for 3 minutes.

2) Normal Open Mode

Press "3" and then "🔑" to enter the Normal Open mode. (Operation timeout: 10 seconds) If you have added an administrator, it requires verification of administrator information. Press the "🔑" key to quit the Normal Open mode.

3) Voice Language Switch

Press "4" and then "🔑" to switch the voice language between Chinese and English. (Operation timeout: 10 seconds)

4) Volume Adjustment

Press "5" and then "🔑" to enter volume setting. (Operation timeout: 10 seconds)

Then, press "0" and "🔑" to mute the sound; press "1" and "🔑" to choose the lowest volume; press "2" and "🔑" to choose low volume; press "3" and "🔑" to choose high volume; press "4" and "🔑" to choose the highest volume.

5) Door Opening Direction (must be set in initialization state)

Press "7" and then "🔑" to set the door to open left or right. If the deadbolt is locked (when exposed), the calibration is done automatically and all lights go out. If the deadbolt is unlocked (when not exposed), turn the knob left or right to lock the deadbolt and the lock will automatically calibrate. All lights will go out after calibration succeeds. After calibration, users can unlock once with fingerprint verification.

6) Factory Reset

Method 1: Press and hold the reset button in the lower right corner of the battery compartment for 5 seconds to restore factory settings.

Method 2: Press "6" and then "🔑" to enter the factory reset after disconnecting all Bluetooth pairings. (Operation timeout: 10 seconds)

Note: After this operation, the data entered in the app will all be invalid.

Technical Parameters

External Lock Size	6.22x2.71x1.18 inches (158x69x30mm)
Panel Material	Premium Zinc Alloy
Surface Craft	PVD Electroplating
Compatible Lock Body	Single Key Hole
Door Thickness Requirement	1.37-2.16 inches (35-55mm)
Lock Cylinder Type	Super B-Class Mechanical Lock Cylinder
Operating Temperature	-4°F ~ 140°F (-20℃ ~ 60℃)
Networking Mode	Bluetooth
Powered By	4 Alkaline Dry Batteries (not included)
Low-Power Alarm Voltage	4.8 V
Standby Current	60 Ua
Working Current	<200 Ua
Unlock Time	Approx. 1.5 seconds
Control Panel	Capacitive Touch Screen
Type Of Fingerprint Head	Semiconductor Zfm-10 <0.001%<1.0%
False Rejection Rate (FRR)	<0.001%
False Admission Rate (FAR)	<0.1%
Fingerprint Capacity	50 Groups
Password Quantity	Supports 150 Groups (Unlimited Dynamic Passwords)
Card Type	IC Card
IC Card Quantity	2 Pcs
Opening Methods	App/Password/IC Card /Mechanical Key/Fingerprint
Initial Password	666666 (The password contains 6 digits; the virtual password contains 20 digits.)

FCC Warning Statement: Changes or modifications to this unit not expressly approved by the party responsible for compliance could void the user's authority to operate the equipment. This equipment has been tested and found to comply with the limits for a Class B digital device, pursuant to Part 15 of the FCC Rules. These limits are designed to provide reasonable protection against harmful interference in a residential installation. This equipment generates, uses and can radiate radio frequency energy and, if not installed and used in accordance with the instructions, may cause harmful interference to radio communications. However, there is no guarantee that interference will not occur in a particular installation. If this equipment does cause harmful interference to radio or television reception, which can be determined by turning the equipment off and on, the user is encouraged to try to correct the interference by one or more of the following measures:

- Reorient or relocate the receiving antenna.
- Increase the separation between the equipment and receiver.
- Connect the equipment into an outlet on a circuit different from that to which the receiver is connected.
- Consult the dealer or an experienced radio/TV technician for help.

This device complies with Part 15 of the FCC Rules. Operation is subject to the following two conditions: (1) this device may not cause harmful interference, and (2) this device must accept any interference received, including interference that may cause undesired operation.

FCC Radiation Exposure Statement

The antennas used for this transmitter must be installed to provide a separation distance of at least 20 cm from all persons and must not be co - located for operating in conjunction with any other antenna or transmitter.

IC Warning

This device complies with Industry Canada license-exempt RSS standard(s).

Operation is subject to the following two conditions: (1) this device may not cause interference, and (2) this device must accept any interference, including interference that may cause undesired operation of the device.

Under Industry Canada regulations, this radio transmitter may only operate using an antenna of a type and maximum (or lesser) gain approved for the transmitter by Industry Canada. To reduce potential radio interference to other users, the antenna type and its gain should be so chosen that the equivalent isotropically radiated power (e.i.r.p.) is not more than that necessary for successful communication.

This device complies with Canadian ICES-003 and RSS-210 & RSS-247.

Radiation Exposure: This equipment complies with Canada radiation exposure limits set forth for an uncontrolled environment.

IC Radiation Exposure Statement

The antennas used for this transmitter must be installed to provide a separation distance of at least 20 cm from all persons and must not be co-located for operating in conjunction with any other antenna or transmitter.

Avertissement IC

Cet appareil est conforme aux normes RSS sans licence d'Industrie Canada.

L'opération est soumise aux deux conditions suivantes: (1) cet appareil ne doit pas causer d'interférences, et (2) cet appareil doit accepter toute interférence, y compris celle susceptible de provoquer un fonctionnement indésirable de l'appareil.

Selon la réglementation d'Industrie Canada, cet émetteur radio ne peut fonctionner qu'en utilisant une antenne type et gain maximum (ou inférieur) approuvés pour Industrie Canada par l'émetteur. Réduire brouillage radioélectrique potentiel avec d'autres utilisateurs, le type d'antenne et son gain doivent être choisis que la puissance isotrope rayonnée équivalente (e.i.r.p.) n'est pas supérieure à celle nécessaire pour communication réussie.

Cet appareil est conforme aux normes canadiennes ICES-003 et RSS-210 & RSS-247.

Exposition aux radiations: Cet équipement est conforme à la réglementation canadienne sur les radiations.

limites d'exposition établies pour un environnement non contrôlé.

Déclaration d'exposition aux radiations IC

Les antennes utilisées pour cet émetteur doivent être installées de manière à assurer une distance de séparation d'au moins 20 cm au moins de toute personne et ne doivent pas être co-localisés pour fonctionner en conjonction avec autre antenne ou émetteur.

INKBIRD TECH.C.L.

support@inkbird.com

Factory address: 6th Floor, Building 713, Pengji Liantang Industrial Area, NO.2 Pengxing Road, Luohu District, Shenzhen, China

Office address: Room 1803, Guowei Building, NO.68 Guowei Road, Xianhu Community, Liantang, Luohu District, Shenzhen, China

EC

REP

Like Sun GmbH

Planckstr. 59, 45147 Essen, Nordrhein-Westfalen, Germany
Email: ec-connection@web.de

UK

REP

TANMET INT'L BUSINESS LTD

9 Pantygraigwen Road, Pontypridd, Mid Glamorgan, CF37 2RR, UK
Email: tanmetbiz@outlook.com



MADE IN CHINA

Points de collecte sur www.quefairedemesdechets.fr
Privilégiez la réparation ou le don de votre appareil !