



User Guide

Thank you for purchasing the Go-tcha Generation for Pokémon GO!

Enjoy Pokémon GO on the move without looking at your smartphone!

What's In The Box?

In your Go-tcha Generation for Pokémon Go box you should receive:

- ⌚ x1 Go-tcha Generation device complete with wristband
Note: The wristband is not interchangeable – do not attempt to remove or damage may result.
- ⌚ x1 Magnetic USB charging cable



Connecting Your Go-tcha

To connect your Go-tcha Generation to the Pokémon Go App:

- ⌚ Open the Pokémon Go App
- ⌚ Select Main Menu
- ⌚ Select Settings
- ⌚ Select 'Pokémon GO Plus'
- ⌚ Press the button on the Go-tcha Generation to make it discoverable to the Pokémon Go App
- ⌚ Select your 'Pokémon GO Plus' under the 'Available Devices' list to connect.

Using Your Go-tcha Generation - Manual Catch

- ⌚ Go-tcha Generation will vibrate and animate the screen to show a new/duplicate Pokémon is near
- ⌚ Press the Go-tcha Generation button/screen to catch the Pokémon
- ⌚ Go-tcha Generation will vibrate and animate the screen to show a successful/unsuccessful catch
- ⌚ Go-tcha Generation will vibrate and animate the screen to show when a Pokéstop is in range
- ⌚ Press the Go-tcha Generation button to retrieve items from a Pokéstop
- ⌚ Go-tcha Generation will vibrate and animate the screen to show it has successfully/unsuccessfully collected the items and how many items it has collected

See '**Go-tcha Generation Screens**' on pages for a complete guide to the screen animation alerts.

Using Your Go-tcha Generation- Auto Catch

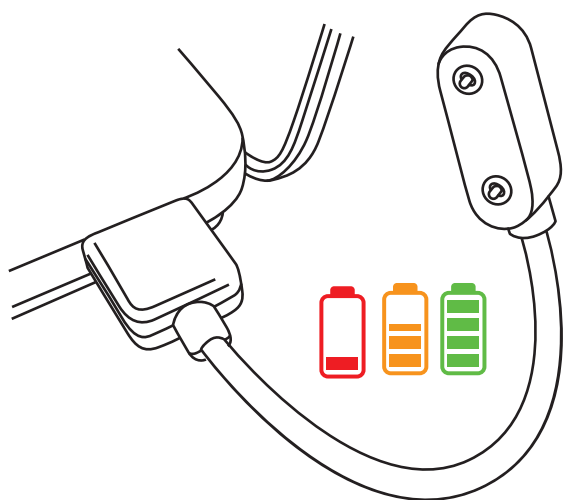
To turn the 'Auto-catch' function on, press the Go-tcha Generation button until '**Auto-catch ON**' is selected.

If you have Auto Catch on:

- Go-tcha Generation will vibrate and animate the screen to show a successful/unsuccessful catch
- Go-tcha Generation will vibrate and animate the screen to show it has successfully/unsuccessfully collected the items and how many items it has collected at a Pokéstop

To turn 'Auto-catch' off, press and hold the Go-tcha button until '**Auto-catch OFF**' is selected.

Charging Your Go-tcha Generation



The Go-tcha Generation charges via a magnetic USB cable. Simply attach the magnetic cable to the charging port on the back of the Generation watch and connect the other end to a USB power source. The cable will only connect one way around - you will feel the magnets indicating the correct orientation as you position the connector. Duration of battery life depends on intensity of game-play.

Once connected you can check that your Go-tcha is charging by pressing the screen button. The charging animation will appear to confirm that the Go-tcha is charging. If there is another Go-tcha animation running, then wait for the animation to stop and the screen is blank - now press the screen button to confirm the charging animation is displayed.

Go-tcha Generation Screens



Auto-catch
ON



Auto-catch
OFF



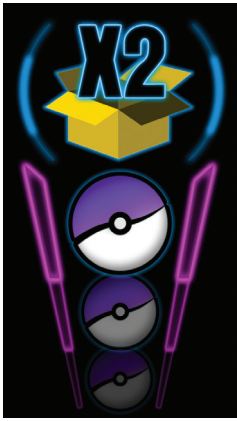
Auto-catch
new Pokémon
ON



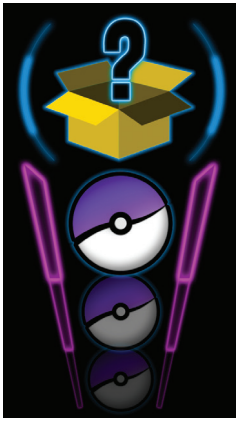
Auto-catch
new Pokémon
OFF



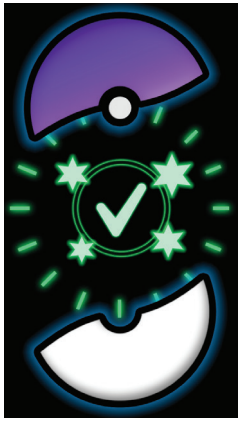
Mystery
Item



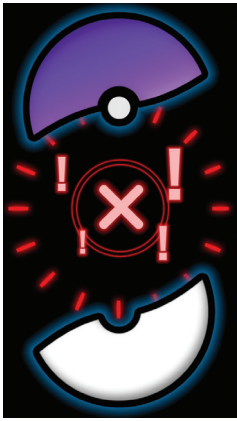
Catching Known
Pokémon



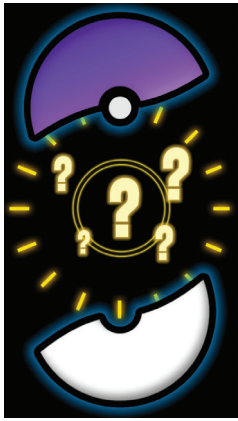
Catching
Unknown
Pokémon



Pokémon
Caught



Pokémon Not
Caught



Caught Unknown
Pokémon



Auto-collect
Pokéstop **ON**



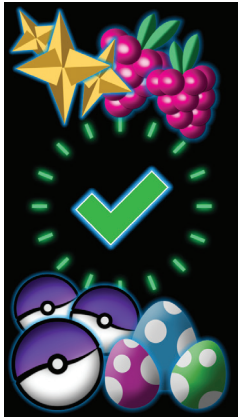
Auto-collect
Pokéstop **OFF**



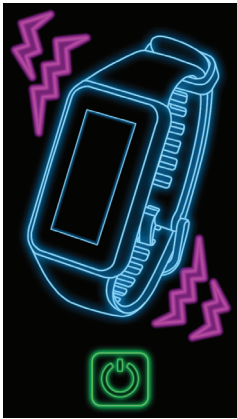
Pokéstop
In Range



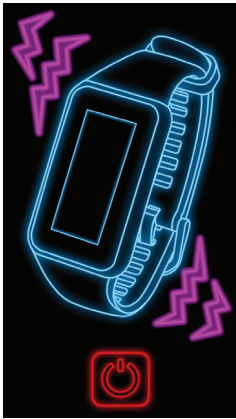
Pokéstop
Success
Multiple Items



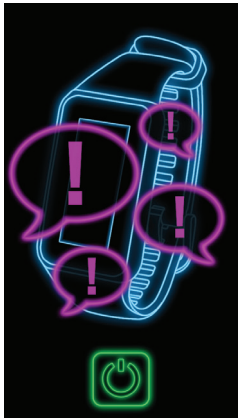
Pokéstop Item
Success



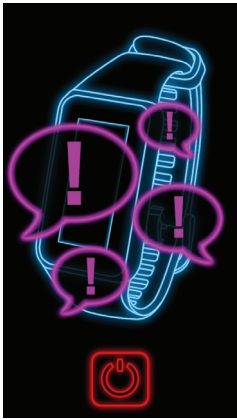
Vibration
ON



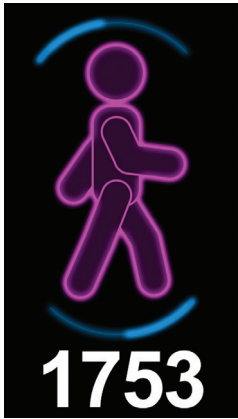
Vibration
OFF



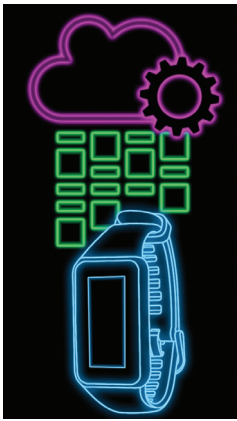
Notifications
ON



Notifications
OFF



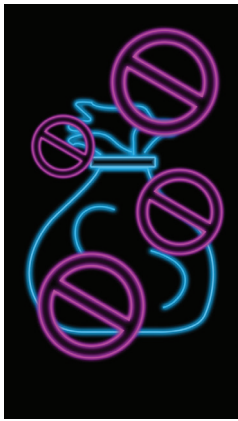
Pedometer



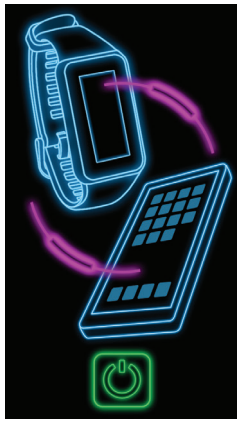
Update In Progress



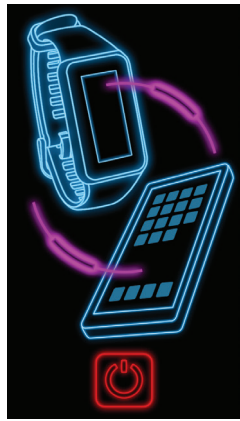
Out of Pokéballs



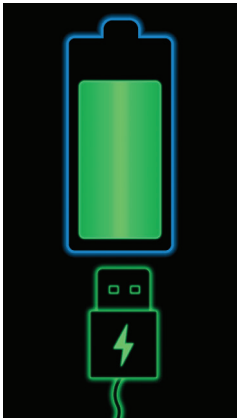
Bag Full



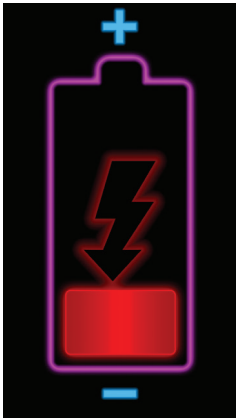
Device is paired



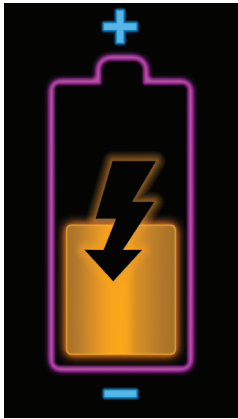
Device not paired



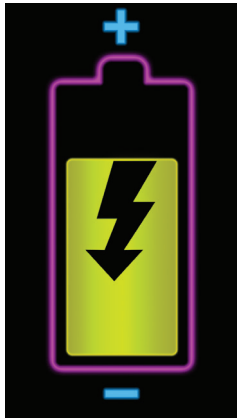
Device Is Charging



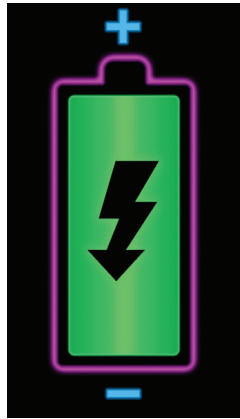
Battery Status



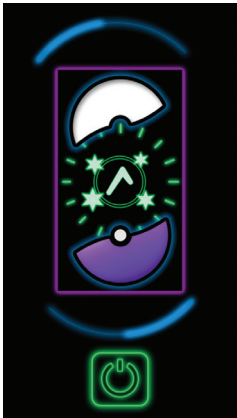
Battery Status



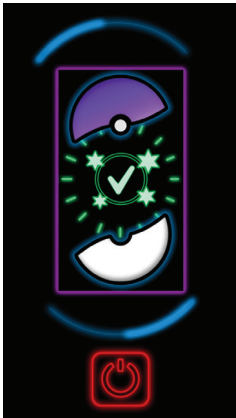
Battery Status



Battery Status



Flip Screen 180°



Normal Screen

Before You Start - Ensure that your Go-tcha Generation is running the latest firmware

Download the Go-tcha Generation App for even more features like checking your stats and changing your smartwatch settings to enhance the Go-tcha experience. Simply scan the QR code to take you to Go-tcha Generation on the Apple App Store page or the Go-tcha Generation Web App for Android Users.



To connect your Go-tcha Generation to the Go-tcha Generation App, you must close the Pokémon Go App. Press the button on the Go-tcha Generation to wake the screen and it will connect automatically to the open Go-tcha Generation App. Updates will download automatically.

Note: The Go-tcha Generation cannot connect to more than one App at a time so the Pokémon Go App cannot be running in the background. If you tried to connect with the Pokémon Go App running, close both Apps and then open the Go-tcha Generation App again.



THIS PRODUCT IS NOT SPONSORED, ENDORSED, OR APPROVED BY THE POKÉMON COMPANY OR Niantic.

Device requires Bluetooth low-energy compatible smartphone with Pokémon GO app installed. Compatible with iPhones using iOS Ver. 12 onwards installed. Compatible with Android devices with 2 GB RAM or more, Bluetooth Smart (Bluetooth Ver. 4.0 or higher) capability, and Android Ver. 4.4–6.0 installed.

Technical Support

Before contacting Datel's customer service department, please ensure that you have read through and understood the information in this manual/guide. If you contact support, please ensure that you have information on when and where you purchased this product to hand.

Datel Customer Services

Customers Services,
Datel Electronics Ltd,
Stafford Road,
Stone,
Staffordshire,
ST15 0DG.
UNITED KINGDOM

Web: <https://support.codejunkies.com>



© 2022 Datel Ltd. Go-tcha Generation is a trademark of Datel Ltd. Pokémon is a trademark or registered Trademark of the POKÉMON COMPANY. All other trademarks are the property of their respective owners. Go-tcha Generation for Pokémon Go is a 100% unofficial product and is NOT sponsored, endorsed or approved by NINTENDO, nor any games developer or publisher.

Warning: Changes or modifications to this unit not expressly approved by the party responsible for compliance could void the user's authority to operate the equipment.

NOTE: This device complies with part 15 of the FCC Rules. Operation is subject to the following two conditions: (1) This device may not cause harmful interference, and (2) this device must accept any interference received, including interference that may cause undesired operation.

FCC Statement: This equipment has been tested and found to comply with the limits for a Class B digital device, pursuant to part 15 of the FCC Rules. These limits are designed to provide reasonable protection against harmful interference in a residential installation. This equipment generates, uses and can radiate radio frequency energy and, if not installed and used in accordance with the instructions, may cause harmful interference to radio communications. However, there is no guarantee that interference will not occur in a particular installation. If this equipment does cause harmful interference to radio or television reception, which can be determined by turning the equipment off and on, the user is encouraged to try to correct the interference by one or more of the following measures:

- Reorient or relocate the receiving antenna.
- Increase the separation between the equipment and receiver.
- Connect the equipment into an outlet on a circuit different from that to which the receiver is connected.
- Consult the dealer or an experienced radio/TV technician for help.

RF exposure compliance statement:

This device has been evaluated to meet the general RF exposure requirement

ISED Statement:

This device complies with Part 15 of FCC Rules [and contains license-exempt transmitter(s) that comply with innovation, Science and Economic Development Canada's licence-exempt RSS Standar(s)]. Operation is subject to the following two conditions:

- (1) This device may not cause interference; and
- (2) This device must accept any interference received, including interference that may cause undesired operation

The digital apparatus complies with Canadian CAN ICES 3 (B)/NMB 3(B).

This device meets the exemption from the routine evaluation limits in section 2.5 of RSS 102 and compliance with RSS 102 RF exposure, users can obtain Canadian information on RF exposure and compliance.

This equipment complies with Canada radiation exposure limits set forth for an uncontrolled environment.

French: L'émetteur/récepteur exempt de licence contenu dans le présent appareil est conforme aux CNR d'Innovation, Sciences et Développement économique Canada applicables aux appareils radio exempts de licence. L'exploitation est autorisée aux deux conditions suivantes:

- (1) l'appareil ne doit pas produire de brouillage, et
- (2) l'appareil doit accepter tout brouillage radioélectrique subi, même si le brouillage est susceptible d'en compromettre le fonctionnement.

l'appareil numérique du ciem conforme canadien peut 3 (b) / nmb 3 (b).

cet appareil est conforme à l'exemption des limites d'évaluation courante dans la section 2.5 du cnr - 102 et conformité avec rss 102 de l'exposition aux rf, les utilisateurs peuvent obtenir des données canadiennes sur l'exposition aux champs rf et la conformité.

Déclaration de conformité à l'exposition par radiofréquence :

L' équipement a été évalué et satisfait aux exigences générales d'exposition aux radiofréquences