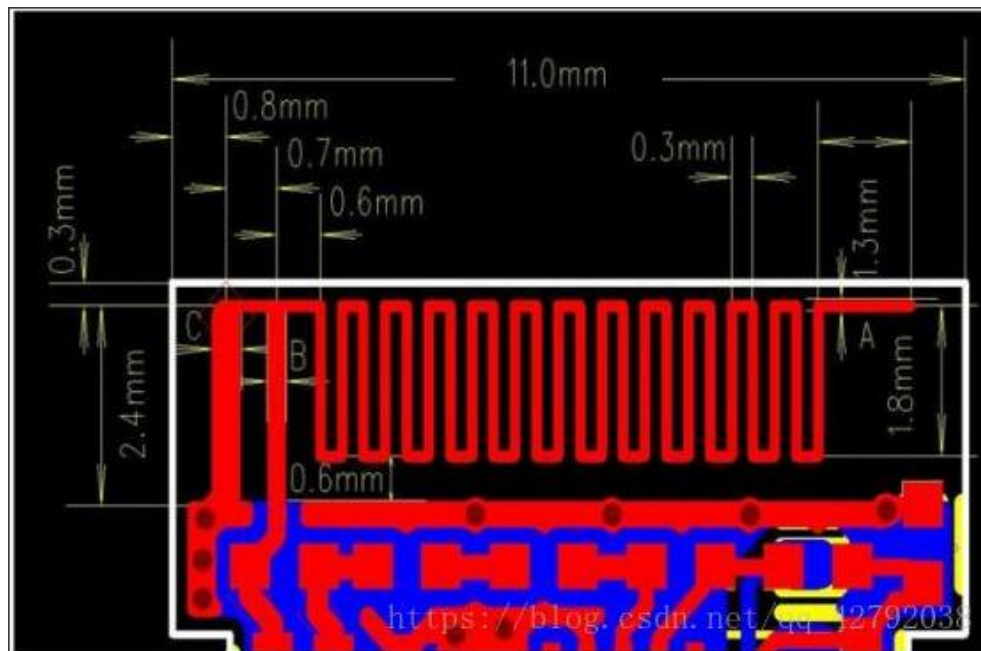
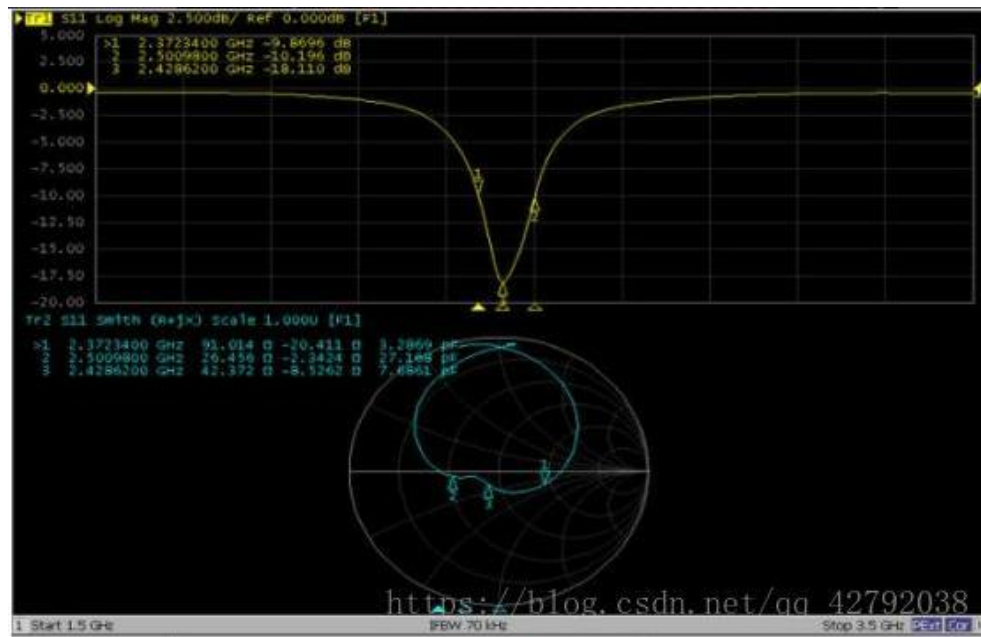


Design data of the 2.4G antenna on the PCB board

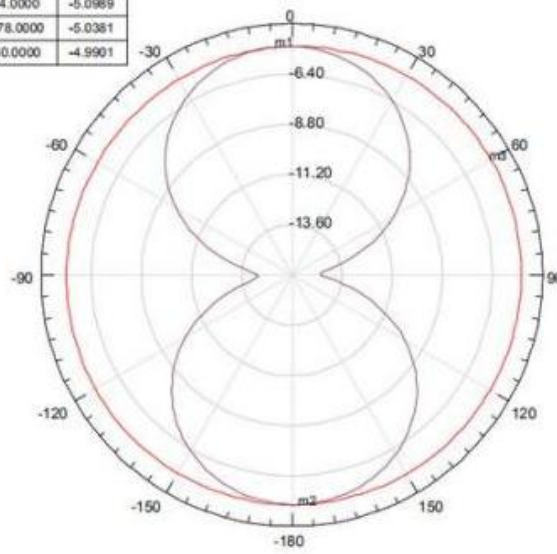
PCB antenna , due to constrained PCB space, The maximum gain will be about 6dB smaller than the other antennas, or the working distance will be half shorter. Thus the antenna and The size of the complete board made by MCU is about 11mm * 18mm.

The maximum gain of this antenna is only about -5dBi:



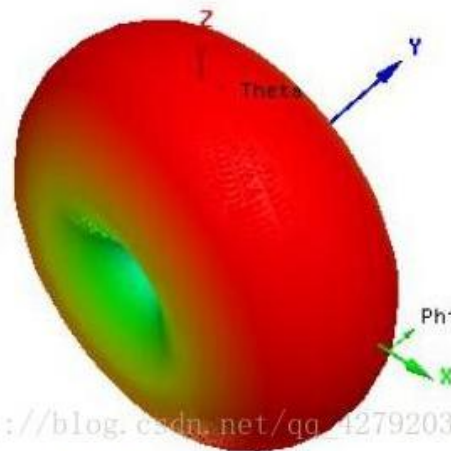
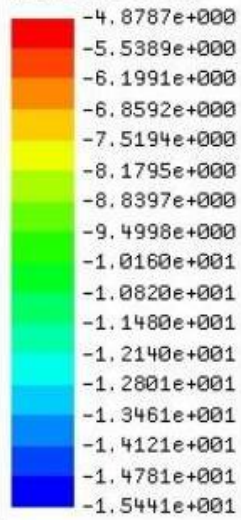


Name	Theta	Ang	Mag
m1	-4.0000	-4.0000	-5.0989
m2	178.0000	178.0000	-5.0381
m3	60.0000	60.0000	-4.9901



Curve Info
 dB(GainTotal)
 Setup1 : Sweep1
 Phi=0deg
 dB(GainTotal)
 Setup1 : Sweep1
 Phi=90deg

dB(GainTotal)



https://blog.csdn.net/qq_42792038