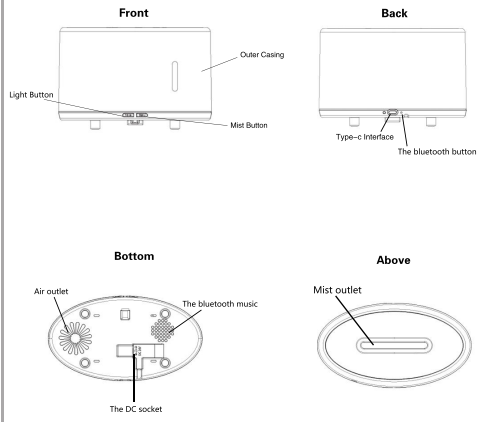
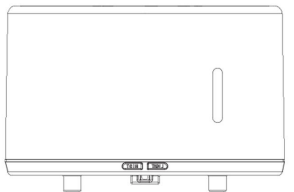
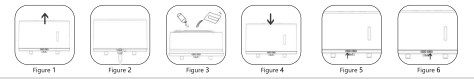


# Bluetooth Flame humidifier User Manual



## Instructions

- Put the product straight (the main unit cover is on the upper side) and open the upper cover. If there is water in this product, please do not open it obliquely. Figure 1
- Plug the USB port of the charging cable into the adapter, and the type-c port at the other end into the machine port. Figure 2
- Please fill the water tank with a measuring cup. The height of adding water should not exceed the highest water level at the top. Do not splash water outside the host. Do not add water during use. Do not use water over 50°C.
- Drop 2 to 3 drops (2-3ml) of essential oil vertically. Fig. 3
- Install the inner cover and outer cover: fasten the vertical cover to complete the installation. Figure 4
- Plug the adapter into the household power outlet.
- "LIGHT" Button function**  
Fire red (short press 1 time flame light 100%- short press 2 times - flame light 50%- short press 3 times off).  
7 colors (short press 1 time, flame lamp gradient cycle - short press 2 times - flame lamp set color until white light is selected to turn off)  
In any state, hold for 2 seconds to turn off the light. (Do not turn off the spray) Figure 5
- "MIST" button function**  
MIST button, Click open, and then click close. Hold for two seconds, one ring is small fog, and two rings are heavy fog. Figure 6  
Spray volume: heavy fog 35ml/h, small fog 25ml/h.
- Bluetooth button function**  
(Bluetooth button is on the side of Type-C interface) Press once to open and press again to close.  
Long press to disconnect the current connection, you can use another phone or device.  
When the power is on, the initial state is off.  
If there is water shortage in the water tank, even if the power is on, the aromatherapy machine will automatically turn off.  
If you do not use this product for a long time, please pour out the water in the water tank, wipe dry and place in a dry place.
- Please clean the inside of the container with neutral detergent before next use.

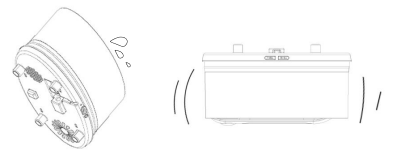


## ATTENTION

- A slight difference in spray concentration is normal.
- Factors that affect this include water type, humidity, temperature, air currents.
- If there is no water in the water tank, pressing the "MIST" button will not turn on diffuser, and the diffuser cannot be used without water.
- Only 100% natural essential oil can be used in this product. Oils contain chemical fragrance, spice or impurities may cause malfunction.
- Clean the unit as per the maintenance instructions before changing to a new type of essential oil.

## ACCIDENTAL LEAKAGE

- In the event of unit being knocked over or tipped during use, please follow the steps below to avoid malfunction
- Unplug the unit and remove cover
  - Drain out any remaining water from the drainage side;
  - Shake the unit gently to drain any water inside the mechanism, allow drying for at least 24 hours.



## MAINTENANCE

- After using 5-6 times or 3-5 days, please clean the product as follows. Please contact the selling department to repair it if necessary.
- Do not intentionally stab, twist or stretch the wires on the power adapter. Do not place the power cord in high temperature. Do not press the wires with heavy objects, and do not clamp or repair the wires with clamps.
- If the cable on the adapter is damaged or the socket becomes loose, please stop using it.
- If there is peculiar smell, noise or abnormal heat, it means that there is something wrong with the product or adapter. Please quickly unplug the adapter from the power socket and stop using it.
- Do not use the adapter in water, and do not store the adapter in damp places, such as bathrooms, changing rooms, greenhouses, etc.
- To ensure hygiene, the water in the water tank must be completely poured out from the drainage side after each use and wiped clean with a rag.
- Aromatherapy essential oil may cause staining. If it rises unexpectedly, wipe it with a rag immediately.
- Use a measuring cup to add water to the water tank. Do not directly use the tap to fill water.
- Do not spray directly on furniture, clothes or walls. Avoid direct sunlight, close to air conditioners, fans or high temperatures.
- It should be placed in a flat position, not on carpets, mats or uneven places.
- Avoid being placed next to electrical appliances such as televisions and speakers.
- This product should not be covered, which may cause water accumulation in the fuselage and damage the product.
- After working for a long time, it should be turned off for 60 minutes before being turned on to avoid damage to the ultrasonic board.
- Only suitable for tap water and purified water. Do not move the product during use.
- When your hands are wet, don't touch the product to avoid electric leakage.
- Keep out of reach of children and correctly teach children not to play with products.
- The product is not suitable for children or people who lack knowledge and experience of the product.

## PRECAUTIONS

- Do not change, dismantle or repair the unit if you are not the technician. Please contact the selling department to repair it if necessary.
- Do not intentionally stab, twist or stretch the wires on the power adapter. Do not place the power cord in high temperature. Do not press the wires with heavy objects, and do not clamp or repair the wires with clamps.
- If the cable on the adapter is damaged or the socket becomes loose, please stop using it.
- If there is peculiar smell, noise or abnormal heat, it means that there is something wrong with the product or adapter. Please quickly unplug the adapter from the power socket and stop using it.
- Do not use the adapter in water, and do not store the adapter in damp places, such as bathrooms, changing rooms, greenhouses, etc.
- To ensure hygiene, the water in the water tank must be completely poured out from the drainage side after each use and wiped clean with a rag.
- Aromatherapy essential oil may cause staining. If it rises unexpectedly, wipe it with a rag immediately.
- Use a measuring cup to add water to the water tank. Do not directly use the tap to fill water.
- Do not spray directly on furniture, clothes or walls. Avoid direct sunlight, close to air conditioners, fans or high temperatures.
- It should be placed in a flat position, not on carpets, mats or uneven places.
- Avoid being placed next to electrical appliances such as televisions and speakers.
- This product should not be covered, which may cause water accumulation in the fuselage and damage the product.
- After working for a long time, it should be turned off for 60 minutes before being turned on to avoid damage to the ultrasonic board.
- Only suitable for tap water and purified water. Do not move the product during use.
- When your hands are wet, don't touch the product to avoid electric leakage.
- Keep out of reach of children and correctly teach children not to play with products.
- The product is not suitable for children or people who lack knowledge and experience of the product.

## TROUBLESHOOTING

Please refer to the below in the event of the product operating abnormally

The aromatherapy machine will automatically turn off within one second after the switch is turned on.	Please confirm whether there is water in the container? Or is there enough water? -- Please add water to the container. Is the AC adapter connected with this product properly? -- Please confirm that this product is connected to the adapter. Please unplug the DC plug from the bottom and plug it in again, and then try again.
There is no spray or spray abnormality.	Is there too little water in the container? Or too much? -- Please add water to the container. If the water in the container exceeds 200ML, an abnormality may also occur.
Water leakage	Is the upper cover properly covered? -- Reinstall the upper cover. Too low or too high? -- If the temperature is too low or too high, the fog on the surface can easily gather together to form water droplets.

## SPECIFICATION

Size	173*95*125mm
Weight	370g
Power input/output	DC5V/2A
Length or cord	100CM
Power	6-9W
Tank capacity	200ML
材质	ABS/PP
Accessories	Adapter Instructions Measuring cup Remote control Machine
Spray quantity	20-30ML/hour

## WARRANTY CERTIFICATE

If you have trouble or malfunction when using this product, please contact the point of this product for replacement. Due to different fault situations, sometimes it is not a product quality problem. Please read this manual carefully before returning this product to the point of sale.

PRODUCT WARRANTY  
MAINTENANCE CERTIFICATE

Warranty time (one year after the date of buying)      DATE: \_\_\_\_\_

NAME: \_\_\_\_\_      ADDRESS: \_\_\_\_\_      TEL: \_\_\_\_\_

STAMP OF THE SHOP	REPAIRING RECORD:
-------------------	-------------------

We hereby declare that this product has passed the inspection and attach a product instruction manual. If you operate this product normally according to this manual. If the product itself fails, according to this manual, this product will be guaranteed free of charge for one year. Please make sure that the user information (name, address, etc.) on the maintenance certificate of the product quality guarantee is accurate. Because this information may be used in after-sales service, please understand. In addition, for the privacy information of consumers, we will not publish, lease or show your information to any third party except in special circumstances. Except as required by the court or to protect the rights and interests of the Company.

If this product fails during the warranty period, please bring the product manual, this product and the complete set of accessories to the sales point for maintenance. However, if any of the following circumstances occur, even during the warranty period, we can't repair it free of charge.

- This product has been purchased for more than one year.
- Can't provide the stamp or receipt of the sales point of the instruction to prove your purchase time.
- Change the date and other related information on the quality guarantee certificate.
- Faults caused by war, earthquake, fire, typhoon, flood and other natural disasters.
- This product is scratched, stained and damaged in appearance during use.
- Failure caused by unauthorized disassembly, assembly and maintenance.
- Faults caused by falling, using in water, improper operation or illegal use.
- Failure caused by using this product as another product.
- Failures caused by the addition of non-essential oils, except.

FCC Warning:

This equipment has been tested and found to comply with the limits for a Class B digital device, pursuant to part 15 of the FCC Rules. These limits are designed to provide reasonable protection against harmful interference in a residential installation. This equipment generates, uses and can radiate radio frequency energy and, if not installed and used in accordance with the instructions, may cause harmful interference to radio communications. However, there is no guarantee that interference will not occur in a particular installation. If this equipment does cause harmful interference to radio or television reception, which can be determined by turning the equipment off and on, the user is encouraged to try to correct the interference by one or more of the following measures:

- Reorient or relocate the receiving antenna.
- Increase the separation between the equipment and receiver.
- Connect the equipment into an outlet on a circuit different from that to which the receiver is connected.
- Consult the dealer or an experienced radio/TV technician for help.

Caution: Any changes or modifications to this device not explicitly approved by manufacturer could void your authority to operate this equipment.

This device complies with part 15 of the FCC Rules. Operation is subject to the following two conditions:

(1) This device may not cause harmful interference, and (2) this device must accept any interference received, including interference that may cause undesired operation.

This equipment complies with FCC radiation exposure limits set forth for an uncontrolled environment. This equipment should be installed and operated with minimum distance 20cm between the radiator and your body.