

G6 Business Headset

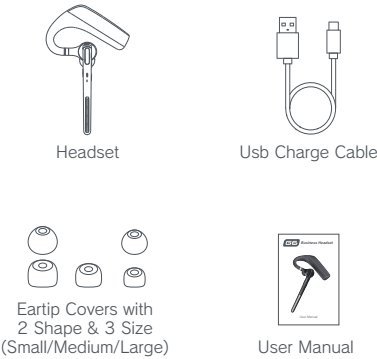


User Manual

Contents:

1.What's in the Box-----	2
2.Product Overview-----	3
3.Basic Operation -----	4
4.LED Indicator -----	5
5.Charging -----	5
6.Wear on the left or right -----	6
7.Pairing and Connection-----	6
8.Basic Specification -----	7
9.Safety Instruction -----	7

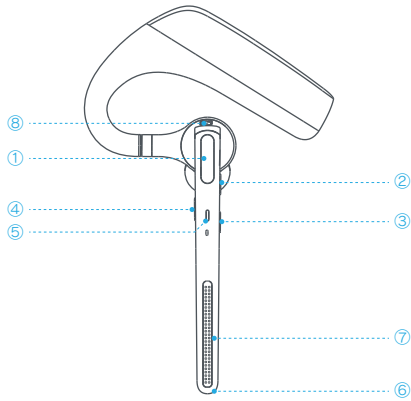
What's in the Box



Package Contents:

- A. Business Headset x 1
- B. Eartips x 6(Includes one on headset)
- C. Type-C Charging Cable x 1
- D. User Manual x 1

Product Overview



- | | |
|----------------------------------|---------------------|
| ① MFB
(Multi Function Button) | ⑤ LED Indicator |
| ② Volume+ | ⑥ Main Microphone |
| ③ Volume- | ⑦ Second Microphone |
| ④ Mute Button | ⑧ Charger Port |

Basic Operation

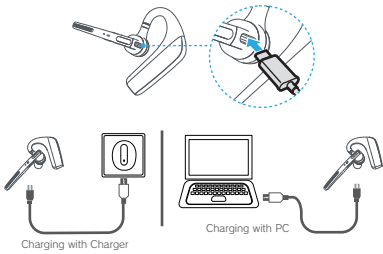
Button	Function	Operation
MFB	Power On	In off status, press MFB to power on.
	Power Off	In on status, long press 5 seconds to power off.
	Enter into Pairing Mode	In off status, automatic enter into pairing mode.
	Connection	Connect for the first time, search and click to connect "G6 " on lists. When there is a pairing record, power on and enter into the auto-connect state.
	Answer a Call	Short press (when call coming)
	Hang up a Call	Short press (during a call)
	Reject a Call	Long press 1 second (when call coming)
	Play / Pause	Short press (when play music)
	Siri	Double press to activate Siri
Volume +	Volume Up	Short press
	Next Song	Long press for 1 seconds
Volume -	Volume Down	Short press
	Previous Song	Long press for 1 seconds
Mute	Mute/Unmute	Short press

LED Indicator

Mode	G6
Power On	LED Green flashes 1 second
Power Off	LED Red flashes 1 second
Pairing Mode	LED Red & Green flashes alternately
Connection Success	LED Red & Green off
Low Battery	Red LED flash
Charging	Solid LED Red
Full Charged	Solid LED Green

Charging

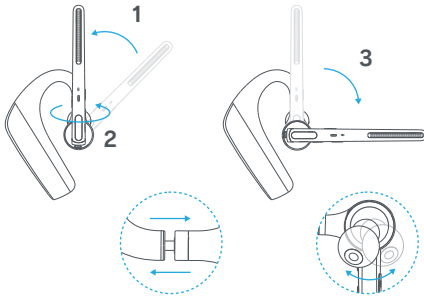
Connect the headset to a computer or the USB power adaptor (not included) via the USB cable. Plug the USB power adaptor into an electric socket.



Your new headset has enough power to pair and make a few calls before charging, though you may charge at any time.

Wear on the left or right:

To wear the headset on your other ear, rotate the boom upwards then twist it around so the eartip is on the other side before lowering the boom. Rotate the eartip and adjust the retractable earhook to fit the shape of your ear.



Pairing and Connection:

In off status, press MFB to power on and automatically enter into pairing mode with LED Green & Red flash alternately.

- A. Connect for the first time, search and click to connect "G6" on lists, LED off after connected success.
- B. When there is a pairing record, press MFB to power on and enter into the auto-connect state.

Basic Specification

Model	G6
Operating Range	33 feet/10 meters (No obstacles between)
Supporting Protocols	A2DP/HFP/HSP/AVRCP
Charging Time	3H
Talking Time	100H
Music Time	110H
Standby Time	90 Days
Battery Capacity	500mAh
Operation Temperature	-10~50℃
LED Indicator	Red/Green LED Light
Net Weight	17g

Safety Instruction

Do not place headset near naked flames sources. Such as candle or oven.

Do not expose the product to direct sunlight.

Press function bottom gently; Press too hard might shorten the lifetime of function.

Do not drop the product on hard surface. This may result in damage of the product.

Do not place headset near TV, speaker or other objects that generate strong magnetic fields.

When headset is affected by a strong magnetic field or by other interference simply turn off to reset headset to resume normal operation.

尺寸：70*105mm
材质：105g铜版纸
印刷：四色印刷
折叠方式：风琴四折页

FCC Statement

This device complies with part 15 of the FCC Rules. Operation is subject to the following two conditions: (1) This device may not cause harmful interference, and (2) this device must accept any interference received, including interference that may cause undesired operation.

This equipment has been tested and found to comply with the limits for a Class B digital device, pursuant to part 15 of the FCC Rules. These limits are designed to provide reasonable protection against harmful interference in a residential installation. This equipment generates, uses and can radiate radio frequency energy and, if not installed and used in accordance with the instructions, may cause harmful interference to radio communications. However, there is no guarantee that interference will not occur in a particular installation. If this equipment does cause harmful interference to radio or television reception, which can be determined by turning the equipment off and on, the user is encouraged to try to correct the interference by one or more of the following measures:

- Reorient or relocate the receiving antenna.
- Increase the separation between the equipment and receiver.
- Connect the equipment into an outlet on a circuit different from that to which the receiver is connected.
- Consult the dealer or an experienced radio/TV technician for help.

Caution: Any changes or modifications to this device not explicitly approved by manufacturer could void your authority to operate this equipment.

RF Exposure Information

The device has been evaluated to meet general RF exposure requirement. The device can be used in portable exposure condition without restriction.