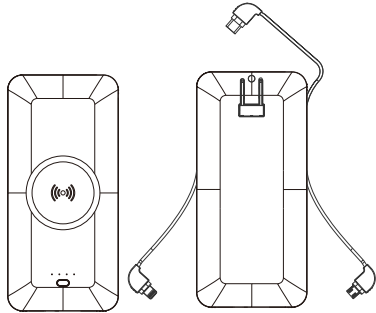
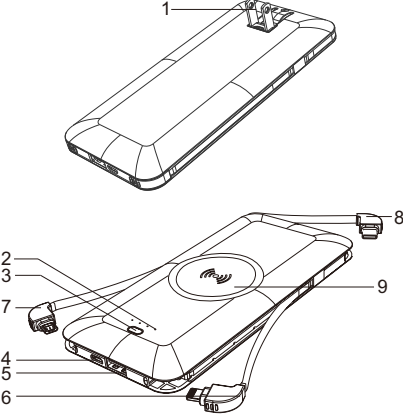


WIRELESS CHARGING
POWER BANK
AC Plug / Built-in charging cable
PB147ACW



DESCRIPTION



- 1.AC Plug
- 2.Power indicator
- 3.Power button
- 4.Micro USB input port
- 5.USB output port
- 6.Built-in output cable-1
- 7.Built-in output cable-2
- 8.Built-in output cable-3
- 9.Wireless charging zone

SPECIFICATIONS

Product name: Power bank
Item No: PB147ACW
Capacity: 3.7V/5000mAh 18.5Wh
AC plug in:110-240V-0.15A 50/60Hz
Built-in charging cable output1:5V=2.1A(max)
Built-in charging cable output2:5V=2.1A(max)
Built-in charging cable output3:5V=2.1A(max)
USB output:5V=2.1A(max)
Wireless output:5V=4A(max)
Micro USB input:5V=2A(max)
Max output:5V=2.1A(shared)

COMPATIBLE WITH

Tablet,Mobile phone,Smart phone,
Game console,Music player,Camera,Etc



Camera



GPS



Connected
band/watch



MP3/MP4



Mobile phone



Tablet

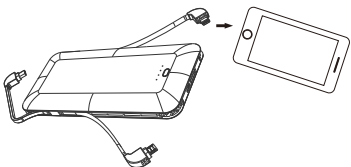
OPERATION INSTRUCTION

To turn on/off the power bank:

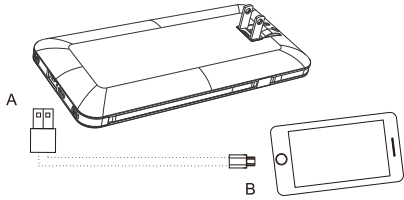
Quick press the power button to turn on the power bank.
Double click the power button to turn off the power bank.
* When the power bank is turned off, please wait for 2 seconds before trying to turn on again.

TO CHARGE YOUR ELECTRONIC DEVICE

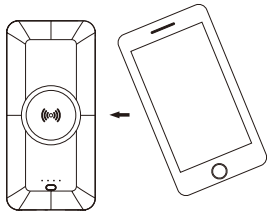
Option 1:
Your electronic device will be charged by power bank automatically once connected with the built-in cable. If not, please press the power button to turn on the power bank.



Option 2:
Connect the USB port to your electronic device with charging cable that comes with your electronic device, then power bank will start charging, if not, please press the power button to turn on the power bank.



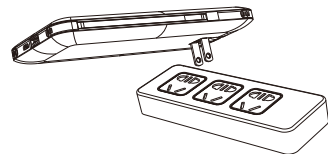
Option 3:
Turn on the power bank, lay the wireless charging supported mobile phone on the wireless charging zone of power bank, the mobile phone will be wirelessly charged.
If charging doesn't work, please adjust position of mobile phone.



TO CHARGE POWER BANK

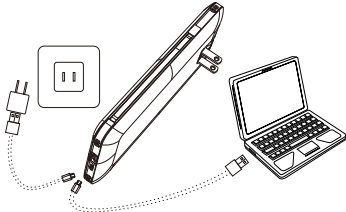
Option1: Using the built-in AC plug

Plug the built-in AC plug of the power bank into the AC outlet. The LED lights will illuminate and indicate battery level in the power bank. When all 4 LED lights are on and solid/none are flashing, the power bank is fully charged.



Option 2: Using Micro USB charging cable (Not included)

Connect power bank to a USB AC adaptor or the USB port of a computer with a micro USB charging cable (Not included). The LED lights will illuminate and indicate what battery level is in the power bank. When all the LED lights are on and solid/none are flashing, the power bank is fully charged.



CHECK THE BATTERY POWER LEVEL

Make a quick press and release on the power button, the LED indicators will light up for a few seconds then turn off automatically, each LED light represents approx 25% power of a full battery.

NOTE

* During charging the power bank, warming on the surface is normal, please do not cover it during charging, nor charging it in a high environmental temperature.

* Please do not use the power bank anymore if there is any visible physical damage occurred.

CAUTION

Dispose of used batteries according to the instruction. Risk of explosion if battery is replaced by an incorrect type.

The battery should not be exposed to excessive heat such as sunshine, fire or the like.

The device shall not be exposed to dripping or splashing, and no objects filled with liquids, such as vases, shall be placed on the device.

Please contact local recycling facility for removal of battery.

The embedded and non-replaceable battery is designed to last lifetime of the product.



Do not dispose of lithium battery with general waste.
Please return it to battery recycling collection point.



150912

MADE IN CHINA

FCC Statement

This device complies with part 18 of the FCC Rules. Operation

is Subject To the following two conditions:

(1) This device may not cause harmful interference, and (2) this device must accept any interference received, including interference that may cause undesired operation. Changes or modifications not explicitly approved by the party responsible for compliance could void the user's authority to operate this equipment.

Note: this equipment has been tested and found to comply with the limits for a Class B digital device, pursuant to part 18 of the FCC Rules. These limits are designed to provide reasonable protection against harmful interference in a residential installation. This equipment generates, uses and can radiate radio frequency energy and, if not installed and used in accordance with the instructions, may cause harmful interference to radio communications. However, there is no guarantee that interference will not occur in a particular installation. If this equipment does cause harmful interference to radio or television reception, which can be determined by turning the equipment off and on, the user is encouraged to try to correct the interference by one or more of the following measures:

- Reorient or relocate the receiving antenna.
- Increase the separation between the equipment and receiver.
- Connect the equipment into an outlet on a circuit different from that to which the receiver is connected.

- Consult the dealer or an experienced radio/TV technician for help.

The equipment complies with FCC radiation exposure limits set forth for an uncontrolled environment. During the operation of device a distance of 15 cm surrounding the device and 20 cm above the top surface of the device must be respected.

This device complies with Part 18 of the FCC Rules. This equipment generates uses and can radiate radio frequency energy and, if not installed and used in accordance with the instructions, may cause harmful interference to radio communications. If this equipment does cause harmful interference to radio or television reception, which can be determined by turning the equipment off and on, the user is encouraged to try to correct the interference by one or more of the following measures:

- Increase the separation between the equipment and any other radio device.
- Connect the equipment into an outlet on a circuit different from that to which the receiver is connected.