

**5 YEAR WARRANTY**  
Thermal Devices

**3 YEAR WARRANTY**  
Digital Devices

**CUSTOMER SERVICE**  
+1 (800) 580-5381  
[sales@rdx.com](mailto:sales@rdx.com)

# THERMAL MONOCULAR POCKET K2

User Manual v1.0



We deeply appreciate you choosing RDX.

Please read the instruction manual carefully before using this product.

Warm regards and happy hunting!

RDX

## 01 OVERVIEW

The POCKET K2 features advanced thermal imaging technology and high-sensitivity infrared detectors for exceptional outdoor night vision capabilities. With the ability to perform in all weather conditions, from sunny to rain, the POCKET K2 is perfect for night hunting, observation, and geographical positioning. Plus, it offers a range of functions including photography, video recording, and more.

## 02 FEATURES

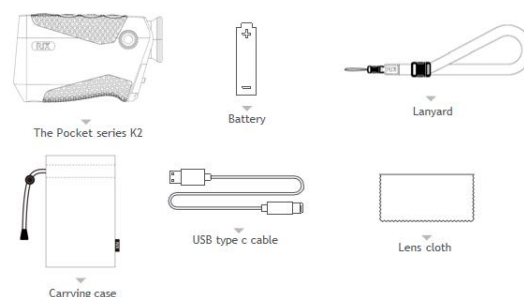
Sensor Resolution:256×192	Sensor NETD: < 25mK
Sensor Frame Rate:50Hz	Display screen:OLED 800x600
18650 replaceable battery	Light weight( < 190g)
Small, compact and can be placed in a pocket	Ergonomics design, comfortable to use

## 03 PARAMETERS

POCKET K2		
Sensor	Type	VOx Uncooled
	Resolution, pixels	256×192
	Pixel pitch, μm	12
	NETD, mK	<25
	Frame rate, Hz	50
Optics	Objective lens, mm	9
	Optic zoom, x	1.7-6.8
	Field of view (H), degrees / m @ 100 m	19.4/34.1
	Digital zoom, x	1×/2×/4×
	Eye relief, mm	13.5
Range Performance	Diopter Adjustment, D	-7D ~ +2D
	Detection range,m	468
Display	Type	OLED
	Resolution, pixels	800×600

Video Recorder	Video / photo resolution, pixel	800×600
	Video / photo format	.mp4 / .jpg
	Built-in memory, GB	8
Wi-Fi	Wireless Protocol	Wi-Fi
	Frequency, GHz	2.4GHz
Environmental Characteristics	Degree of protection, IP code	IP67
	Operating temperature range, °F	-4°F-120°F
	Battery type	18650
	Capacity, mAh	3200
	Operating time on battery pack (at t=22°C), h	7
Weight & Size	External power supply	5V (Type-C USB)
	Dimensions, inch	L:4.9,W:1.8,H:2.9
	Weight	< 190g (without battery)

## 04 IN THE BOX



Note: The box also includes an instruction manual, a quick to use guide, and a thank-you letter.

## 05 PRODUCT APPEARANCE



## 06 POWER SUPPLY

The POCKET K2 is powered by a replaceable 18650 battery.

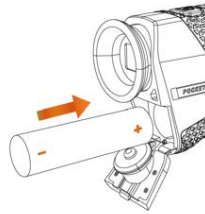
- To open the battery compartment lid, push down on the latch.
- Install the battery into the compartment, positive (+) pole inward and negative (-) pole outward, as indicated by the symbols inside the battery compartment.
- After inserting the battery, press and push up on the latch to secure the battery cover.



05

## WARNING

- Please remove the battery if the device is not in use for a long time.
- Do NOT power the device with a modified or damaged battery.
- Please Note:** The decrease in battery pack capacity under sub-zero temperatures is a normal occurrence and not a factory defect.
- Do not use the battery at a temperature above 50° C, as it may reduce the service life of the battery.



07

## 07 BUTTONS OPERATION

Button	Current Status	Short Press	Long Press
Power	Powered off	—	Power on the device
	Standby	Wake up the device	
	Home screen	Standby	Power off the device
	Menu screen	Return to the home menu with saving changes	—
Zoom	Home screen	Adjust the magnification	Manual Image Correction
	Menu screen	Flip up	—
Menu	Home screen	Switch image mode	Enter menu screen
	Menu screen	Adjust the parameters of a function	—
Video	Home screen	Start / Stop video recording	Take a photo
	Menu screen	Flip down	—

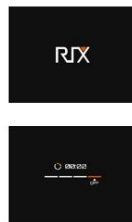
## 08 POWER ON/OFF

### Power On / Starting

- Open the objective lens cap. Press and hold the lens cap and push it downward.
- Long press the Power button for 3 seconds to turn on the unit. The RX logo will appear.

### Powering Off / Stopping

- Long press the Power button for 3 seconds to turn off the unit.



### Note

Releasing the Power Button at any time during this shutdown cycle will stop the shutdown process and the unit will enter standby mode. Short press on the Power button to exit standby mode.

### Warning

If using an external power supply, do not disconnect the power supply when saving data, otherwise the data may not be saved.

## 09 STATUS BAR

The status bar is located at the top of the screen and displays the operating status information of the riflescope.

From left to right:

- Image mode: White Hot (default), Black Hot, Red Hot, Color Hot.
- Digital zoom: 1x (default), 2x, 4x.
- Weather mode: Sun, Rain
- Image correction mode (A = Auto, M = Manual)
- Wi-Fi connection (Wi-Fi off; Wi-Fi on)
- Clock
- Battery Level



10

## 10 SHORTCUT FUNCTION

The shortcut functions can be directly used through buttons on the home screen.

### Digital Zoom (Zoom Button)

On the home screen, simply press the Zoom Button to zoom in and out on the subject. The status bar provides a real-time display of the magnification level as you adjust it.

### Manual Image Correction (Zoom Button)

This function is effective for enhancing degraded or uneven images. By balancing the background temperature of the detector, calibration can eliminate image defects and improve overall quality.

If you feel that the image is bad, you can press and hold the Zoom Button until hearing a clicking sound.

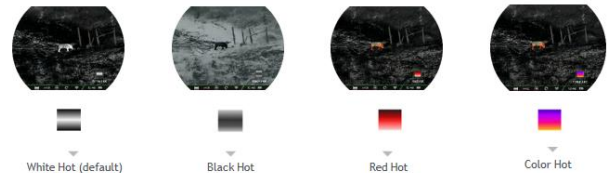
### Standby (Power Button)

If you are not currently using the device, but do not want to shut it down, you can use standby mode. This function can reduce device power consumption and extend battery life.

In power-on mode, briefly press the power button to enter standby mode, then press the power button again to exit standby mode.

### Image Mode (Menu Button)

Briefly press the menu button to switch the image mode including white hot (default), black hot, red hot, color hot.



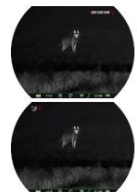
### Photo/Video (Video Button)

#### Video Recording

Short press the Video Button to start recording. A prompt box showing the recording time will appear in the upper left corner of the screen with a time format of HH:MM:SS (hour: minute: second). Short press the video button again to stop and save the video recording.

#### Photo Taking

Long press the Video Button to take a photo, and the screen will freeze with a photo icon flashing in the upper right corner.



11

## Note

- ▶ The photos and videos taken will be saved on the built-in memory card respectively in the format of IMG\_yyyyMMdd- dHHmmss.jpg (photos) and VID\_yyyyMMddHHmmss.mp4 (videos). It is recommended to synchronize the device time and date through the app before using the photo/video mode. You can find specific operation instructions in the RIX App which is available to download on our website, [www.rlx-nv.com](http://www.rlx-nv.com).
- ▶ The maximum duration of a video recording file is 10 minutes. When the duration is more than 10 minutes, the video will be automatically recorded onto a new file.
- ▶ For operations of photos and videos, turn on the device and connect it to the computer through a data cable. Double-click MY COMPUTER on the Desktop Screen, find the device named "RIX", and double-click to open the device named "POCKET\_Storage" to access the captured media.
- ▶ You can easily optimize the storage space by either deleting or moving the media files to a storage device.

To avoid damaged video footage, please turn off the device properly.

## 11 MENU

On the home screen, press and hold the menu button to open the menu screen. Choose functions by the enlarge and video button setting by the menu button.

### Screen Brightness

Press the menu button to set the screen brightness with a range of 1-10. 5 is the default.

### Image Contrast

Press the menu button to set the image contrast with a range of 1-10. 5 is the default.

### Weather mode

Press the menu button to set the weather mode, choosing sunny or rain.

### Auto Image Correction

Press the menu button to set the auto image correction on or off.

When the function is on, the device will automatically correct the image according to the software algorithm. When the function is off, on the home screen, you can press the enlarge button to correct it manually.

No matter the function is on or off, the manual image correction function can be used on the home screen.



12

## WiFi

The device has a built-in Wi-Fi module and can connect to an external device (computer or smartphone) via Wi-Fi.

1. Press the menu button to choose on/off.
2. Search for the Wi-Fi named "POCKET\_XXXXXX" on a phone or computer.
3. Select the Wi-Fi and enter the password to connect. The initial password is 12345678.

After a successful connection to Wi-Fi, the device can be controlled via the mobile app.

## Note

- ▶ You could change the name and password of the Wi-Fi in the app.
- ▶ In the app, find the My Device icon, and click it to enter the interface for settings.
- ▶ In the text box, enter and submit the new Wi-Fi name (SSID) and password.
- ▶ After submitting the changes, reset the device to activate them.

If the device is reset, the name and password of the Wi-Fi will also be restored to the default settings.



## Info

Product information includes the product model, software version number, WiFi name, PN code, SN code, and FCC ID.

15

16

## 12 APP DESCRIPTION

The device comes with a dedicated app. By connecting the device to the app on a cell phone, tablet, or laptop you can enjoy real-time image transmission, perform device operations, and receive program updates. Download instructions for using the app from the official website, [www.rlx-nv.com](http://www.rlx-nv.com).

Users have the option to update the firmware of the device by utilizing the app or downloading the latest version from [www.rlx-nv.com](http://www.rlx-nv.com).

### About App

You can download and install the app on the official website, [www.rlx-nv.com](http://www.rlx-nv.com), or by searching RIX+ in an app store.



RoHS  
FCC ID: 2A7ZZ-3A-03

## 13 PRODUCT MAINTENANCE

Prior to using the device, it is important to conduct a thorough technical inspection to ensure the following items are in proper working condition.

To remove dust and dirt from the metal and plastic parts, use a cotton cloth and gently wipe the surface clean.

Make sure that the 18650 battery being used is free from any bulges or deformations and that the plastic cover is not damaged.

## 14 TROUBLESHOOTING

Refer to the table below, which outlines potential issues that may arise during operation. For product issues that can not be remedied or are not listed below, please contact RIX Optics customer support by visiting [www.rlx-nv.com](http://www.rlx-nv.com).

Fault	Possible Causes	Solutions
The device cannot be started.	The battery is out of charge.	Charging
The device cannot be powered by an external power supply	The USB cable is damaged.	Replace the USB cable.
The image is too dark.	The external power supply is insufficient.	If necessary, check the external power supply.
The image quality is poor, or the detection range shortens.	The screen is not bright enough.	Adjust the display brightness
The device cannot connect to a mobile phone or computer.	These problems are likely to occur when you use the device in harsh weather (such as snow, rain, and fog).	
	The Wi-Fi password is incorrect.	Enter the correct password or reset the device back to factory setting.
	There are too many Wi-Fi networks in the range of the device, which may cause interference.	For a stable network connection, it is recommended to relocate the device to an area with a lower number of Wi-Fi networks.
Wi-Fi signals are lost or interrupted.	The device is beyond Wi-Fi coverage.	Move the device to a place where you can receive Wi-Fi signals.
When the device is used at a low temperature, the imaging quality is poorer than that at a normal temperature.	There is blocking (such as concrete walls) between the device and the receiver.	
	At temperatures above 0°C, the temperature rise varies with the observed objects (environment and background) due to different heat conductivity coefficients. As a result, high-temperature contrast occurs, and the image quality is better. At low temperatures, the observed targets (background) usually cool down to a similar temperature because of reduced temperature contrast. Therefore, the image quality (details in particular) is poor, which is a characteristic of thermal imaging devices.	

## FCC Caution

FCC ID: 2A7ZZ-3A-0

§ 15.19 Labeling requirements.

This device complies with part 15 of the FCC Rules. Operation is subject to the following two conditions: (1) This device may not cause harmful interference, and (2) this device must accept any interference received, including interference that may cause undesired operation.

§ 15.21 Information to user.

Any Changes or modifications not expressly approved by the party responsible for compliance could void the user's authority to operate the equipment.

§ 15.105 Information to the user.

Note: This equipment has been tested and found to comply with the limits for a ClassB digital device, pursuant to part 15 of the FCC Rules. These limits are designed to provide reasonable protection against harmful interference in a residential installation. This equipment generates uses and can radiate radio frequency energy and, if not installed and used in accordance with the instructions, may cause harmful interference to radio communications. However, there is no guarantee that interference will not occur in a particular installation. If this equipment does cause harmful interference to radio or television reception, which can be determined by turning the equipment off and on, the user is encouraged to try to correct the interference by one or more of the following measures:

- Reorient or relocate the receiving antenna.
- Increase the separation between the equipment and receiver.
- Connect the equipment into an outlet on a circuit different from that to which the receiver is connected.
- Consult the dealer or an experienced radio/TV technician for help.

## Body-worn Operation

This device was tested for typical body-worn operations. To comply with RF exposure requirements, a minimum separation distance of 0mm must be maintained between the user's body, including the antenna. Third-party belt-clips, holsters, and similar accessories used by this device should not contain any metallic components. Body-worn accessories that do not meet these requirements may not comply with RF exposure requirements and should be avoided. Use only the supplied or an approved antenna.

21

19