

HOOPOSENSE

INSTALLATION MANUAL

7.

MOUNTING GUIDELINES

The hoopoSense trackers should be ruggedly installed on top of various logistics assets such as various types of non-motorized ground support equipment, truck trailers, roll-off waste containers, and more.

Optionally: The hoopoSense trackers can be installed under a protective rubber cover (bumper). The bumper supports horizontal or vertical installation orientations.

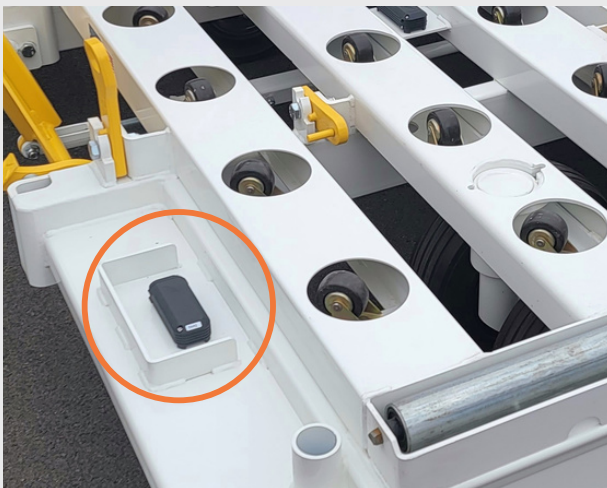
7.1.

OPTIMAL PLACEMENT OF THE TRACKER.

Optimize sky-view for better GPS positioning, and Cellular communication.

The hoopoSense tracker antennas are facing towards hoopo's logo on the unit. To allow high quality GPS reception, orient this side with a clear, unobstructed view of the sky.

FIGURE 11: HOOPOSENSE ORIENTATION



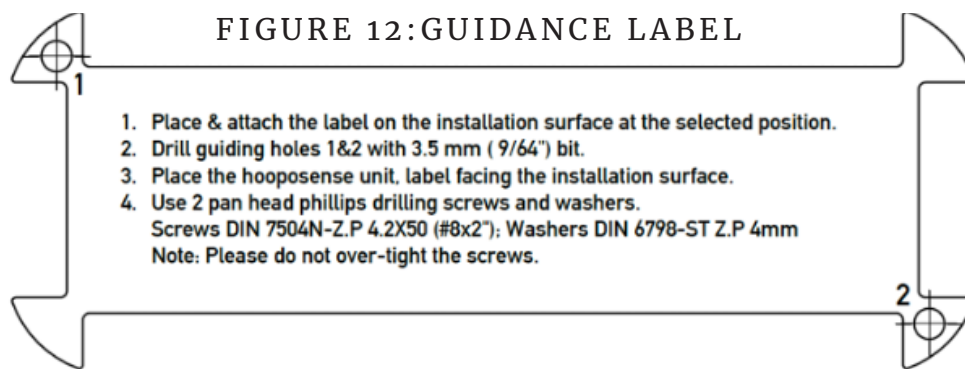
HOOPOSENSE

INSTALLATION MANUAL

8. TRACKER INSTALLATION

8.1. TRACKER ONLY

8.1.1. Paste the guidance label at the selected installation position on the asset.



8.1.2. Drill guiding holes 1&2 with 3.5 mm (9/64") bit.

8.1.3. Place the hooposense unit, label facing the installation surface.

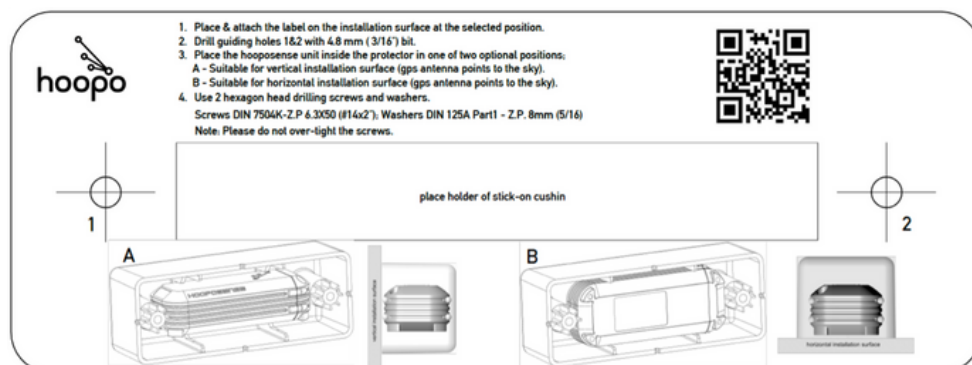
8.1.4. Secure the unit with the supplied pan head Phillips drilling screws and washers.

- Note: Please do not overtight the screws.

8.2. TRACKER UNDER PROTECTIVE COVER

8.2.1. Paste the protective cover guidance label at the selected installation position on the asset.

FIGURE 13: GUIDANCE LABEL WITH BUMPER



HOPOSENSE

INSTALLATION MANUAL

- 8.2.2. Drill guiding holes 1&2 with 4.8 mm (3/16") bit.
- 8.2.3. Attach the stick-on cushion in the center of the label.
- 8.2.4. Place the hoopSense unit inside the cover in one of the orientations:

FIGURE 14: PARALLEL
TO SURFACE



FIGURE 15: VERTICAL
TO SURFACE



- Note: Select the appropriate orientation to follow the guidelines in 8.1.1. above.
- 8.1.5. Place the protective cover with the hoopSense tracker inside on the label.
 - 8.1.6. Secure the cover with the supplied hexagon head drilling screws and washers using the appropriate socket drive.
 - Note: Always use the supplied stick-on cushion.
 - Note: Please do not overtight the screws.

HOPOSENSE

INSTALLATION MANUAL

9.

CONNECTIVITY

The hoopoSense trackers communicate via LTE CAT-M or LoRa.

10.

HOPO DASHBOARD LOGIN

The hoopoDashboard is created with a software called 'Power BI'. In the dashboard you'll see all the current, historical, and summarized data of your assets.

LOGIN

10.1. Enter the dashboard by clicking on the link you've received from the hoopo team.

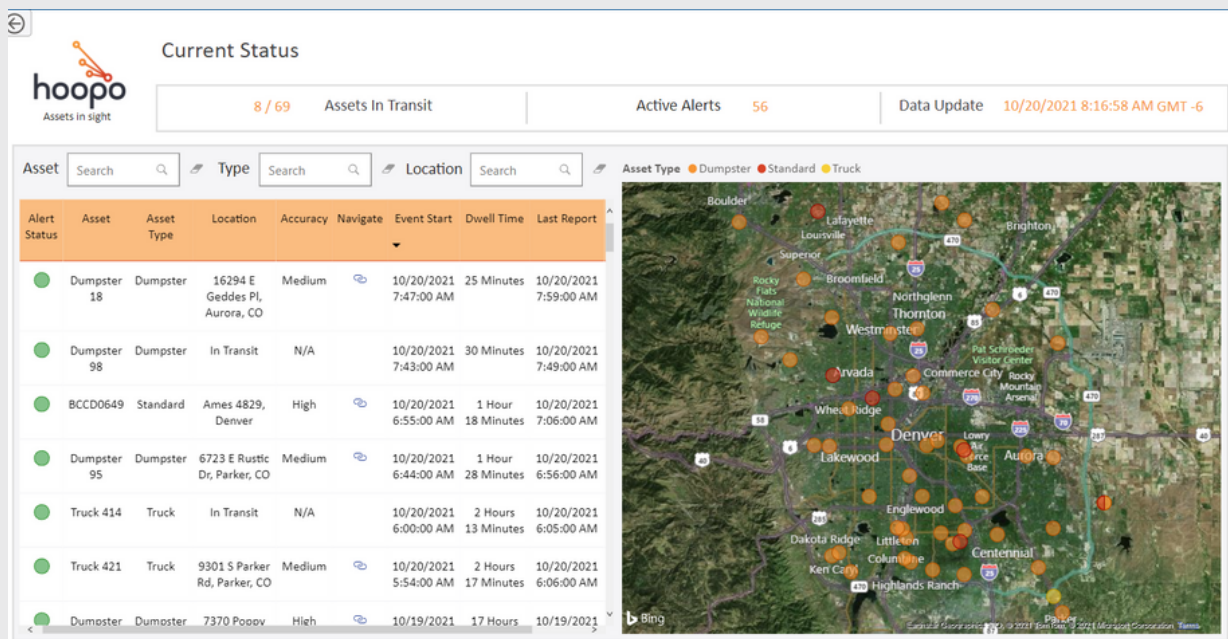
10.2. Click on the Log in button and insert the username and password you've received from the hoopo team.

10.3. You've now successfully entered the hoopoDashboard.

HOOPOSENSE

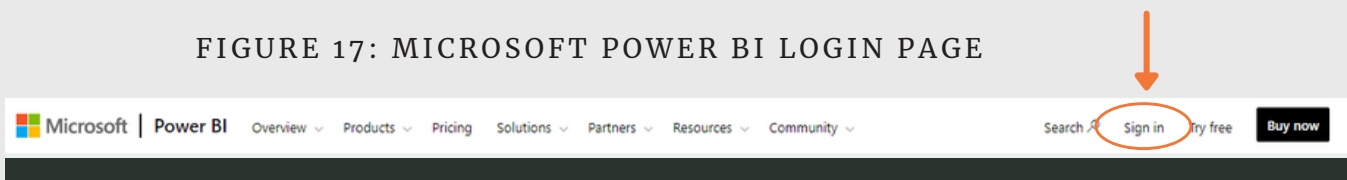
INSTALLATION MANUAL

FIGURE 16: HOOPODASHBOARD



10.4. You can also access Power BI by searching for it in the web browser search bar. If so, click on the 'sign in' in the top of the page

FIGURE 17: MICROSOFT POWER BI LOGIN PAGE



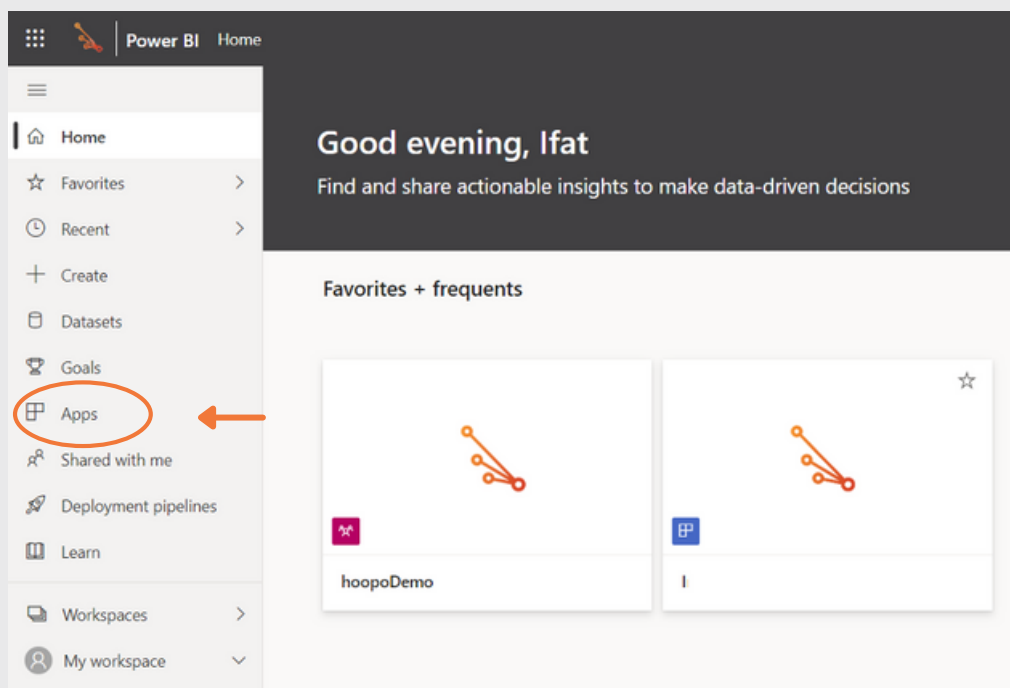
10.5. Insert the username and password you've received from the hoopo team.

HOOPOSENSE

INSTALLATION MANUAL

- 9.6. Click on 'APPS' in the left menu, and then click on the dashboard that appears with your company's logo.

FIGURE 18: MICROSOFT POWER BI HOME PAGE



- Note: we recommend you download the mobile Power BI app from the relevant store.
- To login use the username and password you've received from the hoopose team.

