



# GOULY LED CONTROLLER



## Instruction

## Product introduction

The controller is used for RGB chasing lights.

1. There are two ways to control the lights. Wifi and bluetooth.
2. For this controller, you can create thousands of your own patterns, each lights can be addressable, you can create a folder and collect your favorite patterns to your folder.
3. There are four color red, blue, green and white. The white color also can be dim and join to chasing with other three colors.
4. This controller can be remote control without limited distance and can set the timing on and off.
5. The controller can support IC types: WS2811, WS2801, UCS1903, UCS2903, UCS2904, TM1812, TM1814, TM1914, SK6812, GS8208, DMX512, SM16703, LPD8806.

## Product parameters

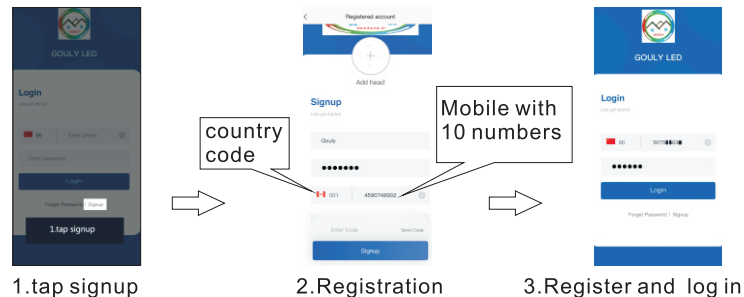
operation platform: IOS and Android  
Support language: English  
Working Temperature: -  
Working Voltage:  
Channels:  
Remote distance: Bluetooth is within 10meters. WIFI within 50-70meters  
Mark: One side of input voltage is 5VDC, Another is 5-24VDC, this controller can't be recharged.

## Download and install APP

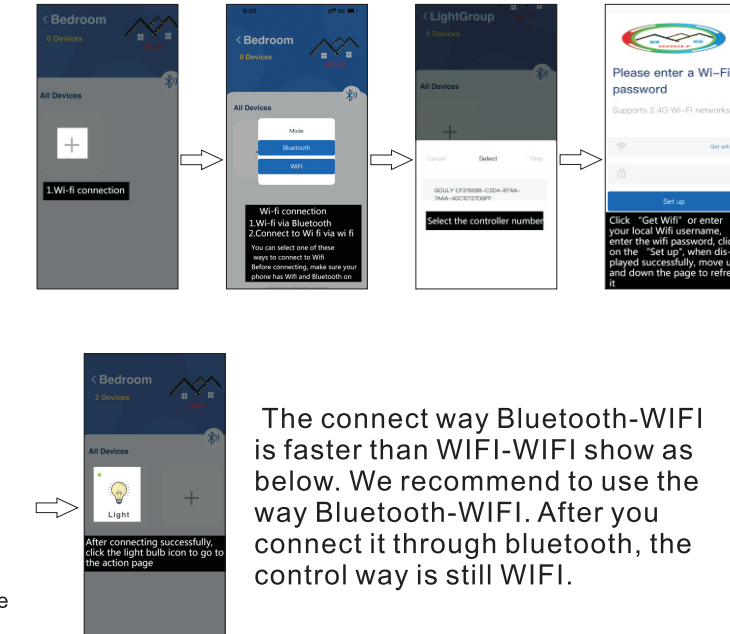
1. iPhone IOS system: Search "gouly led" and the app look like below. Click and install it.
2. Android system: open googly play and search "gouly led" the app look like the picture below. click and install it.

## Register

After install the APP and open it. The first step is to register show as below:



## Wifi connect way

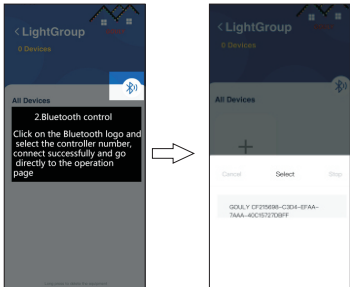


The connect way Bluetooth-WIFI is faster than WIFI-WIFI show as below. We recommend to use the way Bluetooth-WIFI. After you connect it through bluetooth, the control way is still WIFI.

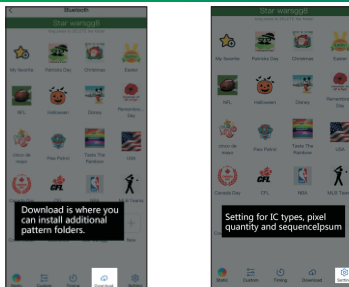
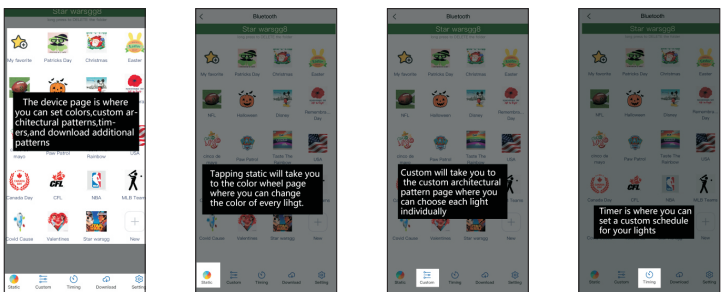
If you want to custom made your own product, welcome to contact us. We are professional on designing and producing custom made led products.

GOULY LED LIMITED  
E-mail: sales1@gouly-led.com  
Contact: Tel: +86-755-28058067  
Website: www.gouly-led.com

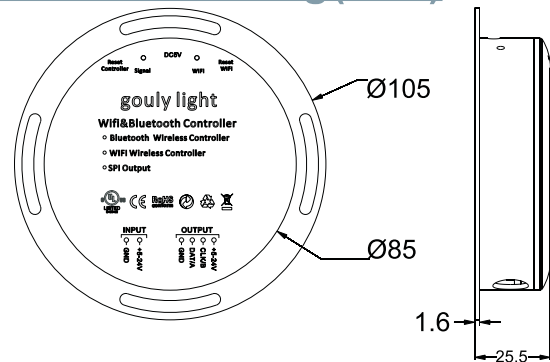
## Bluetooth connect way



## Page Introduction

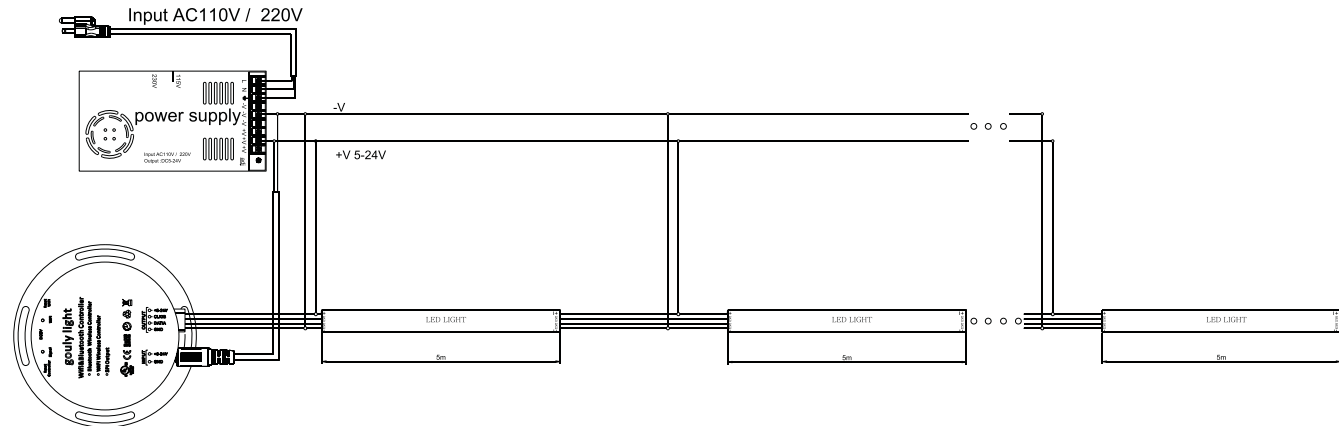


## Dimensional drawing (mm)



Each page have a tip to introduce how to use it. Just click each page of the right top

## Connection Diagram



- Mark: 1. When connect the lights over 5meters, please kindly connect(inject) power supply to avoid voltage drop.  
2. The controller provide signal only and not offer power for lights. When the lights of the power is over 20w, It need other power supply to power the lights. Please kindly avoid the current of the controller too large to burn the controller.  
3. After install the lights and power supply, please double check everything is correct then connect to controller to power them.

## **FCC STATEMENT :**

This device complies with Part 15 of the FCC Rules. Operation is subject to the following two conditions:

- (1) This device may not cause harmful interference, and
- (2) This device must accept any interference received, including interference that may cause undesired operation.

**Warning:** Changes or modifications not expressly approved by the party responsible for compliance could void the user's authority to operate the equipment.

NOTE: This equipment has been tested and found to comply with the limits for a Class B digital device, pursuant to Part 15 of the FCC Rules. These limits are designed to provide reasonable protection against harmful interference in a residential installation. This equipment generates uses and can radiate radio frequency energy and, if not installed and used in accordance with the instructions, may cause harmful interference to radio communications. However, there is no guarantee that interference will not occur in a particular installation. If this equipment does cause harmful interference to radio or television reception, which can be determined by turning the equipment off and on, the user is encouraged to try to correct the interference by one or more of the following measures:

- Reorient or relocate the receiving antenna.

- Increase the separation between the equipment and receiver.

- Connect the equipment into an outlet on a circuit different from that to which the receiver is connected.

- Consult the dealer or an experienced radio/TV technician for help.

## **FCC Radiation Exposure Statement:**

This equipment complies with FCC radiation exposure limits set forth for an uncontrolled environment. This equipment should be installed and operated with minimum distance 20cm between the radiator & your body.