

1. Safety Precautions (must be observed)

Important



Prohibition

Do not use this product in a distracted manner while riding in a vehicle or performing any sport or work that requires special care. Distractions may result in driving accidents, operating errors or other accidents.



Prohibition

If you find any abnormal condition, such as high temperature, smoke, discoloration, deformation or abnormal smell, please stop using it immediately. Otherwise, it may lead to malfunction, rupture, fire or electric shock.



Prohibition

Do not use the product in rain or high humidity environment.



Prohibition

Do not disassemble or modify this product, in order to avoid malfunction, fire or electric shock.



Prohibition

Do not use this product when there are medical devices or systems that directly or indirectly affect human life, or in environments that require a high degree of safety or reliability.



Compulsory

Do not overcharge the product (more than 24 hours) as this may cause the battery to swell. If swelling is observed, stop using the battery immediately and contact the manufacturer.



Compulsory

If you experience any skin problems while using this product, discontinue use.



Compulsory

When using the magnetic charging cable, please do not pull it directly. Please hold the head to plug and unplug.

16

2. Battery and Charging Precautions

- This product uses lithium-ion polymer batteries.
- Please do not store the battery in a completely full charge or completely dead state. To prevent degradation of its performance and product life, it should be used or charged once a month or so.
- Lithium-ion polymer batteries are a consumable product, and they are not covered by warranty.



3. Product Accessories

The product contains the following accessories.
Please check the package contents before use.

- ① CODEON Headphones
(Bone conduction headphone)
- ② CODEON Sound Collector
- ③ Power adapter
- ④ Magnetic charging cable
- ⑤ Storage bag
- ⑥ Audio connection cable
- ⑦ Earbuds

- ☐ Warranty card and operating instructions
(this manual)

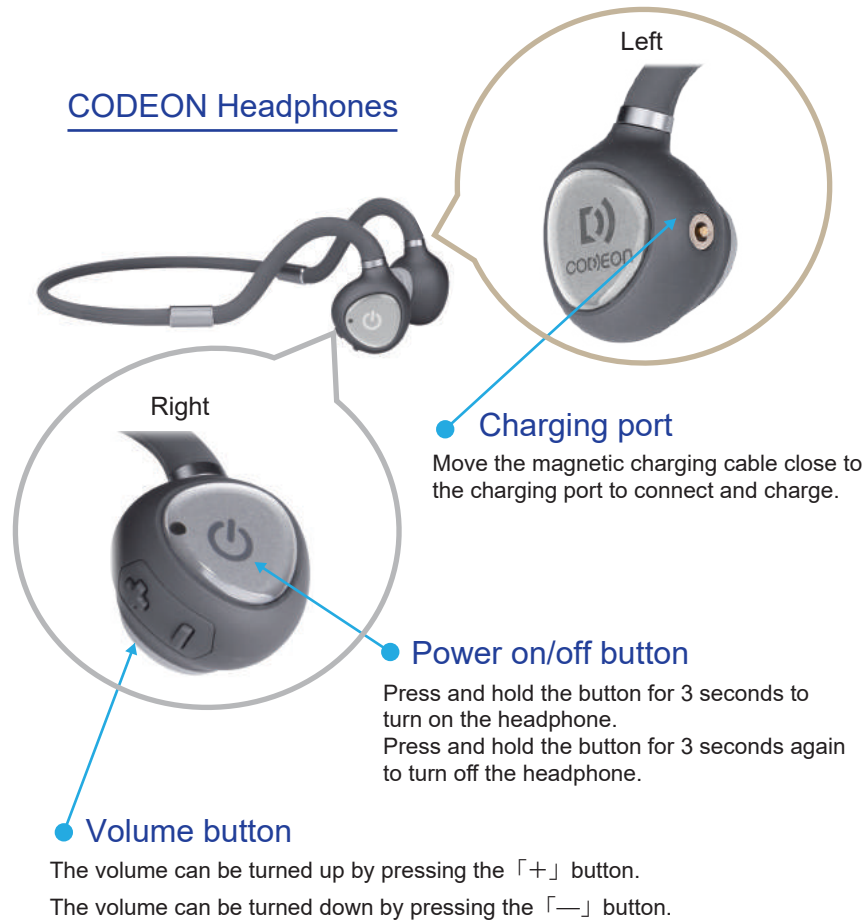


17

4. Part Names and Functions(Headphones)

Important

CODEON Headphones

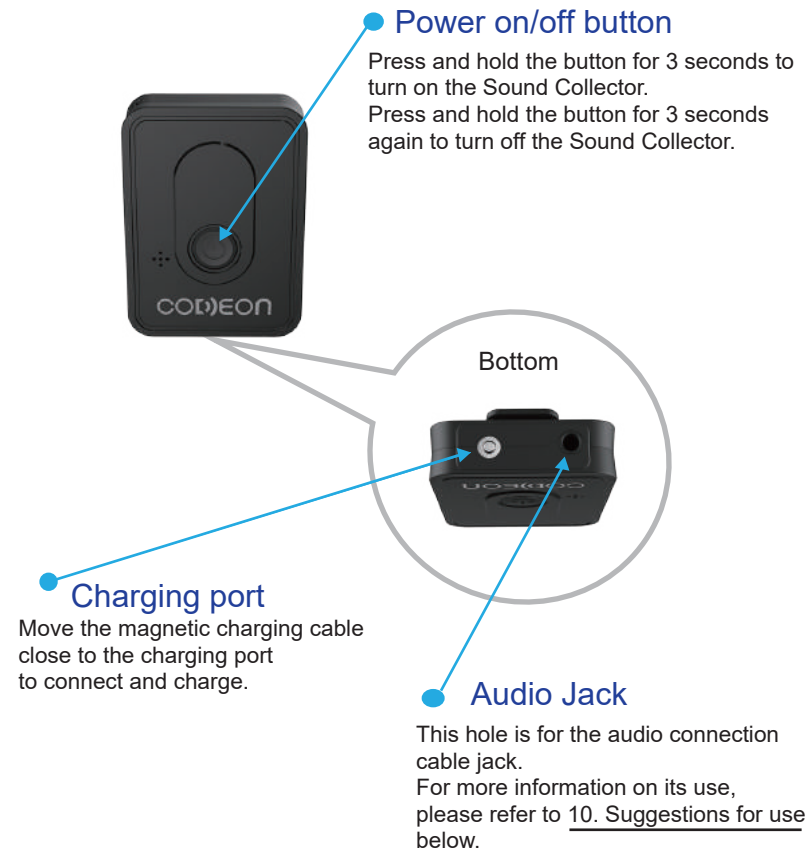


⑮

5. Part Names and Functions(Sound Collector)

Important

CODEON Sound Collector




⑯

6. Pairing the Headphone with the Sound Collector 1/2

Important


1. Headphone power switch

- **Press and hold** the power button  for 3 seconds.
- When power-up, there will be a "power on" prompt tone and the LED light will **flash blue quickly** to indicate that the device is in the pairing mode.



Press and hold the power button for 3 seconds

2. Sound Collector power switch

- **Press and hold** the power button  for 3 seconds.
- When the power is successfully turned on, the LED light will **flash blue quickly** to indicate that the device is in the pairing mode.



Press and hold the power button for 3 seconds

The wireless connection distance between headphones and Sound Collector
This product allows you to listen to the sound collected by the Sound Collector on CODEON headphones. Transmission distance: Max-range 10M (no obstructions).

20

6. Pairing the Headphone with the Sound Collector 2/2

Important

3. Wait for about 10 to 30 seconds to complete the pairing.



- The time between standby and successful connection is **about 10-30 seconds**. The CONDEON headphones will give a "connected" prompt tone. The LED light of the CONDEON headphones will change from **flashing rapidly** to **flashing blue every 3 seconds**.
- The LED light of the Sound Collector will change from **flashing rapidly** to **flashing blue every 3 seconds**.



Pairing is completed when the indicator light flashes every 3 seconds.

※ On the next pairing, the pairing action will be completed more quickly.

■ Turn off the power when you have finished using it.

- **Press and hold** the power button  of Sound Collector for 3 seconds to turn it off. The LED light will also **be off** when the power is turned off.
- When the Sound Collector is turned off, the headphones will prompt "disconnected".
- **Press and hold** the headphone power button  for 3 seconds and the headphones will be turned off.
- When headphones are turned off, there will a prompt tone "power off". The LED light of the headphones will also **be off**.

If the pairing action failed, please refer to the following operations.

- Please turn off the power of headphones and Sound Collector and repeat steps 1. to 3. Also, please wait for a period of time in pairing standby state (LED fast flashing).
- It is possible that the Headphones or Sound Collector has low battery. Please charge the battery as described in 9. "Charging Method" and repeat steps 1. to 3.

21

7. Instruction for Use

- ① Pair the CODEON headphones with the Sound Collector successfully (wireless connection).
- ※ For more information about pairing, please refer to 「6. Pairing the headphone with the Sound Collector」
- ② Hold the headphone in your hand and put it on from the back of your head so that the bone conduction pad is near the ear canal.
- ③ After wearing successfully, please adjust the position of the pad so that it is in the optimal position to hear the sound from the bone conduction headphone.
- ④ Volume can be adjusted by using the volume buttons at the bottom of the right side.
「+」 button is used to turn up the volume
「-」 button is used to turn down the volume
※ Volume is divided into 15 levels.
- ⑤ Place the Sound Collector close to the sound source, such as near the speaker's mouth or near the TV.



Wear from the back of head



Put the Sound Collector close to the sound source (speaker).

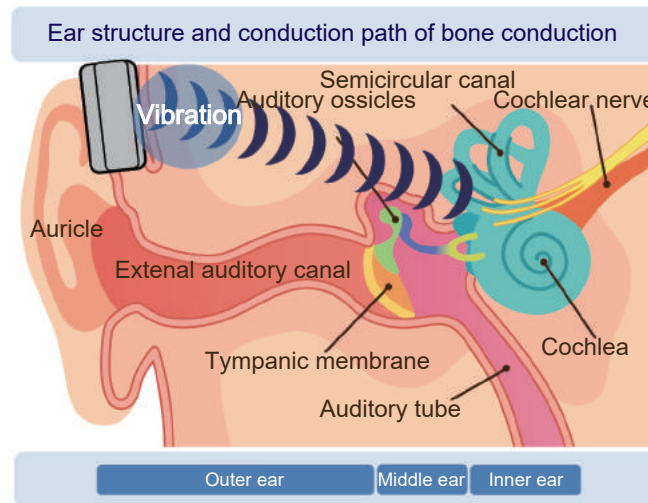
8. About Bone Conduction

Direct sound transmission to the inner ear

Provide clear hearing for people with hearing impairment (Conductive hearing loss)

"Conductive hearing loss" is a hearing loss caused by an abnormality in the ear canal, tympanic membrane or auditory ossicles that prevents sound from traveling properly. This is why bone conduction, **which transmits sound directly to the inner ear**, can be so effective.

In contrast, "sensorineural hearing loss" is caused by an abnormality in the inner ear, such as the cochlea or cochlear nerve, which prevents the transmission of sound signals to the brain even through bone conduction.



※ This product is not a professional hearing aid.

Some hearing loss may improve with early treatment. If you are experiencing hearing loss, we recommend that you see an ENT specialist.

9. Charging Method 1/2

Important

Charging method introduction

Plug the charging cable into the **power adapter**, and then connect the headphones as well as the Sound Collector.



Magnetic charging cable
※ Accessories



Power adapter
※ Accessories

Charging method

Put the **magnetic head** of the charging cable near the **charging port** of the headphones and the **charging port** at the bottom of the Sound Collector.

Simply bring the charging port of the product and the magnetic head of the charging cable close together to make the connection, then plug the other end of the charging cable into the **power adapter**, and put the power adapter into the socket on the wall.

Left side of the headphone



Bottom of Sound Collector



②④

9. Charging Method 2/2

Important

Charging

- When charging starts, the indicator light on the charging cable will be red.



The light on the charging cable is on.

Charging is completed (fully charged)

- When the product is fully charged, the indicator light will be off.



Light on the charging cable is off.

When the battery level is zero, the time to fully charge the headphones and Sound Collector is about 1.5 hours for each.

※ This product does not need to be fully charged to be used.

②⑤


10. Suggestions for Use ①

Listening to the sound of TV by bone conduction

1. Place the Sound Collector next to a TV.



2. Using an audio cable to connect the Sound Collector to the TV.

 **Audio cable:** used to connect a TV, radio, computer and other devices.



Connecting the Sound Collector to TV

※ Connecting the Sound Collector with the audio connection cable to a TV allows you to hear the sound of the TV more clearly than placing the Sound Collector near the TV.

You can listen to the sound of TV through bone conduction and adjust the volume to a comfortable level by using the volume buttons on the headphone to **enjoy TV at the same volume level as the family.**

If you want to have a clearer sound of TV, **you can put the earbuds in the accessories into your ears** and feel the bone conduction sound more clearly.

The same effect can also be achieved with a radio and a computer.



②6

It will be a very good choice for people who say "TV is too loud!"

11. Suggestions for Use ②

Use in communication

1. When chatting one to one

The speaker holds the Sound Collector, and the user will hear very clearly with the headphones, even if it is worn on the chest.



Put the Sound Collector close to the sound source (speaker).

2. When chatting with to a lot of people at home, place the Sound Collector close to them. (On top of the table, etc.)



Use with a smartphone

Bluetooth connection between smartphone and CODEON headphones



Any Bluetooth-enabled device, such as a smartphone or computer, can be connected to the CODEON headphones via Bluetooth.

Music and videos can be enjoyed using the bone conduction headphones, just like using regular Bluetooth headphones.

In addition, because there is a microphone inside the CODEON headphones, **you can talk using the microphone.**

- Tap the power button: Answer the call
- Tap the power button during a call: End the call

※ The Sound Collector cannot be used when CONDEON headphones are connected to a Bluetooth compatible device. Please turn off the power of the Sound Collector .

※ When you use the Sound Collector again, please unpair it with other Bluetooth compatible devices or turn off Bluetooth of that device. If you do not unpair or turn off the device, priority will be given to the last Bluetooth device because the Bluetooth information of that device has been saved.

②7

12. Product Specifications

Headphones

Product Name : CODEON

Frequency response : 100Hz-18,000Hz

Communication method : Bluetooth 5.0

Charging time: About 1.5 hours

Water resistance: IPX-6 (life water resistance)

Endurance: About 6 hours of continuous use

※ In the case of use at volume level 10.

Charging mode: DC 5V magnetic

Weight : 30g



Sound collector

Charging time : About 1.5 hours

Endurance: About 8 hours of continuous use

Charging mode: DC 5V magnetic

Weight : 25g

Transmission distance: Max-range 10 meters (no obstructions)

※ The sound collector is not waterproof



※ Specifications and appearance are subject to change due to improvement without further notice.

13. Warranty

Important

■ Warranty Contents

During the warranty period, in case of failure or damage during normal use in accordance with the precautions in the operating instructions (Only applicable to the main part of the product, excluding accessories, batteries and other consumables), the product will be repaired or replaced without charge according to the contents of this manual.

■ Not applicable

The following circumstances are not covered by the warranty.

1. The warranty period has expired.
2. The warranty card and the defective or broken product cannot be provided.
3. The warranty card does not contain or is not accompanied by the specified information (dealer, date of purchase, customer information, etc.).
4. The warranty card is found to be forged or altered.
5. The product has been modified, disassembled or repaired by a third party or customer other than the Company or its designated organization.
6. Product failure caused by a shock or drop during transportation or storage after the purchase of the product.
7. Failure or damage caused by connection or combination with equipment other than that specified by us.
8. Failure or damage caused by temperature, humidity, vibration, and submersion, etc. beyond the range of the normally envisioned use environment.
9. The product is not used in accordance with the instructions in the operation manual.
10. Malfunction or damage caused by not observing the precautions described in the operating instructions.
11. Repair or replacement is requested for functions and qualities not described in the operating instructions.
12. Failure or damage caused by natural wear and tear or natural deterioration of the product's wearing parts.
13. Failure or damage caused by external factors such as earthquake, fire, lightning, wind, flood or other natural disasters, pollution or abnormal voltage.
14. In addition to the foregoing, the cause of the failure or damage is deemed to be caused by the use of the customer
15. Failure or damage caused by other causes that are not recognized as such.

14. Disclaimer

Important

- We are not responsible for any damage caused by not following the instructions in this manual.
- We are not responsible for any incidental or indirect damages (loss of business profits, business interruption, data loss) caused by the use of this product.
- This warranty is valid only in Japan and does not apply to the use of this product outside of Japan.



Important

FCC Statement

This equipment has been tested and found to comply with the limits for a Class B digital device, pursuant to part 15 of the FCC Rules. These limits are designed to provide reasonable protection against harmful interference in a residential installation. This equipment generates, uses and can radiate radio frequency energy and, if not installed and used in accordance with the instructions, may cause harmful interference to radio communications. However, there is no guarantee that interference will not occur in a particular installation. If this equipment does cause harmful interference to radio or television reception, which can be determined by turning the equipment off and on, the user is encouraged to try to correct the interference by one or more of the following measures:

- Reorient or relocate the receiving antenna.
- Increase the separation between the equipment and receiver.
- Connect the equipment into an outlet on a circuit different from that to which the receiver is connected.
- Consult the dealer or an experienced radio/TV technician for help.

Caution: Any changes or modifications to this device not explicitly approved by manufacturer could void your authority to operate this equipment.

This device complies with part 15 of the FCC Rules. Operation is subject to the following two conditions: (1) This device may not cause harmful interference, and (2) this device must accept any interference received, including interference that may cause undesired operation.

RF Exposure Information

The device has been evaluated to meet general RF exposure requirement. The device can be used in portable exposure condition without restriction.