

TB30B Smart curtain kit User manual

Please read this manual carefully before using the product!

Edition:1.0

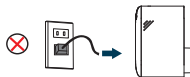
Cautions



No entry into water



Do not disassemble



Do not plug in before completing installation



After installation, do not forcefully pull the curtain



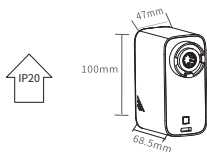
Do not strike, collide and fall



Use after firmly installing

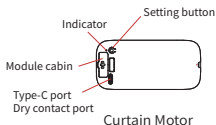
Functions

Soft start(**Cancelable**)+stop when blocking + electric stroke +slow start and stop + overtime protection+ remote control + reset + reverse setting+speed regulation +Dry contact(**optional**) + Tuya/Smartlife control(**optional**)



Rated voltage: AC100-240V 50/60Hz
Working temp: -5°C~45°C
Rated Power: 28W
Rated torque: 1.8N·m
Noise: <35dB
Rated speed: 9.4 cm/S
Rated revolution : 62 r/min
Overtime protection: 3min
Protection grade: IP20
Insulation class: E
Remote: 433.92Mhz
Wi-Fi/Zigbee: 2.4GHz
APP: Tuya smart/Smartlife

Profile & Wiring



Curtain Motor



AC Power cable

Module plug-in design



Standard interface and specifications



Easy to switch to other modules



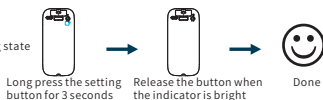
Hot-swap and Fast plug-in




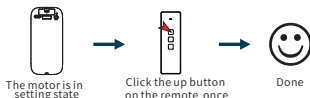
Secondary development and customization

Settings

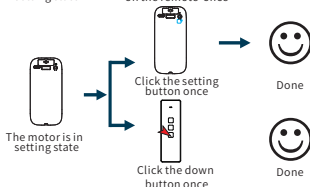
Enter the setting state





The setting state goes out within 10 seconds if there is no other operation !

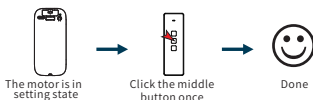


Reverse Settings



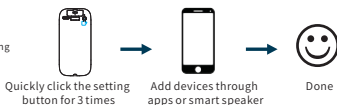

● It is effective only when the remote in use has been learned!
● The working direction of all the controls will be reversed after setting!

Soft start

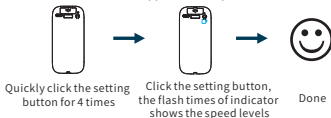




It is effective only when the remote in use has been learned!

Motor networking



Speed setting




● The indicator goes out in 6 seconds automatically if there are no more operations.
● 3 levels are settable.
● Default speed level is 2.

Reset (Clear Code)



Smartlife (Wi-Fi)

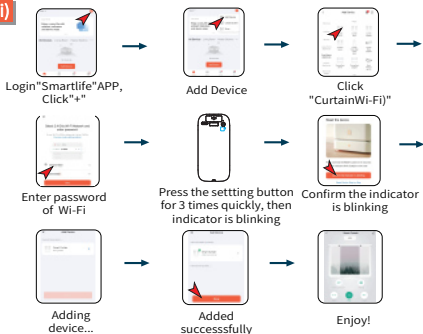


Optional function

Control by Google assistant or Amazon Alexa after bounding the ID with Google or Alexa.



Scan and get Smartlife



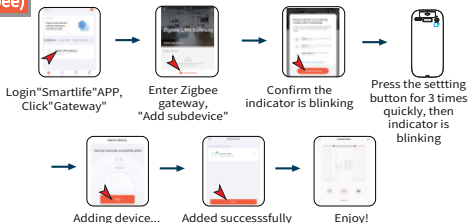
Smartlife (Zigbee)



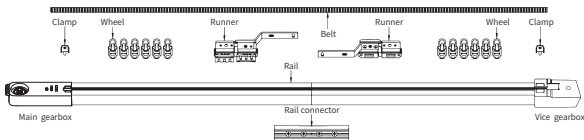
Optional function

● Make sure the Zigbee gateway has added in the APP.

● Control by Google assistant or Amazon Alexa after bounding the ID with google or Alexa.

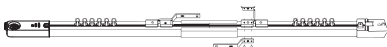


Rail exploded view

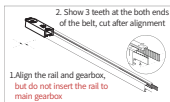


Rail assembling

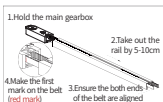
Cutting dimension of rail=Total length-Main gearbox 145mm-Vice gearbox 71mm



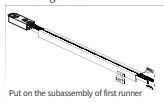
- 1, Pass the belt through main gearbox



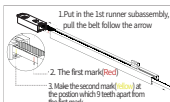
- 2,Cut the belt



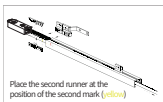
- 3, Make the 1st mark on the belt



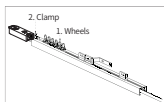
- 4, Place the first runner



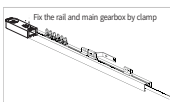
- 5, Make the second mark



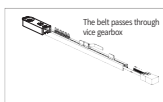
- 6, Place the second runner



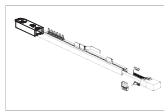
- 7, Place the wheels and clamp



- 8, Fix the main gearbox



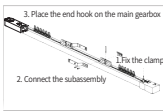
- 9, Place the vice gearbox



- 10, Put on the subassembly of the first runner



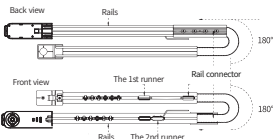
- 11, Place the wheels and clamp



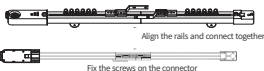
- 12, Fix the first runner and complete the assembling

Guidance for pre-assembly rail

- 1, Open the box



- 2, Join the rails by connector



- 3, Connect and fix the first runner on the rail



- 4, Put on the ceiling brackets and complete the assembling



FCC Statement

This device complies with part 15 of the FCC rules. Operation is subject to the following two conditions: (1) this device may not cause harmful interference, and (2) this device must accept any interference received, including interference that may cause undesired operation.

Changes or modifications not expressly approved by the party responsible for compliance could void the user's authority to operate the equipment.

NOTE: This equipment has been tested and found to comply with the limits for a Class B digital device, pursuant to part 15 of the FCC Rules. These limits are designed to provide reasonable protection against harmful interference in a residential installation. This equipment generates uses and can radiate radio frequency energy and, if not installed and used in accordance with the instructions, may cause harmful interference to radio communications. However, there is no guarantee that interference will not occur in a particular installation. If this equipment does cause harmful interference to radio or television reception, which can be determined by turning the equipment off and on, the user is encouraged to try to correct the interference by one or more of the following measures:

- Reorient or relocate the receiving antenna.
- Increase the separation between the equipment and receiver.
- Connect the equipment into an outlet on a circuit different from that to which the receiver is connected.
- Consult the dealer or an experienced radio/TV technician for help.

The device has been evaluated to meet general RF exposure requirement. The device can be used in mobile exposure condition without restriction.

To maintain compliance with FCC' s RF Exposure guidelines, This equipment should be installed and operated with minimum distance between 20cm the radiator your body: Use only the supplied antenna.