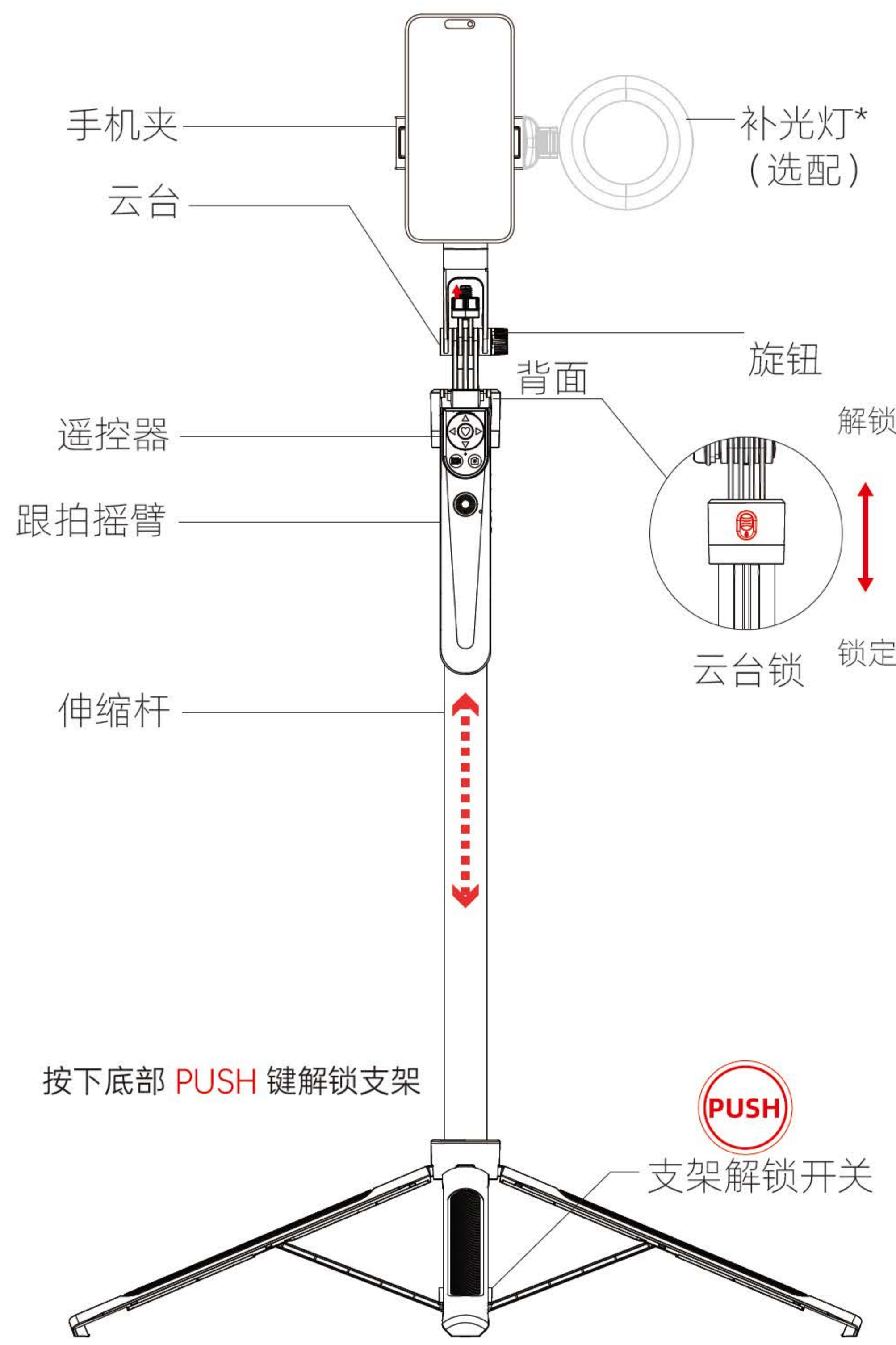


智能跟拍自拍杆

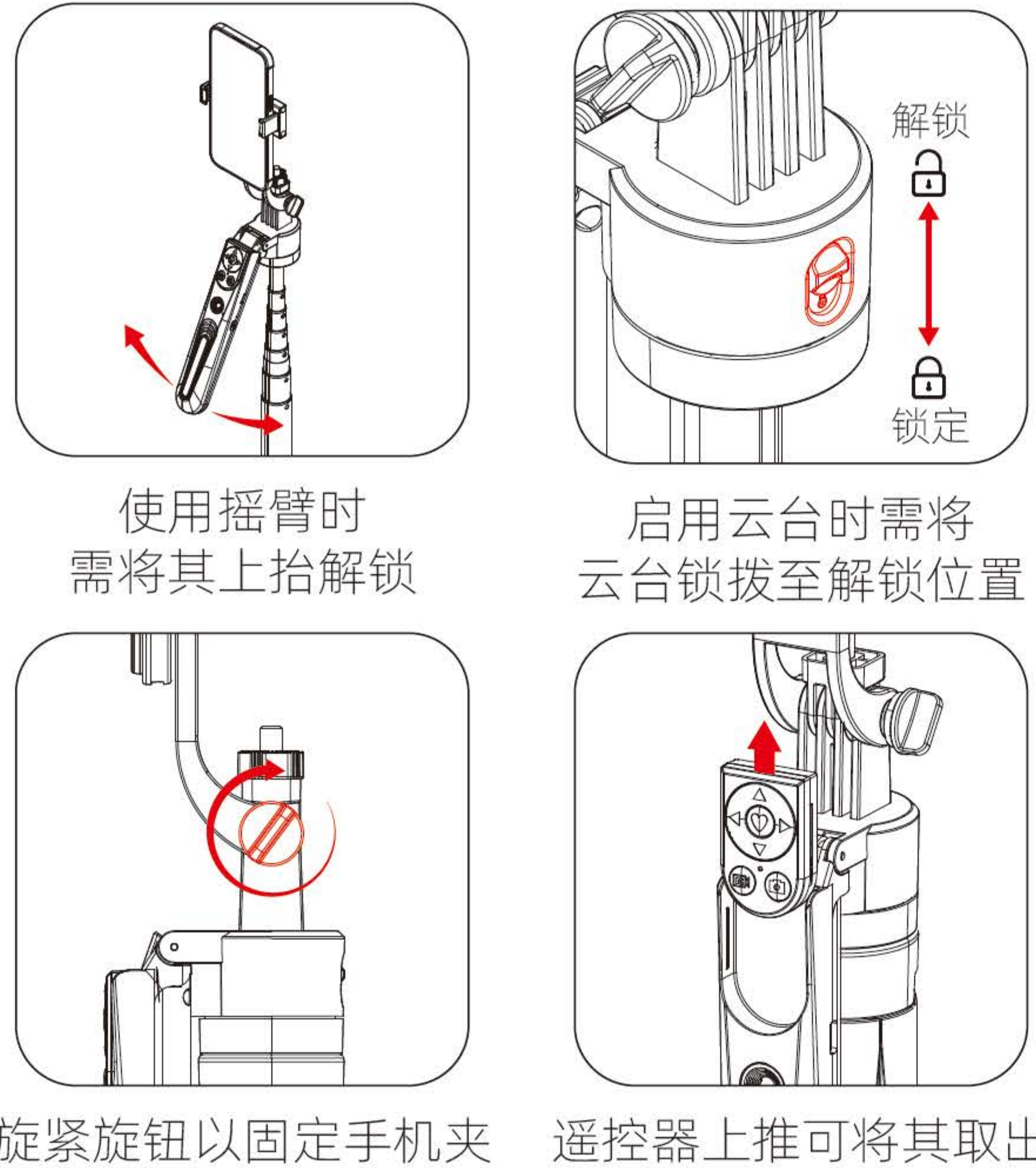


R12系列产品使用说明书

产品介绍



产品介绍

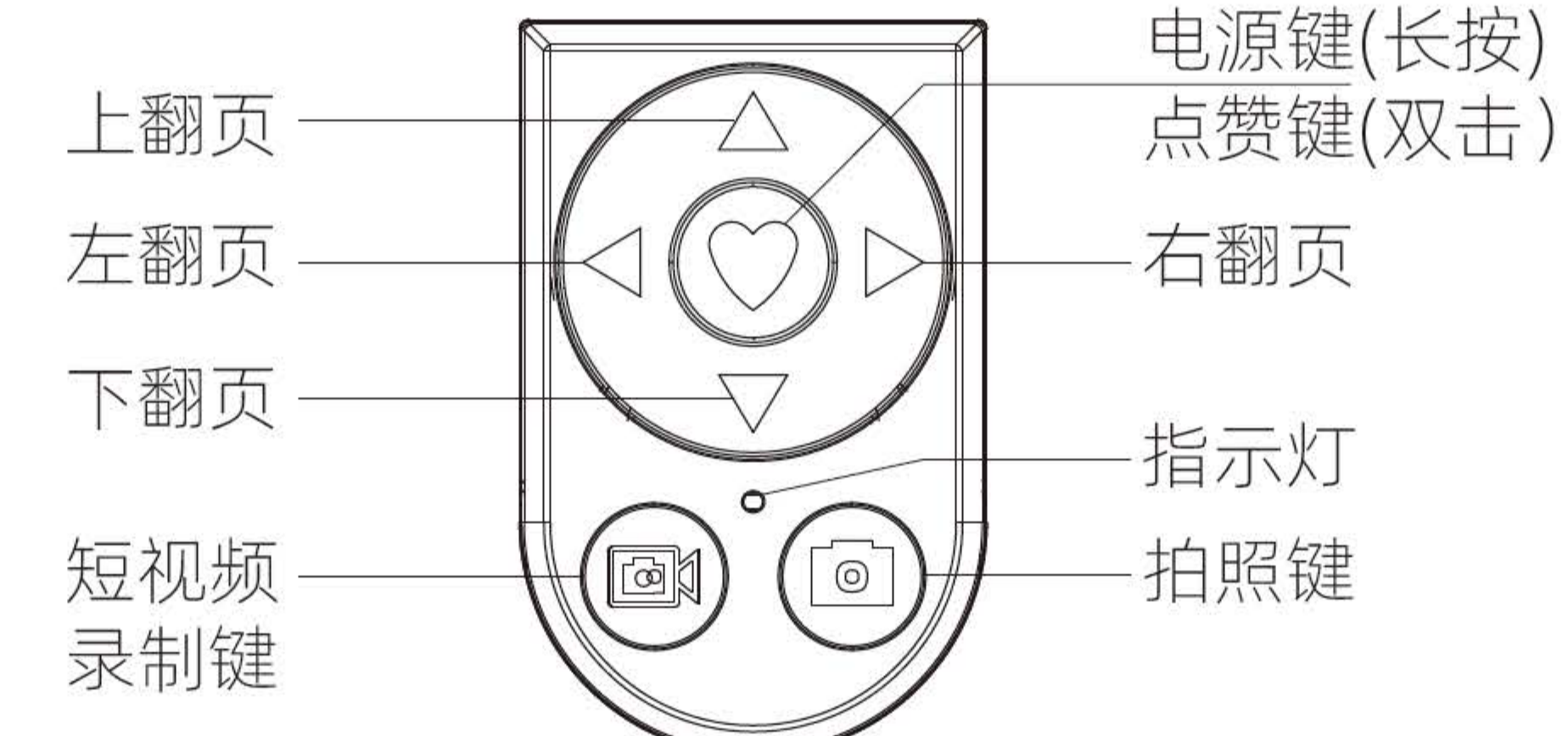


操作教程



[扫描二维码获取使用教程]

蓝牙遥控器



- 1) 使用前请先开启手机上的蓝牙功能。并在手机系统相机及各短视频APP的设置菜单中，找到**音量键功能**，并将其改为【快门】。
- 2) 长按遥控器上的电源键开机。
- 3) 当手机搜索到名为“Selfie”的蓝牙设备时，点击并选择配对。
- 4) 打开相机、短视频APP，按下遥控器功能键即可实现对应的操作。请根据您的手机类别，扫描下方对应的二维码获取详细教程。
- 5) 长按电源键约2秒关机。

遥控器使用教程

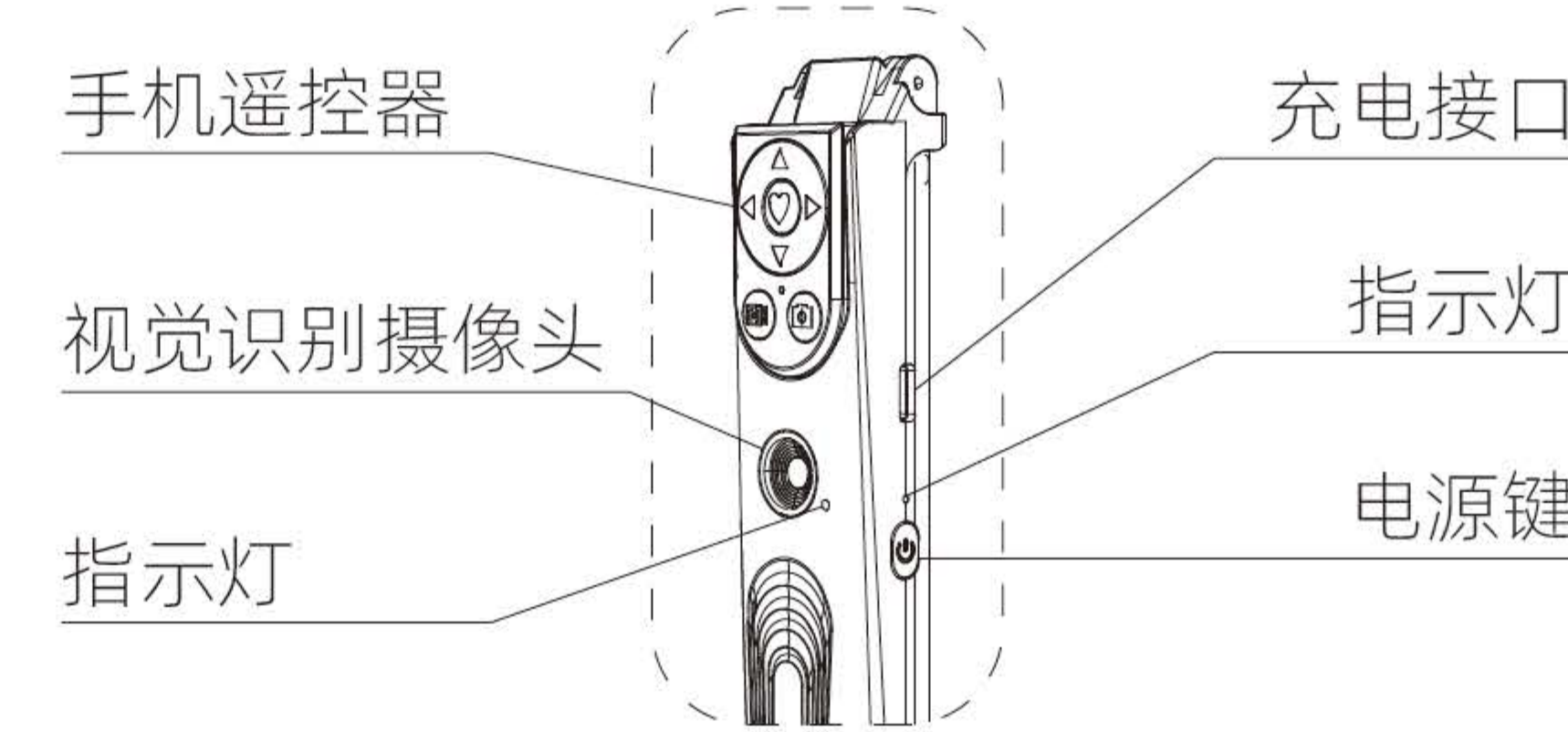


IOS 苹果手机视频教程



安卓手机视频教程

智能跟拍云台

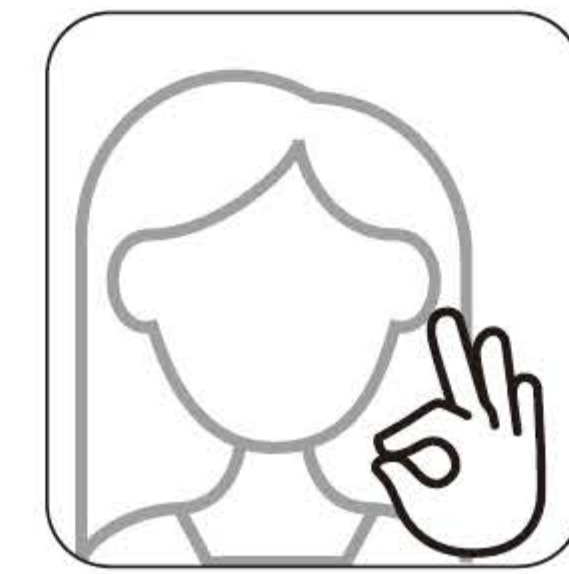


温馨提示：跟踪云台开机前请先将其解锁

- 1) 长按电源键约3S开机，即可进入智能跟随模式。
- 2) 单击电源键暂停跟随，此时指示灯闪烁。
- 3) 双击电源键慢转两圈自动停止进入跟随，慢转过程中，单击按键退出慢转。
- 4) 三击电源键快转不停，单击按键退出快转模式。
- 5) 长按电源键约3S关机。
- 6) **充电**
使用 USB 5V 适配器连接充电接口进行充电。充电时红色指示灯亮起，待指示灯变为绿色即为充电结束。
- 7) **智能手势控制**
开机状态下,将手掌靠近脸部并作出以下手势。
【手势-掌(布)】保持 2S至指示灯亮起即停止跟踪。
【手势-OK】保持2 秒至指示灯亮起即开启跟踪。



停止跟踪



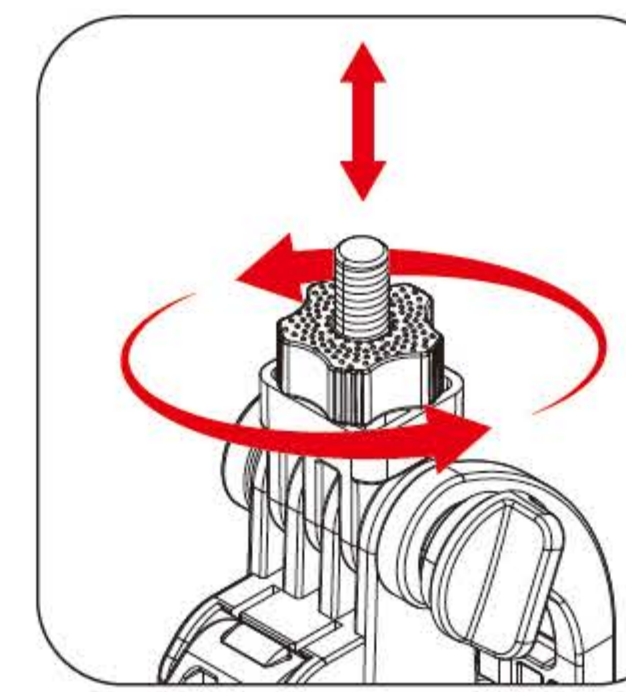
开始跟踪

补光灯 *补光灯为选配配置，请以所购买产品配置为准



- 1.电源键:单击开启灯光，再次单击切换灯光模式直至关闭电源，长按电源键切换亮度。
- 2.充电: 使用USB 5V适配器连接充电接口进行充电。
- 3.安装: 将补光灯底部两侧的圆柱对准并插入手机上的圆孔，即可将其固定。

扩展接口



将带有扩展接口的设备对准后旋入接头，此时注意留适当缝隙，再将旋钮向上旋紧，即可完成连接。
温馨提示：云台承载力有限，请勿安装过重的设备（< 500g），避免造成设备损坏。

故障排除

- 1) 蓝牙遥控器无法开机：
>>> 将遥控器进行充电，待充电完毕后重试。
- 2) 开机后蓝牙无法连接/无法正常工作：
移除手机上的蓝牙配对，重启蓝牙遥控器后重新配对连接。
- 3) 安卓手机如果无法使用遥控器拍照：
① 打开相机App，将“音量键功能”修改成默认或者快门，即可使用遥控器拍照。
② 移除手机上的蓝牙配对，重启蓝牙遥控器后重新配对连接。
- 4) 短视频APP内指针位置错位导致无法拍摄：
长按短视频键直至指示灯闪烁，通过方向键调整指针位置，按下短视频键确认后完成校正。
- 4) 跟踪目标丢失时，云台停止并指示灯闪烁，此时再次走入相机视野范围内即可。为保证识别准确性，请在距跟拍器1-3米的范围内使用。

温馨提示

- 1) 请勿将产品置于低温、潮湿环境保存。
- 2) 请勿将产品置于曝晒、火烤等高温环境。
- 3) 请勿在设备被限制的场所中使用，避免违反公共秩序。
- 4) 本产品含有细小部件，请放置于婴幼儿触摸不到的地方，防止小孩误吞。
- 5) 包装及说明书等所示图片、尺寸仅供参考，请以实物为准。

合格证

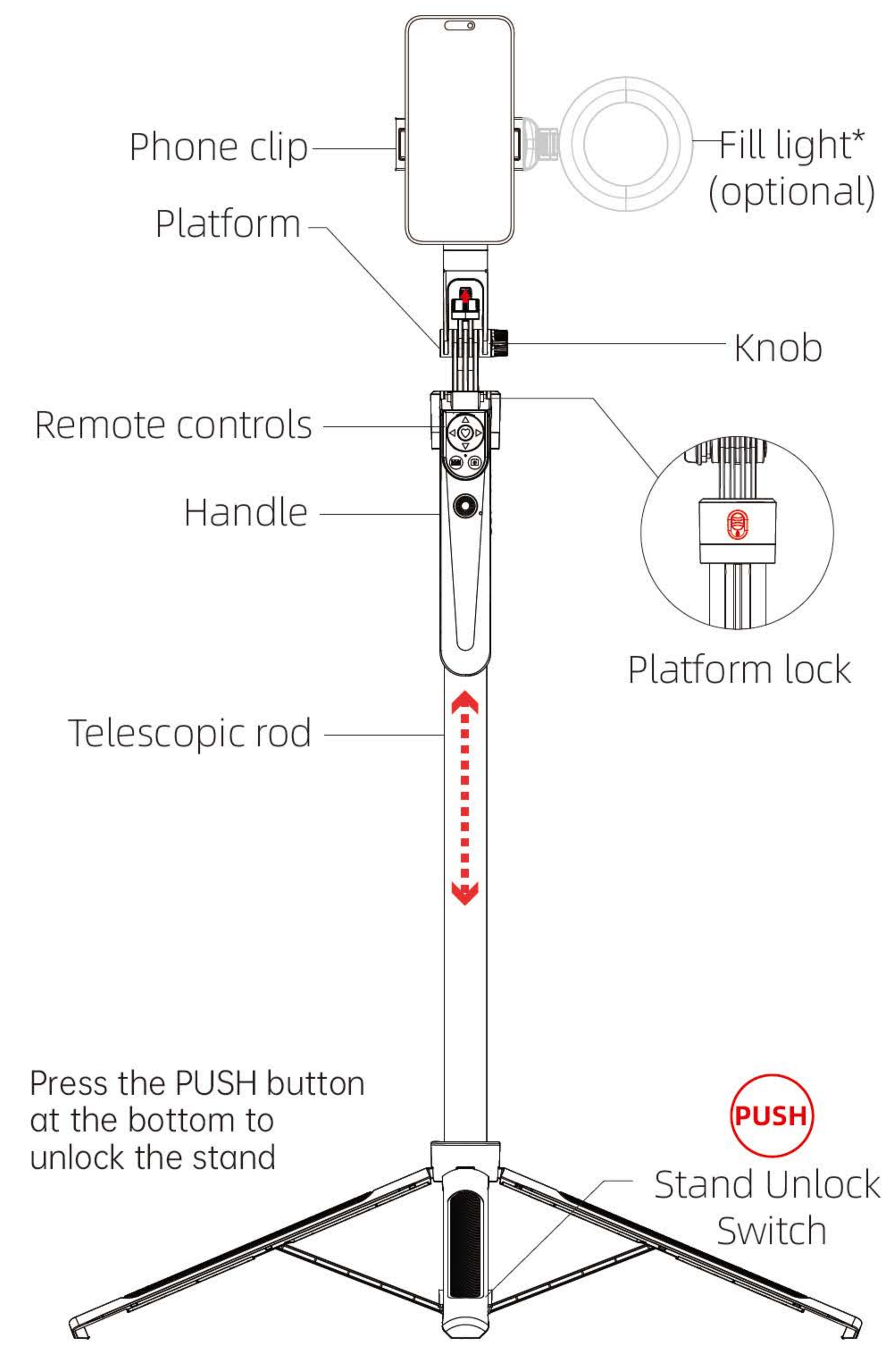
QC PAS
NO.07

INTELLIGENT TRACKING SELFIE STICK

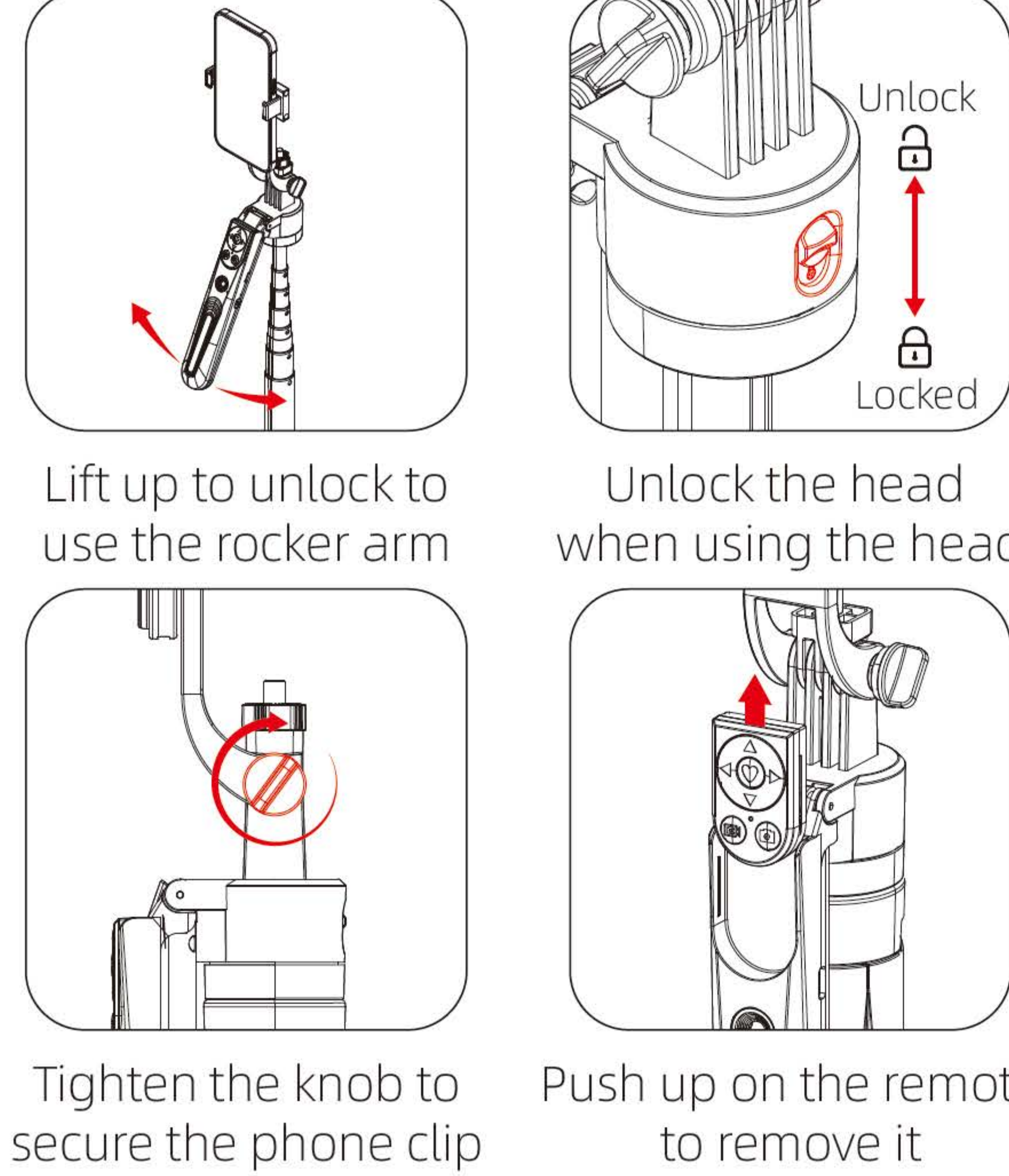


R12 SERIES INSTRUCTIONS

Directions for use

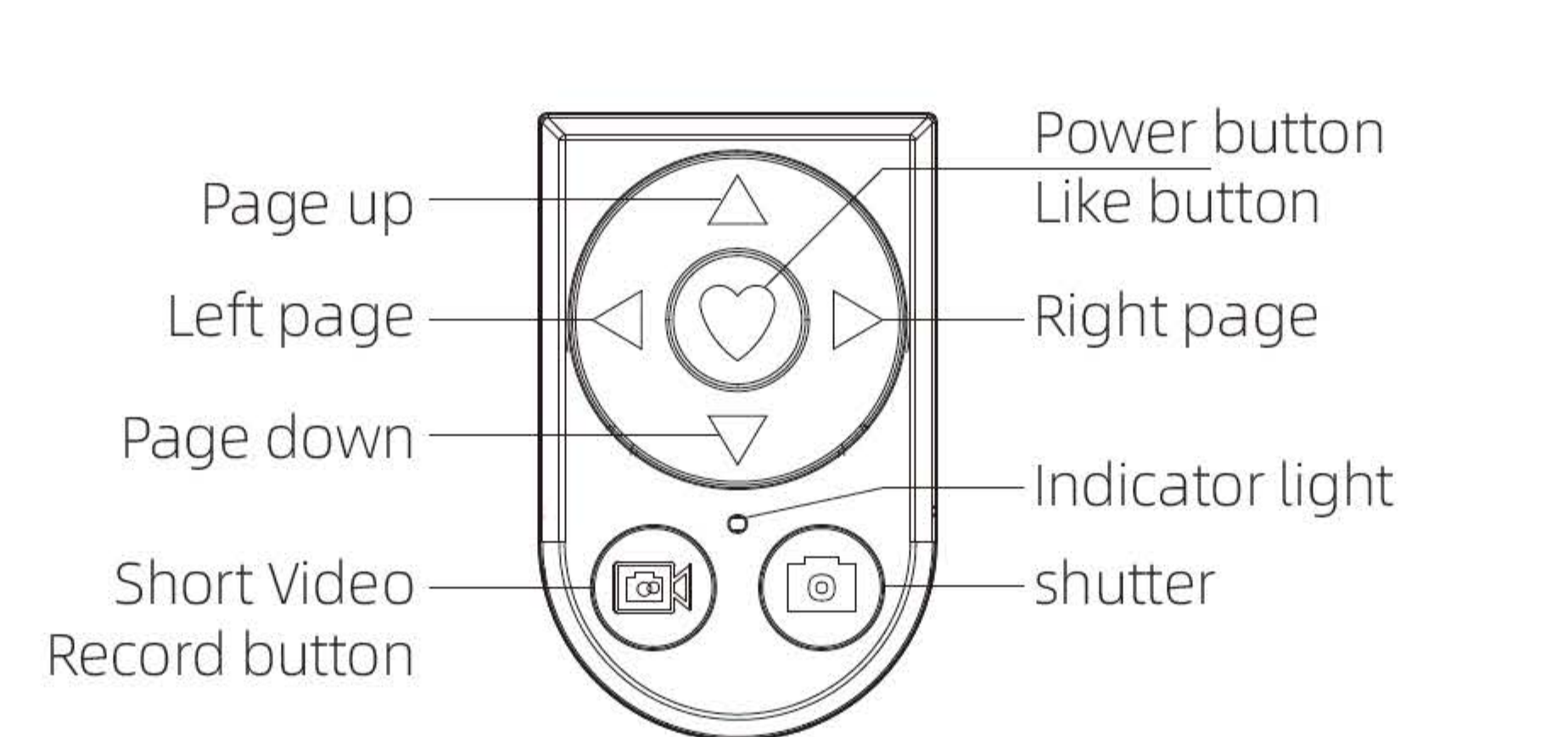


Directions for use



[Scan QR code for tutorial]

Remote Control



- 1) Please turn on the Bluetooth function on your cell phone before use.
- 2) Long press the power button on the remote control to turn on the phone.
- 3) When your phone searches for the Bluetooth device named "Selfie", click and select pairing.
- 4) Open the camera and short video APP, and press the function button of the remote control to realize the corresponding operation.
- 5) Press and hold the power button for about 2 seconds to turn off the camera.

Tips: Please scan the QR code on this manual to get the detailed tutorial according to your cell phone category.

Remote Control Tutorial



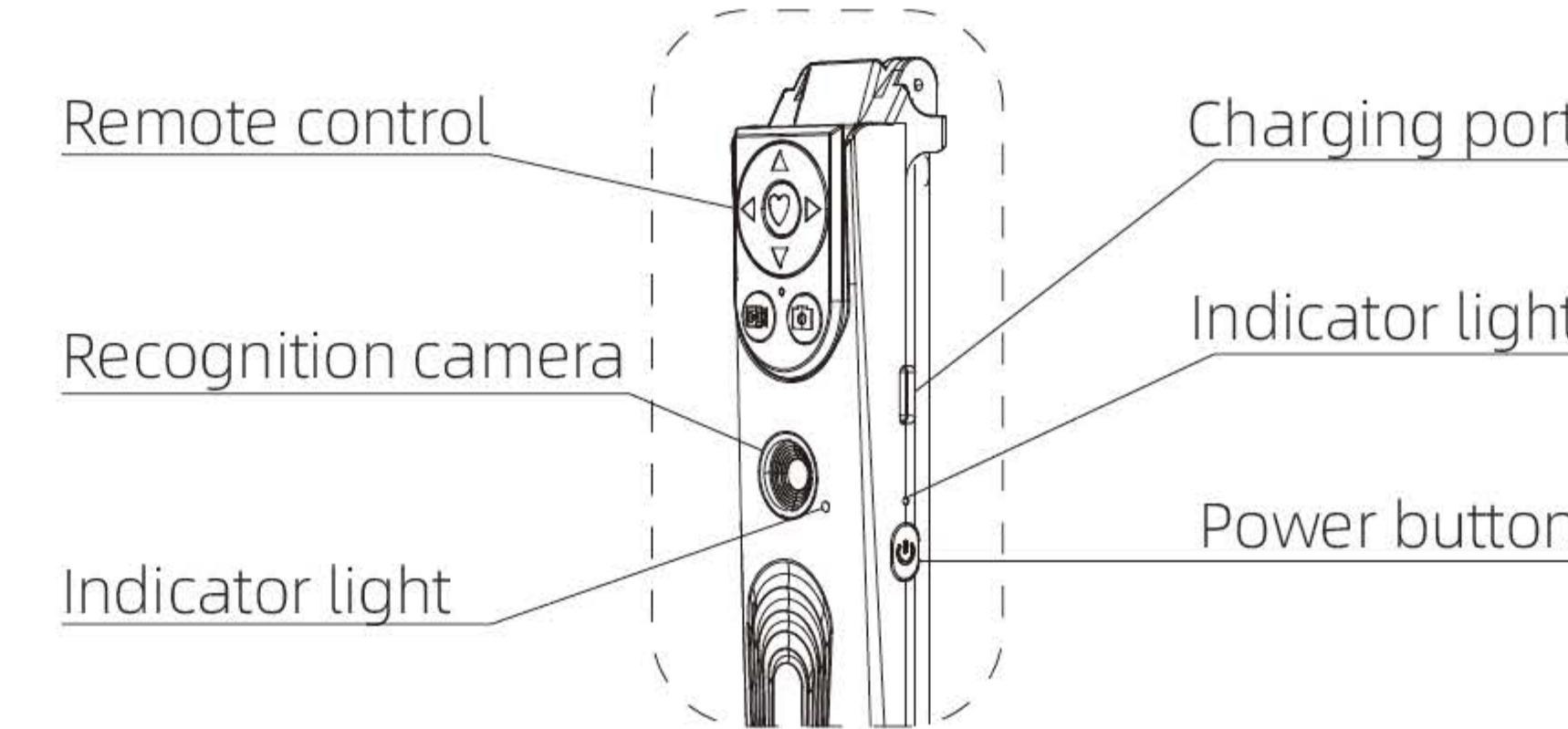
IOS

Please according to the cell phone system Scan the QR code above to get the detailed tutorial



Android

Intelligent Tracking Head



Tip: Please unlock the tracking head before turning it on

- 1) Long press the power button to turn on the power.
- 2) Click the power button to pause tracking, and the indicator light flashes.
- 3) Double-click the power button to enter the slow rotation mode, click the power button to stop. Triple-click the power button to enter the fast rotation mode.
- 4) Long press the power button to turn off the device.
- 5) **Charging**
Use USB 5V adapter to connect to the charging port for charging. When charging, the red indicator light is on;The charging is finished when the indicator light turns green.
- 6) **Intelligent Gesture Control**
With the camera on, hold your palm close to your face and make the following gestures.

[Gesture-Palm] Hold for 2S until the indicator light is on to stop tracking.
[Gesture-OK] Hold for 2 seconds until the indicator light is on to continue the tracking.

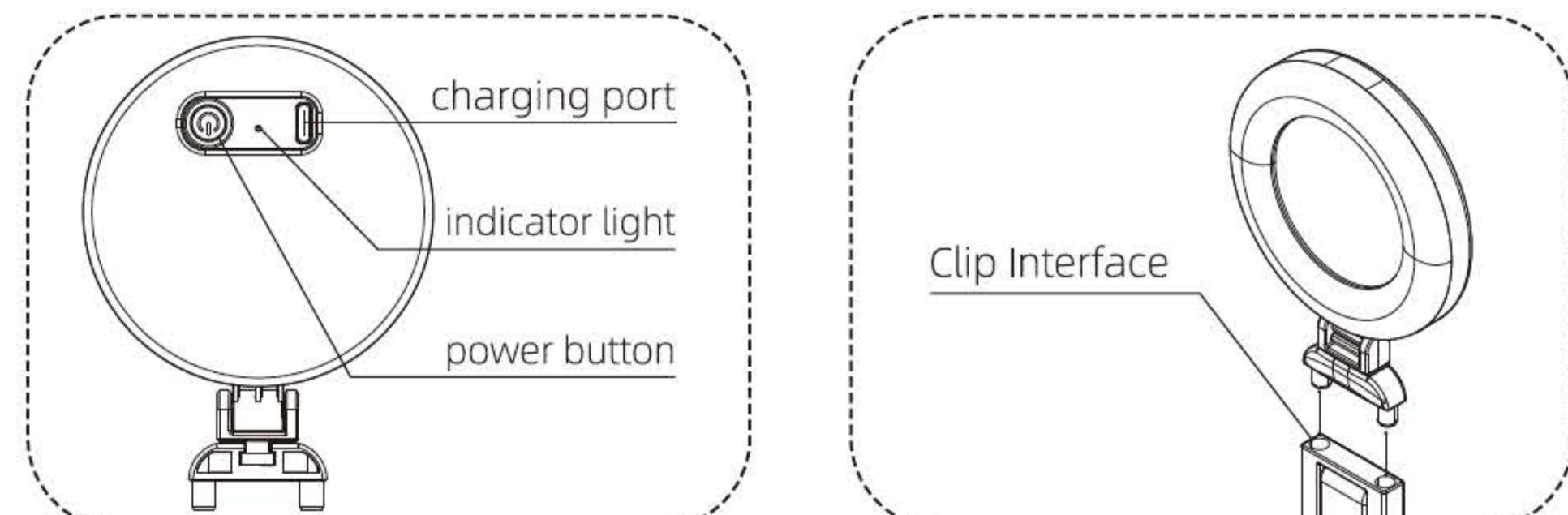


Pause



Continue

*Fill Light *The fill light is optional, please refer to the configuration of the purchased products

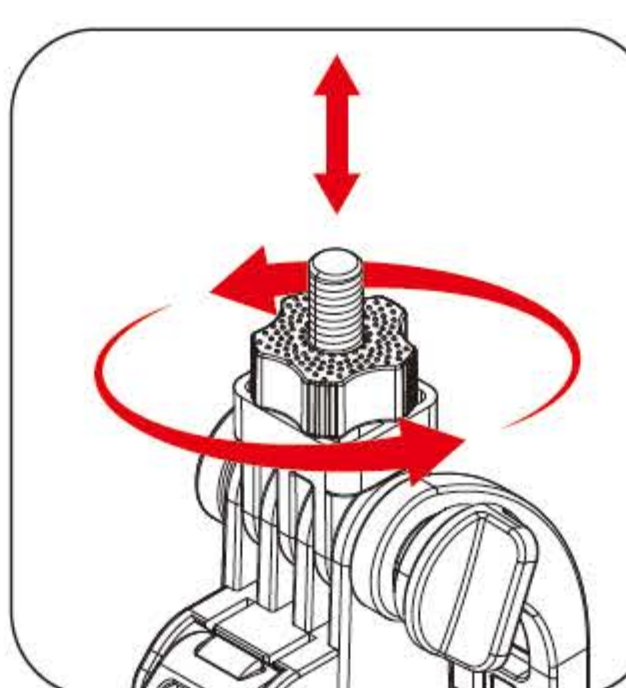


1.Power button: Click to turn on the light, click again to switch the light mode until power off, long press the power button to switch the brightness.

2.Charging: Use the USB 5V adapter to connect to the charging port for charging.

3.Installation: Align and insert the columns on both sides of the bottom of the fill-in light into the round holes on the phone to secure it.

Extended Interface



This product comes with an extendable threaded connector, align the device with the extended interface and screw it into the connector, at this time,leave a proper gap, and then tighten the knob upward to complete the connection.
Tip: The bearing capacity of the head is limited, please do not install too heavy equipment to avoid damage to the equipment.

Fault Resolution

- 1) Bluetooth remote control can not be turned on.
>>> Charge the remote control and retry after charging.
- 2) Bluetooth cannot be connected/fails to work properly after power on.
>>> Remove the bluetooth pairing on your phone, restart the bluetooth remote control and re-pair the connection.
- 3) If Android phone can't take photos with the remote control
>>> ① Press the photo button to adjust the volume: Open Camera App, change "Volume Function" to default or take photo, then you can take photo with remote control.
>>> ② Press the photo button can not adjust the volume: Follow the steps in question 2 to re-pair and connect.
- 4) When the target is lost, the gimbal stops and the indicator light blinks, then you can walk into the field of view of the camera again. To ensure the recognition accuracy, please use it within 1-3 meters from the tracker.

Note

- 1) Do not store the product in a low-temperature, humid environment.
- 2) Do not expose the product to high temperatures such as sunlight or fire.
- 3) Do not use the product in places where the equipment is restricted to avoid violating public order.
- 4) This product contains small parts, please keep it out of the reach of infants and young children to prevent them from swallowing it accidentally.
- 5) The pictures and dimensions shown on the package and manual are for reference only, please refer to the actual product.

FCC Caution:

This device complies with part 15 of the FCC Rules. Operation is subject to the following two conditions: (1) This device may not cause harmful interference, and (2) this device must accept any interference received, including interference that may cause undesired operation.

Any Changes or modifications not expressly approved by the party responsible for compliance could void the user's authority to operate the equipment.

Note: This equipment has been tested and found to comply with the limits for a Class B digital device, pursuant to part 15 of the FCC Rules. These limits are designed to provide reasonable protection against harmful interference in a residential installation. This equipment generates uses and can radiate radio frequency energy and, if not installed and used in accordance with the instructions, may cause harmful interference to radio communications. However, there is no guarantee that interference will not occur in a particular installation. If this equipment does cause harmful interference to radio or television reception, which can be determined by turning the equipment off and on, the user is encouraged to try to correct the interference by one or more of the following measures:

- Reorient or relocate the receiving antenna.
- Increase the separation between the equipment and receiver.
- Connect the equipment into an outlet on a circuit different from that to which the receiver is connected.
- Consult the dealer or an experienced radio/TV technician for help.

The device has been evaluated to meet general RF exposure requirement. The device can be used in portable exposure condition without restriction.