

Klipsch T10 ANC

User Guide



EAR Micro and Klipsch Audio have partnered to design, engineer, and produce the world's most sophisticated luxury hearables product—an ear-computer. It's like mixing the brains of a smart-watch, with the form-factor of an earphone. Our T10 ear computers are the smallest in the world, and offer the highest audio performance of any in-ear listening instrument.

EAR Micro's T10 Bespoke Ear Computers are hand-made luxury items. They are assembled entirely by artisanal craftsmen in Kansas City, MO, and are built in small-batch quantities—just like a fine Swiss timepiece—using precision ceramics and precious metals. T10 Bespoke can be accessorized and customized in an infinite number of ways to achieve individual creations as unique as their owner.



4043 Broadway
Kansas City, MO 64111
www.T10Bespoke.com

Table of Contents

- A. Getting Started
 - a. First Time Unboxing
 - b. Power On the Buds
 - c. Connecting Buds to a Phone
 - i. Pairing with an Android Phone
 - ii. Pairing with an iPhone
 - d. Power Off the Buds
- B. Charging
 - a. Opening/Closing Charger Doors
 - b. Removing/Replacing Buds
 - c. Charger User Interface
 - i. Open Door
 - ii. Button Gestures
 - d. Charging the Charger
 - i. Qi Charging
 - ii. Full Buds Battery
 - iii. Full Charger Battery
 - e. Low Charger Battery
- C. Bud Gestures
 - a. Touch User Interface
 - b. Voice, Sound, LED Feedback
 - c. Head Gestures
 - d. Voice User Interface
- D. T10 Companion Phone App
 - a. Equalization
 - i. Settings
 - ii. Set-It-And-Forget-It

Getting Started

First Time Unboxing

The T10s ear computers will be “Sleeping” packaged inside the charger. While “Sleeping” the buds use almost no power and can be awakened by pushing the button on the front of the charger.



When you press the button the LEDs above the button will light up. Your buds are awake and ready for use.

Power On the Buds

To power on the buds simply open the charger doors. The charger has “Gull-Wing” doors that hinge from the top. Hold the bottom of the door and lift up and each door will open. You can now just pull each bud from the charger.



Connecting Buds to a Phone

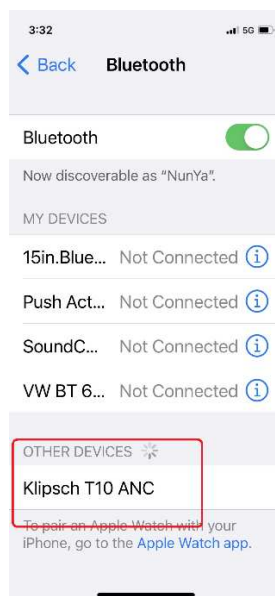
After Removing the buds from the charger, your buds will be in Pairing Mode.

Pairing with an iPhone

From your iPhone Settings screen, select Bluetooth option.

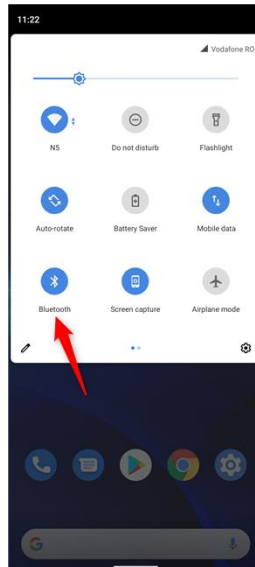


Now select “Klipsch T10 ANC” listed under Other Devices. You will hear a voice prompt that says “Now we’re talking...” and the LEDs on the buds will flash to indicate that you have successfully paired them to your phone.



Pairing with an Android Phone

Find your Bluetooth settings...it can generally be accessed by dragging the screen down from the top.



Find the “Klipsch T10 ANC” from the Available Devices section. You will probably need to select Pair from the pairing message box to complete the pairing process.

Powering Off the Buds

You can power off the buds by putting them back into the charging case. The case will charge the buds fully and then put the buds back “Sleep” to conserve the battery. To manually put the buds to “Sleep”, you can double-touch the button on the front of the charger and 3 LEDs will flash to indicate that both the buds and the charger are in “Sleep” mode.

Charging

Opening/Closing the Doors

Your T10 Charger has “Gull-Wing” doors that hinge at the top to keep your precious buds securely in place. To Open the doors simply lift the door gently from the bottom and the spring will do the rest to fully open the charger door and reveal your brand new T10s. To Close the door one finger will do. Just nudge it back closed until the magnetic closure snaps the door into the closed position.

Removing/Replacing the Buds

Once the doors are opened you can grasp the sides of the buds to remove them from the case. Be careful not to touch the Klipsch logo face as it is a touch interface and inadvertently answer a phone call, start playing music or some other function.

When putting the buds back into the charger, we recommend placing the ear tip in first and then rotating the bud to fully seat it in the charger.

After closing the both doors you will see the red LED through the window on the charger door turn off after a few seconds. The buds will charge and the charger will put them to “Sleep” when fully charged.

Charger User Interface

Open Door

Upon Opening either door the LEDs on the charger will sequence from the open door across the 5 LEDs and cycle back off to indicate the door has been opened. The LEDs will then sequence from the open door across the charger to indicate the battery level in the bud with the open door. A single LED illuminated closest to the open door indicates the bud’s battery is between 10% and 30% charged. Two LEDs means between 30% and 50%, three LEDs is between 50% and 70%, four LEDs is between 70% and 90%, five LEDs is greater than 90%. No LEDs lit means it needs to be charged.

Button Gestures

The button on the charger gives you several functions on the charger and buds while the buds are in the charger. A quick press and release of the button is what we refer to as a Touch. A Hold is where you press the button and hold it down. When holding the button down on the charger, the LEDs will Count the seconds for you as they illuminate from left to right. Once the charger has reached 5 seconds it will start back at the left LED position. The count will continue until you release the button or hold for 30 seconds.

Single-Touch

A Single Touch requests the battery level in the charger. The LEDs will sequence from the middle outward to acknowledge the button press and cycle back off. The LEDs will then sequence from the middle outward to indicate the battery level in the charger. Similar to the battery level in the buds, the LEDs indicate 10% to 30%, 30% to 50%, 50% to 70%, 70% to 90%, and above 90%.

Double-Touch

A Double-Touch will put both buds and the charger into a “Sleep” mode. This is a power saver and is particularly useful to save battery life in both the buds and the charger.

1-Second Hold

A 1-Second Hold will wake the buds from “Sleep”, allow them enter pairing mode, and attempt to pair with a previously paired phone all before removing them from the charger.

10-Second Hold

Should the need arise to reset the buds, a 10-Second Hold of the charger button with the buds in the charger and the doors closed will perform a quick reboot of the buds.

30-Second Hold

Should the need arise to reset the charger, a 30-Second Hold of the charger button will perform a quick reboot of the buds.

Charging the Charger

Qi Charging

The T10 charger can be charged with the optional wireless mini puck that is supplied by EAR Micro or most any Qi compatible wireless chargers. When the T10 Charger is properly placed on the wireless charger, the wireless Charger should have an indicator that the T10 Charger is charging. The lights on the T10 Charger will also cycle in a back-and-forth sequence to let you know the T10 Charger is charging. If using our mini puck, the light in the base of the puck will illuminate. The mini puck mates perfectly with the T10 Charger because it is contoured to the exact shape of the T10 charger. Magnets hold the mini puck and the T10 Charger in the proper alignment.

Full Bud Batteries

Any time the batteries in the buds are fully charged the charger puts the buds into “Sleep” mode to conserve the charge on the batteries. A 1-Second hold of the button on the charger will “Wake” the buds.

Full Charger Battery

When the battery in the T10 Charger has reached fully charged the back-and-forth LED sequence will halt while on the Qi wireless charger.

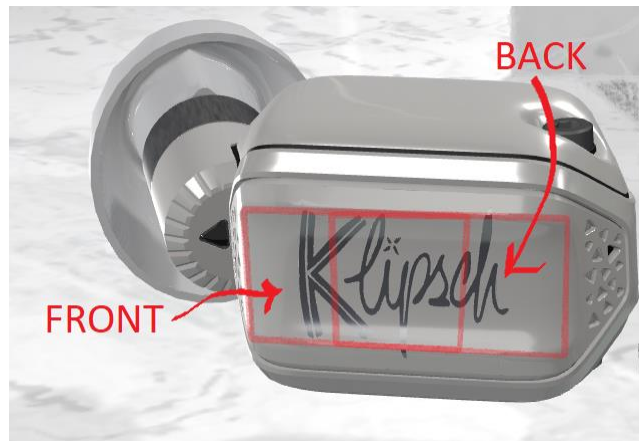
Low T10 Charger Battery

If the battery in the T10 Charger gets to a significantly low state and you haven't placed it on a Qi compatible wireless charger the T10 Charger will automatically turn off the buds and the charger to help reduce the drain on the charger battery. You can simply perform a 1-Second Hold to power the charger back on. This will provide several minutes of charging before the charger cycles off again.

Bud Gestures

Touch User Interface

The logo or face of the buds contain a touch surface that you can touch to interact with each bud. There are multiple gestures that you can perform to activate different features. The figure below shows the touch surface outlined in red. The front is closest to the ear tip for each bud.



Basic Touch Gestures

The basic gestures are Single-Touch, Double-Touch, Holds, Rocker Forward, Rocker Backward, Swipe Forward, Swipe Backward. A Single-Touch is when you place your finger on all three areas (front, middle, and back) on touch surface and then release quickly. A Double-Touch is when you touch and release twice on the three areas within 1 second. A Hold is similar to a Touch except you hold your finger for a time without moving it from the touch surface. A Rocker Forward is when you touch and release just the front area and a Rocker Backward is when you touch and release just the back area. A Swipe Forward is when you touch the back area momentarily and then slide your finger forward to the front area before releasing your touch. A Swipe Backward is when you touch the front area momentarily and then slide your finger to the back area.

Enhanced Gesture Mode

A Double-Touch will put the bud into Enhanced Gesture Mode that will pass all future gestures directly to the Companion App until another Double-Touch. A Double-Touch will Toggle this feature. This can be used to execute sophisticated actions setup in the App. This feature is coming in the future. **Be Aware When In Gesture Mode Buds Ignore All Gestures Except Double-Touch!**

Advanced Touch Gestures

The advanced gestures are Swipe-and-Hold, Touch-and-Hold, and Double-Touch-and-Hold. While advanced gestures require a bit more patience and timing to learn, they provide additional features that aren't used every day by most users. A Swipe-and-Hold begins with a Swipe either forward or backward and is followed immediately with a hold on the side that you swipe toward. For a Swipe-and-Hold Forward you swipe from the back to the front, lift your finger, and then hold the front touch area. A Touch-and-Hold starts just like a single touch but you then put your finger back on the whole touch area and hold for a number of seconds. A Double-Touch-and-Hold is just like a Single-Touch-and-Hold except you touch the face twice. The action is touch, release, touch, release, and hold. These actions from first touch to the beginning of the hold must be performed within 1 second.

The table below lists the Gesture, Bud State, and the Action that occurs when the gesture is performed.

Gesture	Not Connected	Connected	Incoming Call	Active Call
Single-Touch	-	Play/Pause Media	Accept Call	End Call
Double-Touch	Enhanced Gesture Mode On/Off	Enhanced Gesture Mode On/Off	Enhanced Gesture Mode On/Off	Enhanced Gesture Mode On/Off
Hold 2 seconds	Power On	-	Reject Call	-
Hold 5 seconds	-	Enter/Exit Music Sharing	-	-
Rocker Forward	-	Volume Up	Volume Up	Volume Up
Rocker Backward	-	Volume Down	Volume Down	Volume Down
Swipe Forward	-	Next Track	-	-
Swipe Backward	-	Previous Track	-	-
Swipe-and-Hold Forward	-	Fast Forward	-	-
Swipe-and-Hold Backward	-	Rewind	-	-
Touch-and-Hold 2 seconds	Bluetooth Pairing	Bluetooth Pairing	Bluetooth Pairing	Bluetooth Pairing
Double-Touch-and-Hold 2 seconds	Air Pairing	-	-	-
Double-Touch-and-Hold 5 seconds	Bud Reset	Bud Reset	Bud Reset	Bud Reset
Double-Touch-and-Hold 8 seconds	PDL Reset	-	-	-
Double-Touch-and-Hold 12 seconds	Power Off	Power Off	Power Off	Power Off

Voice, Sound, LED Feedback

The buds give you feedback as events occur on the buds. The following table shows the event along with the Voice Icon, Sound, and LED Pattern for each.

Event	Voice Icon	Sound	LED Pattern
Power On	Battery Level	-	-
Ready to Pair	"I'm Ready to Pair"	-	Alternating White and Red
Paired to Phone/Device	"Now We're Talking"	-	Triple Flash
Disconnected from Phone/Device	"See Ya Later, Bye"	-	-
Opening the Companion App	"Talk to Me"		
Closing the Companion App	"I'm Done Listening"		
Single-Touch	-	Medium Tone	-
Double-Touch	"Gesture Mode On/Off"	Medium Tone+Medium Tone	-
Hold 2 seconds		Low Guitar Note-	-
Hold 5 seconds	"Music Sharing On/Off"	Higher Guitar Note	-
Rocker Forward	-	High Tone	-
Rocker Backward	-	Low Tone	-
Swipe Forward	-	Low Tone+Low-to-High Swoosh	-
Swipe Backward	-	High Tone+High-to-Low Swoosh	-
Swipe-and-Hold Forward	-	Low Tone+Low-to-High Swoosh+ High Tone	-
Swipe-and-Hold Backward	-	High Tone+High-to-Low Swoosh+ Low Ton	-
Touch-and-Hold 2 seconds		Medium Tone+Medium Tone+Low Guitar Note	-
Double-Touch-and-Hold 2 seconds	-	Medium Tone+Medium Tone+Medium Tone+Low Guitar Note	-
Double-Touch-and-Hold 5 seconds	-	Higher Guitar Note	-
Double-Touch-and-Hold 8 seconds	-	Even Higher Guitar Note	-
Double-Touch-and-Hold 12 seconds	-	Highest Guitar Note	-

Head Gestures

Voice User Interface

The Voice User Interface allows you to talk to the buds to perform various actions. The Companion App must be open on your phone to enable the Voice Gestures.

T10 Companion Phone App

Features in the app are self-explanatory and will be updated from time to time.

Regulatory Compliance Information

FCC Supplier's Declaration of Conformity 47 CFR § 2.1077 Compliance Information

PRODUCT IDENTIFICATION: Ear Computer, Model T10

RESPONSIBLE PARTY:

Piearcings LLC dba EAR Micro LLC
4043 Broadway Boulevard
Kansas City, MO 64111 USA

CONTACT NAME: Patsy Nigh

TELEPHONE NUMBER AND/OR E-MAIL ADDRESS: 913.706.2216 | patsy@earmicro.com

FCC COMPLIANCE STATEMENT:

This device complies with Part 15 of FCC Rules. Operation is subject to the following two conditions: (1) this device may not cause harmful interference, and (2) this device must accept any interference received, including interference that may cause undesired operation.

THIRD PARTY TESTING:



16740 Peters Road
Middlefield, OH 44062 USA
Phone: 440.632.5541
Fax: 440.632.5542
Toll Free: 877.405.1580

RESPONSIBLE PARTY SIGNATURE:

Patsy Nigh
(signature)

Date: July 18, 2022

Name: Patsy Nigh

Title: Chief Operating Officer

Location: 4043 Broadway Boulevard
Kansas City, MO 64111



FCC ID: 2A7XIT10

This device complies with Part 15 of FCC Rules. Operation is subject to the following two conditions: (1) this device may not cause harmful interference, and (2) this device must accept any interference received, including interference that may cause undesired operation.

Note: This equipment has been tested and found to comply with the limits for a Class B digital device, pursuant to part 15 of the FCC Rules. These limits are designed to provide reasonable protection against harmful interference in a residential installation. This equipment generates, uses and can radiate radio frequency energy and, if not installed and used in accordance with the instructions, may cause harmful interference to radio communications. However, there is no guarantee that interference will not occur in a particular installation. If this equipment does cause harmful interference to radio or television reception, which can be determined by turning the equipment off and on, the user is encouraged to try to correct the interference by one or more of the following measures:

- Reorient or relocate the receiving antenna.
- Increase the separation between the equipment and receiver.
- Connect the equipment into an outlet on a circuit different from that to which the receiver is connected.
- Consult the dealer or an experienced radio/TV technician for help.

Important: Changes or modifications not expressly approved by EAR Micro could void the user's authority to operate the equipment.