

T020



User Manual

Bluetooth Waterproof Led Strip Lights

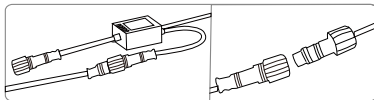


V1.0

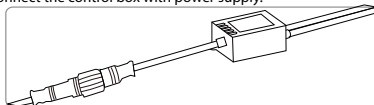
FCC ID: 2A7WU-TTGA002

How to Connect?

Step1: Connect the control box with LED light strip.



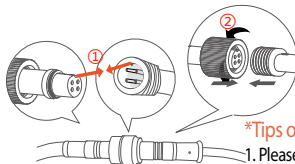
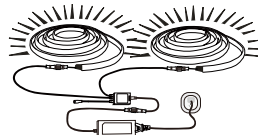
Step2: Connect the control box with power supply.



Step3: Plug in the power supply.



Or

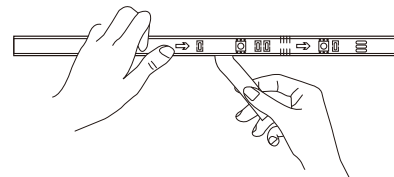


***Tips of connect the waterproof DC head.**

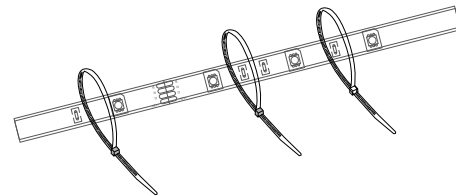
1. Please note that the groove needs to be inserted correctly during connection.
2. Screw the nut firmly to ensure the best waterproof.

Three types of installation

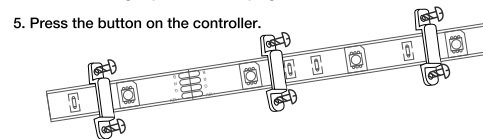
1. Wipe the surface of the wall to ensure it is dry and clean. Peel off the adhesive film on the tape, stick the strip on the installing location. Press down on the strip light repeatedly to ensure it is firmly attached.



2. Use the cable zip ties to fix the strip light.



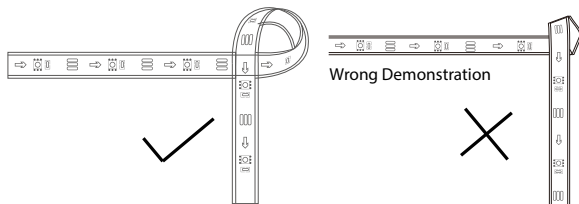
3. Use the stabilizing clip to fix the strip light.



5. Press the button on the controller.

Recommended Tip

Try to bend with a bigger radius to protect the strip light and electronic components on it.

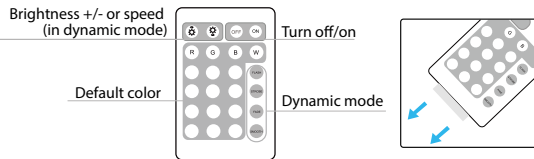


Specifications

Working temperature	-20°C ~ + 45°C
Lifespan	20000H
Waterproof	Strip Light: IP67 Control Box: IP65
Control Method	APP, Remote

REMOTE CONTROL

- One IR remote is included in package.
- Aim to the controller directly within 6 meters to ensure communication.
- There are keys for "ON/OFF/Brightness up/Brightness down/Static colors/ Dynamic Modes" and so on. Just try it.



- Please pull out the plastic chip in bottom first to power on the remote.
- You can insert the chip back when unused to get longer battery life.

Pairing Instructions

1. Download the APP and install on your phone.
2. Turn on the Bluetooth on your phone.
3. Open the APP, tap the "+" icon in the top right corner and search new device.
4. APP will show the device found, just add it.
5. Tap the device icon to enter control panel.

ATTENTION

- » Use the product with the provided power adapter and control box only.
- » Do power on test before installation.
- » Do NOT allow children to install the strip light alone.
- » Please do NOT connect more strip to the product which will cause the power adapter overload.
- » If the power supply is damaged, please do not repair it yourself, please let professional technicians handle it.
- » When the light strip is rolled, please do not light it for more than 5 seconds.
- » Please turn off the power and unplug the adapter when the strip light will not be used for a long time.
- » Keep the product away from sharp objects or strong corrosive chemicals.
- » Do not use chemical reagents during daily maintenance to avoid damage to the light strip.
- » Please contact us if you have any problem or get a defective product. We will reply within 24 hours.

Troubleshooting

- a) APP can not find the device.
 - Make sure the phone bluetooth is on.
 - Allow the permissions of APP. APP needs them to connect the device.
 - Check the strip light is on. Or use remote control to check light is working.
 - Close APP, turn off bluetooth and turn on bluetooth again, then start APP to add device again. Ensure the phone is within 1m/3.28ft of the product without obstructions when connecting. Your phone may be incompatible with the APP. Try another phone.
- b) All lights don't work.
 - Check power is on.
 - Press ON and press "brightness up" multi times on remote.
 - Connect APP and turn on light and turn up brightness.
 - Reinstall all parts.
- c) Some light beads keep off or fail working.
 - Contact our support team.

Customer Service

If you have any questions or product issues, please contact seller via the email on the package or get the product support on the order page in your purchasing account.

All messages will be replied within 24 hours.

FCC Warning

This device complies with part 15 of the FCC rules. Operation is subject to the following two conditions: (1) this device may not cause harmful interference, and (2) this device must accept any inte rference received, including interference that may cause undesired operation.

Changes or modifications not expressly approved by the party responsible for compliance could void the user’s authority to operate the equipment.

NOTE: This equipment has been tested and found to comply with the limits for a Class B digital device, pursuant to part 15 of the FCC Rules. These limits are designed to provide reasonable protection against harmful interference in a residential installation. This equipment generates uses and can radiate radio frequency energy and, if not installed and used in accordance with the instructions, may cause harmful interference to radio communications. However, there is no guarantee that interference will not occur in a particular installation. If this equipment does cause harmful interferenceto radio or television reception, which can be determined by turning the equipment off and on, the user is encouraged to try to correct the interference by one or more of the following measures:

- Reorient or relocate the receiving antenna.
- Increase the separation between the equipment and receiver.
- Connect the equipment into an outlet on a circuit different from that to which the receiver is connected.
- Consult the dealer or an experienced radio/TV technician for help.

Radiation Exposure Statement

This equipment complies with FCC radiation exposure limits set forth for an uncontrolled environment. This equipment should be installed and operated with minimum distance 20cm between the radiator and your body.