

# User Manual

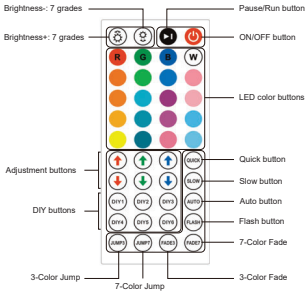
## Permanent Outdoor Eaves Light



TIPS: Test the lights before installing. Check each lamp bead. Contact us if defect.

V1.0

### Remote Control



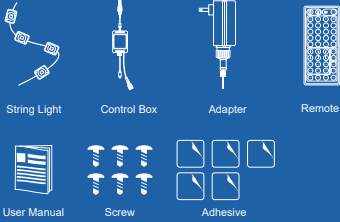
#### Key Explanation

- Auto button: Automatically change colors under Jump 3, Jump 7, Fade 3, Fade 7 and Flash modes.
- DIY buttons: 6 DIY buttons remember colors you set.
- Adjustment buttons: Increase/Decrease red, green and blue colors.

### QUICK INSTALLATION GUIDE

#### Step 1

Check the contents of the box and contact us if anything is missing.



#### Step 2

Connect the two wires in the direction of the arrow and tighten the waterproof cap.



#### Step 3

Plug it into a power outlet and check if the lights are working properly.



#### Step 5

Please prepare a ladder and ensure that it is stable enough. You should also have someone else assist you. Do not install lighting fixtures in rainy or hot weather to avoid accidents.



#### Step 7

Remove the adhesive tape from the back of the light. Press the light firmly against the surface for more than 5 seconds.



#### Step 4

Download the DayBetter app from the App Store or Google Play.



#### Step 6

Clean the surface. It is recommended to install the string lights vertically, 2 to 4 inches away from the wall, for better lighting effects.



#### Step 8

Use screws to secure the string lights to the eaves for long-term use.

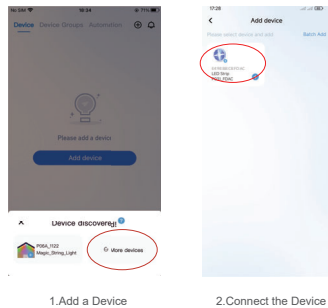


## Specifications

Input Voltage	120V
Work Voltage	24V
Control Methods	APP/Remote Control
IP Level	IP65

-4-

## APP Connect Method



1.Add a Device

2.Connect the Device

**Tips:** Turn on bluetooth on your smart phone before connecting  
The app is constantly being updated, and pages may be adjusted. Please refer to the actual display.

-5-

## Trouble Shooting

- a) APP can not find the device.**
- Make sure the phone bluetooth is on.
  - Allow the permissions of APP. APP needs them to connect.
  - Check the light is on.
  - Kill APP, turn off bluetooth and turn on bluetooth again, then start APP to add device again.
  - Ensure phone within 4ft from product when connecting.
  - Your phone may be incompatible with the APP, try another phone
- b) All lights don't work.**
- Check power is on.
  - Press ON and press "brightness up" multi times on remote.
  - Connect APP and turn on light and turn up brightness.
  - Reinstall all parts.
- c) Some light beads keep off or fail working.**
- Contact our support team.

Note: This product does not support Alexa or Google Assistant.

### Attention

- Use the product with provided adapter and control box only.
- Do NOT extend more string light to avoid overload which is unsafe.
- Please turn off the power and unplug the adapter when the string light will not be used for a long time.

### Customer Service

If you have any questions or product issues, please contact us via the email on the package or get the product support on the order page in your purchasing account. All messages will be replied within 24 hours.

-6-

## FCC Statement

This equipment has been tested and found to comply with the limits for a Class B digital device, pursuant to part 15 of the FCC Rules. These limits are designed to provide reasonable protection against harmful interference in a residential installation. This equipment generates, uses and can radiate radio frequency energy and, if not installed and used in accordance with the instructions, may cause harmful interference to radio communications. However, there is no guarantee that interference will not occur in a particular installation. If this equipment does cause harmful interference to radio or television reception, which can be determined by turning the equipment off and on, the user is encouraged to try to correct the interference by one or more of the following measures:

- Reorient or relocate the receiving antenna.
- Increase the separation between the equipment and receiver.
- Connect the equipment into an outlet on a circuit different from that to which the receiver is connected.
- Consult the dealer or an experienced radio/TV technician for help.

Caution: Any changes or modifications to this device not explicitly approved by manufacturer could void your authority to operate this equipment.

This device complies with part 15 of the FCC Rules. Operation is subject to the following two conditions: (1) This device may not cause harmful interference, and (2) this device must accept any interference received, including interference that may cause undesired operation.

## RF Exposure Information

This equipment complies with FCC radiation exposure limits set forth for an uncontrolled environment. This equipment should be installed and operated with minimum distance 20cm between the radiator and your body.

-7-