

GoveeLife

Model: H7180



User Manual

GoveeLife Smart Rice Cooker Pro

Contents

Safety Instructions	01
Included in the Box	03
Introduction	03
Getting Started	08
Govee Home App	09
Using Your Dehumidifier	10
Care & Maintenance	13
Troubleshooting	14
Appendix	16

GoveeLife Smart Rice Cooker Pro User Manual

Safety Instructions

General Safety

IMPORTANT INSTRUCTIONS

To prevent injuries to the user or other people and property damage, the following instructions must be followed when using the dehumidifier.

- Read all instructions.
- Do not touch hot surfaces. Use handles or knobs.
- To protect against electrical shock do not immerse cord, plugs, or the appliance in water or other liquid. See instructions for cleaning.
- Close supervision is necessary when any appliance is used by or near children.
- Unplug from outlet when not in use and before cleaning. Allow to cool before putting on or taking off parts.
- Do not operate any appliance with a damaged cord or plug or after the appliance malfunctions or has been damaged in any manner. Return appliance to the nearest authorized service facility for examination, repair, or adjustment.
- The use of accessory attachments not recommended by the appliance manufacturer may cause injuries.
- Do not use outdoors. Household use only
- Do not let cord hang over edge of table or counter, or touch hot surfaces.
- Do not place on or near a hot gas or electric burner, or in a heated oven.
- Extreme caution must be used when moving an appliance containing hot oil or other hot liquids.
- Always attach plug to appliance first, then plug cord into the wall outlet. To disconnect, turn any control to "off", then remove plug from wall outlet.
- Do not use appliance for other than intended use.
- Do not need to Preheating for using the appliance.
- Intended for countertop use only.
- **WARNING:** Spilled food can cause serious burns. Keep appliance and cord away from children. Never drape cord over edge of counter, never use outlet below counter, and never use with an extension cord.

SAVE THESE INSTRUCTIONS

Power Cord & Plug

This appliance has a polarized plug (one blade is wider than the other). To reduce the risk of electric shock, this plug is intended to fit into a polarized outlet only one way. If the plug does not fit fully into the outlet, reverse the plug. If it still does not fit, contact a qualified electrician. Do not attempt to modify the plug in any way.

A short power-supply cord is used to reduce the risk resulting from it being grabbed by children, becoming entangled in, or tripping over a longer cord. Do not use an extension cord"

If the power cord or the plug is damaged, please contact customer service for repair or similar professionals to avoid danger.

Risk of Leaks & Electric Shock

The appliance must be disconnected from power before cleaning or other maintenance, and any other servicing should be performed by an authorized service representative. To reduce the risk of electrical shock, cook only in the removable inner cooking pot provided.

Always make sure the outside of the inner cooking pot is dry prior to use. If the inner pot is returned to the cooker when wet, it may damage or cause the product to malfunction.

Included in the Box

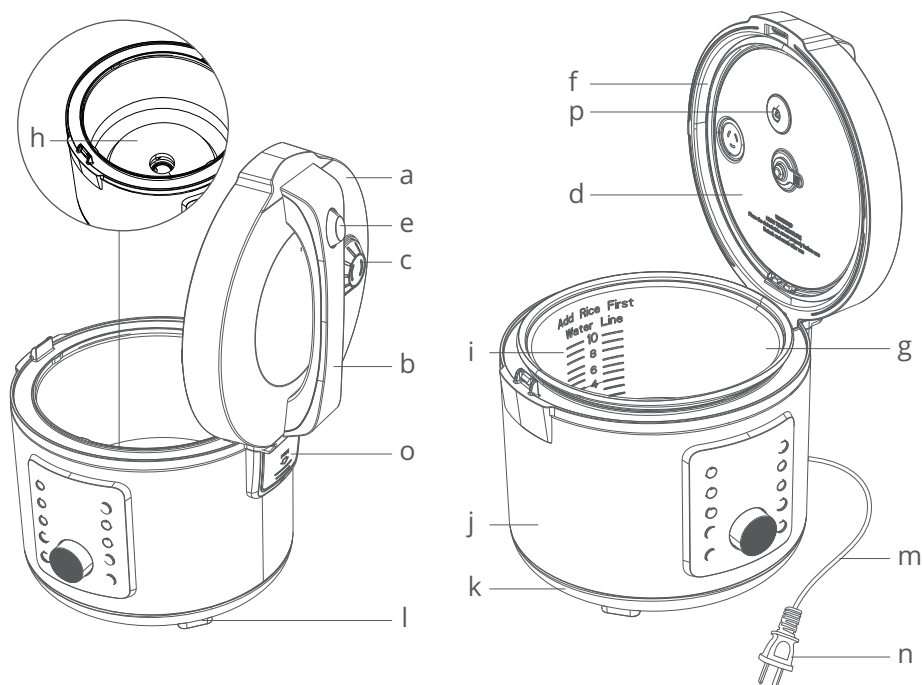
Item	Quantity
Rice Cooker	1
Steamer	1
Rice Spatula	1
Soup Spoon	1
Inner Lid	1 (Built-in)
Condensation Collector	1 (Built-in)
User Manual	1

Introduction

Goveelife Smart Rice Cooker is specially designed for the American kitchens. It has an unique weighing scale in the inner pot, and a heating base of high power, which can greatly facilitate your cooking process, making the cooking process of each dish more interesting.

Part Names

- | | |
|---------------------------|---------------------------|
| a. Upper Lid | i. Max Fill Line |
| b. Handle | j. Cooker Housing |
| c. Steam Release | k. Base |
| d. Inner Lid (detachable) | l. Non-slip Feet |
| e. Release Button | m. Power Cord |
| f. Sealing Ring | n. Plug |
| g. Inner Pot | o. Condensation Collector |
| h. Heating Element | p. Temperature Sensor |



Controls

RICE: Touch to enter the RICE Mode. You can set the timer. The screen will display the countdown.

SAUTE: Touch to enter the SAUTE Mode and the screen will start to display how long the device has been working.

STEAM: Touch to enter the STEAM Mode. You can set the timer and working time. The screen will display the countdown.

SLOW COOK: Touch to enter the SLOW COOK Mode. You can set the timer and working time. The screen will display the countdown.

DIY: Touch to enter the DIY Mode. You can set the target temperature and working time in the app, and the screen will display the countdown. You can also set the target temperature and working time for different time periods in the app to meet some special cooking demands. For example, boiling water for tea, slow cook, soaking etc., which need different heating temperatures in different periods.

When any of the five modes above is readying, the indicator flashes. Touch START and the indicator will turn solid white.

SCALE: Touch to enter the SCALE Mode. The screen will display the weight of the food. Press and hold for 2 seconds to reset the reading.

Note:

- 1.The Max weight is 5KG.
- 2.To ensure the precision of the weight, please place the product on a level, hard surface.

TIMER: Set the timer with the knob.



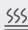


KEEP WARM: Start to keep warm.

START: Start the current procedure.

CANCEL: Cancel the current procedure and enter the Standby Mode.

Knob: Adjust the time and heating level (only in SAUTE AND SLOW COOK Mode). Twist counterclockwise to reduce or clockwise to increase.

Indicator Status

Indicator	Working Status	Light Status
	Bluetooth Broadcasting	Flashes White
	Wi-Fi is Connected	Solid White
	Wi-Fi is not Connected/is disconnecting	Light Off
	Timer is Set	Solid White
--:--	In Standby Mode	Solid White
00:00	Displaying Working Hours / Weight	Solid White
	Keeping Warm	Solid White
MIN	Displaying Minutes	Solid White
SEC	Displaying Seconds	Solid White
	Displaying Weight	Solid White
<div>Low</div> <div>High</div> <div>Max</div>	Displaying the Heating Level (Only in SAUTE AND SLOW COOK Mode)	Solid White
	RICE/SAUTE/STEAM/SLOW COOK/DIY Mode is Ready	Flashes White
	RICE/SAUTE/STEAM/SLOW COOK/DIY/SCALE Mode is Running	Solid White

Functions

Memory Function

This rice cooker will save its previous settings when powered off. When it is powered back on, the settings will resume.

Smart Function

After connected with Govee Home App, you can set the device according to your cooking habits and explore more delicious food with the help of recipes in the app.

Boil Dry Protection

The product will automatically stop heating and enter Standby Mode after detecting no food/water remaining in the pot to avoid safety risks due to high temperature. If the protection is triggered, the product will only resume work after it has cooled down.

Scale Function

The rice cooker is equipped with a high-precision weight sensor which can weigh food within 5KG making your cooking easier.

Note: To ensure the precision of the weight, please place the product on a level, hard surface.

Getting Started

1. Please carefully read all safety instructions and labels. Remove all packaging of the rice cooker and its accessories.
2. Before first use, clean the inner pot, inner lid and all other accessories.
3. Make sure the condensation collector is correctly installed before use. Grip the upper part of the condensation collector (with the remark "PUSH" faces against you), slide it into the slot, and press the top of it to put it into place. Press at the PUSH mark and slide it out.
4. Press the release button on the handle. Open the upper lid, take out the inner pot. Add food into it according to your needs. Please do not add less than 500ml/500g food every time.
5. Wipe the surfaces of the inner pot to make them clean and dry before placing it back onto the heating element. Make sure no food or water is left on the bottom of the inner pot. After that, gently twist the pot left and right to make sure it is placed properly.
6. Decide whether is necessary to close the lid during cooking according to the cooking procedure or recipe. If you need to close the lid, put down the lid and then gently press to make sure the lid is fixed.
7. Start cooking: After selecting the mode, the indicator starts to flash. Touch START to start the procedure. If you do not touch START after selecting the mode, the cooker will automatically work in the mode you selected 10 seconds later. And the screen will display the countdown or how long it has been working according to the mode you set.
8. It is recommended that after finishing every cooking procedure, wait until the inner lid reaches the room temperature to detach and wash it, and put the inner lid back to place before using next time. Do not forget to clean the water in the condensation collector.

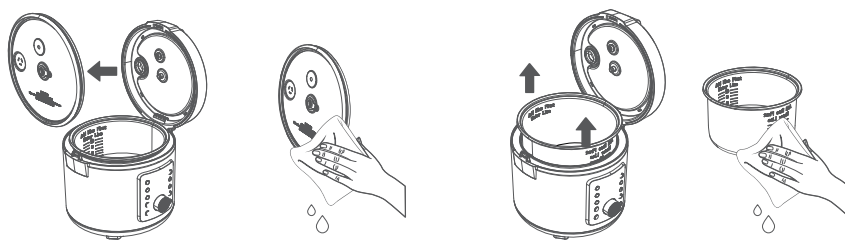
Safety Tips:

1. Before using, make sure the product is properly placed onto the heating element. Do not let other containers other than the included inner pot touch the heating element directly. The inner lid and condensation collector should be properly placed. Make sure the surfaces of the inner pot are clean and dry before putting it back in onto the heating element.
2. Do not touch hot surfaces during the use. If you need to open the lid, beware of the hot steam being emitted from the steam vent.
3. Do not add food that exceeds the Max fill line.

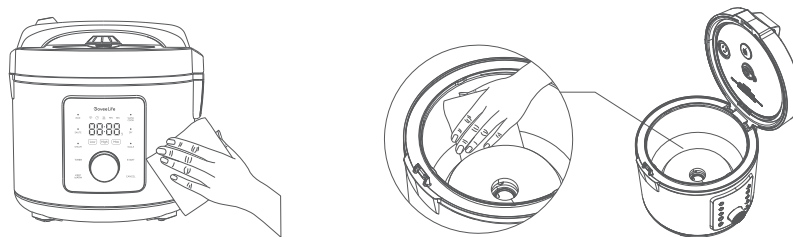
Cleaning Tips:

1. Before cleaning, unplug the power cord to let the product cool down until it reaches the room temperature.

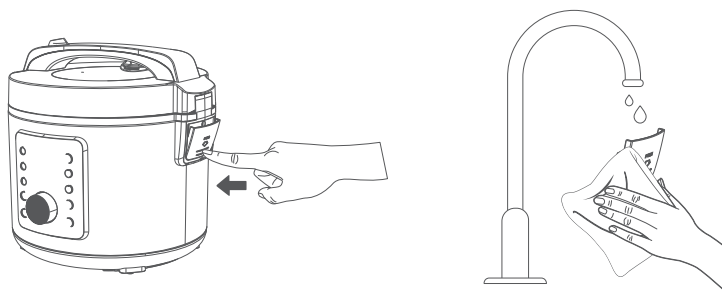
2. Open the lid and detach the inner lid. Take out the inner pot and clean the pot and the inner lid.



3. Use a clean cloth to clean the exterior pot of the rice cooker. Pay special attention to clean the groove surrounding the heating element.



4. Detach and wash the condensation collector.



5. Clean the outer surfaces of the cooker with a wet cloth.

Note:

- All accessories including the inner pot, inner lid, steamer etc., are all dishwasher safe.
- Do not use corrosive detergent.
- The inner pot has non-stick coating. Avoid cleaning or scrubbing it with steel wire ball or metals so as not to affect your normal use.

Govee Home App

You can access more features using Govee Home App.

Downloading Govee Home App

To download Govee Home App, scan the QR code or search for “Govee” in the Apple App Store® (iOS) or Google Play Store (Android).



Note:

- Choose “Allow” to the permissions requested when opening Govee Home App for the first time. These permissions allow the app’s features to function normally and are not used to record personal, private information.
- Due to ongoing updates, Govee Home App may be slightly different than shown in this manual. In case of any differences, always follow the in-app instructions.

Pairing with Govee Home App

1. Turn on your smartphone’s Bluetooth.
2. Open Govee Home App, tap the “+” icon in the top right corner and search for “H7180.”
3. Tap the device icon and follow the on-screen instructions to complete pairing.

Note:

- You can use Govee Home App to connect your rice cooker to Amazon Alexa or Google Assistant. Follow the in-app instructions to connect to each voice assistant.
- Govee Home App is being continually updated and its features do expand

Troubleshooting

The troubleshooting section below is for solving frequently asked questions. If your problem persists, please contact customer support.

For Rice Cooker

Problem	Solution
The upper lid cannot be opened	Check if the release button is damaged or not. If it is damaged, contact Customer Support.
	Wait until the cooker to reach the room temperature and try again.
	The spillover of food might have stuck the upper lid and the cooker body. Clean the cooker and try again.
The upper lid cannot be closed	Do not add food or water that exceeds the Max fill level.
	Check whether the inner pot is properly placed (by referring to “Getting Started 5”).
	Check whether the inner lid is properly placed (by referring to the image in Safety Tips 1).
The buzzer does not sound	Check whether Do Not Disturb Mode is on.
The screen and indicator light do not light up	Check whether Do Not Disturb Mode is on.
The device is not working	Check whether the plug is plugged well.
	Check whether the outer surface of the pot is dry.
	Contact Customer Support.
The screen displays “err0”	The cooker is boiling dry. Add food to the pot or unplug the power cord.
The screen displays “err1”	The unit is overheating inside. Unplug the power cord.
The screen displays “err2”	The internal accessories of the product are broken. Stop using and contact Customer Support.
The screen displays “err3”	The inner pot is not properly placed. Refer to “Getting Started 5” to put the pot in place.

The screen displays "err4"	The food surpasses the 5kg weight limit of the scale.
The rice is overcooked	Added too much water. Refer to a recipe or adjust the amount of water based on the water level lines inside the pot.
The rice is underdone or too hard	Not added enough water. Refer to a recipe or adjust the amount of water based on the water level lines inside the pot.
	Do not open the lid during the cooking process or right after the cooking is finished. It is recommended to let the rice rest inside the cooker for at least 5 minutes when the unit is finished cooking to get better rice texture.
The temperature is too high for saute or slow cook	Twist the knob to cycle through Low, Mid, and High level.
The food is underdone after being braised	Please add water to the Min Water Level.
The food is too soft after being braised	Properly reduce the cook time for braising.
	Do not add excessive water to the pot to avoid wetting the food after the water boils.
The scale has a large error range	Press and hold the Scale button for 2 seconds to reset.
	Place the product on a level and hard surface.
	Contact Customer Service.
The knob is broken/Cannot make any settings	Contact Customer Support.

For App & Connectivity

1. Cannot connect to Govee Home App.

- Make sure your phone is powered on and is not connected with other Bluetooth devices.
- Enable the phone's Location Services.
- Try connecting with another phone.
- Make sure your app is updated to the latest version.
- Make sure you connect to your Wi-Fi router's 2.4GHz network and that the network is working correctly.
- Make sure the Wi-Fi password you entered is correct.
- Shorten the distance between the rice cooker, Wi-Fi router, and the phone.
- Make sure your rice cooker and the Wi-Fi router are located away from appliances that produce electromagnetic radiation (e.g. microwave ovens, refrigerators, etc.)
- If you are using a VPN, try turning it off and then connecting the rice cooker.
- Disable portal authentication for your Wi-Fi network. If portal authentication is enabled, this rice cooker will not be able to access your Wi-Fi network, and setup will fail. Portal authentication means that you need to sign in to your Wi-Fi network through a web page before you can use the Internet.

2. Cannot find the device on Bluetooth Device Nearby page of the app.

- The rice cooker may be connected with another phone. Disconnect it from the other phone first.


3. The rice cooker is offline.

- Make sure the rice cooker is plugged in and powered on, then refresh "My Devices" in Govee Home App by swiping down on the screen.
- Make sure your router is connected to the internet, and your phone's network connection is working.
- If the Wi-Fi password has been changed, the rice cooker will automatically go offline. Try connecting it to the network again.
- Delete the offline rice cooker from Govee Home App, then add and reconfigure the rice cooker again in the app.


Appendix



After-Sales Service

 Warranty: 12-Month Limited Warranty

 Support: Lifetime Technical Support

 Email: support@govee.com

 Official Website: www.govee.com

 @Govee  @goveeofficial  @govee.official

 @GoveeOfficial  @GoveeOfficial

Specifications

Model Name	H7180
Power Supply	AC 120V, 60Hz
Working Temperature	-10°C to 50°C / 14°F to 122°F

Compliance Information

FCC Statement

This device complies with Part 15 of the FCC Rules. Operation is subject to the following two conditions:

(1) This device may not cause harmful interference, and (2) This device must accept any interference received, including interference that may cause undesired operation.

Warning: Changes or modifications not expressly approved by the party responsible for compliance could void the user's authority to operate the equipment.

Note: This equipment has been tested and found to comply with the limits for a Class B digital device, pursuant to Part 15 of the FCC Rules. These limits are designed to provide reasonable protection against harmful interference in a residential installation.

This equipment generates uses and can radiate radio frequency energy and, if not installed and used in accordance with the instructions, may cause harmful interference to radio communications. However, there is no guarantee that interference will not occur in a particular installation. If this equipment does cause harmful interference to radio or television reception, which can be determined by turning the equipment off and on, the user is encouraged to try to correct the interference by one or more of the following measures:

- (1) Reorient or relocate the receiving antenna.
- (2) Increase the separation between the equipment and receiver.
- (3) Connect the equipment into an outlet on a circuit different from that to which the receiver is connected.
- (4) Consult the dealer or an experienced radio/TV technician for help.

FCC Radio Frequency Exposure Statement

This equipment complies with FCC radiation exposure limits set forth for an uncontrolled environment. This equipment should be installed and operated with minimum distance 20cm between the radiator & your body.

The following importer is the responsible party
Name: GOVEE MOMENTS (US) TRADING LIMITED
Address: 2501 Chatham Rd Suite R Springfield IL 62704
Email: support@govee.com
Contact information: <https://www.govee.com/support>



FOR INDOOR USE ONLY

The Bluetooth® word mark and logos are registered trademarks owned by Bluetooth SIG, Inc. and any use of such marks by Shenzhen Qianyan Technology LTD is under license.

The trademark GoveeLife has been authorised to Shenzhen Qianyan Technology LTD.
Copyright ©2021 Shenzhen Qianyan Technology LTD. All Rights Reserved.



Govee Home App

For FAQs and more information,
please visit: www.govee.com