

Troubleshooting

- ❶

Failed to connect to Govee Home App.

● Make sure the string lights are connected to power.

● Make sure your smartphone's Bluetooth is enabled.

● Keep your smartphone close to the control box and try again.
- ❷

Missing parts/Receiving products from a secondary sale.

● Check the pictures on the web page to confirm what parts are missing and contact customer service in the app for replacements.

● If you received a product from a secondary sale or a product that cannot work properly, please contact customer service in the app for a replacement.
- ❸

Network failure

● Make sure your home Wi-Fi is 2.4Ghz, and your smartphone's Bluetooth is on.

● Long press the control box for more than 5s to reset the whole light. Unbind and then rebind the light.

● If the light is too far away from the Wi-Fi, bring the device closer to the Wi-Fi, and then reconnect to the network.

● Check if there are too many devices connected to the network. If so, change to another network.

● If the above methods cannot solve your problems, please contact customer service in the app to replace the control box.
- ❹

App operation guide is needed.

● Open Govee Home App, tap My Profile>> Govee Instructions>> App Guide>> How to Use, to find more details.

If your problem persists, please contact Customer Support.

Customer Service

- 🔊

Warranty: 12-Month Limited Warranty
- 🔍

Support: Lifetime Technical Support
- ✉️

Email: support@govee.com
- 🌐

Official Website: www.govee.com
- 📺

@Govee
- 📷

@govee\_official
- 📺

@govee.official
- 🐦

@Goveeofficial
- 📘

@Govee.smarthome

FCC and ISED Canada Statement

This device complies with Part 15 of the FCC Rules and Industry Canada licence-exempt RSS standard(s). Operation is subject to the following two conditions:  
(1) This device may not cause harmful interference, and (2) This device must accept any interference received, including interference that may cause undesired operation.  
Warning: Changes or modifications not expressly approved by the party responsible for compliance could void the user's authority to operate the equipment.  
Le présent appareil est conforme aux CNR d'Industrie Canada applicables aux appareils radio exempts de licence. L'exploitation est autorisée aux deux conditions suivantes :  
(1) l'appareil nedit pas produire de brouillage, et  
(2) l'utilisateur de l'appareil doit accepter tout brouillage radioélectrique subi, même si le brouillage est susceptible d'en compromettre le fonctionnement.

NOTE: This equipment has been tested and found to comply with the limits for a Class B digital device, pursuant to Part 15 of the FCC Rules.

These limits are designed to provide reasonable protection against harmful interference in a residential installation. This equipment generates uses and can radiate radio frequency energy and, if not installed and used in accordance with the instructions, may cause harmful interference to radio communications. However, there is no guarantee that interference will not occur in a particular installation. If this equipment does cause harmful interference to radio or television reception, which can be determined by turning the equipment off and on, the user is encouraged to try to correct the interference by one or more of the following measures:

- 1.Reorient or relocate the receiving antenna.
- 2.Increase the separation between the equipment and receiver.
- 3.Connect the equipment into an outlet on a circuit different from that to which the receiver is connected.
- 4.Consult the dealer or an experienced radio/TV technician for help.

This Class B digital apparatus complies with Canadian ICES-005. Cet appareil numérique de la classe B est conforme à la norme NMB-005 du Canada.

FCC and IC Radiation Exposure Statement

This equipment complies with FCC and IC radiation exposure limits set forth for an uncontrolled environment. This equipment should be installed and operated with minimum distance 20cm between the radiator & your body.

Lors de l'utilisation du produit, maintenez une distance de 20 cm du corps afin de vous conformer aux exigences en matière d'exposition RF.

**Responsible party (this contact information is only for FCC matters) :**  
Name: GOVEE MOMENTS(US) TRADING LIMITED  
Address: 2501 Chatham Rd Suite R Springfield IL 62704  
Email: certification@govee.com  
Contact information: https://www.govee.com/support

The Bluetooth® word mark and logos are registered trademarks owned by Bluetooth SIG, Inc. and any use of such marks by Shenzhen Qianyan Technology LTD is under license.

The trademark Govee have been authorised to Shenzhen Qianyan Technology LTD.  
Copyright ©2021 Shenzhen Qianyan Technology LTD.  
All Rights Reserved.



User Manual

Model: H7037  
Govee Outdoor String Lights 2

Safety Instructions

Read and follow all the safety instructions:

- This product is rated as IP65 Waterproof. It can be used outdoors but cannot be immersed in water.
- Risk of Electric Shock. The adapter install only to a covered Class A GFCI receptacle that has an enclosure that is weatherproof with the attachment plug cap inserted or removed.
- Tighten up the waterproof cap before installing the light.
- The internal light sources of the light cannot be replaced. If the light sources sustain damage, the product should be replaced.
- Do not allow children to assemble and install this product without adult supervision.
- Avoid installing this product near major heat sources.
- External dimmers cannot be used with this product.
- Use this product with the provided power adapter only.
- CAUTION-The product is not a toy. Children and the disabled should use it under adult supervision.

Introduction

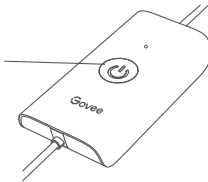
Thanks for choosing the Govee Outdoor String Lights 2. This product has an IP65 waterproof rating, making them ideal for outdoor use. Using Govee Home App, you can adjust its color and brightness and sync its lighting effects with rhythm by turning on Music Mode.

What You Get

Item	Quantity
String Light	1
Adapter	1
Control Box	1
Cable Clip	15
User Manual	1

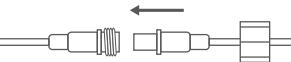
At a Glance

- Press to turn the light on or off.
- Long press for 5 seconds to reset.

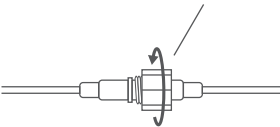


Controlling String Lights in Series

1. Connect the two string lights as shown in the image.



2. Firmly screw the wire nut.

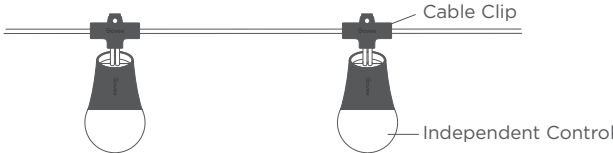


**Note:** Only 3 string lights can be connected in a series.

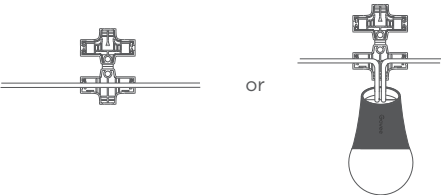
Installing Your Device

Installation Steps

Use the hooks to hang the light bulbs onto the string.



1 Find a proper position and firmly fit the cables into the cable clip.



Pairing Your Device with Govee Home App

What You Need:

- A Wi-Fi router supporting the 2.4GHz and 802.11 b/g/n bands. 5GHz is not supported.
- A smartphone or tablet running iOS or Android.



- 1 Download Govee Home App from the App Store (iOS devices) or Google Play (Android devices).
- 2 Turn on your smartphone's Bluetooth.
- 3 Open the app, tap the "+" icon in the top right corner and search "H7037."
- 4 Tap the device icon and follow the on-screen instructions to complete pairing.

Specifications

Power Input	100-240VAC 50/60Hz
Power Output	36VDC 1.5A
Total Length (including control box and power adapter)	54FT/16.5M
Light Color	RGB+Warm White
Waterproof	Control Box (IP65) String Light (IP65)
Working Temperature	-20°C-40°C / -4°F-104°F



Govee Home App

For FAQs and more information, please visit: [www.govee.com](http://www.govee.com)