

H61B5 英语说明书

版本:1.0

料号:

成型尺寸:105×75 (mm)

材质:80G书页纸

工艺:单色印刷

装订方式:骑马订

页数:22页



User Manual

Model: H61B5
Govee Strip Light with cover

Safety Instructions

Read and follow all the safety instructions:

- The strip light is not waterproof. Avoid exposing it to splashing or dripping water.
- The operating temperature should be within -10° to 40°C (14° to 104°F).
- The strip light's internal light source cannot be replaced. If it breaks, replace with a new one.
- Do not allow children to install the strip light alone.
- Avoid placing the strip light near heat sources.
- Do not install the strip light with a dimming driver.
- Avoid placing the strip light near potentially dangerous sources (e.g., candles, liquid-filled objects).

Introduction

Thanks for choosing the Govee Strip Light with cover. This product includes 13 straight strip light covers and 4 sets of corner covers, allowing you to create unique cross-plane lighting effects for your space. Different combinations of the accessories bring you a richer choice of DIY. The RGBIC segmented lighting effects can bring you a dreamy lighting experience. It also supports Music DreamView, synchronizing with other Govee lighting products. When connected with Govee Home App, you can adjust its colors, brightness, and scene modes to your liking. It also supports voice assistants such as Alexa and Google Assistant.

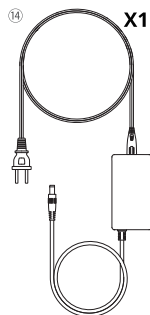
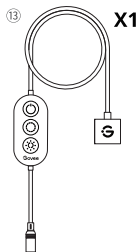
What You Get

	Item	Amount
①	Strip Light	1
②	40cm Cover (Strip Light)	12
③	20cm Cover (Strip Light)	1
④	2cm*2cm Cover (Outer Corner)	2
⑤	22cm Track (Outer Corner)	4
⑥	22cm Track (Inner Corner)	4
⑦	2cm*2cm Cover (Inner Corner)	2
⑧	End Cap (Plug-in)	1
⑨	End Cap	1
⑩	Stabilizing Clip	50
⑪	Level	1
⑫	Cable Clip	3
⑬	Control Box	1
⑭	Adapter	1
⑮	Adhesive Tape (Optional)	2

At a Glance



What You Get



Before You Install

Step 1

Unpack the box and check all included items.

Step 2

Power on to check whether the strip light is working.

Step 3

Unplug and plan the layout of the light (especially the amount of corners included). The total length of the light is 5 meters.

1. If there is no corner, you'll need twelve 40cm covers and one 20cm cover for the strip light to complete your installation.



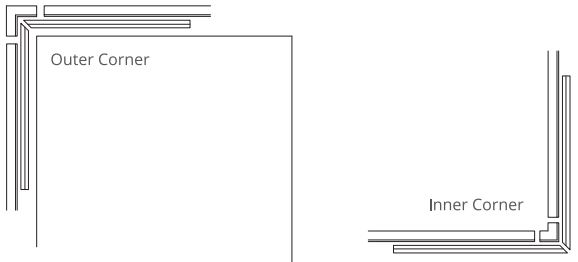
Note: Attach the covers as shown below.



Installation video

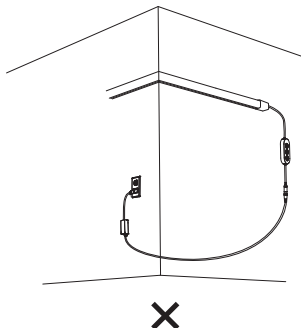
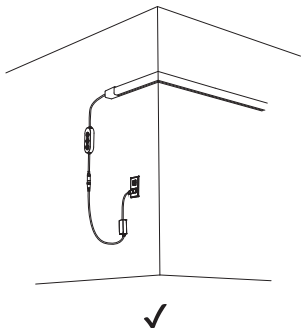
2. If there is either an outer corner or an inner corner, you'll need two corresponding tracks and two 40cm covers for the strip light to complete your installation.

Note: If there is a corner where you plan to install the light, start by installing the tracks at the corner.



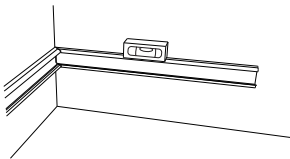
Step 4

Plan the distances between the power socket, the plug, and the light.

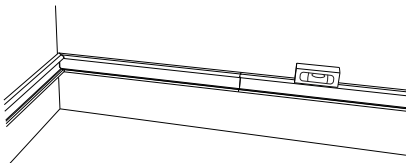


Installation Steps

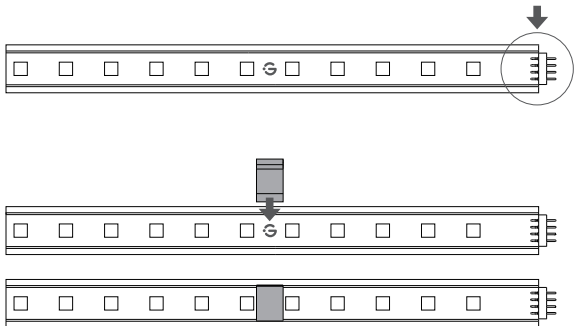
1. If there is a corner where you want to install the light, install the track at the corner first to make sure the cover is parallel to the ground with the help of the level.



2. Then, fix all tracks in order by aligning with the tracks fixed at the corner with the help of the level.

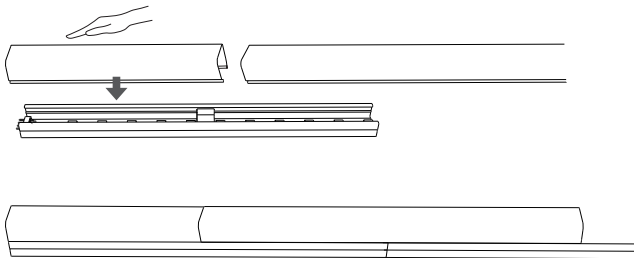


3. Stick the powered end of the strip light to the head of the track. Then fix the stabilizing clips at designated points to keep your strip light in place.

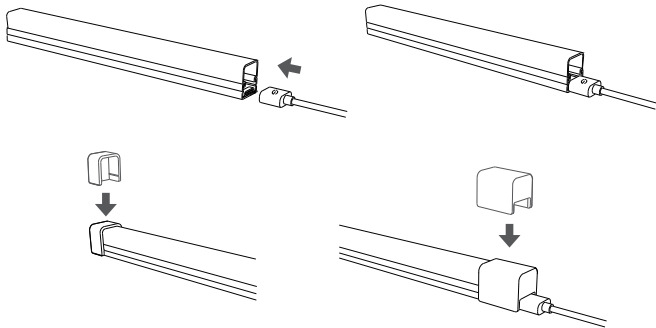


4. Attach all covers into place.

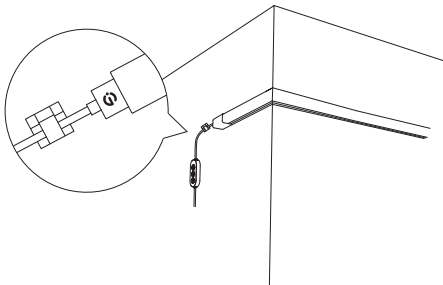
Note: Attach the covers as shown below.



5. Connect the powered end of the strip light with the cable. Fit the caps on both ends.



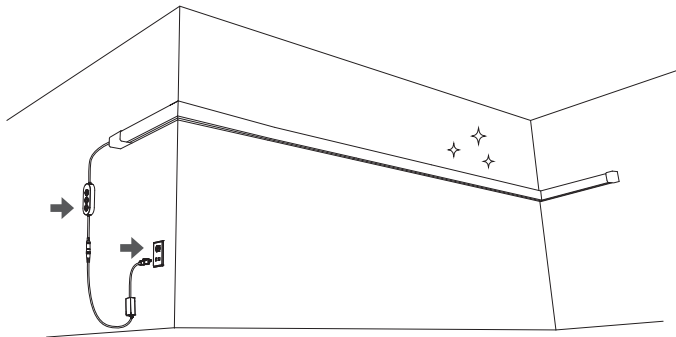
6. Use a cable clip to manage the cable.



7. Remove the protective film on the back of the control box and stick it to a proper position.



8. Plug in and enjoy.



***Note:**

1. Plan the layout and installation location in advance.
2. Design and plan the layout on the ground before installing on the wall.
3. Stagger covers when attaching to tracks.



4. Sort the accessories before installing.



5. The strip light is cuttable. For your safety, please unplug it from power before cutting.



Pairing Your Device with Govee Home App

What You Need

- A Wi-Fi router supporting the 2.4GHz and 802.11 b/g/n bands. 5GHz is not supported.
- A smartphone or tablet running iOS 8.0 (or above) or Android 4.3 (or above).

Pairing Instructions

1. Download Govee Home App from the App Store (iOS devices) or Google Play (Android devices).
2. Open the app, tap the "+" icon in the top right corner and search for "H61B5."
3. Tap the device icon and follow the on-screen instructions to complete pairing.



Specifications

Model	H61B5
Light Input	24V 2A
Lighting Color	RGBIC
Control Method	App, Voice
Working Temperature	-10°C to 40°C/14°F to 104°F

Troubleshooting

1. Cannot connect to Govee Home App.

- Check if the strip light is powered on.
- Check if Bluetooth on the smartphone is enabled, or try connecting with another smartphone.
- When connecting for the first time, ensure the smartphone is near the strip light.
- If the connection error still exists, delete the connected strip light from “Device” on the app. Reconnect to Govee Home App by following the instructions provided previously.

2. Wi-Fi is disconnected or failed to connect.

- Check if the strip light is powered on.
- Do not skip the Wi-Fi connection steps during the strip light pairing process.
- Ensure your Wi-Fi router is 2.4GHz (5GHz is not supported).
- Ensure you entered the correct Wi-Fi password during the Wi-Fi set up process.
- Try connecting the strip light with a smartphone hotspot to check if your home network is working properly.
- Shorten the distance between the strip light and the Wi-Fi router to less than 1m, then reconnect.

3. Cannot connect to Alexa or Google Assistant.

- Ensure the Wi-Fi connection is stable and working properly.
- Go to "User Guide" on the app's Settings page to pair the strip light again.

4. Can multiple users control one strip light?

- Each strip light can only be controlled by one account.
- If multiple users want to manage the same strip light, ensure they all use the same account.

Customer Service

 Warranty: 12-Month Limited Warranty

 Support: Lifetime Technical Support

 Email: support@govee.com

 Official Website: www.govee.com

 @Govee  @govee_official  @govee.official

 @Goveeofficial  @Govee.smarthome

FCC and ISED Canada Statement

This device complies with Part 15 of the FCC Rules and Industry Canada licence-exempt RSS standard(s). Operation is subject to the following two conditions:

- (1) This device may not cause harmful interference, and
- (2) This device must accept any interference received, including interference that may cause undesired operation.

Warning: Changes or modifications not expressly approved by the party responsible for compliance could void the user's authority to operate the equipment.

Le présent appareil est conforme aux CNR d'Industrie Canada applicables aux appareils radio exempts de licence. L'exploitation est autorisée aux deux conditions suivantes :

- (1) l'appareil ne doit pas produire de brouillage, et
- (2) l'utilisateur de l'appareil doit accepter tout brouillage radioélectrique subi, même si le brouillage est susceptible d'en compromettre le fonctionnement.

NOTE: This equipment has been tested and found to comply with the limits for a Class B digital device, pursuant to Part 15 of the FCC Rules.

These limits are designed to provide reasonable protection against harmful interference in a residential installation. This equipment generates uses and can radiate radio frequency energy and, if not installed and used in accordance with the instructions, may cause harmful interference to radio communications. However, there is no guarantee that interference will not occur in a particular installation. If this equipment does cause harmful interference to radio or television reception, which can be determined by turning the equipment off and on, the user is encouraged to try to correct the interference by one or more of the following measures:

1. Reorient or relocate the receiving antenna.
2. Increase the separation between the equipment and receiver.
3. Connect the equipment into an outlet on a circuit different from that to which the receiver is connected.
4. Consult the dealer or an experienced radio/TV technician for help.

FCC and IC Radiation Exposure Statement

This equipment complies with FCC and IC radiation exposure limits set forth for an uncontrolled environment. This equipment should be installed and operated with minimum distance 20cm between the radiator & your body.

Lors de l'utilisation du produit, maintenez une distance de 20 cm du corps afin de vous conformer aux exigences en matière d'exposition RF.

This Class B digital apparatus complies with Canadian ICES-005.

Cet appareil numérique de la classe B est conforme à la norme NMB-005 du Canada.

The trademark Govee has been authorised to Shenzhen Qianyan Technology LTD.

Copyright ©2021 Shenzhen Qianyan Technology LTD.

All Rights Reserved.

Dimmable only with Govee Home APP or compatible device only

Not intended for illumination. Only used for creating ambiance.

Do not connect the strip lamp to a power source while it is being installed or wound.

Responsible party :

Name: GOVEE MOMENTS(US) TRADING LIMITED

Address: 2501 Chatham Rd Suite R Springfield IL 62704

Email: certification@govee.com

Contact information: <https://www.govee.com/support>



FOR INDOOR USE ONLY

NUR FÜR DEN INNENGEBRAUCH

POUR UNE UTILISATION EN INTÉRIEUR UNIQUEMENT

SÓLO PARA USO EN INTERIORES

SOLO PER USO INTERNO



Govee Home App

For FAQs and more information,
please visit: www.govee.com