

READ AND SAVE THESE INSTRUCTIONS

Safety Instructions

- Read and follow all the safety instructions:
- This product is not waterproof. Avoid exposing its components to splashes, water drops, or high-humidity environments.
 - The working temperature should be between 14°F to 104°F (-10°C to 40°C).
 - The internal light sources of this product cannot be replaced. If the light sources sustain damage, the product should be replaced.
 - Do not allow children to assemble and install this product without adult supervision.
 - Avoid installing this product near major heat sources.
 - External dimmers cannot be used with this product.
 - Avoid installing this product near potentially dangerous sources (e.g., candles, liquid-filled objects.)

Introduction

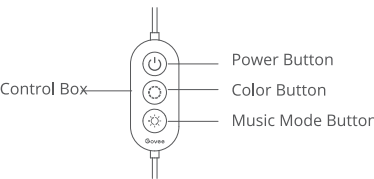
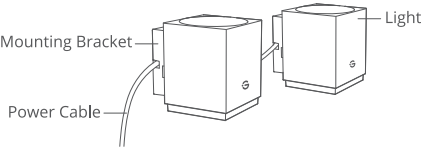
Thanks for choosing Govee Wall Lights. This product is composed of 6 connected fixtures that can be easily installed on the walls of a corridor, living room, bedroom, and more, bringing another level of colorfulness to daily life.

Download Govee Home App to adjust colors, color segmentation, brightness, effects, and mode. It can also connect with third-party voice assistants such as Alexa and Google Assistant for hands-free control.

What You Get

Item	Quantity
Wall Light	6
Control Box	1
Power Adapter	1
Mounting Bracket	6
Power Cable	5
Cable Clip	6
User Manual	1
Service Card	1

At a Glance

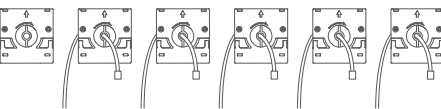


Power Button	Press to turn on/off.
Color Button	Press to cycle through 8 colors.
Music Mode Button	Press to cycle through 4 Music Modes.

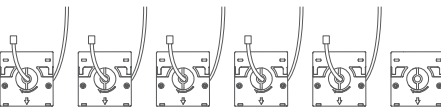
Installation Steps

- 1 Clean the surface and make sure there is no dust or debris on it.
- 2 Determine the location of the power supply.

A. Power supply on the right
(Bolt hole on the upper part of the base)

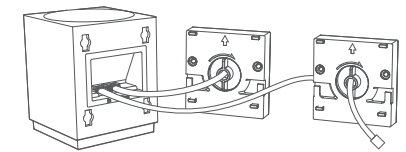


B. Power supply on the left
(Bolt hole on the lower part of the base)

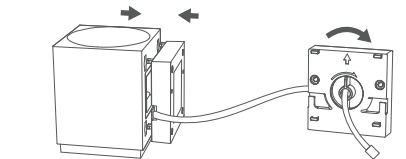


- 3 Peel off the protective film of the adhesive tape, stick the light base onto the wall and firmly press it for more than 15 seconds.
- 4 Start installing from the light that is far away from the power supply. Attention: Installation errors might occur if you do not follow this sequence.

- 5 Plug the cable from the second base into the input port and the cable goes through the core of the base into the output port. Please note that the light that is far away from the power supply does not have an output port.



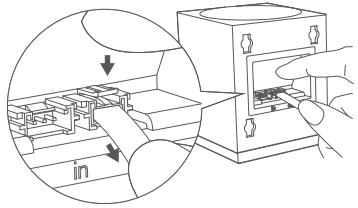
- 6 After connecting all the lights with the cables, fit the bases into the slots on the lights and slide upwards or downwards to fix the lights onto the bases.
- 7 Fit the cables into the built-in cable clips and twirl the built-in handle clockwise to adjust the length of the cables.



- 8 Connect to the power adapter and plug into power.

Disassembly Steps

- 1 Unplug the device.
- 2 Detach the lights from the bases.
- 3 When detaching, simultaneously press the plastic connector on the top of the power cable with your finger and pull the cable out.



For FAQs and more information, please visit: www.govee.com

Pairing Your Device with Govee Home App

What You Need

- A Wi-Fi router that supports 2.4GHz and 802.11 b/g/n bands (5GHz is not supported).
- A smartphone or tablet running iOS or Android.

Pairing Instructions

- Download the Govee Home app from the App Store (iOS devices) or Google Play (Android devices).
- Turn on Bluetooth on your smartphone.
- Open the app, tap the “+” icon in the top right corner and search for “H6088”.
- Tap the device icon and follow the on-screen instructions to complete pairing.



Controlling the Device with Your Voice

- ❶ Open the app, then tap the device icon to enter detail page.
- ❷ Tap the setting icon in the top right corner.
- ❸ Select User Guide and follow the on-screen instructions to control the device using your voice.

Specifications

Power Input (Adapter)	100-240VAC 50/60Hz
Power Input (Light)	12VDC 3A
Lumens	150lm/Pcs
Color	RGBW
Color Temperature	2700K
Light Displaying Technology	RGBIC
Working Temperature	14°F to 104°F (-10°C to 40°C)
Adjustable Range of Cable	27cm-90cm (0.9ft-3ft)

Troubleshooting

- ❶ Cannot connect to Govee Home App.
 - a. Check if the fixture light is powered on.
 - b. Check if your smartphone's Bluetooth is enabled, or try connecting with another smartphone.
 - c. When connecting for the first time, ensure the smartphone is near the fixture light.
 - d. If the connection error still exists, please delete the connected light from "My Device" on the app.
 - e. Reconnect to Govee Home App by following the instructions provided previously.
- ❷ Wi-Fi disconnected or failed to connect.
 - a. Check if the light is powered on.
 - b. Do not skip connecting to Wi-Fi during the pairing process.
 - c. Ensure your Wi-Fi router is 2.4GHz capable (5GHz is not supported).
 - d. Ensure you entered the correct Wi-Fi password during the Wi-Fi connection process.
 - e. Try connecting the light with a smartphone hotspot to check if your home network is working properly.
 - f. Shorten the distance between the light and the Wi-Fi router to less than 50ft, then try reconnecting.
- ❸ Cannot pair or connect with Alexa or Google Assistant. Please contact the Govee support team for rapid product replacement.

- a. Ensure the stability of the Wi-Fi connection.
- b. Go to the app Settings page and follow the instructions under “User Guide” to pair the device again.

- ❹ One or more fixture lights fail to light up.
 - a. Check that the connecting wires, control box, and power adapter are all properly connected.
- ❺ Only one user can control the device.
 - a. Each device can only be controlled by one account.
 - b. If multiple users wish to control the same device, ensure they are using the same account.

Customer Service

- 🛡️ Warranty: 12-Month Limited Warranty
- 🔧 Support: Lifetime Technical Support
- ✉️ Email: support@govee.com
- 🌐 Official Website: www.govee.com
- 📺 @Govee 📷 @govee_official 🎵 @govee.official
- 🐦 @Goveeofficial 📘 @Govee.smarthome

FCC and ISED Canada Statement

This device complies with Part 15 of the FCC Rules and Industry Canada licence-exempt RSS standard(s). Operation is subject to the following two conditions:
(1) This device may not cause harmful interference, and
(2) This device must accept any interference received, including interference that may cause undesired operation.
Warning: Changes or modifications not expressly approved by the party responsible for compliance could void the user's authority to operate the equipment.

Le présent appareil est conforme aux CNR d'Industrie Canada applicables aux appareils radio exempts de licence. L'exploitation est autorisée aux deux conditions suivantes :
(1) l'appareil nedit pas produire de brouillage, et
(2) l'utilisateur de l'appareil doit accepter tout brouillage radioélec trique subi, même si le brouillage est susceptible d'en compromettre le fonctionnement.

NOTE: This equipment has been tested and found to comply with the limits for a Class B digital device, pursuant to Part 15 of the FCC Rules.

These limits are designed to provide reasonable protection against harmful interference in a residential installation. This equipment generates uses and can radiate radio frequency energy and, if not installed and used in accordance with the instructions, may cause harmful interference to radio communications. However, there is no guarantee that interference will not occur in a particular installation. If this equipment does cause harmful interference to radio or television reception, which can be determined by turning the equipment off and on, the user is encouraged to try to correct the interference by one or more of the following measures:
1. Reorient or relocate the receiving antenna.
2. Increase the separation between the equipment and receiver.
3. Connect the equipment into an outlet on a circuit different from that to which the receiver is connected.
4. Consult the dealer or an experienced radio/TV technician for help.

This Class B digital apparatus complies with Canadian ICES-005. Cet appareil numérique de la classe B est conforme à la norme NMB-005 du Canada.

Govee is a trademark of Shenzhen Intellirocks Tech Co.,Ltd. Copyright ©2021 Shenzhen Intellirocks Tech Co.,Ltd. All Rights Reserved.

FCC and IC Radiation Exposure Statement

This equipment complies with FCC and IC radiation exposure limits set forth for an uncontrolled environment. This equipment should be installed and operated with minimum distance 20cm between the radiator & your body.

la distance entre l'utilisation et l'appareil ne doit pas être inférieure à 20 cm.

This device uses a non-replaceable light source. When the light source reaches the end of its life cycle, this device should be replaced. Not intended for illumination. Only used for creating ambiance.

The Bluetooth® word mark and logos are registered trademarks owned by Bluetooth SIG, Inc. and any use of such marks by Shenzhen Qianyan Technology LTD. is under license.

Responsible party :

Name: GOVEE MOMENTS(US) TRADING LIMITED
Address: 2501 Chatham Rd Suite R Springfield IL 62704
Email: certification@govee.com
Contact information: https://www.govee.com/support

CAUTION:

RISK OF EXPLOSION IF BATTERY IS REPLACED BY AN INCORRECT TYPE. DISPOSE OF USED BATTERIES ACCORDING TO THE INSTRUCTIONS.

ATTENTION :

RISQUE D'EXPLOSION SI LA BATTERIE EST REMPLACÉE PAR UN TYPE INCORRECT. ÉLIMINER LES BATTERIES USÉES CONFORMÉMENT AUX INSTRUCTIONS.



FOR INDOOR USE ONLY
POUR UNE UTILISATION EN INTÉRIEUR UNIQUEMENT



User Manual

Model: H6088

Govee RGBICW Cube Wall Sconces