

NYC1 Dock + Printer
User Manual



LEGAL NOTICE

THE INFORMATION IN THIS DOCUMENT CANNOT BE REPRODUCED IN ANY MECHANICAL, ELECTRICAL OR ELECTRONIC WAY AND UNDER ANY CIRCUMSTANCES WITHOUT THE WRITTEN CONSENT FROM Adyen NV.

Address: Simon Carmiggeltstraat 6-50, Amsterdam, 1011 DJ, Netherlands
Phone: +31621161626

REVISION HISTORY

Version	Data	Change description
1.0.0	05.06.2023	First Release
1.1.0	31.07.2023	Updated section “Regulatory”
1.2.0	17.08.2023	Updated main page

CONTENTS

REGULATORY 6

TECHNICAL SPECIFICATIONS 9

GENERAL VIEW 10

GETTING STARTED..... 11

OPERATING MODES 12

 PREPARING FOR WORK NYC1 DOCK + PRINTER 12

 REPLACING OF THE PAPER ROLL 14

 USING THE WIFI CONNECTION. STA AND AP MODES..... 15

CARE, MAINTENANCE AND WARRANTY 18

SERVICE AND SUPPORT..... 18

Regulatory

FCC Statement

FCC ID: 2A7UQ-NYC1DP

This equipment has been tested and found to comply with the limits for a Class B digital device, pursuant to part 15 of the FCC Rules. These limits are designed to provide reasonable protection against harmful interference in a residential installation. This equipment generates, uses and can radiate radio frequency energy and, if not installed and used in accordance with the instructions, may cause harmful interference to radio communications. However, there is no guarantee that interference will not occur in a particular installation. If this equipment does cause harmful interference to radio or television reception, which can be determined by turning the equipment off and on, the user is encouraged to try to correct the interference by one or more of the following measures:

- Reorient or relocate the receiving antenna.
- Increase the separation between the equipment and receiver.
- Connect the equipment into an outlet on a circuit different from that to which the receiver is connected.
- Consult the dealer or an experienced radio/TV technician for help.

Caution: Any changes or modifications to this device not explicitly approved by manufacturer could void your authority to operate this equipment.

This device complies with part 15 of the FCC Rules. Operation is subject to the following two conditions: (1) This device may not cause harmful interference, and (2) this device must accept any interference received, including interference that may cause undesired operation.

RF Exposure Information

The device has been evaluated to meet general RF exposure requirement. The device can be used in portable exposure conditions without restriction.

ISED Statement

IC: 30044-NYC1DP

English: This device complies with Industry Canada license-exempt RSS standard(s). Operation is subject to the following two conditions: (1) This device may not cause interference, and (2) This device must accept any interference, including interference that may cause undesired operation of the device.

The digital apparatus complies with Canadian CAN ICES-3 (B)/NMB-3(B).

This device meets the exemption from the routine evaluation limits in section 2.5 of RSS 102 and compliance with RSS 102 RF exposure, users can obtain Canadian information on RF exposure and compliance.

This equipment complies with Canada radiation exposure limits set forth for an uncontrolled environment.

French: Le présent appareil est conforme aux CNR d'Industrie Canada applicables aux appareils radio ex

empts de licence. L'exploitation est autorisée aux deux conditions suivantes: (1) l'appareil ne doit pas produire de brouillage, et (2) l'utilisateur de l'appareil doit accepter tout brouillage radioélectrique subi, même si le brouillage est susceptible d'en compromettre le fonctionnement. L'appareil numérique est conforme à CAN ICES-3 (B) / NMB-3 (B).

Cet appareil est conforme à l'exemption des limites d'évaluation courante dans la section 2.5 du cnr - 102 et conformité avec rss 102 de l'exposition aux rf, les utilisateurs peuvent obtenir des données canadiennes sur l'exposition aux champs rf et la conformité.

Cet équipement est conforme aux limites d'exposition aux rayonnements du Canada établies pour un environnement non contrôlé.

English:

Specific Absorption Rate (SAR) information:

This NYC1 Dock + Printer meets the government's requirements for exposure to radio waves. The guidelines are based on standards that were developed by independent scientific organizations through periodic and thorough evaluation of scientific studies. The standards include a substantial safety margin designed to assure the safety of all persons regardless of age or health. ISED RF Exposure Information and Statement the SAR limit of Canada (ISED) is 1.6 W/kg averaged over one gram of tissue. Device types: NYC1 Dock + Printer has also been tested against this SAR limit. This device was tested for typical body-worn operations with the back of the NYC1 Dock + Printer kept 0mm from the body. To maintain compliance with ISED RF exposure requirements, use accessories that maintain an 0mm separation distance between the user's body and the back of the NYC1 Dock + Printer. The use of belt clips, holsters and similar accessories should not contain metallic components in its assembly. The use of accessories that do not satisfy these requirements may not comply with ISED RF exposure requirements, and should be avoided.

French:

Informations sur le débit d'absorption spécifique (DAS):

Cette Dock NYC1 +Printer imprimante répond aux exigences du gouvernement en matière d'exposition aux ondes radio. Les lignes directrices sont basées sur des normes élaborées par des organisations scientifiques indépendantes à travers une évaluation périodique et approfondie des études scientifiques. Les normes comprennent une marge de sécurité substantielle conçue pour assurer la sécurité de toutes les personnes, quel que soit leur âge ou leur état de santé. Information et déclaration d'ISDE sur l'exposition aux RF la limite DAS du Canada (ISDE) est de 1,6 W / kg en moyenne sur un gramme de tissu. Types d'appareils: la Dock NYC1 + imprimante a également été testée par rapport à cette limite SAR. Cet appareil a été testé pour des opérations typiques portées sur le corps avec le dos de la NYC1 Dock + Printer gardé à 0 mm du corps. Pour maintenir la conformité avec les exigences d'exposition RF d'ISDE, utilisez des accessoires qui maintiennent une distance de séparation de 0 mm entre le corps de l'utilisateur et l'arrière de la NYC1 Dock + Printer. L'utilisation de clips de ceinture, d'étuis et d'accessoires similaires ne doit pas contenir de composants métalliques dans son assemblage. L'utilisation d'accessoires qui ne satisfont pas à ces exigences peut ne pas être conforme aux exigences d'exposition aux RF d'ISDE et doit être évitée.



Waste Electrical & Electronic Equipment

The symbol means that according to local laws and regulations your product shall be disposed of separately from household waste at the end of its working life. To prevent possible harm to the environment or human health from uncontrolled waste disposal, please separate this from other types of wastes and recycle it responsibly to promote the sustainable reuse of material resources.



NYC1 Dock + Printer is in conformity with:
Directive 2014/53/EU (RE Directive)

TECHNICAL SPECIFICATIONS

Feature	Parameters
Processor	<i>ARM Cortex® M4 Security Microcontroller</i>
Connectivity	<i>USB between COTS and NYC1 Dock + Printer Serial between NYC1 reader and NYC1 Dock + Printer WiFi supported protocols; 802.11 b/g/n (2.4GHz); supported modes STA/AP</i>
Power supply	<i>Input: 12V/1.5A (from power supply PD adapter)</i>
	<i>Output from charging pins: 5V/0.5A DC (for NYC1 readers)</i>
	<i>Output from USB connector: 5V/1.5A DC (for COTS devices)</i>
Compatibility	<i>NYC1, NYC1-SCR</i>
Buttons	<i>One button for switching NYC1 Dock + Printer to work as WiFi AP</i>
Printing Mechanism	<i>Thermal line dot printing method</i>
Printing Width	<i>48 mm, 384 dots per line</i>
Printing Resolution	<i>8 x 8 dots/mm</i>
Printing Speed	<i>Max 85 mm/s</i>
Paper specifications	<ul style="list-style-type: none"> <i>Width 58 mm</i> <i>Roll Max Diameter 30 mm</i>
Battery	<i>Rechargeable lithium-ion battery 3.7V, 2600 mAh</i>
Operating Environment	<i>Temperature: from 0°C to 40°C Humidity: from 35% to 85% RH</i>
Storage Environment	<i>Temperature: from -20°C to 50°C Humidity: from 10% to 90% RH</i>
Dimensions L x H x W (mm)	<i>113.85 x 65.9 x 83.25</i>
Weight (gr.)	<i>372</i>



Use only original equipped AC/DC Adapters:

SN-W180G00500300U3 – US version

SN-W180G00500300E3 – EU version

SN-W180G00500300B3 – UK version

SN-W180G00500300A3 – AU/NZ version

Attach only NYC1 or NYC1-SCR readers to charging pins. Do not attach any another device to the NYC1 Dock + Printer!

GENERAL VIEW

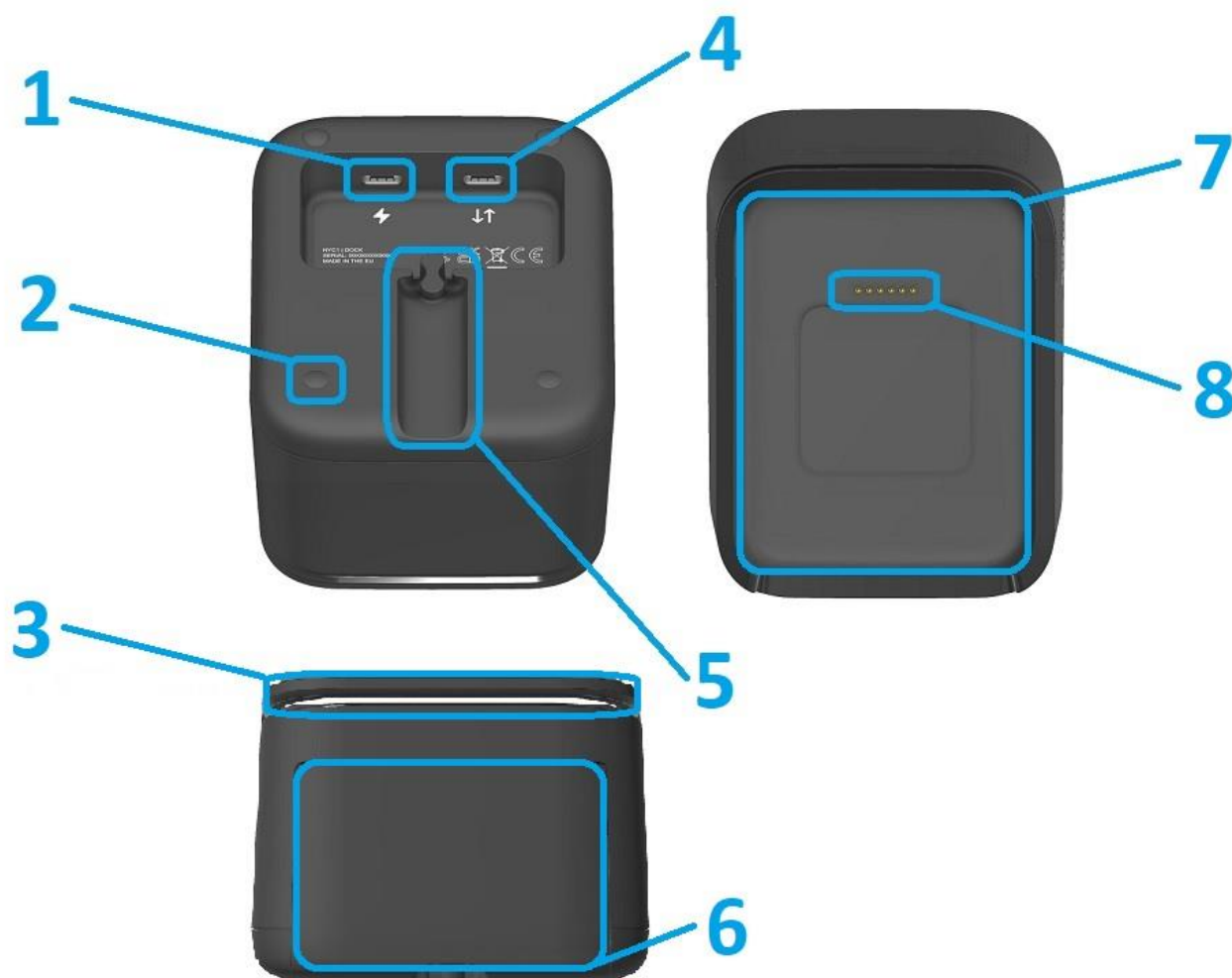


Figure 1

1. Input Power supply USB connector
2. Rubber feet
3. Opening for magnetic cards when is attached NYC1 reader
4. Communication and output power supply USB connector with COTS
5. Channel for USB cables
6. Paper Cover
7. Magnetic cradle for NYC1 readers
8. Charging pins

GETTING STARTED

The power supply for NYC1 Dock + Printer must be delivered from USB type-C connector labeled with “Flash” sign (Figure 2). Please refer to “General View” for correct location of that connector. After providing power to that power the rechargeable Li-Ion battery of NYC1 Dock + Printer is started to charge.

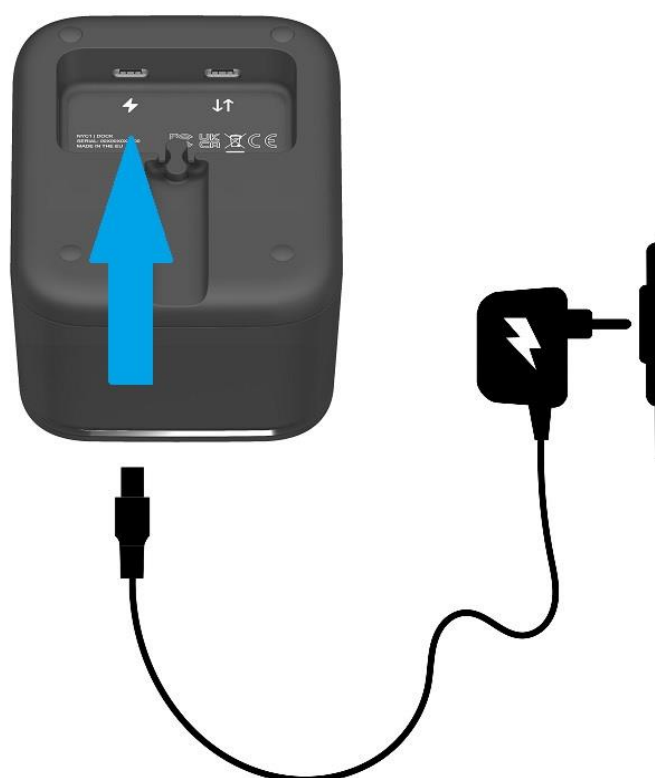


Figure 2

OPERATING MODES

Preparing for work NYC1 Dock + Printer

For Attaching the COTS (for example that can be tablet, smart phone and etc...), must be used second USB type-C connector (Figure 2), labeled with up/down arrows. Please refer to “General View” for correct location of that connector. When is attached the USB cable between NYC1 Dock + Printer and COTS, then COTS can be charged and communicate with Dock + Printer and NYC1 reader.

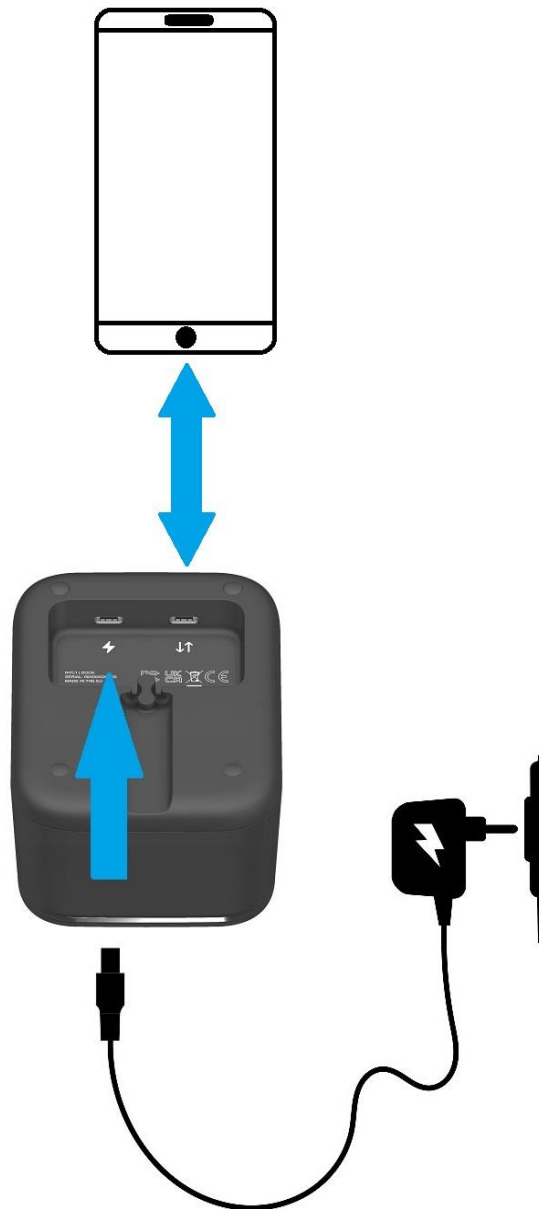


Figure 3

For attaching NYC1 reader to NYC1 Dock + Printer, charging pads of the NYC1 reader must be positioned(faced) correctly to the magnetic cradle of NYC1 Dock + Printer (Figure 4).



Figure 4

Then attach the NYC1 reader to the magnetic cradle of NYC1 Dock + Printer. The magnets will hold the NYC1 reader to the cradle of NYC1 Dock + Printer (Figure 5).



Figure 5

Charging status is indicated from NYC1 reader. When is fully charged the NYC1 reader all 4 green LEDs on reader will light up continuously. For getting the charged NYC1 reader, must be taken out (by pulled out from the smart card side) from the magnetic cradle of NYC1 Dock + Printer (Figure 6).



On the COTS device must be installed special application for working with NYC1 Dock + Printer. For more information, please contact your distributor.



Figure 6

Replacing of the paper roll

NYC1 Dock + Printer is equipped with a printing mechanism. For replacing the paper roll must be open the paper cover by pressing it with fingers on the down side (Figure 7). Then open complete the paper cover as is shown on Figure 8.



Figure 7

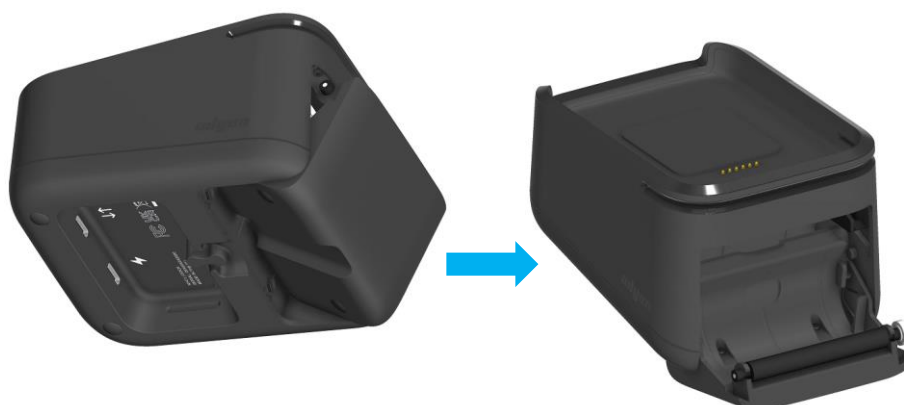


Figure 8

Insert the new paper roll, the thermal layer of the roll must be facing up. Then unroll some paper (Figure 9).

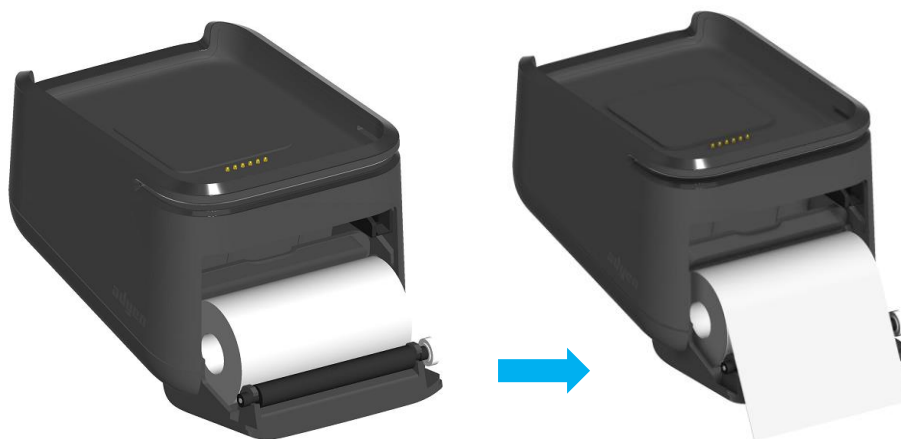


Figure 9

After that the paper cover must be closed by pushing it on top side, until complete closing (Figure 10).



Figure 10

Using the WiFi connection. STA and AP modes.

NYC1 Dock + Printer is WiFi module. This module can operate at STA or AP.



On the COTS device must be installed special application for working with NYC1 Dock + Printer. For more information, please contact your distributor.

STA mode – Wireless connection can be used instead wired connection between COTS and NYC1 Dock + Printer.

First the NYC1 Dock + Printer must be configured for connecting to existing network. This can be done by installing the special application on COTS. After providing power supply to NYC1 Dock +

Printer, the COTS device must be attached via USB cable to the NYC1 Dock + Printer. After running the application, select “Change network settings” and enter correct settings of network which need to be connected (Figure 11). Enter SSID and Password of the network, then select DHCP or Static(by removing the tick) addresses and press “OK”. Restart the printer by removing the power and run the special application again. Press on “Read Parameter” and on the screen will be shown information for the Printer include the WiFi address.

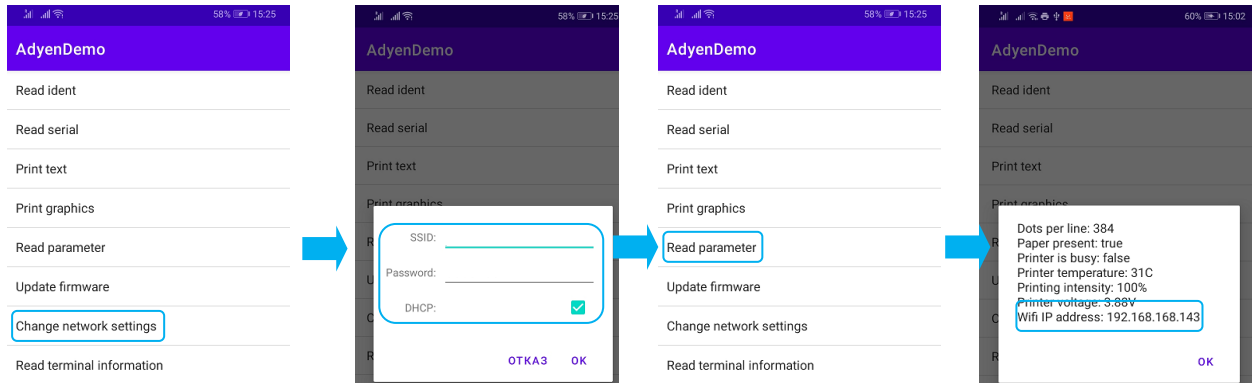


Figure 11

Detach the USB cable between COTS and Printer. Press on the button for selecting device and select “Connect to printer” (Figure 12). Then will be shown screen for entering “IP” address and “Port”, after that press “OK”. The COTS and Printer must be connected to the same network.

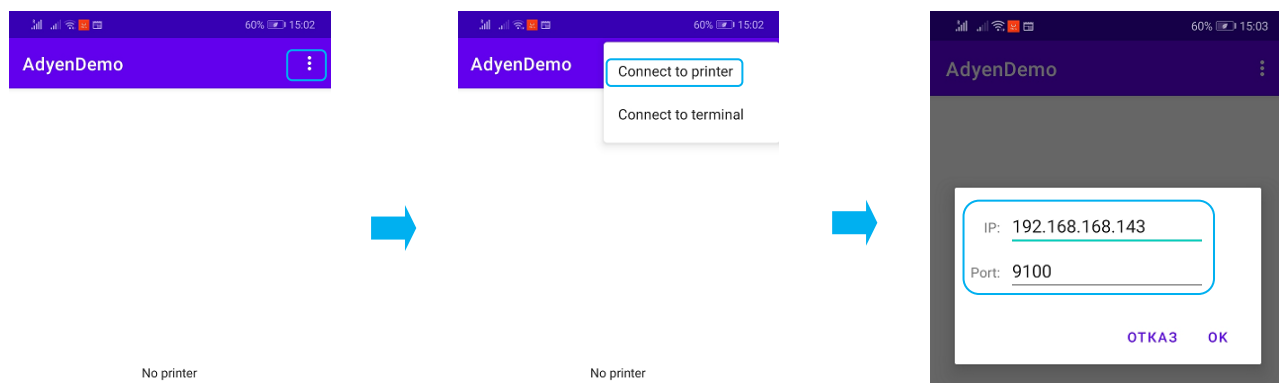


Figure 12

AP mode – Then the printer can work as router. For starting the AP mode, must be removed the power supply from printer. Paper cover must be open described in section “Replacing of the paper roll”, then need to be hold the hidden button (Figure 13) and providing power supply at same time. After that must be pressed the button.



Figure 13

Open WiFi setting on COTS device and select network “AdyenPrinter”. After successfully connection need to be run the application on COTS device. Press on the button for selecting device and select “Connect to printer” (Figure 14). Then will be shown screen for entering “IP” address and “Port”, after that press “OK”. Enter IP address “192.168.0.1” and “Port” number 9100. Then press on “OK” for connecting to NYC1 Dock + Printer.

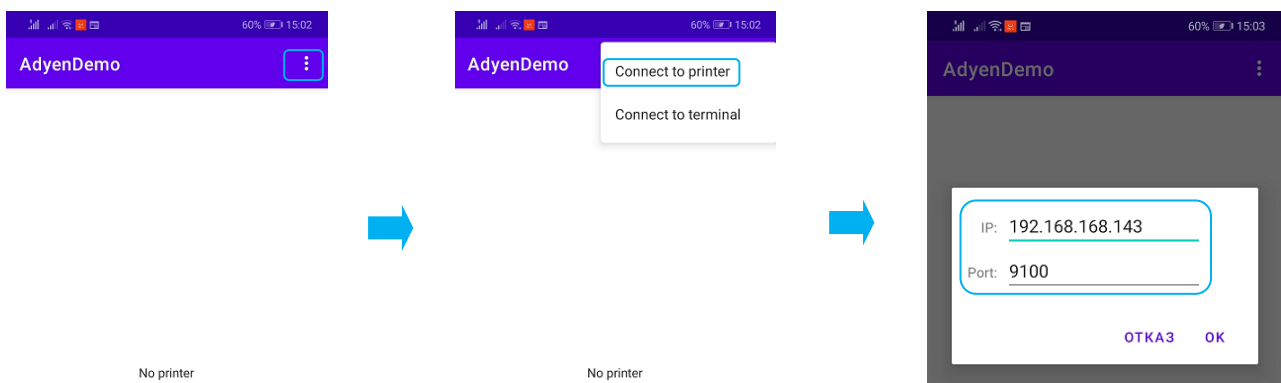


Figure 14



When the NYC1 Dock + Printer is used in AP mode, if there is already correct configuration for STA, could be used on modes at same time (AP+STA).

CARE, MAINTENANCE AND WARRANTY



- Keep the NYC1 Dock + Printer outside of the reach of small children.
- Keep the NYC1 Dock + Printer dry. Precipitation, humidity and liquid contain minerals that will corrode electronic circuits.
- Do not use or store it in dusty or dirty areas.
- Do not drop or knock on the NYC1 Dock + Printer.
- Do not short the charging pins.



- Do not open the NYC1 Dock + Printer. Only qualified personnel can open the device and make repairs. If the charger is not working, please contact your dealer.
- Allowing unqualified personnel to service your NYC1 Dock + Printer may result in damage to your NYC1 Dock + Printer and will void your warranty.

SERVICE AND SUPPORT

Service and Support:

For NYC1 Dock + Printer problems, product service, and repair information, contact your local Adyen representative or service provider.

- International – Contact your local Adyen distributor

Service Returns:

All customers, please contact your local Adyen NV representative or distributor for assistance with your service, return, or replacement.