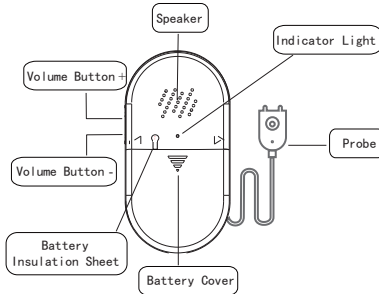
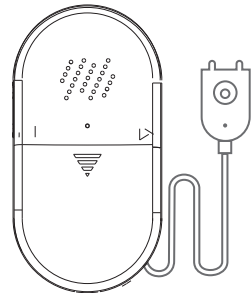


User Manual

Thank you for choosing our water leak detector. Please read this manual carefully before using the device for the first time and keep it for future reference.

I. Package Contents:

- User manual ×1
- Water leak alarm ×1
- Double-sided tape ×1



II. Installation

Stick the main unit in a suitable position using double-sided tape, and install the probe where water needs to be detected.



III. Technical Specifications

| | |
|--------------|------------------|
| Decibel | 120dB |
| Battery | 2 AAA Batteries |
| Standby Time | 1 Year |
| Weight | 96g |
| Size | 11cm*8.5cm*2.8cm |

IV. Function Description:

1. Volume increase: Press the " " button to raise the volume (max 120dB)
2. Volume decrease: Press the "M" button to lower the volume (min 0dB/mute)
3. Water detection: Alarm sounds and light flashes when probe contacts water, stops when removed

WiFi Configuration Guide

Important Notice: This product only supports 2.4GHz WiFi network configuration. If your router combines 2.4G/5G dual-band into one SSID, the connection may fail. In case of failure, please access your router settings to disable dual-band unification and enable separate 2.4GHz WiFi for configuration. You may re-enable dual-band after successful connection.



Preparation: Take the alarm near the router, turn on Bluetooth and location services on your phone, connect to the router's 2.4G WiFi network, then search for "Tuya Smart" in Google Play or App Store, download and install the Tuya Smart APP. After installation, follow the steps below to configure the network.

Network Configuration Steps: Step①: Open the Tuya Smart APP, register and log in with email. When prompted for notifications, location, Bluetooth, and device discovery permissions, select "Allow" for all. Step②: Click "Add Device" on the APP interface to enter device search. Then remove the battery insulation tab from the alarm. After about 5 seconds, the alarm's blue light will flash continuously indicating network configuration mode. Click "Add" when the device is discovered. Step③: After clicking "Add", you will be prompted to enter WiFi password. Please ensure correct capitalization and special characters when entering your WiFi password, otherwise the addition will fail.

Function Introduction: Enter the alarm interface to view the door/window open and close status and history records. Click on the settings below to view the alarm battery level and choose whether to enable water leakage reminders and low battery reminders (recommended to enable).

Sharing method: Install the Tuya Smart app on your family member's or friend's phone and log in with their email. Then on your phone, go to the alarm page, click the edit button in the upper right corner, find Share Device, share it to the Tuya account, and enter your family member's or friend's email.



Warm Reminders

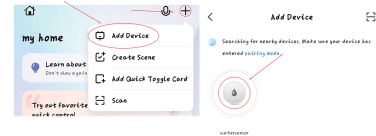
After the alarm is connected to WiFi, your mobile app can receive water leakage alerts anytime and anywhere. App notifications are free for life, provided you enable background operation permission, disable power-saving mode, enable auto-start, keep the app running in the background, and turn on permissions such as sound, vibration, lock screen notifications, etc. Also, turn on screen wake for notifications and disable Do Not Disturb mode. Below are the setup methods for mainstream mobile phones (descriptions may not be completely accurate and depend on your phone model).

Android phones: Settings — Application Settings — Tuya — Enable Auto-start — Change Power Saving Strategy to Unlimited — In Notification Management, enable all options, set all other options to Allow, enable Floating Notifications, Screen Display, Sound, and Vibration; finally, return to the home screen, swipe up to lock the Tuya app to prevent it from being cleared (description may not be completely accurate, specific details depend on phone model).

iPhone: Settings — Enter Tuya in the search box at the top — Set Location to Always — Enable Bluetooth, Local Network, and Home Data — In Wireless Data, select WLAN and Cellular Data — Enable all options in Notifications (Banner Style should be Persistent), and set Show Previews to Always. Then, return to the home screen, swipe down from the status bar to check if Focus Mode is enabled and turn it off if necessary. Finally, check if the side mute switch is on and turn off mute.

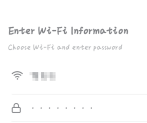


Tuya Smart APP Visual Guide

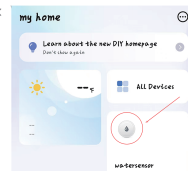


Step 1: Tap "+"
Step 2: Tap "Add Device"
(Please enable Bluetooth and WiFi)

Step 3: Tap the "Water Leak Sensor" icon



Step 4: Enter WiFi name and password
(Please select 2.4GHz WiFi)



Step 5: Device successfully added.
Tap to view device details



FCC Warning:

This equipment has been tested and found to comply with the limits for a Class B digital device, pursuant to part 15 of the FCC Rules. These limits are designed to provide reasonable protection against harmful interference in a residential installation. This equipment generates, uses and can radiate radio frequency energy and, if not installed and used in accordance with the instructions, may cause harmful interference to radio communications. However, there is no guarantee that interference will not occur in a particular installation. If this equipment does cause harmful interference to radio or television reception, which can be determined by turning the equipment off and on, the user is encouraged to try to correct the interference by one or more of the following measures:

- Reorient or relocate the receiving antenna.
- Increase the separation between the equipment and receiver.
- Connect the equipment into an outlet on a circuit different from that to which the receiver is connected.
- Consult the dealer or an experienced radio/TV technician for help.

Caution: Any changes or modifications to this device not explicitly approved by manufacturer could void your authority to operate this equipment.

This device complies with part 15 of the FCC Rules. Operation is subject to the following two conditions:

(1) This device may not cause harmful interference, and (2) this device must accept any interference received, including interference that may cause undesired operation.

This equipment complies with FCC radiation exposure limits set forth for an uncontrolled environment. This equipment should be installed and operated with minimum distance 20cm between the radiator and your body.