



KIN D 3.0

Connection Instructions

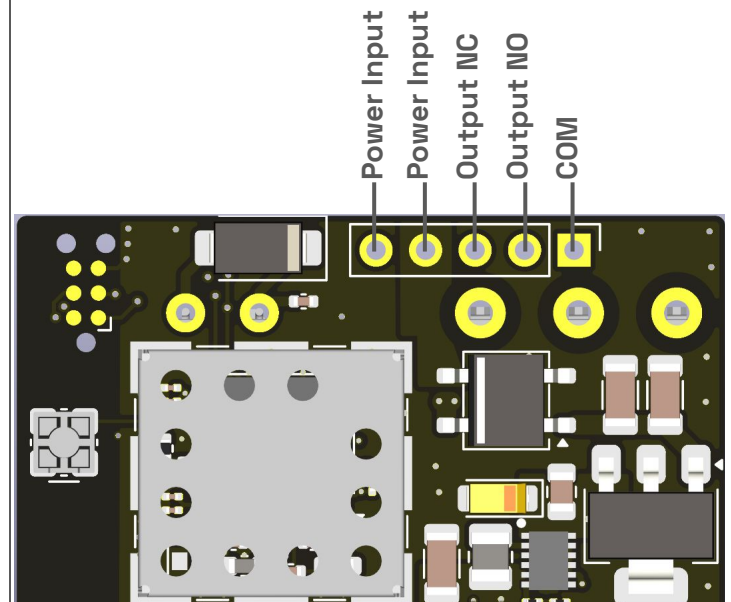
- Connect Power Supply to The Two **Power Input** Pins
- Connect positive wire of load power supply to the **COM** Pin
- Connect one wire from your load to the ground wire of your load power supply
- Connect the other wire from your load to one of:
 - **Output NC** pin for normally powered operation
 - **Output NO** pin for normally unpowered operation

Specifications

- Input Voltage: 6-24 VDC
- Output Max Voltage: 220 VDC
- Output Max Current: 2A
- RF Frequency: 2.4GHZ
- RF Max Gain: 3db
- RF Operating Range: 10m

For support, visit:
<https://www.kindoo.tech>

Connection Diagram



US Patent: US10325430

⚠ Install and wire in accordance with National Electrical Code, ANSI/NFPA70.

© 2025 KINDOO LLP. All rights reserved.

FCC

This equipment has been tested and found to comply with the limits for a Class B digital device, pursuant to Part 15 of the FCC Rules. These limits are designed to provide reasonable protection against harmful interference in a residential installation. This equipment generates uses and can radiate radio frequency energy and, if not installed and used in accordance with the instructions, may cause harmful interference to radio communications. However, there is no guarantee that interference will not occur in a particular installation. If this equipment does cause harmful interference to radio or television reception, which can be determined by turning the equipment off and on, the user is encouraged to try to correct the interference by one or more of the following measures:

- Reorient or relocate the receiving antenna.
- Increase the separation between the equipment and receiver.
- Connect the equipment into an outlet on a circuit different from that to which the receiver is connected.
- Consult the dealer or an experienced radio/TV technician for help.

This device complies with part 15 of the FCC Rules. Operation is subject to the following two conditions:

(1) This device may not cause harmful interference, and (2) this device must accept any interference received, including interference that may cause undesired operation.

Changes or modifications not expressly approved by the party responsible for compliance could void the user's authority to operate the equipment.

*RF warning for Mobile device:

This equipment complies with FCC radiation exposure limits set forth for an uncontrolled environment. This equipment should be installed and operated with minimum distance 20cm between the radiator & your body.

FCC ID : 2A7TP-KIND30