

# A3 英文说明书

## 85 x 65 mm



### A3 Charging Station

User Manual

**CAUTION:** For safe and efficient charging, use the included 18W quick charge adapter and cable. Otherwise, the charger may not charge three devices simultaneously or get damaged in the long run. For 15W wireless charging phones, you must switch to a 24W quick charge adapter.

#### Compatibility\* (IMPORTANT)

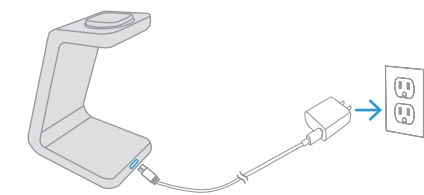
Compatible with	Max Power
iPhone 13/Pro/ProMax(13 mini not supported), 12/Pro/Pro Max(12 mini not supported), 11/Pro/ProMax, SE(2020), X, XR, XS/Max, 8/Plus	7.5W
Galaxy S21/20/10/9/8/7, Note 20/10/9/8/7/5 etc.	10W
Other Qi-compatible phones	5W
Apple watch Series 7/6/SE/5/4/3/2 (S1/Original not supported)	2W
Airpods Pro/3gen (or 2gen/1gen with wireless charging case*)	5W
Galaxy Buds+/live, Other earpods that support wireless charging	

\* Actual compatible device models may vary with new releases of upgrades. Please refer to the online product page for accurate information.  
\* Airpods 2gen/1gen does not come with wireless charging case. You need to purchase the special case from Apple separately.

#### Specifications

Input:	9V/2A, 9V/2.7A or 12V/2A
Input Interface:	Type-C port
Transmission Distance:	≤5mm
Conversion Rate:	≥73%
Product Size:	140x110x73 mm

#### Quick Setup

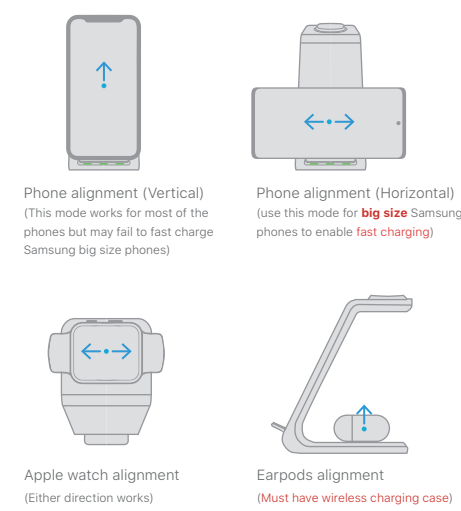


1. Connect the charger to power (AC100~240V 50/60Hz) Use the included adapter and cable and make sure they work.

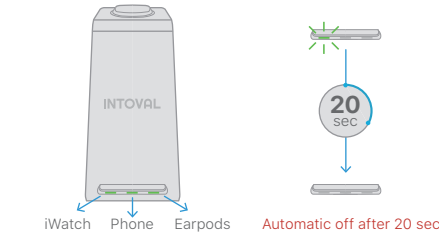
2. Place your devices on the charger \* Please place it in the center of the charger and keep it close.

\* The phone and earpods parts use magnetic induction to charge your device. Don't place anything between your device and the charger. Magnetic mounts, magnetic cases, or other objects between your device and the charger might reduce performance or damage magnetic strips or RFID chips like those found in some credit cards, security badges, passports, and key fobs. If your case holds any of these sensitive items, remove them before charging or make sure that they aren't between the back of your device and the charger. Also, avoid thick or multi-layer protective cases while charging.

#### Alignment



#### Indicator Light



- The lights work separately and indicate charging status.
- If no issue is detected, the light stays green(→) for 20 seconds and then goes off. The charger will continue charging the corresponding device to its full battery.
- If an issue is detected anytime, the light becomes flashing(→) immediately. The charger will not charge the corresponding device until the issue is resolved.

#### Troubleshooting Steps

It may save you time to first troubleshoot issues by following the instructions below before filing a warranty claim. And we apologize in advance for whatever inconvenience your Intoval purchase may have caused.

- 1. Phones/watches/earphones must be compatible with this wireless charger (Refer to Compatibility in this leaflet).
- 2. Use the included power adapter and cable. Make sure they work and are well connected.
- 3. Align the devices precisely and make sure they stay close to the charger. Take the devices away and then try realigning if necessary.
- 4. Avoid certain protective cases that are too thick(≥ 5mm), multi-layer, magnetic, metallic, battery-containing, with-grip, with-popsocket, etc. Try charging without case.
- 5. Better use it below 30°C. For protection phones and watches will stop wireless charging when the temperature goes high.

- 6. Upgrade your phone's or watch's OS and software to the latest version and then **RESTART** your phone or watch and **REPLUG** the charger to avoid charging glitches.
- 7. Indicator light flashing indicates an error (try realigning devices and ensure no foreign object is on the charger).
- 8. Try unplugging the charger and then plugging again

#### Warranty Claims

All products purchased from Intoval come with a hassle-free 365-day warranty. Contact our support to claim your warranty.

**30-Day Money-Back Warranty for Any Reason**  
Undamaged products may be returned for a full refund for any reason with 30 days of receipt of delivery.

**360-Day Warranty**  
For quality-related warranty claims, the item will be replaced with a new one.

#### 365-Day Warranty Claim Process:

- Buyer must provide sufficient proof of purchase
- Intoval must document buyer's troubleshooting results
- The visible proof depicting the defect is required
- It may be necessary to return an item for quality inspection

\* For detailed warranty info, please refer to <https://www.intoval.com/warranty>

**Register your E-warranty**  
Register your E-warranty (360 days) by writing your order id to [support@intoval.com](mailto:support@intoval.com). Once registered, you can claim your warranty efficiently without any verifications.

#### Contact Support

Whatever you need, we are here to help.  
[support@intoval.com](mailto:support@intoval.com)  
We will try our best to respond within 24 hours.  
If you prefer talking to us, please request a call back by email.

© 2021, Intoval Inc. All rights reserved. All product and company names are trademarks™ or registered® trademarks of their respective holders. The use of them does not imply any affiliation with or endorsement by them.

#### Safety Information

- Read this instruction carefully.
- Keep this instruction for later reference.
- All cautions and warnings should be followed.
- The rating of the equipment is 100-240Vac and 50/60Hz
- The rating of maximum output voltages and currents is 9Vdc/2A.
- The socket outlet shall be installed near the equipment and shall be easily accessible.
- Protect the power cord from being walked on or pinched.
- The equipment shall be used at a maximum 40C ambient temperature.
- Do not open the equipment to reduce the risk of electrical shock. For safety reasons, it is only allowed to be opened by qualified service personnel.
- Protect equipment from humidity.
- Disconnect equipment from the power supply before cleaning. Do not use any liquid or an aerosol cleaner. Use only moisture cloth.
- Equipment should be placed on a reliable surface. A drop or fall could cause damages.
- If the equipment is not used for a long time, disconnect the

equipment from the power supply to avoid damage by transient overvoltage.  
14. This equipment is intended to be operated under altitude up to 5,000m(24,606.3 feet)

This device complies with Part 15 of the FCC Rules. Operation is subject to the following two conditions: (1) this device may not cause harmful interference, and (2) this device must accept any interference received, including interference that may cause undesired operation

NOTE: This equipment has been tested and found to comply with the limits for a Class B digital device, pursuant to Part 15 of the FCC Rules. These limits are designed to provide reasonable protection against harmful interference in a residential installation. This equipment generates, uses and can radiate radio frequency energy and, if not installed and used in accordance with the instructions, may cause harmful interference to radio communications. However, there is no guarantee that interference will not occur in a particular installation.

If this equipment does cause harmful interference to radio or television reception, which can be determined by turning the equipment off and on, the user is encouraged to try to correct the interference by one or more of the following measures:

- Reorient or relocate the receiving antenna.
- Increase the separation between the equipment and receiver.
- Connect the equipment into an outlet on a circuit different from that to which the receiver is connected.
- Consult the dealer or an experienced radio/TV technician for help.

Warning: changes or modifications not expressly approved by the party responsible for compliance could void the user's authority to operate the equipment

#### Radiation Exposure Statement

This equipment complies with FCC radiation exposure limits set forth for an uncontrolled environment.

This equipment should be installed and operated with minimum distance 20cm between the radiator and your body.