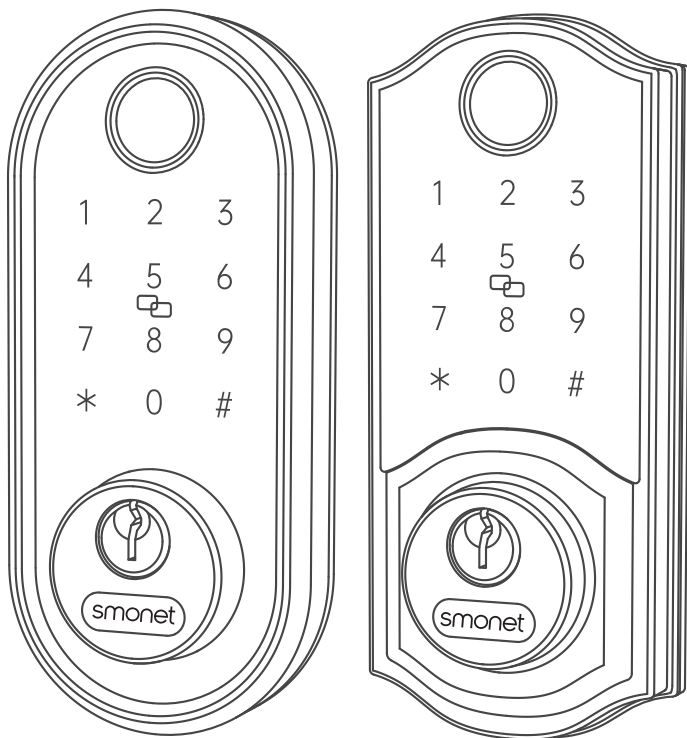


# Smart Lock Manual

## Electronic Keypad Deadbolt Lock

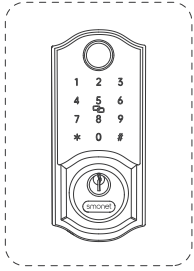




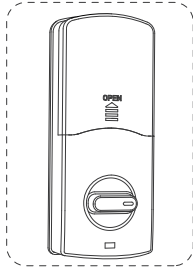
# DIRECTORY

<b>PACKAGE INCLUDED</b>	01
<b>INSTALL THE DEADBOLT LOCK</b>	02
<b>APP INSTRUCTION</b>	11
<b>OPERATION INSTRUCTION</b>	15
<b>CUSTOMER SUPPORT</b>	17

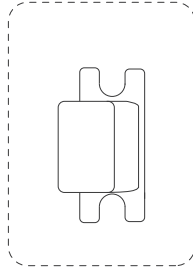
# 1.PACKAGE INCLUDED



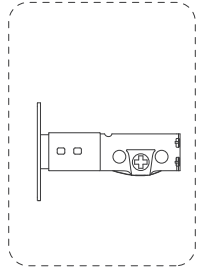
Touchscreen  
Assembly



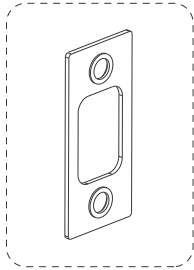
Inside Assembly



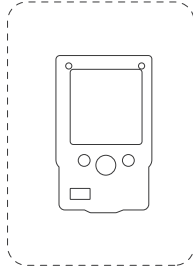
Strike Pad



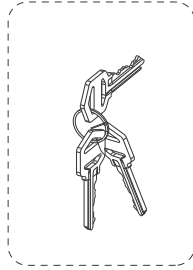
Bolt



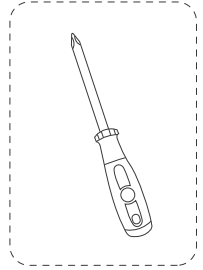
Strike Plate



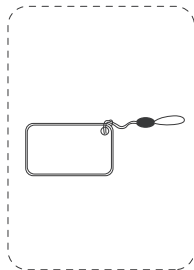
Backplate



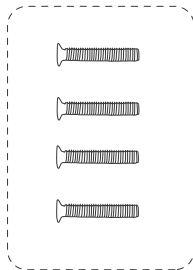
Physical Keys



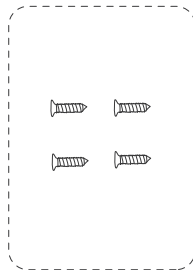
Phillips  
Screwdriver



IC Card



Inside Assembly/  
Backplate Screws



Bolt/Strike  
Screws



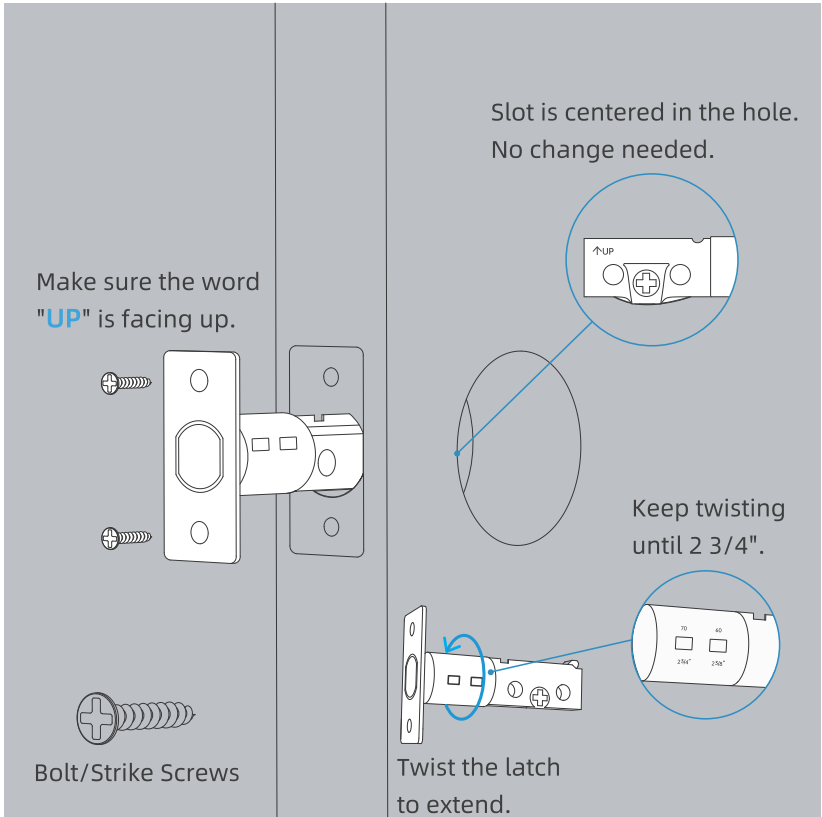
User Manual

## 2.INSTALL THE DEADBOLT LOCK

### Step1: Install the deadbolt

You may have to adjust your bolt length. Make sure the slot in the bolt is centered in the hole.

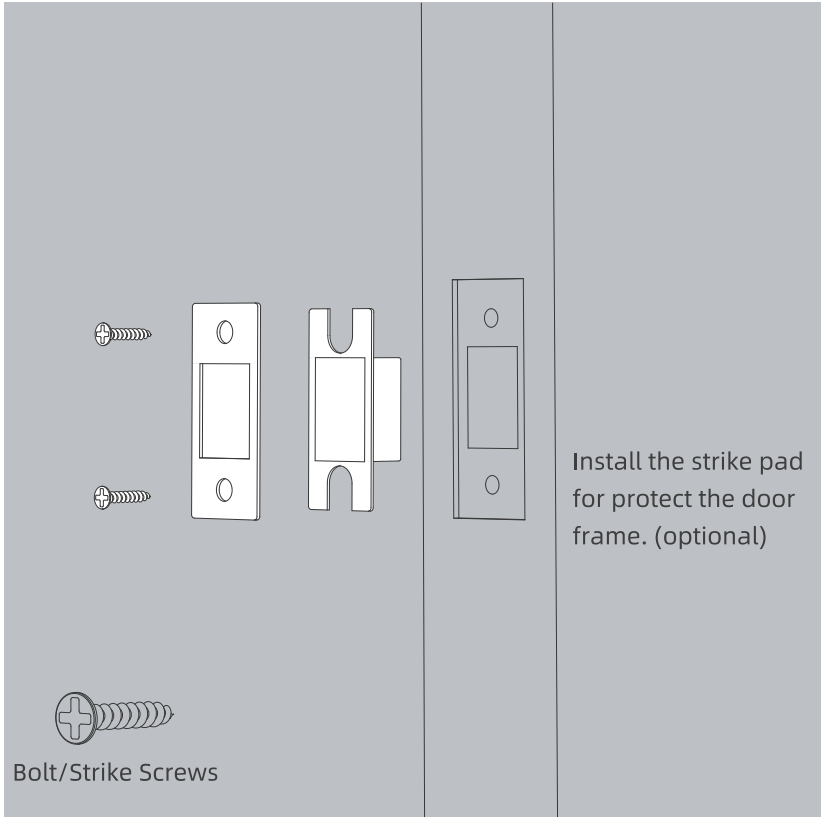
**Note:** Keep the deadbolt in unlock status during installation.



## 2.INSTALL THE DEADBOLT LOCK

### Step2: Install the strike

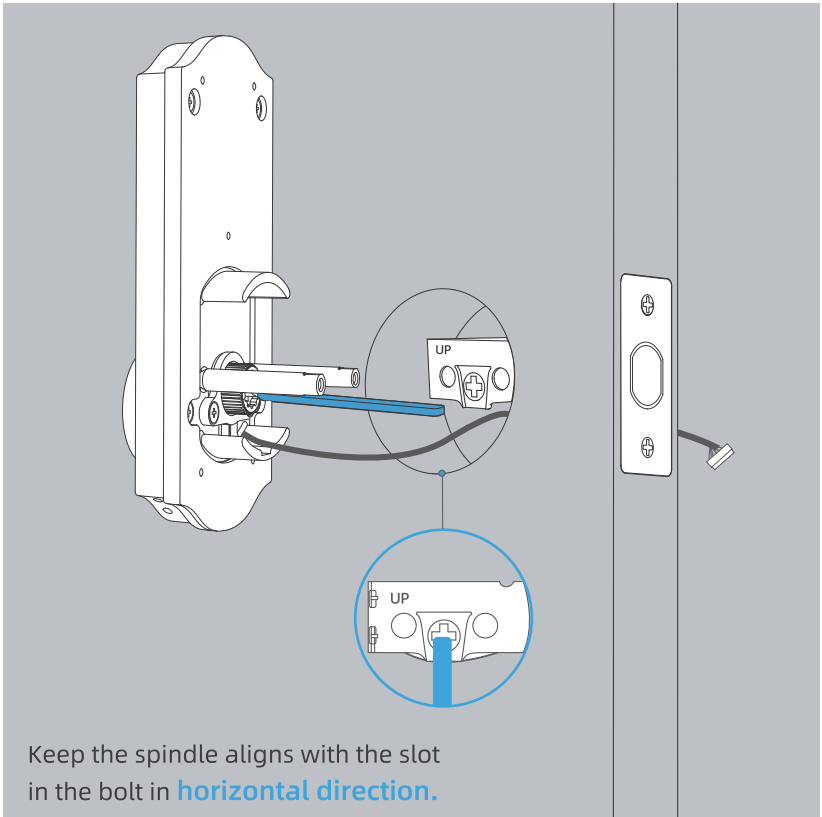
Put the strike plate and pad together and install it into the door frame.



## 2.INSTALL THE DEADBOLT LOCK

### Step 3: Install the touchscreen

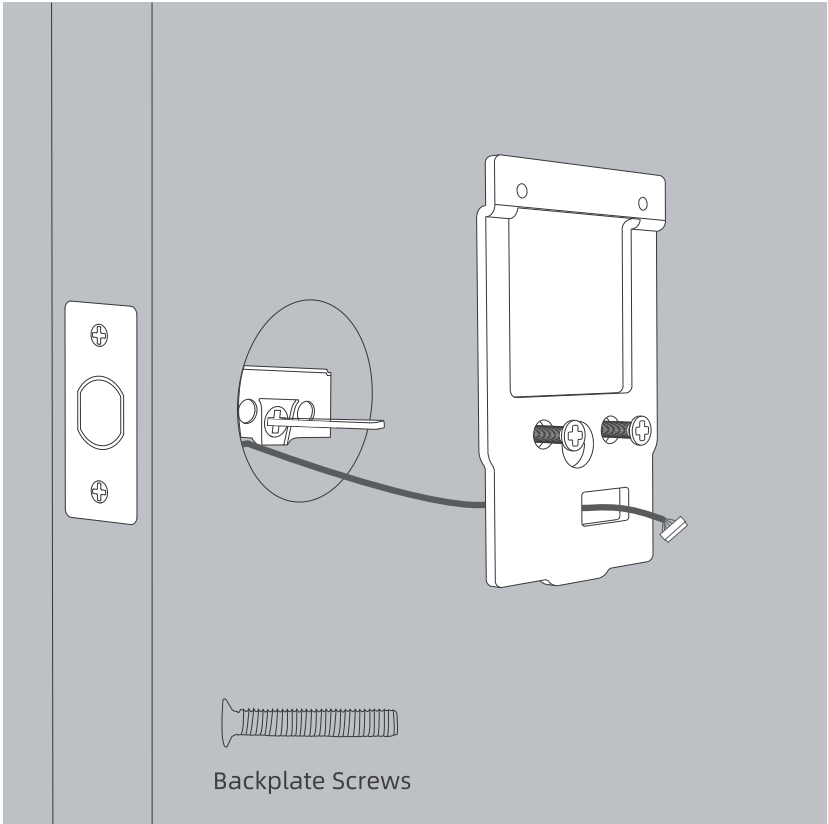
Route the cable through the door BELOW the bolt. Align the spindle as shown and push the touchscreen onto the door.



## 2.INSTALL THE DEADBOLT LOCK

### Step 4: Install the backplate

Route the cable under the bolt and through the hole on the bottom of the backplate. Secure the backplate with screws. Make sure the outside touchscreen is straight before tightening screws all the way.

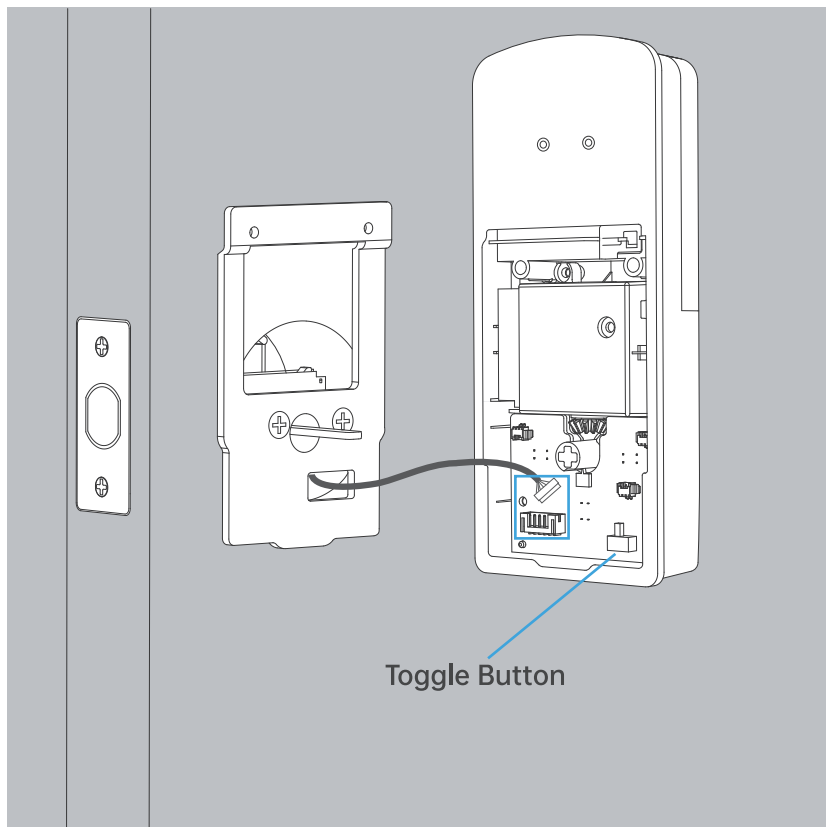




## 2.INSTALL THE DEADBOLT LOCK

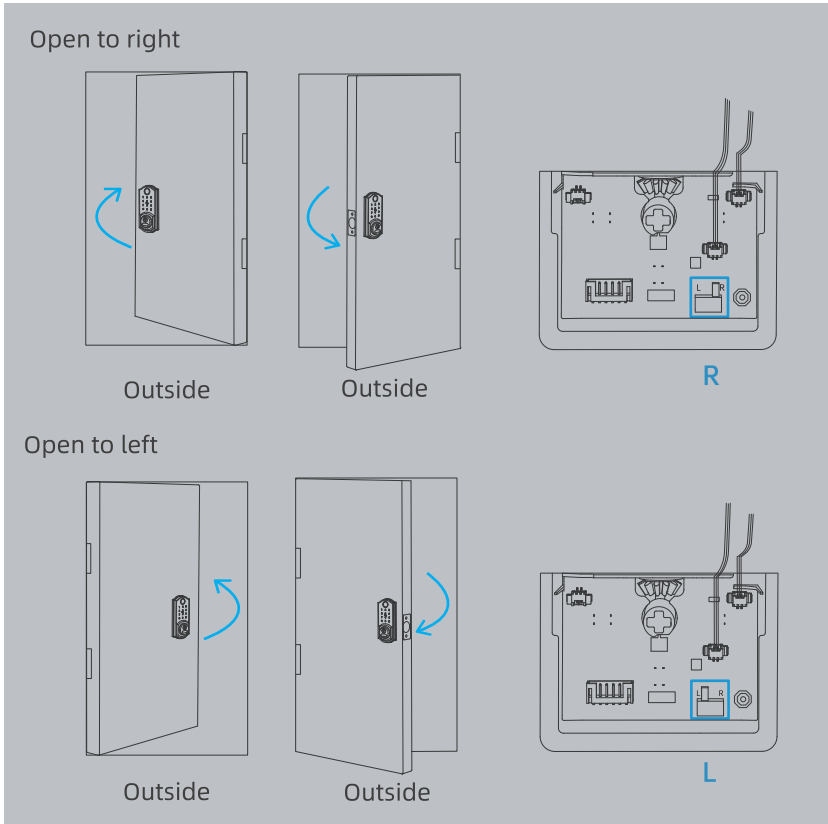
### Step 5: Connect the cable

Tuck the cable and connect to the connector on the mainboard.



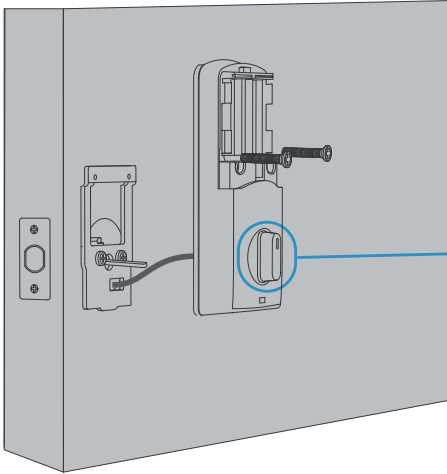
## 2.INSTALL THE DEADBOLT LOCK

**Step 6:** Facing to the keypad, check the door opening direction and set the switch button

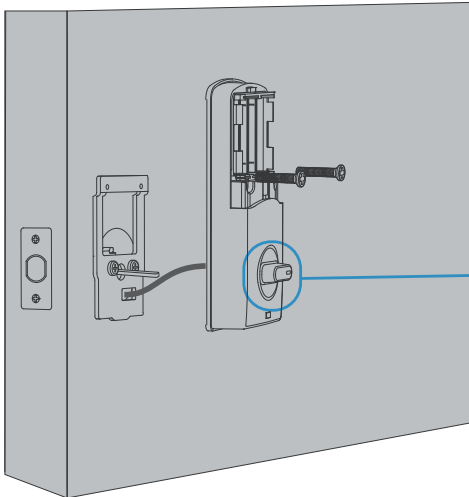


## 2.INSTALL THE DEADBOLT LOCK

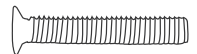
**Step 7: Set knob direction and secure the lock to the door.**



Knob is vertical  
for right opening



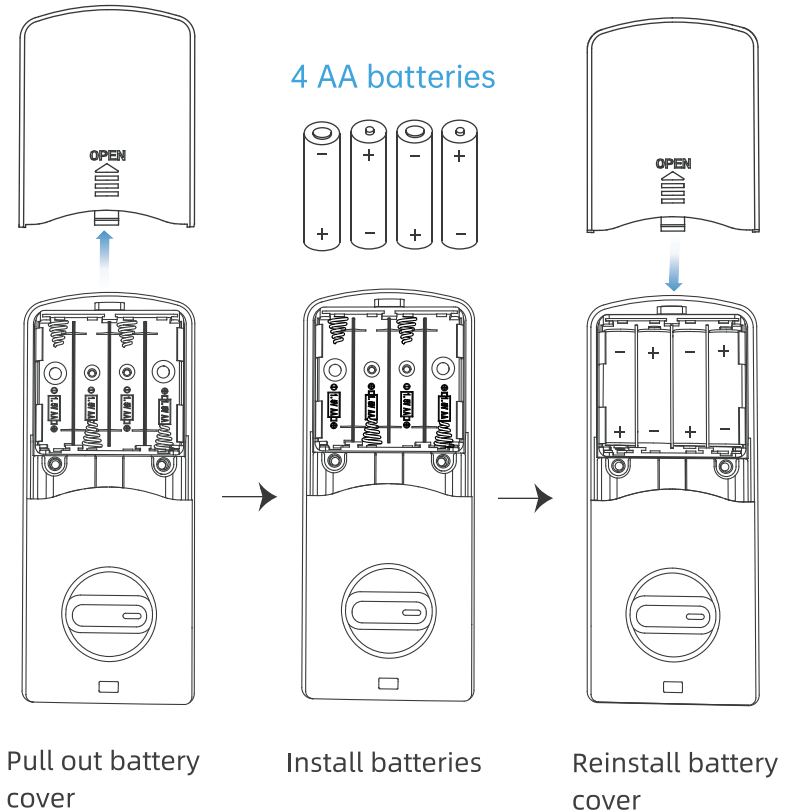
Knob is horizontal  
for left opening



Inside Assembly  
Screws

## 2.INSTALL THE DEADBOLT LOCK

### Step 8: Install batteries and slide the cover on

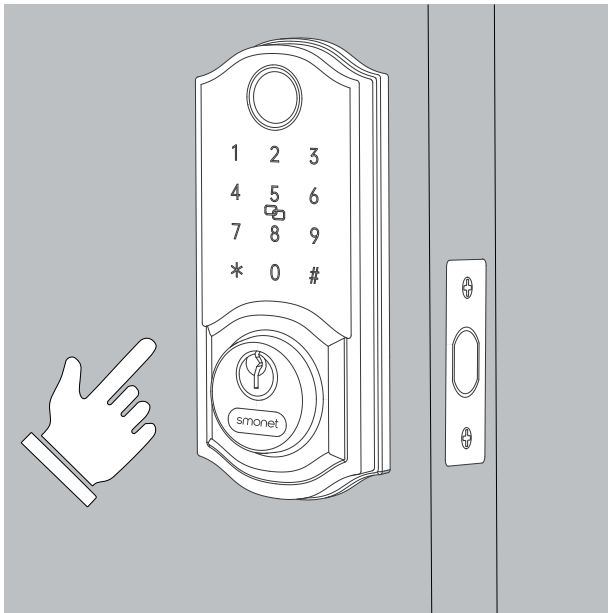


## 2.INSTALL THE DEADBOLT LOCK

### That wasn't so bad, was it?

Your lock is now installed! Let's do a final test!

1. Close your door.
2. Extend and retract the bolt using the inside knob.
3. Make sure the bolt retracts smoothly.
4. Open your door.
5. Press the **# sign** for two seconds for **locking**.
6. Now enter a manager user code **123456 #** for **unlocking**.



## 3. APP INSTRUCTION

### Add Lock

1.

Android: Please search Next lock or TTLock in Google Play

iOS: Please search Next lock or TTLock in APP Store

2. Register your own account to log in.



Next lock



TTLock

3. Matching steps:

1



Tap the + on the screen

2



Choose **Door Lock**

3



Press the keypad and  
tap + on the right

4

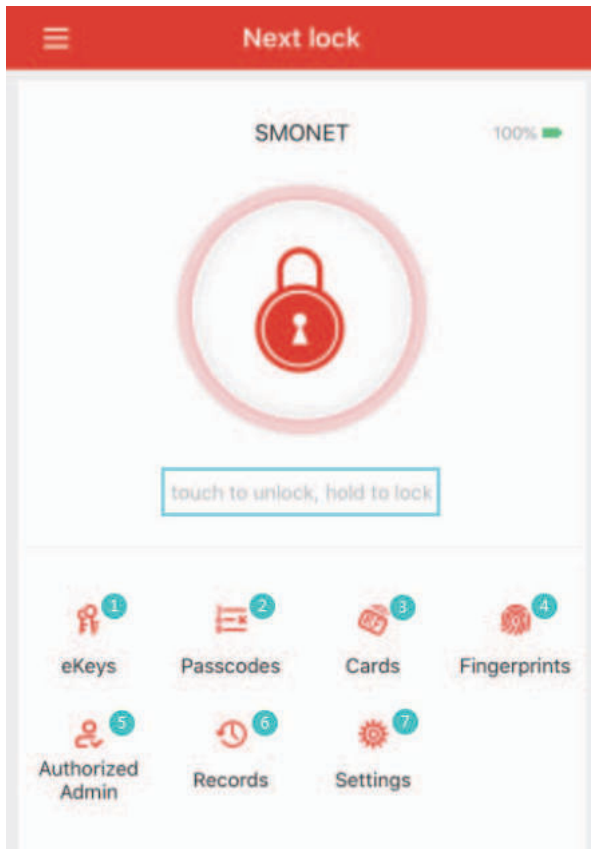


Please double check your  
door opening direction

**Note:** Please try to reset if the lock cannot be paired (in gray color or no locks found) please check page 16.

## 3. APP INSTRUCTION

Please feel free to contact us if you need help.



**Lock/Unlock:** Enable the bluetooth, touch to unlock, hold to lock.

## 3. APP INSTRUCTION

**Note:** You need to pair a G2 Gateway if you want to enable the Remote Unlock/Alexa/Google Home (Sold separately).

**(1) eKeys:** To share your lock/unlock feature with others by APP, and manage eKeys.

**Note:** Recipients need to have an APP account.

**(2) Passcodes:** Generate and edit different types of random passwords.

**Note:** You need to be near the door lock while editing.

Please use within the prescribed time limit according to the reminder.

**(3) Cards:** To pair or edit IC cards (Included).

**(4) Fingerprint:** To add or edit Fingerprints.

① To increase the accuracy, please record your fingerprint more than once, covering every edge of the fingerprint.

② The loops and whorls on some fingerprints may not be deep enough to be identified, please try different fingerprints to make it work.

③ Please press and cover the whole fingerprint when you put your fingerprint on the sensor.

**(5) Authorized Admin:** To create Admin e-key. In addition to lock / unlock, recipients will have the editing permission of the lock.

**Note:** Recipients need to have an APP account.

**(6) Records:** Check all the operations through Keypad or APP (Physical Keys or Knob will not be included).

**(7) Settings:**

① Basics: Query and edit the initial admin password of the keypad, and more personalized settings.

② Door Sensor(Sold separately): Detect the lock status with a Gateway (sold separately).

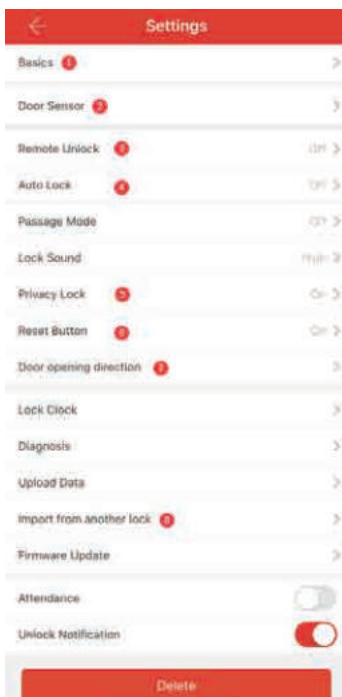


## 3. APP INSTRUCTION

- ③ Remote Unlock: Allows to unlock remotely via Gateway (sold separately) even when far away from the lock.
- ④ Auto Lock: The lock will lock automatically after the time.
- ⑤ Privacy Mode: enable/disable the secure locks button (under the thumb turn piece).

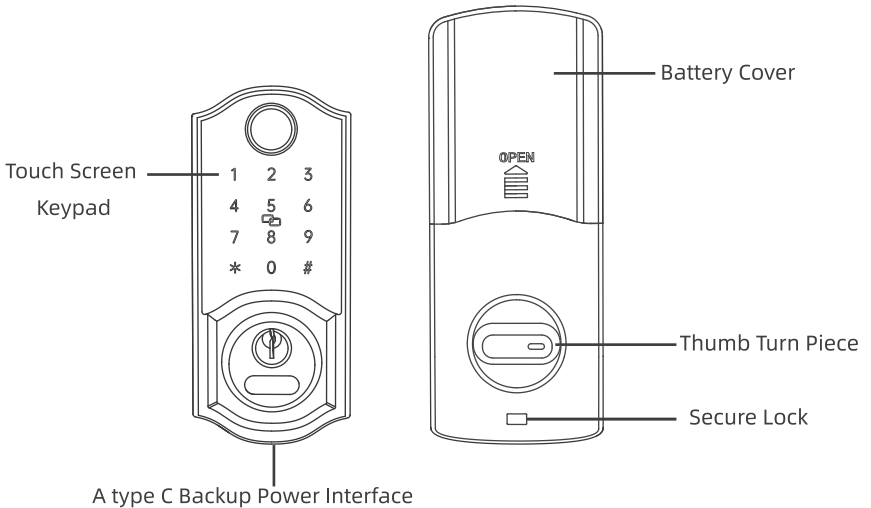
Secure locks: All guest passwords will expire. Unlock once to release.

- ⑥ Reset Button: Please make sure it's ON before you reset the lock by long pressing.
- ⑦ Door opening direction: Please check here if Lock/Unlock is opposite.
- ⑧ Import valid ekeys, passcodes, cards from another lock (no fingerprints).



## 4. OPERATION INSTRUCTION

Please keep the door open while testing and programming the smart lock in case of being locked out accidentally.



**Default Admin Passcode: 123456 (When not paired with phone)**  
**Unlock on the keypad: Enter your passcode and #**  
**Lock on the keypad: Long press #**

### **Settings Admin Passcode via Keypad:**

Enter \*12 #123456# Custom admin passcode # Conform admin passcode # on the keypad.

**Note:** It's only work when the lock has not been pair to app.If failed, please pair the lock to app and set it up. (Page 11)

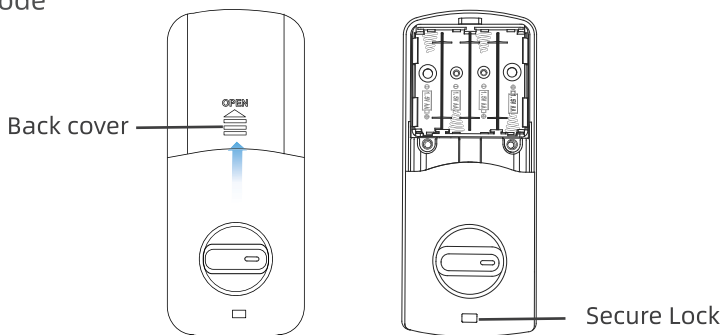
## 4. OPERATION INSTRUCTION

### Reset

Please reset you lock if pair failed.

#### Method 1:

- 1)Take out 1 battery, wait 5s, put the battery back.
- 2)Long press the Secure button for 10s.
- 3)Input 000# on the keypad after hear "Please input the initialization passcode"



**Note:** If you have paired the lock and need to reset it, please delete the lock from Next lock as per the following steps:

Click on 'menu' icon on the upper left corner---Click 'Settings'---  
Click 'Transfer Locks'---Click 'Move Faulty/Damaged Locks to Trash'  
(in the bottom right corner).

#### Method 2:

Please check the link below about how to reset.

[https://youtu.be/ZN6EsA\\_aj9c](https://youtu.be/ZN6EsA_aj9c)

## 4. OPERATION INSTRUCTION

---

### **Secure Lock**

Lock the door from inside by hold the deadbolt button for 2s.

**Note:** All guest permissions will be invalid, including all fingerprints, passcodes and IC cards, but you can still use the Admin passcode and admin app account to unlock, and the secure lock will be turned off. To turn off the secure lock from inside manually. Please rotate the turn piece or press the secure lock button.

## 5.CUSTOMER SUPPORT

---

Please feel free to contact us if you have any questions about the function. Or need more information about Gateway/Door sensor

## **FCC regulatory conformance:**

This device complies with Part 15 of the FCC Rules. Operation is subject to the following two

### **conditions:**

- (1) This device may not cause harmful interference.
- (2) This device must accept any interference received, including interference that may cause undesired operation.

**NOTE:** This equipment has been tested and found to comply with the limits for a Class B digital device, pursuant to part 15 of the FCC Rules. These limits are designed to provide reasonable protection against harmful interference in a residential installation.

This equipment generates uses and can radiate radio frequency energy and, if not installed and used in accordance with the instructions, may cause harmful interference to radio communications. However, there is no guarantee that interference will not occur in a particular installation. If this equipment does cause harmful interference to radio or television reception, which can be determined by turning the equipment off and on, the user is encouraged to try to correct the interference by one or more of the following measures:

- Reorient or relocate the receiving antenna.
- Increase the separation between the equipment and receiver.
- Connect the equipment into an outlet on a circuit different from that to which the receiver is connected.
- Consult the dealer or an experienced radio/TV technician for help

**NOTE:** The manufacturer is not responsible for any radio or TV interference caused by unauthorized modifications to this equipment. Such modifications could void the user's authority to operate the equipment.

### **RF Exposure**

This equipment complies with FCC radiation exposure limits set forth for an uncontrolled environment. This equipment should be installed and operated with minimum distance of 20 cm between the radiator and your body. This transmitter must not be co-located or operating in conjunction with any other antenna or transmitter.