

6 VOLT BATTERY-POWERED POLICE CAR

18-36 M

- Parental guidance and supervision are required at all times.
- Please keep this manual and all information relating to this product for future reference.

BEFORE YOU BEGIN PLAY

⚠ WARNING:

Remove all packing material ties and dispose of them before giving toy to child.

ESTIMATED CHARGING TIME

Initial charging can take approximately 10 hours.

(Never charge the battery longer than 8 hours after initial charge.)

⚠ WARNING:

DO NOT USE NON-ORIGINAL OR NON-RECOMMENDED PRODUCTS WITH YOUR 6-VOLT BATTERY-POWERED POLICE CAR.

Altering of the original components or use of non-recommended replacement parts may or may not be compatible with the design and may cause an unsafe condition resulting in serious injury or death.



POWER SUPPLY CONNECTION

NOTE: The battery is disconnected for shipment to prevent the battery from draining.

BATTERY CHARGING

IMPORTANT!

Before first time use, please fully-charge the battery for 10 hours. Charge the battery after each use of the vehicle, regardless of how long the vehicle was used. Do not charge the vehicle for more than 8 hours at each charge after first use. Never charge the battery longer than 8 hours. Overcharging or undercharging the battery may shorten battery life and decrease vehicle running time.

⚠ **WARNING:** Battery can fall out and injure a child if the vehicle tips over. Always use battery retainer.

IMPORTANT NOTES:

- We recommend that you start charging your battery before playing with your new 6V Battery-Powered Police Car.
- The charger is not a toy. Please keep away from children.
- Do not short-circuit the battery.
- You do not need to remove the battery from your vehicle to recharge it.
- Before charging the battery, examine the battery case for cracks and other damage which may cause sulfuric acid (electrolyte) to leak during the charging process. If damage is detected, do not charge the battery or use it in your vehicle. Battery acid is very corrosive and can cause severe damage to surfaces it contacts.
Take precautions to protect the surface on which you charge your battery.
- Use only with charger provided with the toy.
- NOTE TO ADULTS: Regularly examine the charger for damage to the cord, plug, or other parts that may result in the risk of fire, electric shock or injury.
- If your battery is old and will not accept a charge, do not leave it in the vehicle. Always remove a dead battery from the vehicle.
- Charge the battery at least once per month, even if the vehicle has not been used.

NOTES:

- This product has CHARGING PROTECTION: when charging, the vehicle cannot be operated to go forward as this function will be cut off.
- Recharge after initial charge- up to 10 hours, and never charge the battery longer than 14 hours.
- When the vehicle begins to run slowly, recharge the battery.
- Charge after each use or charge once a month at a minimum recharge time of 10 hours, never more than 14 hours.

⚠ **WARNING:** Use the charger in dry locations only.

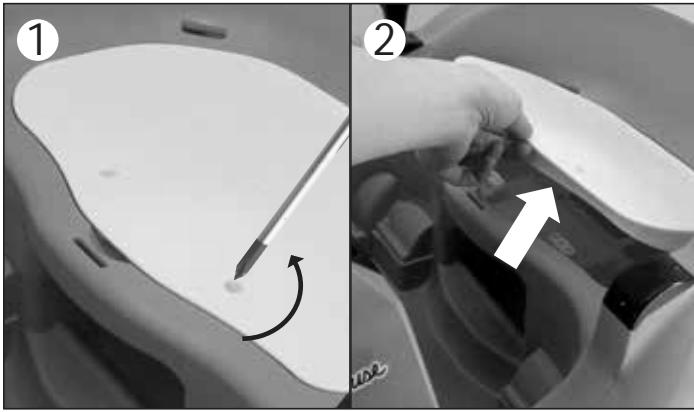
- Colors and specifications may vary from the product shown on this packaging.

Manufactured by:
DONGGUAN INNOTECH JINGLI LIMITED

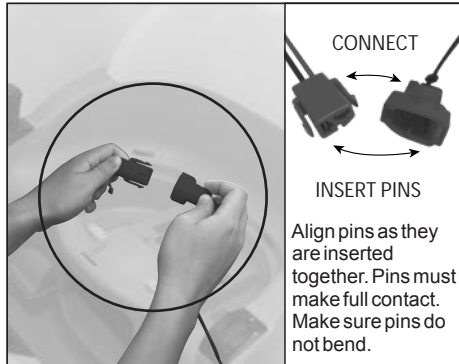


Made in China
Item No.062547

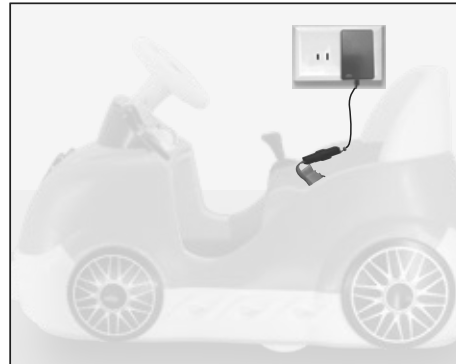
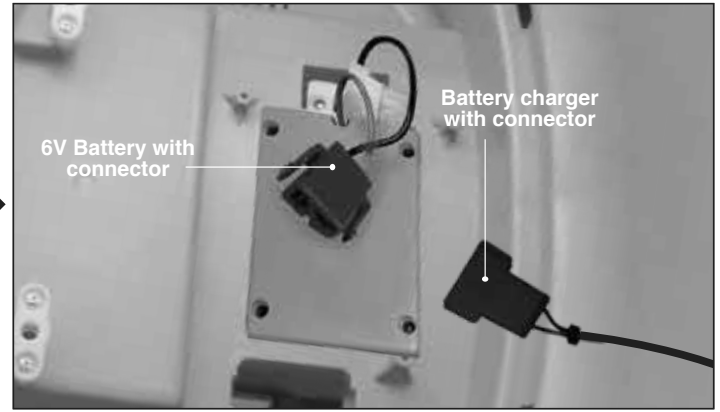
HOW TO CHARGE YOUR 6V BATTERY-POWERED POLICE CAR



1. Use Philips screwdriver to unscrew the seat cover. Lift seat cover to open. Battery with connector is located inside seat, and the battery charger is stored inside seat.

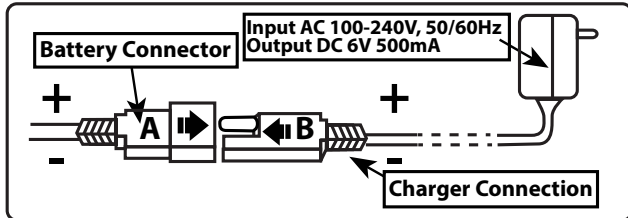


2. Connect the battery connector from the electric ride-on with the connector from the charger. Align pins as they are inserted together. Pins must make full contact. Make sure pins do not bend.



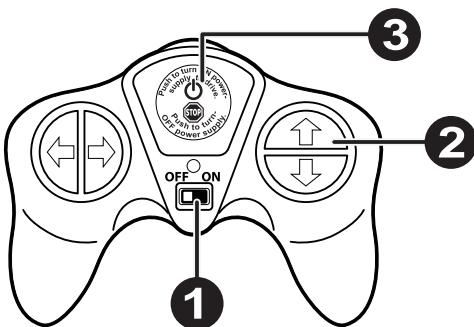
3. Plug the charger plug into a wall outlet. The battery will begin charging with a red light on.

4. Once the vehicle is fully charged, unplug the charger and put it away in a safe place.
KEEP ALL CHARGERS AWAY FROM CHILDREN. USE THE CHARGER IN DRY LOCATIONS ONLY.
 5. Plug the battery connector into the power connector. Your 6-volt Battery-Powered Police Car is now ready for play.



Do not store the battery in temperatures above 75°F (23.5°C) or below 32°F (0°C).

HOW TO USE YOUR 2.4G REMOTE CONTROL



1	OFF ON 	Slide ON / OFF Switch to start pairing your 2.4G remote control with your 6-Volt Battery-Powered Police Car.
2		Press directional arrows to select where you want to drive your 6-Volt Battery-Powered Police Car.
3		Emergency ON / STOP Power Button to start or stop your 6-Volt Battery-Powered Police Car.

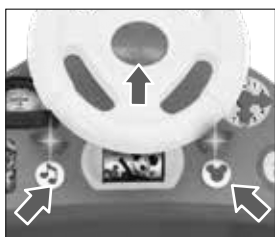
4. Your 6-Volt Battery-Powered Police Car comes with a 2.4G remote control for parents to operate the Police Car. When child is in the Race car and parent is using the remote control to drive the vehicle, the remote control will overtake control of the Police Car.
5. To pair your 2.4G remote control with your 6-Volt Battery-Powered Police Car, please point your 2.4G remote to your 6-Volt Battery-Powered Police Car, and then slide to "ON" on the remote control. A red light will flash and sync with your vehicle. Once the red light is no longer flashing and is on permanently, you can press the directional arrows to drive your 6-Volt Battery-Powered Police Car.
6. To make emergency stops, press the STOP button on your 2.4G remote control and that will immediately cut off the power supply for the motor engine of your 6-Volt Battery-Powered Police Car. To regain power, press the to turn ON power supply and press directional arrows to operate the vehicle again.

HOW TO USE YOUR 6-VOLT BATTERY-POWERED POLICE CAR

POWER BUTTON



1. Press "ON" on power ON / OFF button located on the dashboard.



2. Press different buttons on the dashboard or steering wheel to hear sounds and music.



4. To stop, release the foot pedal accelerator.



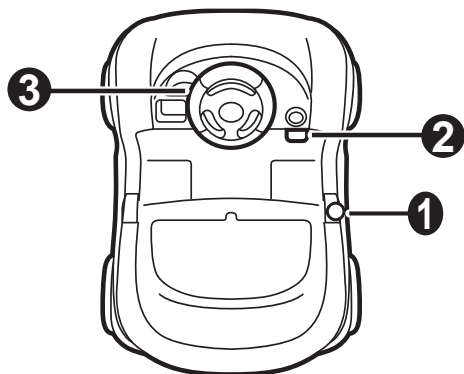
5. If the Police Car is not being played, press "OFF" on the "ON/OFF" button to turn off the motor. When "OFF" is pressed, the vehicle will not move forward even when the foot pedal accelerator is pressed.


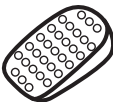

⚠ WARNING:

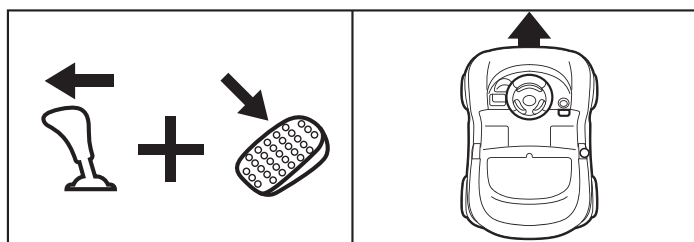
Always stay seated and keep both hands on the steering wheel while riding. Adult supervision at all times to be safe.

GETTING TO KNOW YOUR 6-VOLT BATTERY-POWERED POLICE CAR

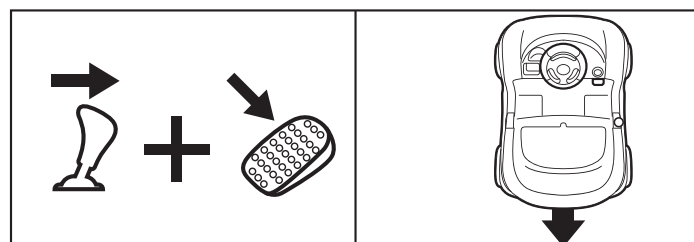
For optimum safety, your 6-Volt Battery-Powered Police Car is equipped with a Safety Mode which enables the vehicle to disconnect from the power switch once it runs into barriers continuously for a few seconds. If your 6-Volt Battery-Powered Police Car is in this situation, please wait for about 10 seconds for the vehicle to reboot itself and regain power for full play functions again. Lights around the vehicle will flash to indicate the vehicle is off its Safety Mode and is ready for play again.



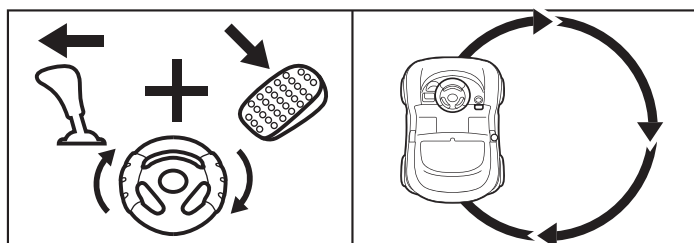
- | | | |
|----------|---|---|
| 1 |  | Slide gearshift forward to put Police Car in forward position; slide it back to put Police Car in reverse position. |
| 2 |  | Step on foot pedal accelerator to drive forward or back as you slide gearshift to your desired direction. |
| 3 |  | Turn steering wheel to go left or right. |



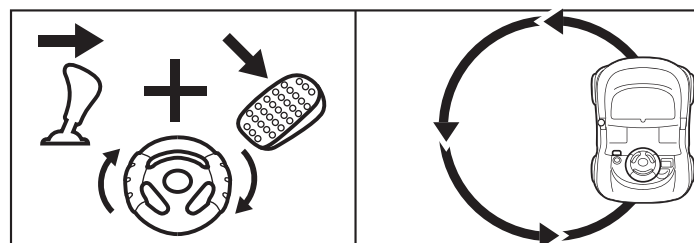
To go forward.



To go backward.



Go forward and turn right, continue to step on foot pedal accelerator to make a full 360° turn in clockwise direction.



Go backward and turn right, continue to step on foot pedal accelerator to make a full 360° turn in anti-clockwise direction.

INSTRUCTIONS FOR HANDLING RECHARGEABLE BATTERY:

- Never mix different types of batteries or mix new and used batteries.
- Charging batteries should be handled by ADULTS ONLY.
- Exhausted batteries are to be removed from the toy by ADULTS ONLY.
- The supply terminals are not to be short-circuited. Never lift or carry the battery by the wires or connector. This can damage the battery and possibly cause a fire resulting in serious injury. Lift and carry the battery by the case only.
- Battery charge for toy: The battery charger used with the toy is to be regularly examined for damage to the cord, plug, enclosure and other parts, and in the event of such damage, they must not be used until the damage has been repaired.
- Non-rechargeable batteries are not to be charged.
- HOT motors. Handle carefully.

INSTRUCTIONS FOR USING THE CHARGER:

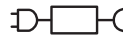
The charger should be examined regularly for damage to the cord, plug, enclosure and other parts. In the event of such damage, the 6-Volt Battery-Powered Police Car toy should not be charged until the charger has been repaired by qualified personnel or replaced. Use only with charger provided with the toys.

- Always use caution when charging.
- The charger is not a toy and should be operated by an adult.
- Always use the charger supplied to charge batteries for the electric Police Car.
- Never operate the charger near flammable materials or liquids, and operate the charger in well-ventilated areas.
- Disconnect the charger and unplug it from the 6-Volt Battery-Powered Police Car toy when not in use.
- Do not exceed the recommended charging time.
- Always disconnect the charger from the 6-Volt Battery-Powered Police Car toy prior to wiping down or cleaning the electric Police Car toy with any liquid.

HOW TO REPLACE THE 6V BATTERY:



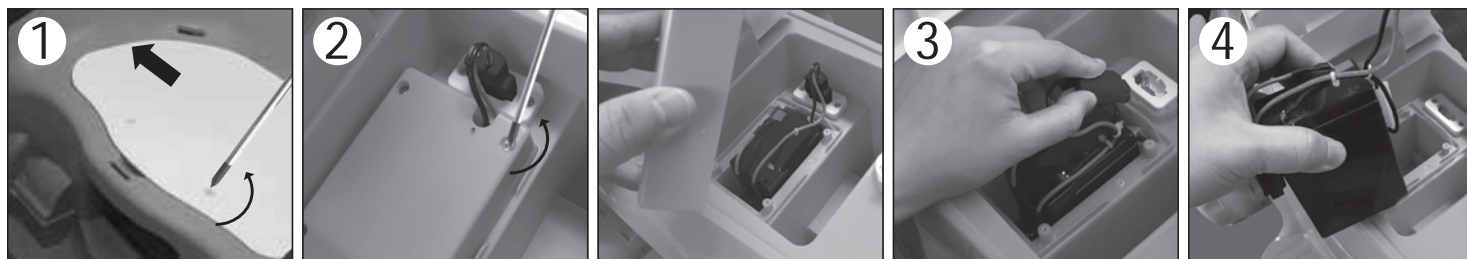
Read operator's manual



Separate supply unit

Note: Disconnect the power connector from the battery connector before conducting any maintenance procedures.

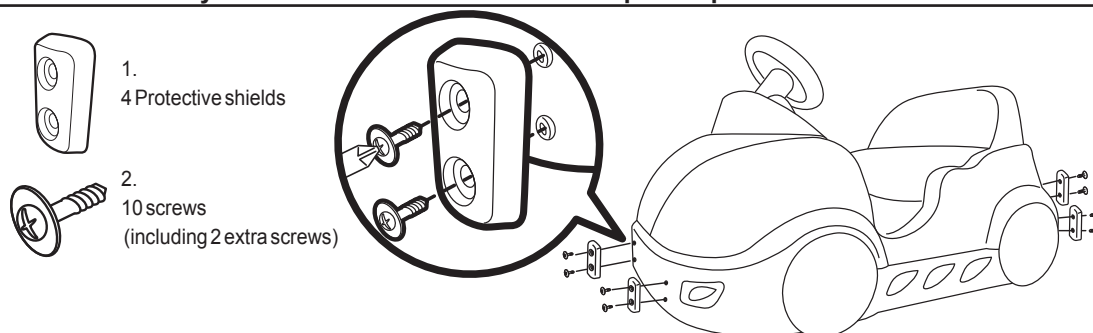
TOOLS REQUIRED: Philips Screwdriver (not included)



1. Unscrew the screw on the seat and open the seat cover.
2. Unscrew the four screws on the battery compartment with a screwdriver and remove the battery retainer.
3. Unplug the power connector which is connected to the battery.
4. Remove the battery.
5. Carefully lift the old battery and replace it with a new one.
6. Put the battery retainer back in place and secure it with screws. Plug the battery connector into the power connector, and align pins so they are inserted together to ensure full contact is made. Secure the seat cover back in place by securing the screw.

OPTIONAL PROTECTIVE SHIELDS INCLUDED

Your 6-Volt Battery Powered Police Car comes with 4 optional protective shields to be secured onto the front and back of the car.



Instructions:

1. Position 2 protective shields at the front, and 2 protective shields at the back as shown in diagram.
2. Align the screw and insert 1 screw through each hole of the protective shield to the police car, and secure with a Philips screwdriver. Repeat the same until all protective shields are secure in place.



SAFETY AND WARNINGS

This instruction sheet must be retained as it contains important information.

⚠ GENERAL WARNING: Riding a 6-Volt Battery-Powered Police Car toy can be a dangerous activity, even under the best of circumstances. Proper maintenance of your new Police Car toy is your responsibility and helps reduce the risk of injury. Certain conditions may cause components to fail without fault of the manufacturer. The Police Car toy can and is intended to move, and it is therefore possible to lose control, fall off and/or get into dangerous situations that no amount of care, instruction or expertise can eliminate. If such a thing does occur, your child can become seriously injured or die, even when using safety equipment and other safety precautions.

⚠ WARNING: To reduce risk of injury, adult supervision is required. Never use in roadways, near motor vehicles, on or near steep inclines or steps, swimming pools or other bodies of water; always wear shoes, and never allow more than one (1) rider.

THIS PRODUCT CONTAINS SEALED LEAD ACID BATTERIES WHICH MUST BE RECYCLED IN ACCORDANCE TO YOUR LOCAL AND STATE LAWS. PLEASE READ CAREFULLY AND UNDERSTAND THE FOLLOWING DISPOSAL INSTRUCTIONS:

DISPOSAL:

This product contains sealed lead acid batteries which must be disposed of or recycled in an environmentally safe manner. Do not dispose of the batteries in your household trash. Do not dispose of the batteries in a fire, as the battery may explode or leak. The incineration, disposal in landfill and/or placing sealed lead acid batteries with household trash is prohibited by law in most areas. Return exhausted batteries to a state or federal approved lead acid battery recycler or check with your local retailer of vehicle batteries.



WARNINGS:

- Do not store the battery in temperatures above 75°F (23.5°C) or below 32°F (0°C).
- If a battery leak develops, avoid contact with the leaking acid and place the battery in a plastic bag. See instructions above for proper disposal.
- If acid comes in contact with skin or eyes, flush with cool water for at least 15 minutes and call a physician immediately.
- If acid is internally ingested, give water, milk of magnesia or egg whites immediately. Never give emetics or induce vomiting. Call a physician immediately.



CAUTION: Use the charger in dry locations only.

CARE

- Leaving the battery in a discharged condition will ruin it.
- Always remove an exhausted battery from the ride-on. Battery leakage and corrosion can damage the ride-on.
- Do not store the battery on a surface which could be damaged by the acid contained inside the battery.
- Use only the battery provided. Remember to charge the new battery for at least 10 hours before first use.
- Examine the battery, charger and their connectors for excessive wear or damage each time you charge the battery. If damage is detected, do not use the charger or the battery until you have replaced the worn or damaged part.

ABOUT FUSES

Your 6-Volt Battery-Powered Police Car is equipped with an overcurrent protector and fuse. The protector is a self-resetting safety device which automatically “trips” and shuts down operation of the ride-on if the ride-on is overloaded or the driving conditions are too severe. Once a fuse has “tripped”, DO NOT CONTINUOUSLY PUSH ON THE POWER BUTTON. The fuse will automatically reset itself after approximately 1 minute and allow the vehicle to resume normal operations. To avoid repeated automatic shutdowns, do not overload the ride-on by exceeding the 50lb (22.7kg) maximum weight capacity or by towing anything behind the vehicle. Avoid severe driving conditions, such as driving up slopes or running into fixed objects, which can cause the wheels to stop spinning while power is still being supplied to the motor.

PREVENT FIRE

- Never modify the electrical system.
- Alterations could cause a fire resulting in serious injury and ruin the electrical system.
- Use of the wrong type of battery or charger could cause a fire or explosion.
- Use of non-original components on this vehicle could cause overheating, fire or explosion.
- The battery must be handled by adults only.
- The battery is heavy and contains sulfuric acid (electrolyte).
- Dropping the battery could result in serious injury.
- Battery charging must be done by ADULTS ONLY.
- Never lift or carry the battery by the wires or connector. This can damage the battery and possibly cause a fire. Lift the battery by the case only.
- Read the safety instructions on the battery.
- Examine the battery, charger and their connectors for excessive wear or damage each time you charge the battery.
- If damage or excessive wear is detected, do not use the charger or the battery until you have replaced the worn or damaged part.

RIDE AT YOUR OWN RISK AND ALWAYS USE COMMON SENSE

This manual contains many warnings and cautions concerning the consequences of failing to inspect, maintain or properly use your 6-Volt Battery-Powered Police Car toy. Because any fall can result in serious injury or even death, we do not repeat the warning of possible serious injury or death each time such a possibility is mentioned in this manual or the risk of falling leads to a warning.

ALWAYS USE PROPER RIDING ATTIRE

Safety seatbelt is included to help keep children secure inside the car. Always wear the seatbelts on your 6-Volt Battery-Powered Police Car before playing.

Always wear appropriate clothing and shoes, including long sleeved shirts and long pants and lace-up or similar shoes with rubber soles. Never ride barefoot or in sandals and make sure shoelaces or other fasteners are tied and kept away from the wheels and drive system of the Police Car toy.

RIDER USE AND REQUIRED PARENTAL SUPERVISION

WARNING! NOT TO BE USED BY CHILDREN OVER 36 MONTHS DUE TO INSUFFICIENT STRENGTH. RIDER MUST NOT EXCEED THE WEIGHT LIMIT OF 50 pounds (22.7kg) and MUST BE OVER 18 MONTHS OLD.

The age grade for the electric Police Car toy is for ages 18-36 months. Even if your child is within the age and weight limitations specified for the 6-Volt Battery-Powered Police Car toy, it does not imply his/her size is appropriate to fit or maintain control of vehicle, or that he/she is capable of safely operating the vehicle. Please determine whether your child is at the appropriate developmental stage for safe use of the 6-Volt Battery-Powered Police Car toy. Any rider that is unable to fit comfortably on the 6-Volt Battery-Powered Police Car toy should never attempt to ride it. A parent's decision to allow their child to use the vehicle should be based on the child's maturity, skill and their ability to follow rules. Remember that the 6-Volt Battery-Powered Police Car toy is intended for use only by children who are, at a minimum, able to comfortably and safely operate it. Children operating the 6-Volt Battery-Powered Police Car toy should be supervised by an adult at all times. Parents should ensure that children only use the 6-Volt Battery-Powered Police Car toy safely and within their age and physical limits.

THIS MANUAL CONTAINS VERY IMPORTANT SAFETY INFORMATION:

- Please completely review all information in this Instruction Manual to ensure all riders understand all of the warnings, cautions, instructions and safety topics mentioned.
- You must periodically review and reinforce all information on this manual with all riders.
- You must regularly inspect and maintain your 6-Volt Battery-Powered Police Car toy to ensure safety of all riders.
- Check to ensure your 6-Volt Battery-Powered Police Car toy is properly fitted to the rider and it is in good repair and safe operating condition.
- Children should be made aware of all possible riding hazards and correct riding behavior and attire before they ride the 6-Volt Battery-Powered Police Car toy.

PRE-RIDE SAFETY CHECKLIST

- ☒ Check to make sure that all components are properly secured and are functioning according to the manufacturer's specifications. Components must be maintained are repaired and only with the manufacturer's authorized replacement parts.
- ☒ Installation should be performed only by adult, qualified personnel.

IMPORTANT

- Do not let any child touch the wheels or be near them when Police Car is moving.
- To avoid accidents, please inspect the Police Car before riding to ensure that it is in proper working order and safe to ride.
- To drive your Battery-Powered Police Car, press power “on/off” button, and then step on the footrest power button. Ride-on will then go forward.
- This Police Car has no brake; to stop, take your feet off the footrest power button. Police Car will then stop.
- If Police Car is not being played, press to “off” on the power on/off button to turn off the motor. When “OFF” is pressed, the vehicle will not move forward even when the footrest power button is pressed.
- Check all the screws, cap nuts and protective coverings regularly and tighten as required. Check plastic parts on a regular basis for cracks or broken pieces.
- Your new battery must be charged for at least 10 hours before you use it in your 6-Volt Battery-Powered Police Car for the first time.
- Do not wash the vehicle with water; clean it with a cloth.
- Always disconnect the vehicle from any power supply before cleaning.

WARNING:

Never modify or alter the electrical system. Alterations could cause a fire or explosion resulting in serious injury or death and could also ruin the electrical system.

SAFETY PRECAUTIONS

- Children must have adult supervision at all times.
- Do not ride on the road, driveways, near pools or water.
- Do not allow children under or over the recommended age to ride the vehicle; please refer to the age grading guide.
- To stop the vehicle, you must take your foot off the power button on the foot rest.
- Charging should only be done by an adult.
- An adult must teach the child how to operate the 6-Volt Battery-Powered Police Car.
- Do not ride on hills or slopes, in sand or on other soft, wet, or slippery surfaces.
- Do not use a different size battery. Use only the original or recommended replacement battery.
- The 6-Volt Battery-Powered Police Car is designed to carry only one rider at a time. Never over-load the ride-on.
- This product should be checked by adults before use.

SAFE RIDING PRACTICES AND WARNINGS

- Check and obey all local laws or regulations which may be in effect in the locations where the 6-Volt Battery-Powered Police Car toy may be used.
- Never ride the vehicle in traffic.
- Always wear appropriate clothing and shoes.
- Observe the age and weight limitations featured on the cover of this manual.
- Always stay seated while riding the 6-Volt Battery-Powered Police Car toy. To stop you must take your feet off the power-button on the foot rests.
- If Police Car is not being played, press to "OFF" on the "ON/OFF" button to turn off the motor. When "Off" is pressed, the vehicle will not move forward even when power button on the foot rest is pressed.
- Children must be supervised by an adult at all times to be safe.
- Always be alert and ride your 6-Volt Battery-Powered Police Car toy defensively. Watch out for obstacles that could hit one of the vehicle's wheels or force you to turn suddenly and/or lose control. Be careful to avoid pedestrians, persons using other wheeled products (including roller or in-line skates, skateboard, scooters, bikes, etc.), children or animals who enter your path. Always respect the right and property of others.
- Do not activate the power button unless you are seated on the vehicle and in a safe, outdoor environment that is suitable for riding your 6-Volt Battery-Powered Police Car toy.
- Do not attempt or perform any stunts or tricks on the vehicle. It is not made to withstand such misuse and abuse.
- Keep both hands on the steering wheel at all times.
- Do not touch the motor on the 6-Volt Battery-Powered Police Car toy when in use or directly after use as these parts can become extremely hot.
- Never allow more than one person to ride the 6-Volt Battery-Powered Police Car toy at one time and never try to tow anything.
- Do not use near steps, water, or swimming pools.
- Do not ride in wet weather.
- Never immerse the 6-Volt Battery-Powered Police Car toy in water; electrical and drive components could be damaged by water or create other potentially unsafe conditions.
- Keep your fingers and other body parts away from the motor, steering system, wheel and all other moving components.
- Never hitch onto another vehicle or let yourself be pulled or pull anyone or anything while riding the 6-Volt Battery-Powered Police Car toy.
- Ride only on smooth, flat, dry surfaces such as pavement or level ground without loose debris, such as sand, leaves, rocks or gravel. Water, mud, ice, bumpy, un-even, slick, or rough surfaces could impair traction and contribute to possible loss of control.
- Do not ride on or near hills or steep inclines. Ride only on level ground to avoid tip-overs.
- Avoid sharp turns, bumps, drainage grates and other obstacles.
- Do not ride at night or where there is limited visibility.
- Do not ride indoors or on surfaces that could become damaged such as carpets or flooring.
- Do not ride on streets, around cars, or in foot or vehicle traffic.
- Regularly check the 6-Volt Battery-Powered Police Car toy and its components. If any parts are broken or worn, do not ride the vehicle until you have fixed or replaced the broken or worn parts.
- Store your 6-Volt Battery-Powered Police Car toy indoors at all times. Avoid direct sunlight and humid interiors.
- Do not allow hands, feet, hair, body parts, clothing, or similar articles to come in contact with wheels or other moving parts.
- Before each cycle of operation, you must perform the pre-operation checks specified in this manual or by the manufacturer, including:
 - The area that the 6-Volt Battery-Powered Police Car toy is to be operated in is safe and suitable for safe operation;
 - All safety labels are in place and understood by everyone, including the riders;
 - The rechargeable batteries are charged and in serviceable condition;
 - That tires/wheels are in good condition.
- Avoid sharp dumps, drainage grates, and sudden surface changes.
- Warning! Pay special attention to the potential hazards of using the ride-on electric toy in areas other than private grounds.
- The toy should be used with caution since skill is required to avoid falls and collisions causing injury to the children or third parties.
- Avoid riding backwards as it is important to look ahead and ride on level ground without loose debris.
- Do not ride on carpets.



WARNING:

To reduce the risk of injury, adult supervision is required. Never use in roadways, near motor vehicles, on or near steep inclines or steps, swimming pools or other bodies of water; always wear shoes and never allow more than 1 rider. **RISK OF FIRE. Do not bypass. Replace only with AB19U025.**

WARRANTY

LIMITED WARRANTY

Subject to the following limitations, the 6-volt battery and charger in the 6-Volt Battery-Powered Police Car manufactured by Kiddieland have a limited warranty period of six months from the date of purchase.

No other express or implied warranty is given. Kiddieland will replace without charge the 6V battery or charger which are determined by Kiddieland to be defective under normal use and service within the warranty period. The original purchaser will be responsible for any and all labor charges connected with the repair or replacement of component parts.

This Limited Warranty does not apply to normal wear and tear with use, nor malfunctions, or failures that result from abuse, neglect, improper assembly, improper maintenance, lack of maintenance, improper storage, alteration, modification, collision, crash, or misuse of the Kiddieland 6-volt battery and charger.

Do not perform trick riding, ramp riding, stunting, jumping, aggressive riding, riding on severe terrain, riding in severe climates, riding with heavy loads, commercial activities, or other similar activities; such use is inherently dangerous, can cause serious injury to the rider, and if done, it is with the rider and/or the rider's parent's express and implied assumption of the risk of such use, and Kiddieland shall not have any responsibility for any resulting break down of the ride-on toy or its components, or for any rider injuries that occur during such use.

THE PURCHASE OF THIS 6-VOLT Battery-Powered Police Car WILL CONFIRM THE BUYER'S AGREEMENT THAT KIDDEILAND'S LIABILITY UNDER THIS WARRANTY SHALL BE NO GREATER THAN THE AMOUNT OF THE ORIGINAL PURCHASE PRICE AND IN NO EVENT SHALL KIDDEILAND BE LIABLE FOR INCIDENTAL OR CONSEQUENTIAL DAMAGES.

This limited Warranty will be void if the product is ever:

- used in a manner other than for recreation
- modified in any way
- used as a rental

Kiddieland does not offer an extended warranty. If you have purchased an extended warranty, it must be honored by the store from which you purchased the ride-on toy or the appropriate party. For your records, keep your original sales receipt with this manual.

FCC Statement (United States Only)

- **This device complies with Part 15 of the FCC Rules. Operation is subject to the following two conditions: (1) This device may not cause harmful interference, and (2) this device must accept any interference received, including interference that may cause undesired operation.**
- **NOTE:** This equipment has been tested and found to comply with the limits for a Class B digital device, pursuant to Part 15 of the FCC Rules. These limits are designed to provide reasonable protection against harmful interference in a residential installation. This equipment generates, uses and can radiate radio frequency energy and, if not installed and used in accordance with the instructions, may cause harmful interference to radio communications. However, there is no guarantee that interference will not occur in a particular installation. If this equipment does cause harmful interference to radio or television reception, which can be determined by turning the equipment off and on, the user is encouraged to try to correct the interference by one or more of the following measures:
 - Reorient or relocate the receiving antenna.
 - Increase the separation between the equipment and receiver.
 - Connect the equipment into an outlet on a circuit different from that to which the receiver is connected.
 - Consult the dealer or experienced radio/TV technician for help.
- **CAUTION:** Changes or modifications to this unit not expressly approved by the party responsible for compliance could void the user's authority to operate the equipment.