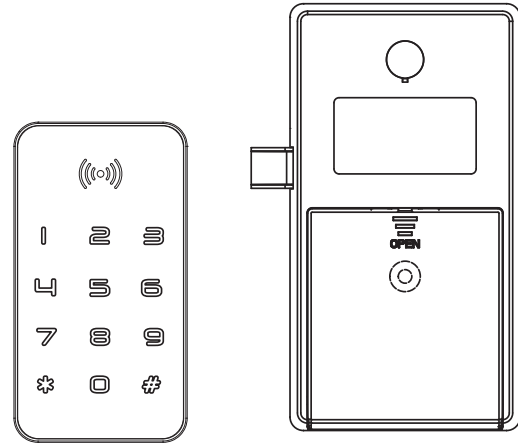


CABINET LOCK

USER MANUAL



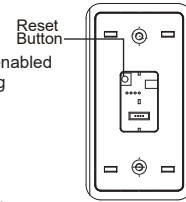
Before using

1. Set master card and manager card (follow step in red title)
2. Change the working mode -- individual mode or public mode

Step 1:How to enable master card

- Press the reset button, "beep, beep, beep" then release
- Light flashes then off, system initialized
- Put a new card on card sensor, a long "beep", master card enabled
- Note: The master card cannot be used for unlocking / locking

Reset button → Release → New Card



How to disable master card

- Press the reset button, "beep, beep, beep" then release
- light flashes then off, system initialized, master card disabled

Step 2:How to enable manager card (Max 3 manager cards)

- Read master card, light flashes
- Put a new card on card sensor,a long "beep", manager card enabled

Master card → New card 1 → New Card 2 → New Card 3

How to disable single manager card

- Read master card, light flashes
- Put a registered manager card on card sensor, "beep, beep", the manager card disabled

Master card → Manager Card 1

How to enable/change manager code (a manager code)

- Read master card, light flashes
- Enter manager code then #, "Beep", manager code enable

Master card → "1 2 3 4" (Sample) → #

How to disable cards and code

- Read master card, light flashes
- Put master card on card sensor again, "beep,beep,beep", all manager cards/code, service cards or user code disabled

Master card → Master Card

How to unlock (For management or emergency)

1. Manager Card

- Read manager card for twice,"beep",latch retracts, unlocked
- Pull door open

Manager card → Manager Card

2. Manager Code

- Enter manager password then #, "Beep", unlocked
- Pull door open

"1 2 3 4" (Sample) → #

How to enable service card (Max 5 service cards)

- Read manager card, light flashes
- Put a new card on card sensor, "beep", service card enabled

Manager Card → New Card 1 → New Card 2

How to disable single service card

- Read manager card, light flashes
- Put a registered service card on card sensor, "beep,beep", the service card disabled

Manager card → Service card

How to disable all service cards

- Read manager card, light flashes
- Put the manager card again, "beep,beep,beep", all the service cards disabled

Manager card → Manager card

How to unlock (when emergency)

- Read service card,"beep",latch retracts, unlocked
- Pull door open

Service card

Note: it can't unlock in case of card+password mode

Step 3:Individual Mode

How to set individual mode(If public mode, ignore the step)

1. Individual Automatic Mode

- Read manager card, press * for 3 seconds, red light flashes
- Enter 1 and #, green light on, "beep, beep", individual automatic mode enabled

Manager card → * → 1 → #

2. Individual Manual Mode

- Read manager card, press * for 3 seconds, red light flashes
- Enter 2 and #,green light on, "beep, beep", individual manual mode enabled

Manager card → * → 2 → #

How to enable user password

- Read manager card , light flashes
- Enter a new user password and #,green light, a long "Beep", user password enabled

Manager card → "1 5 9" (Sample) → #

How to change user password

- Press * for 3 seconds, light flashes
- Enter current password code and #, green light on, "Beep, beep" then light flashes
- Enter new password code and #, green light on a long "Beep", new user password enabled

* → "1 5 9" (Sample) → # → "1 2 3" (Sample) → #

How to lock

1. Individual Automatic Mode

- Push the door closed, door locks automatically

2. Individual Manual Mode

- Push the door closed
- Enter #, green light flashes twice, latch comes out,"Beep,beep" locked

How to unlock

1. User password
- Enter user password and #, green light, "Beep", unlocked
- Pull door open

"1 5 9" (Sample) → #

Step 4:Public Mode

How to set public mode

*** 4 different public modes for option, follow the step to set the mode for application**

1. Public Mode -- Regular password

1) How to set

- Read manager card, press * for 3 seconds, red light flashes
- Enter 3 and #, green light on, "beep, beep", public regular password mode enabled

Manager card → * → 3 → #

2) How to lock

- Push door closed
- Enter any password and #, green light flashes twice, "beep, beep", latch comes out, locked

"0 0 0" (Sample) → #

3) How to unlock

- Enter the same password and #, green light flashes once, "beep", latch retracts, unlocked
- Pull door open

"0 0 0" (Sample) → #

Note: Password can be any 1-10 digit number combination

2. Public Mode -- 4-digit password

1) How to set

→Read manager card, press * for 3 seconds, red light flashes
→Enter 4 and #, green light on, "beep, beep", public 4-digit password mode enabled



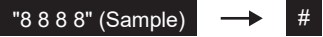
2) How to lock

→Push door closed
→Enter any password and #, green light flashes twice, "beep, beep", latch comes out, locked



3) How to unlock

→Enter the same password and #, green light flashes once, "beep", latch retracts, unlocked
→Pull door open



3. Public Mode -- Regular password+Card

1) How to set

→Read manager card, press * for 3 seconds, red light flashes
→Enter 5 and #, green light on, "beep, beep", public regular password+Card mode enabled



2) How to lock

→Push door closed
→Read service card, "beep",light flashes
→Enter any password and #, green light flashes twice, "beep, beep", latch comes out, locked



3) How to unlock

→Read service card, "beep",light flashes
→Enter the same password and #, green light flashes, "beep", latch retracts, unlocked
→Pull door open



4. Public Mode -- 4-digit password+Card

1) How to set

→Read manager card, press * for 3 seconds, red light flashes
→Enter 6 and #, green light on, "beep, beep", public 4-digit password+Card mode enabled



2) How to lock

→Push door closed
→Read service card, "beep",light flashes
→Enter any password and #, green light flashes twice, "beep, beep", latch comes out, locked



3) How to unlock

→Read service card, "beep",light flashes
→Enter the same password and #, green light flashes, "beep", latch retracts, unlocked
→Pull door open



Burglar Warning

- 1.Read invalid card or enter incorrect password for 4 times, it will be beeping for 20 seconds.
- 2. To read valid card or enter correct password, it will stop beeping

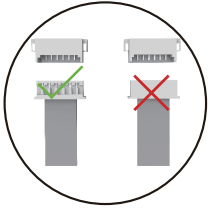
Low Battery Warning

- 1.If "Beep Beep ..." 8 sounds with red light after door opened, it indicates low battery then change new battery in time (Note: Use 4XAA alkaline battery, not take carbone battery)
- 2. If the lock can't work when low battery, can connect power bank or mobile plug for outer power Supply.After unlocked, change the battery immediately

Note

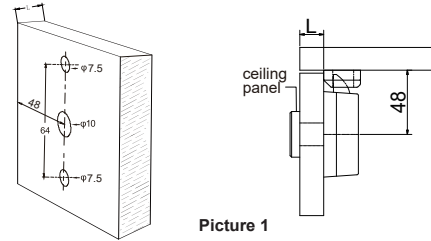
The indicator will flashes every 3 seconds if occupied when public mode

wire connection



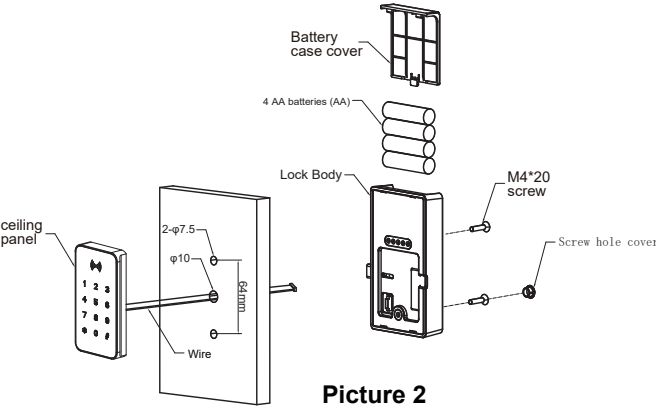
Installation Instructions

- 1. Put the installation drawing on the door, approx. 48mm between the door frame and center hole (Picture 1), then drill the hole

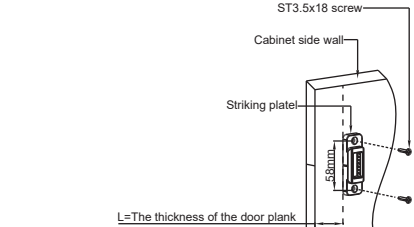


	Door Thickness (mm)	Screw
	14mm~16mm	M4X16
	18mm~20mm	M4X20

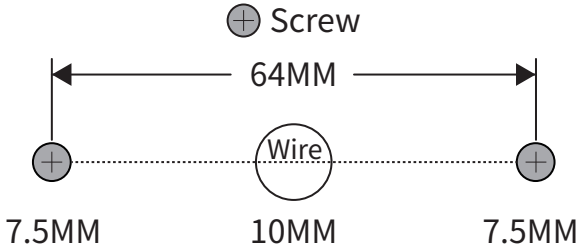
- 2. Wire goes through the center hole and fix the front panel by screw M4X20 , then connect the back lock, (Tide up the wire not crush), fix back lock by screw ST3.5X18



- 3. Fix the striking plate by screw ST3.5X18(Make sure latch works well)

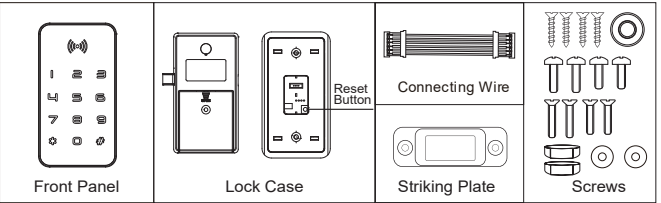


INSTALLATION DRAWING



Follow the drawing to drill the hole

COMPONENT



Caution: The user is cautioned that changes or modifications not expressly approved by the party responsible for compliance could void the user's authority to operate the equipment.

This device complies with Part 15 of the FCC Rules. Operation is subject to the following two conditions: (1) this device may not cause harmful interference, and (2) this device must accept any interference received, including interference that may cause undesired operation.

NOTE: This equipment has been tested and found to comply with the limits for a Class B digital device, pursuant to Part 15 of the FCC Rules. These limits are designed to provide reasonable protection against harmful interference in a residential installation. This equipment generates, uses and can radiate radio frequency energy and, if not installed and used in accordance with the instructions, may cause harmful interference to radio communications. However, there is no guarantee that interference will not occur in a particular installation.

If this equipment does cause harmful interference to radio or television reception, which can be determined by turning the equipment off and on, the user is encouraged to try to correct the interference by one or more of the following measures:

- Reorient or relocate the receiving antenna.
- Increase the separation between the equipment and receiver.
- Connect the equipment into an outlet on a circuit different from that to which the receiver is connected.
- Consult the dealer or an experienced radio/TV technician for help.

FCC Radiation Exposure Statement

This equipment complies with FCC radiation exposure limits set forth for an uncontrolled environment.

This transmitter must not be co-located or operating in conjunction with any other antenna or transmitter.