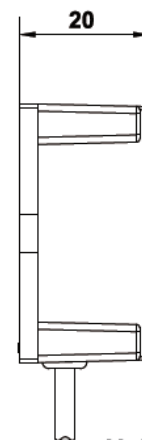
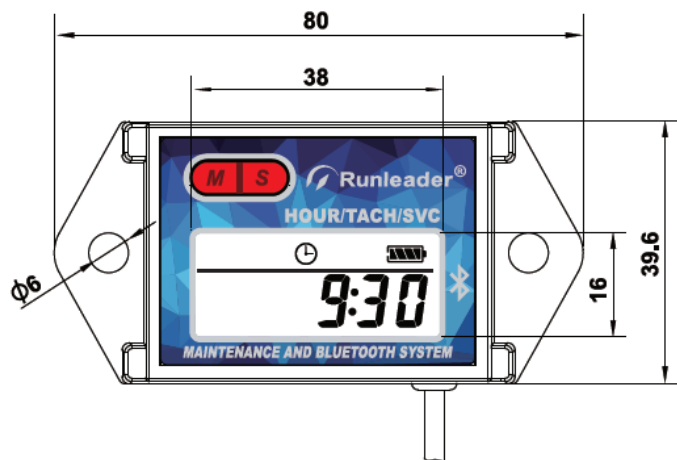




# Battery indicator & Hour meter RL-HM027BT



## 【Product Dimension】



Unit: mm



## 【Product Specification】

ITEM NAME	PARAMETERS	ITEM NAME	PARAMETERS
Product model	RL-HM027BT	Alert RPM setting range	OFF/100-25000 RPM
RPM range	0-25000 RPM	Firing patterns	1P1R 1P2R 2P1R 3P1R 3P2R 4P1R 5P2R 6P1R 8P1R 12P1R
RPM accuracy	10 RPM	External dimensions	80×39.6×20mm
RPM refresh	0.5s /1.0/2.0s	Display window size(viewable)	38×16mm
TOT/JOB Hours range	0-99999 H	Battery type	CR2032 210mAh
Timing accuracy	0-999H59M: 1Min 1000-9999.9H: 0.1H 10000-99999H: 1H	Display type	LCD
TOT initial time range	0-99999 H It is only can be reset 1 hour before engine working	Housing material	ABS
Working times range	0-99999 times	Weight	68g
Clock system	24H	Waterproof rate	IP67
SVC hours range	OFF, 5-1000H	Working voltage	DC8-30V

FCC warning:

Any Changes or modifications not expressly approved by the party responsible for compliance could void the user's authority to operate the equipment.

**Note:** This equipment has been tested and found to comply with the limits for a Class B digital device, pursuant to part 15 of the FCC Rules. These limits are designed to provide reasonable protection against harmful interference in a residential installation. This equipment generates uses and can radiate radio frequency energy and, if not installed and used in accordance with the instructions, may cause harmful interference to radio communications. However, there is no guarantee that interference will not occur in a particular installation. If this equipment does cause harmful interference to radio or television reception, which can be determined by turning the equipment off and on, the user is encouraged to try to correct the interference by one or more of the following measures:

- Reorient or relocate the receiving antenna.
- Increase the separation between the equipment and receiver.
- Connect the equipment into an outlet on a circuit different from that to which the receiver is connected.
- Consult the dealer or an experienced radio/TV technician for help.

This device complies with part 15 of the FCC Rules. Operation is subject to the following two conditions:

- (1) This device may not cause harmful interference, and
- (2) this device must accept any interference received, including interference that may cause undesired operation.

RF exposure information :

The device has been evaluated to meet general RF exposure requirements.

Please read and understand the following notices carefully, and correctly install and operate the product before using.

### 【 Notice 】

1. Please refer to the installation and function instructions in the APP operation manual to avoid damage caused by installation errors.
2. This product contains internal battery and replaceable; pls ensure the reliability of battery installation.
3. Do not pull the wire when using to avoid falling off or poor contact.
4. Please install the product in an appropriate location to avoid this product being hit and prevent damage to the product.
5. This product is waterproof to some extent, but can not be used in deep water or long-term immersion in rain water.
6. Please use this product at the specified temperature, the high temperature environment may cause damage to the product.

### 【APP Installation】

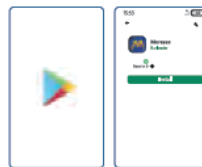
Four ways to download:

#### 1. IOS APP Download:



Search "Moresee" in "App Store" to download and install

#### 2. Android Download:



Search "Moresee" in "Google Play Store" to download and install.

#### 3. QR Code Download:



Scan the official QR code of "Moresee" with the mobile phone to download and install.

#### 4. Official Download :

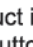


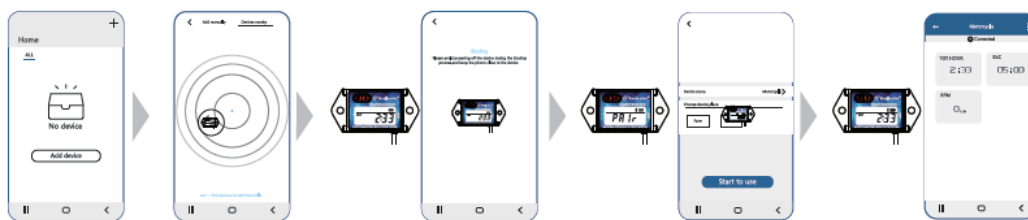
<http://www.runleader.com>

Find the "Moresee" QR code on the official website "DOWNLOAD" to scan, download and install.

### 【Product Connection】

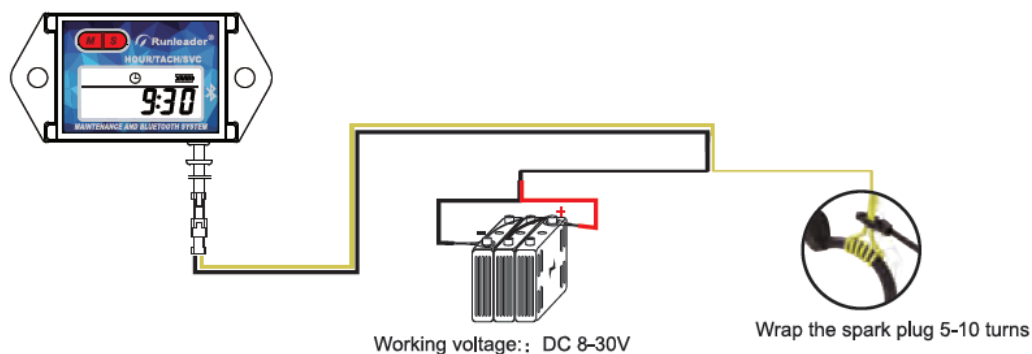
Bluetooth binding method:

1. Turn on the Bluetooth function of the mobile phone, click on the APP to add a device, search for nearby devices, and click on the product picture after finding it.
2. When the product is turned on, the LCD will display the "  " icon and the "Pair" interface, press the "S" or "M" button to confirm, then the LCD has a Bluetooth icon, and the APP will display "Start Using", click "Start Using" and wait for the Bluetooth connection to succeed.



## 【Product Installation Instructions】

1. The wiring installation method is as follows:



- Notice:
- a. Check if the product is installed correctly, the RPM interface displays RPM. When the engine starts, the RPM interface displays the current RPM, which means the product is installed correctly.
  - b. Insufficient fixation of the yellow sensing wire will affect the accuracy of the test data.
  - c. Product can be used directly, or connected to an external power supply to work. It is recommended to connect an external power supply to improve the internal battery life.

## 【Product Function Settings】

Open the APP "Moresee", click the "⋮" icon after the product is successfully connected, find the "Using Help" and click "Using Help" to see the product function manual, and user can refer to the manual to set the function.

