

Bluetooth beacon AW-DS-S1

User's Manual



Please read the product carefully and keep it properly before using it.

Bluetooth beacon AW-DS-S1

Product introduction

Bluetooth beacon AW-DS-S1 is a terminal device that periodically broadcasts Bluetooth beacons to the surrounding environment. It can be widely used in Internet of things applications such as indoor positioning, indoor navigation, exhibition navigation, patrol and clock in.

Packaging list of Bluetooth beacon			
Serial NO.	Name	NO.	Remarks
1	Bluetooth beacon	1	
2	No.5 Battery	2	
3	3M Glue	1	
4	User's Manual	1	
5	Certificate	1	

Product features

- Bluetooth for precise positioning
- Dustproof and waterproof
- Configurable parameters
- Low power consumption, long standby time, replaceable battery

Bluetooth beacon AW-DS-S1

Product parameters

Communication Frequency : 2402-2480MHz

Communication Protocol : Bluetooth 4.0

Communication Distance : 13m

Standby Current : <0.3uA

Battery Life : 5 years (Actual life related to solution)

Battery Specification : No.5 Battery

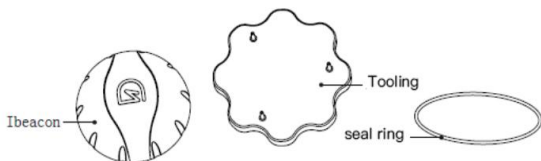
Dimensions (L,W,H) : ϕ 80mm*30mm

UUID: FDA50693-A4E2-4FB1-AFCF-C6EB07647825(Fixed)

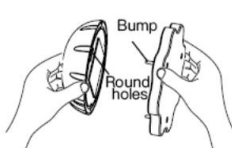
Bluetooth beacon AW-DS-S1

Instruction for use

Installation instructions



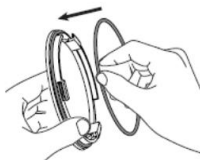
① Prepare ibeacon, tooling and sealing ring (optional)



② Put the three bumps on the tooling into the three round holes of ibeacon battery cover



③ Turn the tooling counterclockwise to open the battery cover

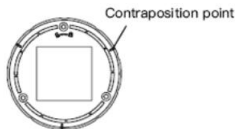


④ (optional) take out the battery cover and put the sealing ring on the battery cover



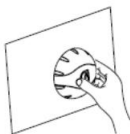
⑤ Put in two new No. 5 batteries and replace the battery cover

Bluetooth beacon AW-DS-S1



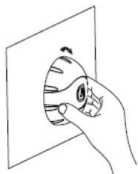
⑥ Install the battery cover back with the tooling and turn it clockwise to the alignment point on the battery cover

⑦ Remove the sticker on the adhesive surface of the battery cover

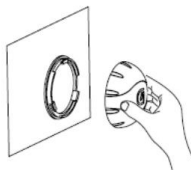


⑧ Paste ibeacon on the wall or ceiling. Please wipe the wall before pasting

Replace the battery



① Turn the housing of ibeacon clockwise



② Remove the housing



③ Replace the battery



④ Replace the housing and turn it counterclockwise until the clamping point is aligned

Bluetooth beacon AW-DS-S1

Common troubleshooting

Serial NO.	Common troubleshooting	Exclusion method	Remarks
1	No signal	Take out the battery, check the front and back, and install it in the correct direction.	
		Check whether the switch is on.	

Bluetooth beacon AW-DS-S1

Warranty Card

Product Name		Model	
User Name		Tel Number	
Postal Address			
Purchase Date		Purchase Route	
Product SN			

Warranty terms:

1、When purchasing this product, please fill in this card carefully and carefully read the warranty terms to ensure that the product is under effective warranty.

1) With the warranty card and purchase document (the copy is invalid), the user can enjoy the warranty service of the whole machine for one year from the date of purchase. During the warranty period, spare parts damage or machine failure caused by product quality problems can be repaired and replaced free of charge;

2) The information filled in this warranty card is true, otherwise it is invalid.

2、In case of any of the following circumstances during the warranty period, the warranty service cannot be enjoyed.

1) Damage or failure caused by improper installation, use and storage;

2) Damage or failure caused by force majeure (such as flood, fire, earthquake, etc.);

3) Damage or failure caused by disassembly and maintenance not approved by the company;

4) There is no warranty card and purchase document, and the purchase document is inconsistent with the product or altered.

3、After the warranty period expires, the user can still get the maintenance service of the company, and the corresponding maintenance, transportation and other expenses shall be paid at that time.

Bluetooth beacon AW-DS-S1

Production Address : 11F, Building A, Yihui Center, No. 399, Qianmo Road,
Binjiang District, Hangzhou City, Zhejiang Province, China
Hangzhou AwareTec Technology Co., Ltd.

Tel : 400-086-3880

Email : 310052

This device complies with part 15 of the FCC Rules. Operation is subject to the following two conditions: (1) this device may not cause harmful interference, and (2) this device must accept any interference received, including interference that may cause undesired operation.

Any changes or modifications not expressly approved by the party responsible for compliance could void the user's authority to operate the equipment.

NOTE: This equipment has been tested and found to comply with the limits for a Class B digital device, pursuant to Part 15 of the FCC Rules. These limits are designed to provide reasonable protection against harmful interference in a residential installation. This equipment generates, uses and can radiate radio frequency energy and, if not installed and used in accordance with the instructions, may cause harmful interference to radio communications. However, there is no guarantee that interference will not occur in a particular installation.

If this equipment does cause harmful interference to radio or television reception, which can be determined by turning the equipment off and on, the user is encouraged to try to correct the interference by one or more of the following measures:

- Reorient or relocate the receiving antenna.
- Increase the separation between the equipment and receiver.
- Connect the equipment into an outlet on a circuit different from that to which the receiver is connected.
- Consult the dealer or an experienced radio/TV technician for help.

The device has been evaluated to meet general RF exposure requirement. The device can be used in portable exposure condition without restriction