



User's Manual

Model: SS046

Portable electric vehicle charging station level 2

Please read the instructions carefully before using.

Specs: 240V/24-40A adjustable current mode/9.6kw/LCD

Contents

Product Safety Information	1
Product Descriptions	3
Product Features	4
Use Precautions	5
How to Start Charging	11
How to Stop Charging	12
Current Mode Setting	13
Timing Charging Setting	14
Introduction Of Screen Display	11
Quality Assurance	14
Warranty Card / Product Certificate	15

Product Safety Information

Thank you for purchasing and using RYANSANS Portable electric vehicle charging station level 2. In order to help you properly use this product, please read this user's manual carefully before charging.

⚠ CAUTION

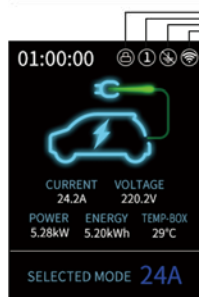
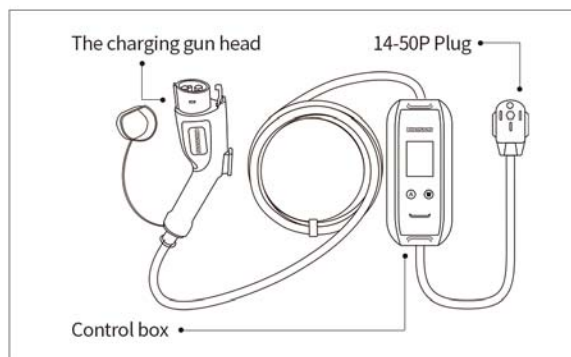
- Do not use the device to charge in rainy days;
- Do not submerge the control box in water;
- Do not step on, pull, fold or knot the cable;
- Do not drop the control box or place heavy object on it;
- Do not place the charging cable near high temperature object when charging;
- Do not place the device in the car or in a sealed space when charging;
- Do not operate the device in temperatures beyond its operating range of -25°C to +50°C;
- 40A Power- supply side input cable should be at least 3*4mm² (recommended 3*6mm²) It is suggested that the power distribution is operated by the professionals.

Product Safety Information

⚠ WARNING

- Only for using in the situation that the power-supply side contains RCD breaker protector.
- Do not use the device when cable is broken .
- Only for EV charging.
- Do not use the device with an additional cable.
- Do not put fingers into the charge connector.
- The device contains no maintainable parts. Do not attempt to repair or maintain it by yourself.
- Please contact the dealer for repair or replacement when the device can not work.

Product Description



SCREEN

- 00:00:00 : Charging time
- Lock : Anti theft function
- Number : Timing (hour)
- Earthed : Grounding status
- WiFi : WiFi connection
- Car Icon : State of Charge
- Display data : Real-Time Data



INDICATOR

- Blue (Always on) : Not Connected
- Green (Always on) : Connected
- Green (Breathing) : Charging
- Red (Always on) : Failure

Technical Specification

Technical Features	Input Power	90-250VAC, 50/60Hz,1-phase
	Output Current	24A/32A/40A
	Standby Power	<3W
	Standard	IEC 61851-1,IEC 61851-22
	Charge Interface	Type 2 Plug
	User Interface	LED, LCD,Touch Button
Physical Features	Dimensions	42cm(L)*14cm(W)*14cm(H)
	Weight	2.15kg
	Protection	SSS
	Operating Temperature	-25°C to +50°C
	Humidity	<95%RH
	Operating Altitude	<2000m
Safety Design	Cooling Method	Natural Cooling
	Overvoltage Protection, Overcurrent Protection, Leakage Protection, Overtemperature Protection, CP Protection, Lightning protection, Ungrounded protection.	

Use Precautions

- 1.If the charging gun is damaged due to the failure to use the cable with the specified wire diameter, the Three Guarantees service will not be enjoyed.
2. Do not put inflammables, explosives or combustible materials, chemicals, combustible steam and other dangerous goods near the charging gun.
3. Please keep the charging connector clean and dry. If it is dirty, please first disconnect the power-plug from the power socket to make sure no power, then please wipe it with a clean dry cloth.Do not touch the metal pin in the connector by hands .
4. Do not use the charging cable when it is defective, cracked, worn, cracked or exposed. If you find the above situation, please contact the customer service in time.
5. Do not attempt to disassemble, repair or refit the charging device. If you need to repair or refit, please contact the customer service. Incorrect operation may lead to equipment damage, water leakage, electric leakage, etc.
6. In case of any abnormality during use, all input power should be cut off immediately.

5

Use Precautions

7. It is strictly forbidden for any person to pull out the head of the charging gun without authorization during the charging process, so as to avoid the safety threat to the vehicle or personnel during the charging process.
8. Vehicles are not allowed to drive during charging. Charging can only be carried out when the vehicle is stationary. For hybrid vehicles, please turn off the engine before charging.

6

How to Start Charging

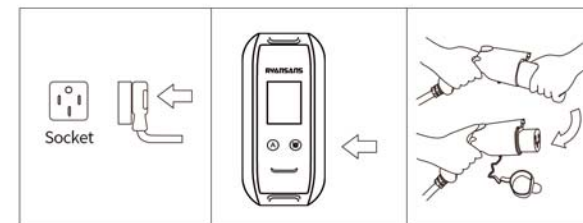


Fig1

Fig2

Fig3

1. Insert the plug into power-supply socket firmly(Fig1).
⚠ Ensure cable is compliance with national standard.
2. Press the button [A] to switch charging current mode.
Press the button [CLOCK] to set the charging time (fig.2).
3. Pull the cap of the charging gun lightly and completely, then insert the charging gun's head into your vehicle's outlet (fig.3).
⚠ Ensure the charging gun's head is fully inserted until it's locked.
4. The device starts charging automatically. (If the "Auto-start" button in the web-control page is turned off, you have to use the web-control page to start charging, which is the anti-theft charging function. See page 13.)

7

How To Stop Charging

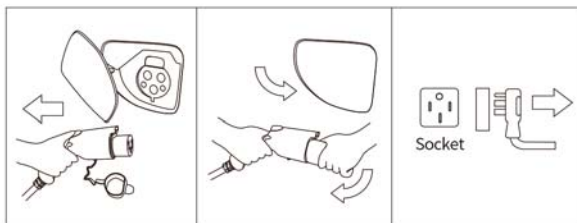


Fig4

Fig5

Fig6

1. Press the button and disconnect the charging connector from the vehicle inlet(Fig.4).
2. Close protective cap of EV and put on the protective cap of charging connector(Fig.5).
3. Disconnect the plug from the power-supply socket (Fig.6).

Some car models will lock the charging gun head when it is powered on. It is necessary to power off and then pull out the the charging gun.

Current Mode Switching

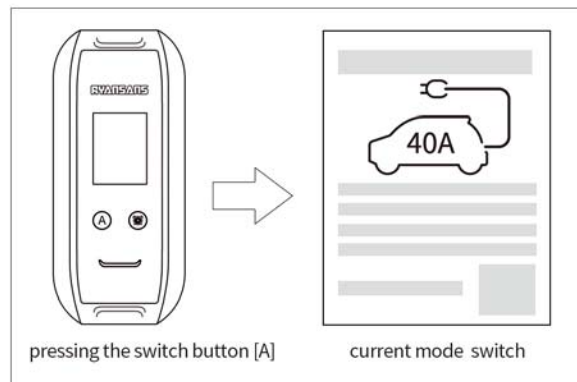


Fig7

1. Please insert the power-supply plug into the power-supply socket firmly and disconnect the vehicle, then current mode can be switched by pressing the switch button [A].
2. The 40A device support 3 current switching mode of 24A/32A/40A. (Current switching numerical change in real time.)

Timing Charging Setting

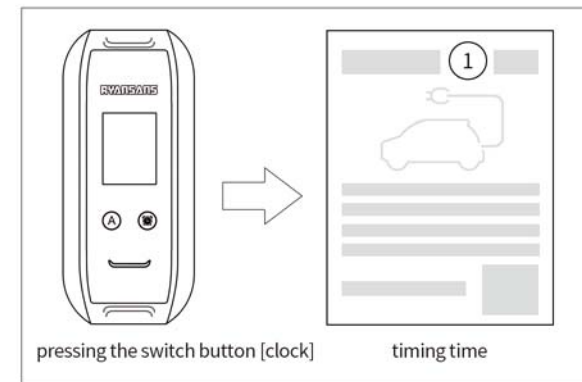


Fig8

1. Please insert the power-supply plug into the power-supply socket firmly and disconnect the vehicle, then timing charging can be set by pressing the switch button [clock];
2. The timing time increases by 1 hour when you press the button once.

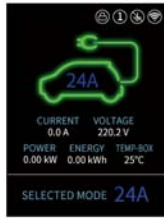
Introduction Of Screen Display



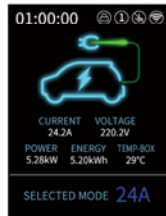
Loading



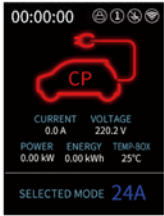
Unconnect



Connected



Charging



Error

WiFi function usage

1. Please turn on the mobile wifi and connect to the wifi name starting with 'RVD-', the original password is 12345678.
2. Please open the mobile browser (Quark Browser is recommended) and enter the IP address 192.168.4.1 the browser address bar, or use the browser to scan the code.



3. Start charging:



Main page



Mode setting



Time setting

WiFi function usage



Plug in the charging gun and click the start button



Charging



Charge finish

4. set up

Please click the set button in the upper left corner to enter the settings page. This page can be set to Auto-Start, view/clear the history energy, and change the wifi password, etc.



Set "Auto-start" off, the anti-theft charging function will be turned on.
Then, Plug-in the charging gun to start charging automatically is banned, you have to click the "Start" button in the web-control page to start charging.

Quality Assurance

RYANSANS Portable electric vehicle charging station level 2 is warranted to be free of defects in material and workmanship for a period of one year from the date of shipment.

This warranty does not cover any damage due to the following cases:

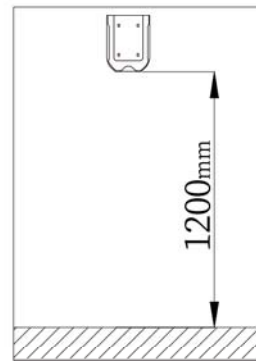
1. Improper handling, installation, use and maintenance by users
2. The break down and the failure caused by the force majeure, such as direct damage and inability to function properly caused by natural disasters
3. Products are flied with water or soaked in water

This warranty does not cover the cost of freight to return the device to 4Autolife.

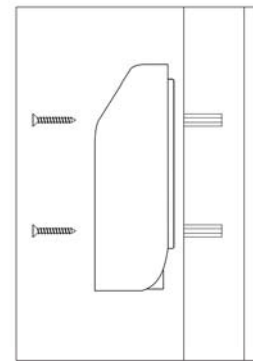
This warranty is only valid to the original purchaser of the device and is not transferable.

Fixing method

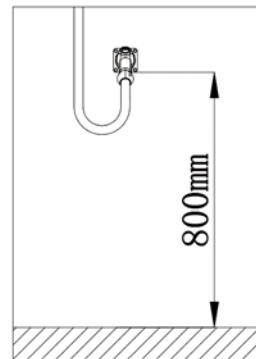
1. Locate and punch holes



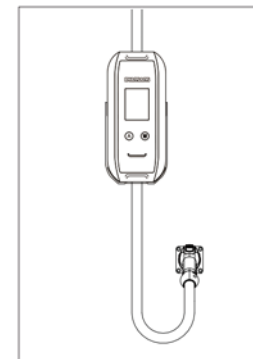
2. Install the fixed back



3. Install the charging gun base



4. Design sketch



FCC Caution.

§ 15.19 Labelling requirements.

This device complies with part 15 of the FCC Rules. Operation is subject to the following two conditions: (1) This device may not cause harmful interference, and (2) this device must accept any interference received, including interference that may cause undesired operation.

§ 15.21 Information to user.

Any Changes or modifications not expressly approved by the party responsible for compliance could void the user's authority to operate the equipment.

§ 15.105 Information to the user.

Note: This equipment has been tested and found to comply with the limits for a Class B digital device, pursuant to part 15 of the FCC Rules. These limits are designed to provide reasonable protection against harmful interference in a residential installation. This equipment generates uses and can radiate radio frequency energy and, if not installed and used in accordance with the instructions, may cause harmful interference to radio communications. However, there is no guarantee that interference will not occur in a particular installation. If this equipment does cause harmful interference to radio or television reception, which can be determined by turning the equipment off and on, the user is encouraged to try to correct the interference by one or more of the following measures:

- Reorient or relocate the receiving antenna.
- Increase the separation between the equipment and receiver.
- Connect the equipment into an outlet on a circuit different from that to which the receiver is connected.
- Consult the dealer or an experienced radio/TV technician for help.

RF warning for Mobile device:

This equipment complies with FCC radiation exposure limits set forth for an uncontrolled environment. This equipment should be installed and operated with minimum distance 20cm between the radiator & your body.
