



(PUR) POP UP RECEPTACLE INSTALLATION INSTRUCTIONS

FOR CATALOG NUMBERS: PURBTWC Series

IMPORTANT: Read all instructions before installing the PUR SERIES

PRIOR TO INSTALLATION

- Contact a local electrical inspector to make sure that this product meets or exceeds all local electrical codes (electric codes may vary by location).
- Make sure there is adequate space to install (see below: *CUT OUT AND MOUNTING STEPS*)
- Disconnect and turn off all power sources.

CONDITIONS:

- For indoor use only.
- This product is designed for countertops, desktops, and similar surfaces (this product is not suitable for floor use).
- All non GFI units must be wired to a GFCI circuit breaker if being installed in a kitchen, bathroom or any other area where the potential for water is present.
- ELECTRIC CORD AND PLUG MAY NOT BE CUT OFF FOR HARDWIRING. DOING SO WILL NEGATE ANY WARRANTY OR RETURN OF MATERIAL.
- Only licensed, insured, and bonded electrical contractors should install the PUR series.
- These products have no field serviceable parts. If the product is damaged, it must be returned to the factory. Any attempt to alter this product in any way may cause electrocution.
- Lew Electric accepts no responsibility if the above conditions are not followed.

CUTOUT AND MOUNTING STEPS

- -Select the desired location of the countertop or desktop at least 10" from stove top or other heating sources.
- -The selected location must be at least 20mm (13/16") away from the edge of the countertop or similar surface.
- -The mounting surface must be between 9.5mm (3/8") and 55mm (2 3/16") thick and have the below clearances:

UL listed electrical outlet box must be installed underneath the countertop by a licensed electrician.

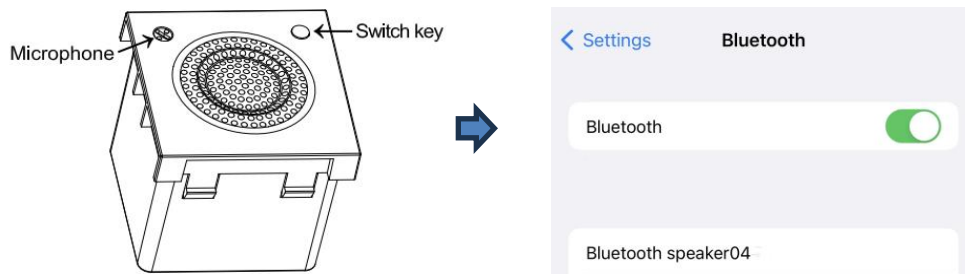
1. Cut hole in surface of countertop 95.25 mm (3 ¾ "). **MAXIMUM HOLE SIZE NOT TO EXCEED 4 INCHES**
2. Remove plastic threaded locking flange from PUR unit.
3. Feed power cord through hole in countertop first, followed by PUR unit, pushing down until black gasket resting on countertop.
4. Feed power cord through plastic locking flange and thread flange counterclockwise until locked in place against back of countertop.

SEE BACKSIDE FOR REST OF INSTRUCTIONS

5. Plug power cord into electrical outlet box underneath countertop.
6. Remove plastic protective film from cover and discard.
7. To open pop up feature, press firmly on cover. Unit will deploy upward approximately 1" initially, then pull cover upward until unit locks into place.
8. To close device, push the red plastic locking tab and push down on cover until unit locks.

NOTE CONNECTION STEPS FOR BLUETOOTH MODELS:

1. Long press the switch button for 3 seconds, when you hear the sound of "power on", it means that the Bluetooth speaker has been activated. (Also, Long press the switch button for 3 seconds, when you hear the sound of "power off", it means that the Bluetooth speaker has been turned off.)



2. The "Bluetooth speaker04" will be found in the Bluetooth options of the paired device.
3. Click "Bluetooth Speaker04" to complete pairing.

NOTE: Countertop unit must be cut in as specified. In order for unit to deploy, the metal flange and black neoprene gasket must be on top of countertop to create counter pressure. Attempting to cut a larger hole to draw down the cover closer to the countertop will not allow the cover to deploy as there is not enough counter pressure to make the unit release. There will be a 3/16" gap when cover is closed, however, the watertight rating will still be valid as no liquid or solid can penetrate the gasket. A matching outer flange trim rings ships with every PUR, it can be installed to provide a more contoured look with the countertop. However, this look is personal preference, you may like the look with or without it. If you wish to install, place a small bead of silicone on the bottom of the ring, then place on counter around pop up and allow 24 hours to dry.

For further instruction, please visit our website at www.lewelectric.com to see video of these types of units installed. Or, use your smart phone to read the QR code from the label on these devices.

This device complies with part 15 of the FCC Rules. Operation is subject to the following two conditions: (1) This device may not cause harmful interference, and (2) this device must accept any interference received, including interference that may cause undesired operation.

Caution: Changes or modifications to this unit not expressly approved by the party responsible for compliance could void the user's authority to operate the equipment.

NOTE: This equipment has been tested and found to comply with the limits for a Class B digital device, pursuant to part 15 of the FCC Rules. These limits are designed to provide reasonable protection against harmful interference in a residential installation. This equipment generates, uses and can radiate radio frequency energy and, if not installed and used in accordance with the instructions, may cause harmful interference to radio communications. However, there is no guarantee that interference will not occur in a particular installation. If this equipment does cause harmful interference to radio or television reception, which can be determined by turning the equipment off and on, the user is encouraged to try to correct the interference by one or more of the following measures:

- Reorient or relocate the receiving antenna.
- Increase the separation between the equipment and receiver.
- Connect the equipment into an outlet on a circuit different from that to which the receiver is connected.
- Consult the dealer or an experienced radio/TV technician for help.

To satisfy RF exposure requirements, a separation distance of **20** cm or more should be maintained between the antenna of this device and persons during device operation.

To ensure compliance, operations at closer than this distance is not recommended.