

DCZR-A19-SM12-2N

Model: WMCD A19-38

2
Pack

2 Years
Warranty

RGBCW

12
Watt

Full Color Smart WiFi Light Bulbs

Voice & APP Control



16 Million Colors
Tunable & Dimmable Light



Bluetooth



WiFi Control



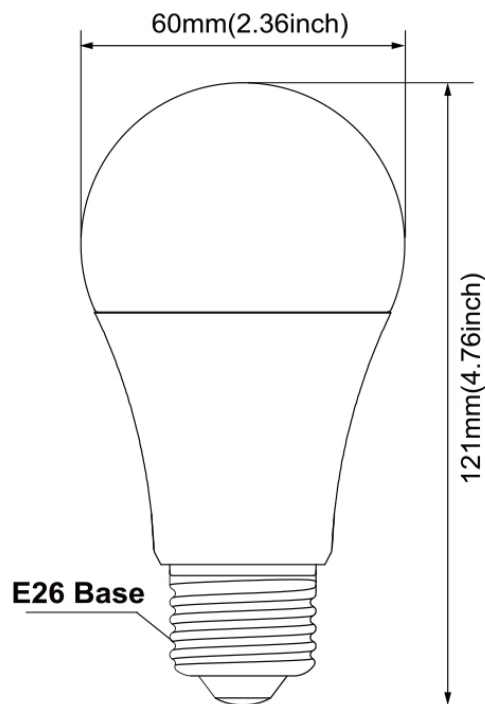
Smart Life



works with Alexa



works with the
Google Assistant



Environmental Condition

Operating Temp: -77°F~104°F
Operating Humidity: 10%~90%

Input Characteristics

Input Voltage	120VAC
Frequency	60Hz
Power	12W
Base Type	E26

Photometric Characteristics

CCT	RGB+2700-6500K
Luminous Flux	1100Lm
CRI (Ra)	>85
Beam Angle	200°
Lifespan	25000 Hours
Wireless Type	Wi-Fi 2.4GHz
Dimmable	Yes, Wi-Fi Control (Smart Life/Alexa/Google Assistant)
Waterproof	No
Ble	1M

- For more details, please sign in to Amazon and download the user manual from product link.

Precautions In Use

1. Read this manual before operation and keep it for future reference.
2. Keep children away from this product.
3. Do not stare at the light of this product for a long time.
4. Keep the bulb's surface clean.
5. LED bulb should be used in dry conditions.

Warning

1. Please use the bulb with a compatible dimmer.
2. Not Waterproof. Keep the bulb away from grease, water or other liquids.
3. Do not put the bulb in the overheating working condition or cast it into fire.
4. Shut off power before installation. If use the bulb improperly, there maybe a risk of electric shock.
5. Do not retrofit the product for warranty claim.

After-sales Service Guarantee

24-Month warranty is provided for this product from the date of purchase. If you have any problems with the product, please sign in to Amazon and contact us, Or E-mail us via dczrsupport@163.com.

Note: An order ID with detailed description and image is preferred when contacting our customer service, if possible.

Warranty

1. During the warranty period, we provide service including refund or replacement without charging if the product is used in accordance with its intended use.
2. The warranty does not cover:
 - (A) Failure or damage due to the improper use, repair or remodeling.
 - (B) Failure or damage because of falling.
 - (C) Failure or damage caused by fire, earthquake, flood, lightning and other natural disasters.
 - (D) Failure or damage when used other than its intended use.
 - (E) Failure or damage caused by the third-party products other than this device.

FCC Caution

1. Any Changes or modifications not expressly approved by the party responsible for compliance could void the user's authority to operate the equipment.
2. This device complies with part 15 of the FCC Rules. Operation is subject to the following two conditions: (1) This device may not cause harmful interference, and (2) this device must accept any interference received, including interference that may cause undesired operation.

IMPORTANT NOTE:

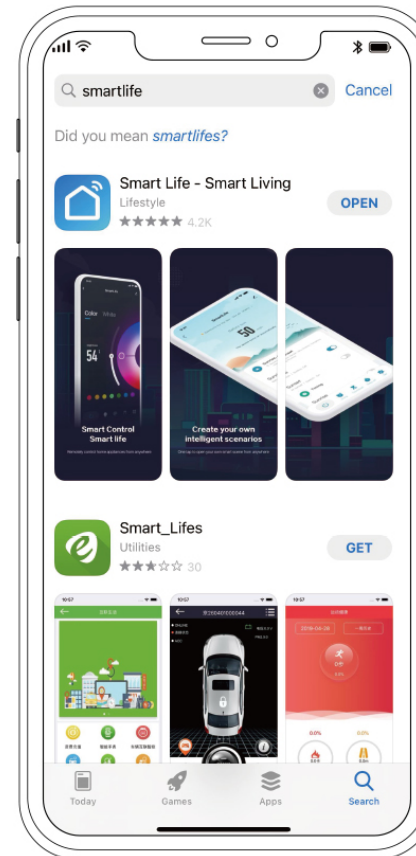
Note: This equipment has been tested and found to comply with the limits for a Class B digital device, pursuant to part 15 of the FCC Rules. These limits are designed to provide reasonable protection against harmful interference in a residential installation. This equipment generates, uses and can radiate radio frequency energy and, if not installed and used in accordance with the instructions, may cause harmful interference to radio communications. However, there is no guarantee that interference will not occur in a particular installation. If this equipment does cause harmful interference to radio or television reception, which can be determined by turning the equipment off and on, the user is encouraged to try to correct the interference by one or more of the following measures:

- Reorient or relocate the receiving antenna.
- Increase the separation between the equipment and receiver.
- Connect the equipment into an outlet on a circuit different from that to which the receiver is connected.
- Consult the dealer or an experienced radio/TV technician for help.

FCC Radiation Exposure Statement

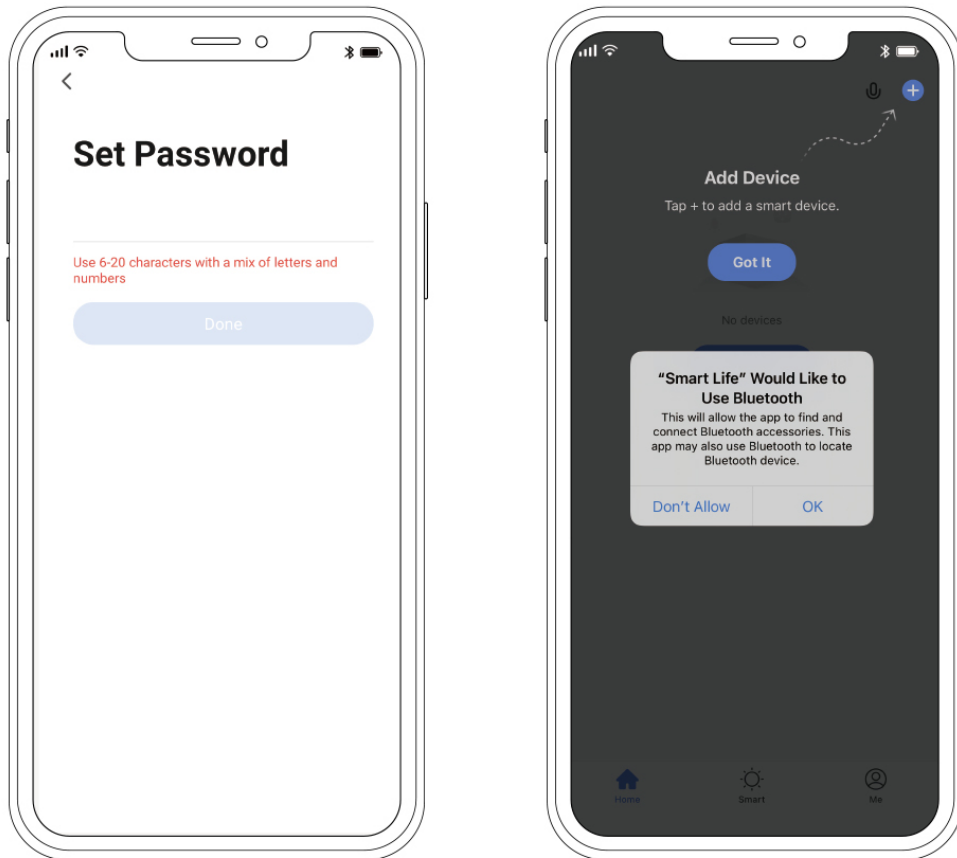
This equipment complies with FCC radiation exposure limits set forth for an uncontrolled environment. This equipment should be installed and operated with minimum distance 20cm between the radiator & your body.

Step 1: Search and download 'Smart Life' from App Store or Google play. Or scan the QR code below to download.



Step 2: Register

1. Make sure your WiFi network is 2.4 GHz and connected. Create a new account on Smart Life APP and log in.
2. Please enable the Smart Life APP to get your Bluetooth while using it.

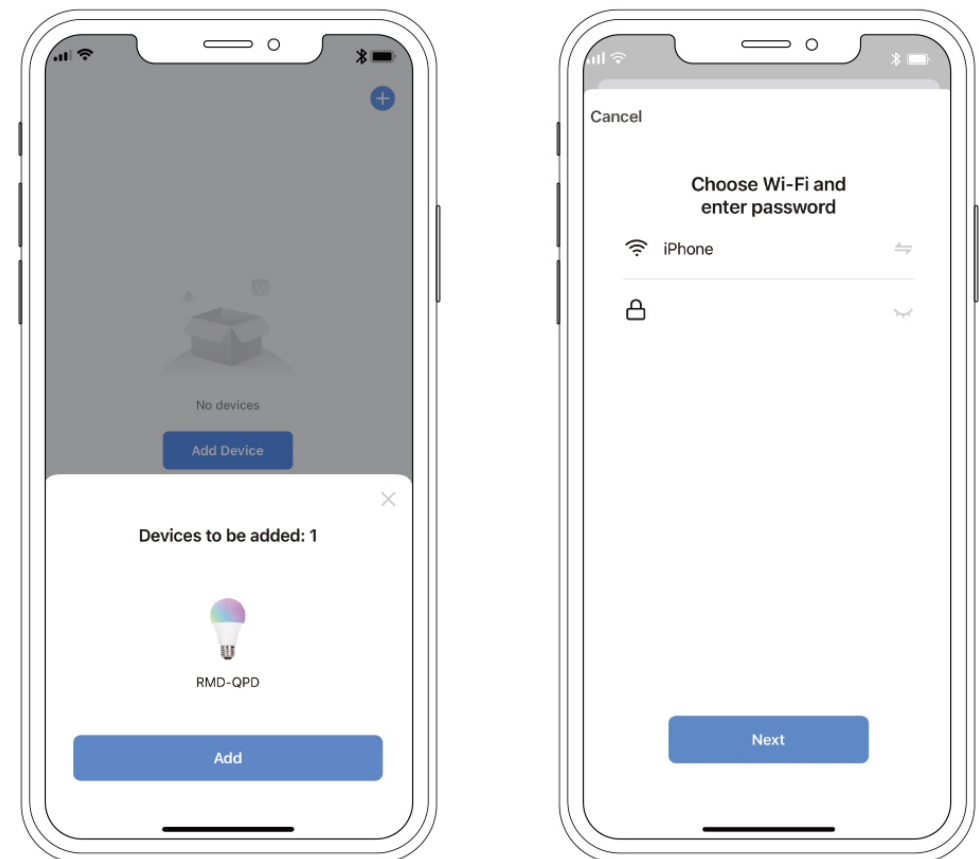


Power off 10s, then power on, turn on-off-on-off-on until the light is blinking or breathing rapidly.

Step 4: Add Device

- ▼Auto Scan or Add Manually
- ▼Auto Scan

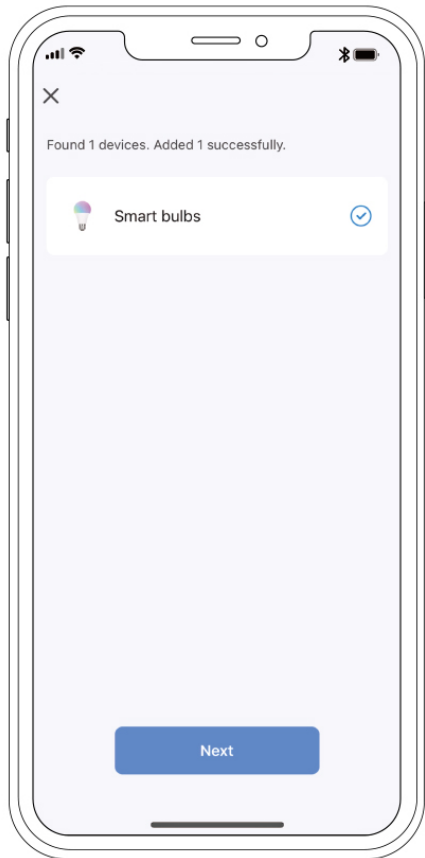
1. The device in the connecting state will be displayed "Devices to be added".
2. Tap on "Add" and confirm your network again.



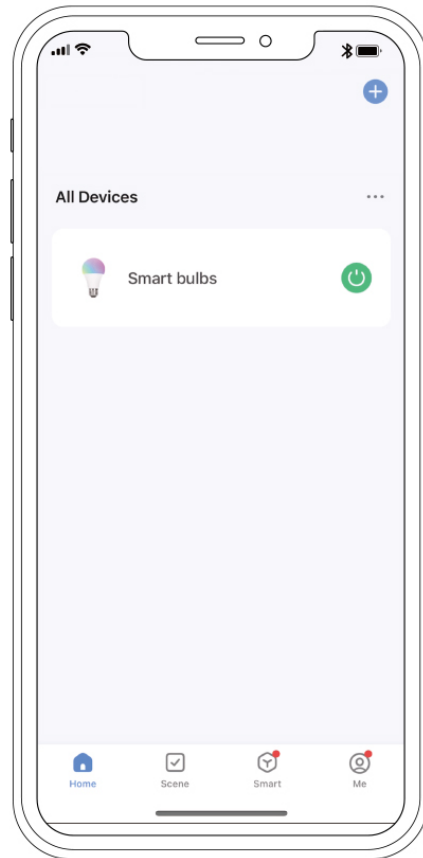
Step 4: Add Device

▼Auto Scan

3. The light starts to connect until it displays 100% complete.



4. Tap on "Done" and now you can use Smart Life APP to control your light.



If your device can't be automatically discovered, you can add it manually.

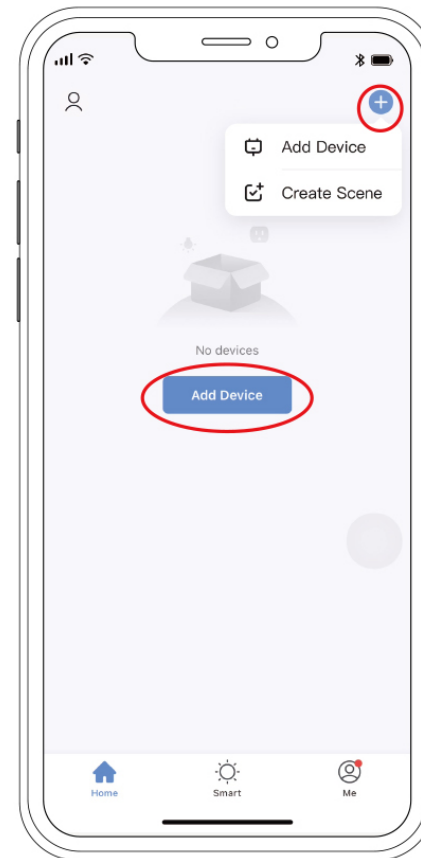
Step 4: Add Device

▼Auto Scan or Add Manually

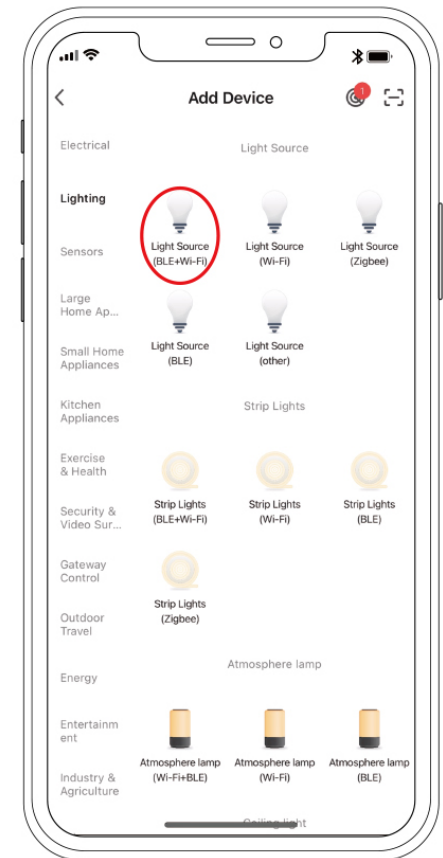
▼Add Manually

▼Turn Off Bluetooth

1. Tap on "Add Device".



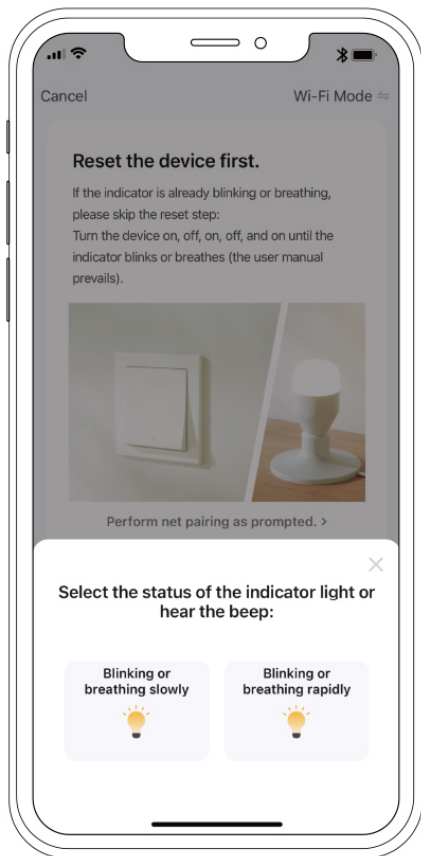
2. Add "Light Source (BLE+Wi-Fi)" device.



Step 4: Add Device

▼ Add Manually

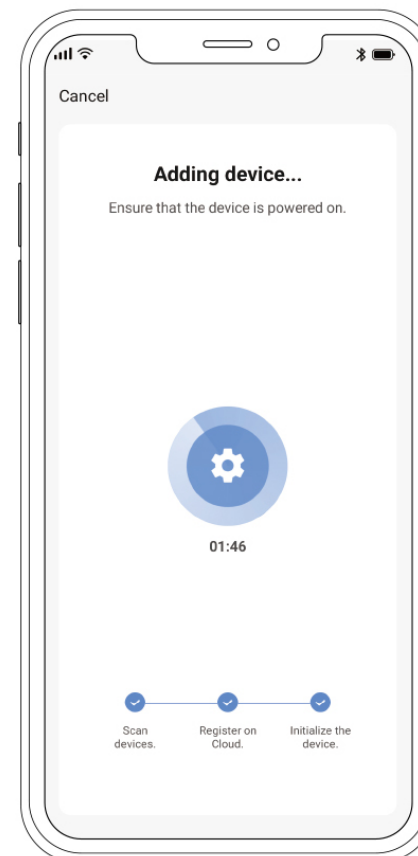
3. Select the status of the indicator light and tap “**Blinking or breathing rapidly**”. If the light is not blinking or breathing automatically, please reset the light with on-off-on-off-on-off-on again until the light breathing rapidly.



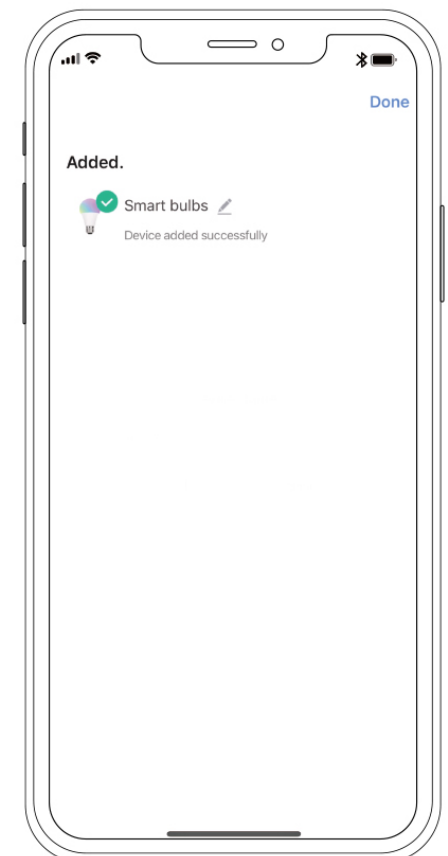
Step 4: Add Device

▼ Add Manually

4. The light starts to connect and wait for the completion of adding the device.



5. Tap on “Done” and now you can use Smart Life APP to control your light bulb.



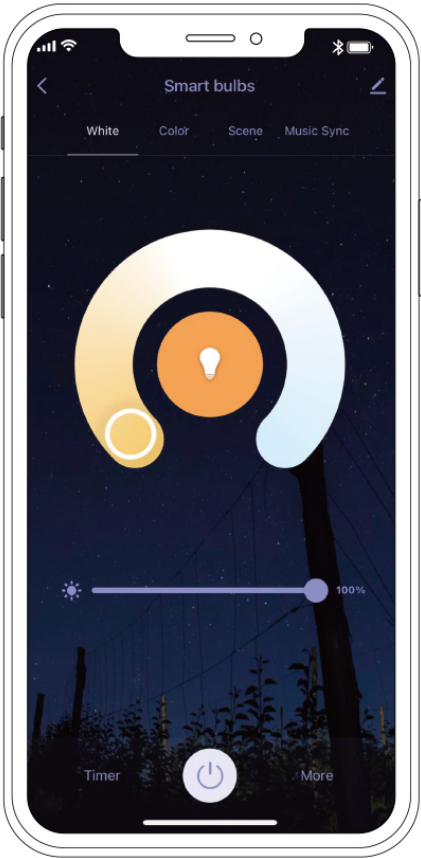
Features

Dimming

Slide the dimming bar up or down to set the brightness level from 100%-10%.

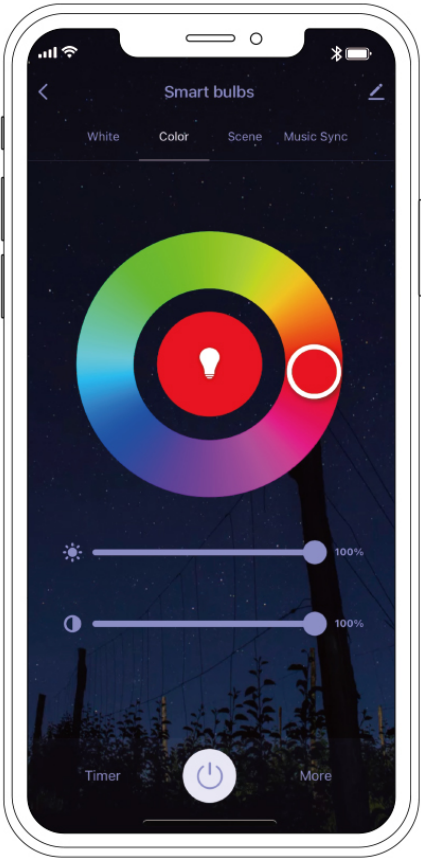
Tunable White

Use the round slider to adjust color temperatures from 2700K to 6500K.



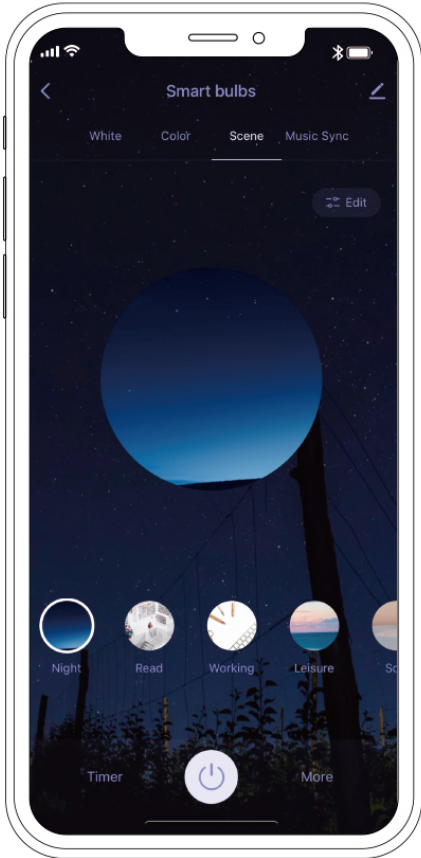
Color Changing

Use the round slider to adjust the desired color.
Slide the brightness and saturation bar to adjust the color.



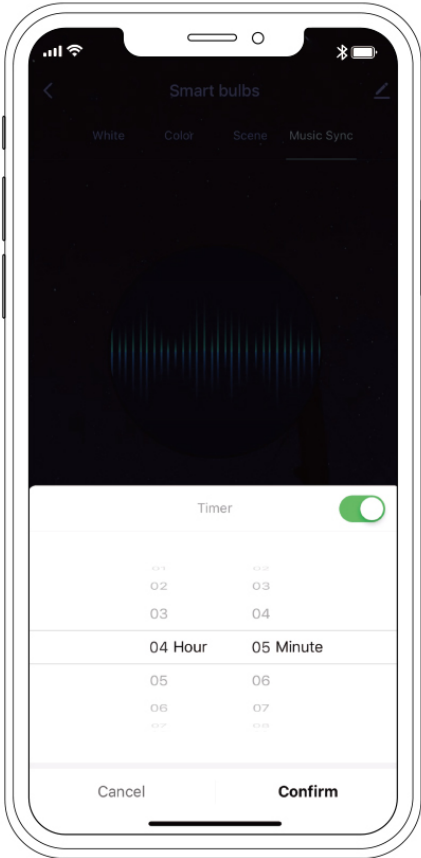
Scenes

Tap on scene and choose your desired scenes from 8 default scenes.



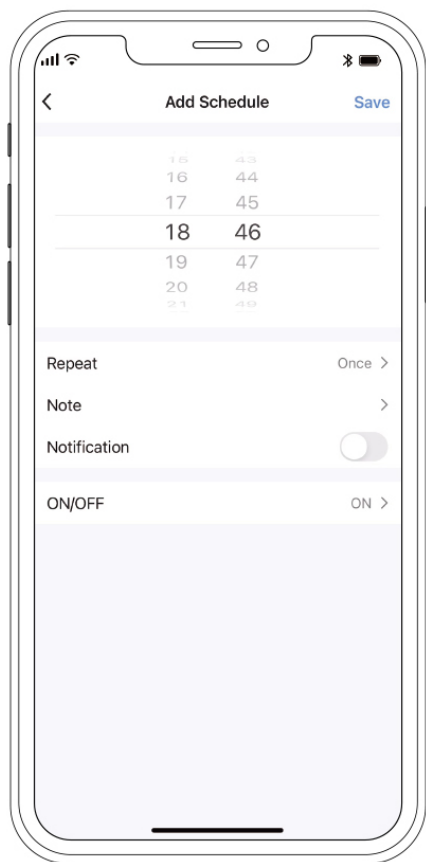
Timer

Use the timer to set your light to automatically turn on and off whenever you want.



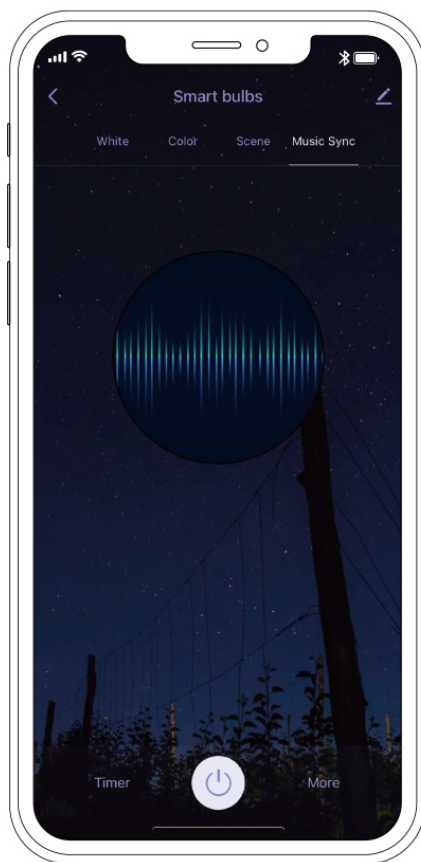
Schedule

Choose a start time to schedule to repeat, then tap Save.



Music Sync

Turn on the music and the bulb will change the color with the rhythm.



Note:

1. In order to ensure that the product can be used normally, the installation location of the product should be as close as possible to the WiFi signal source to ensure that its signal strength is $\geq -60\text{dBm}$.
2. When operating the APP, please avoid frequent and fast operations, because such operations will produce a large amount of data transmission, resulting in the possibility of data loss, which in turn will make the APP operation not smooth, and even the phenomenon of stuck.
3. If you encounter the situation where the product cannot be operated immediately or the APP is stuck, you can try the following operations: (1) Return the APP to the main interface, and then pulls down to refresh, and then enters the operation interface for operation; (2) Completely close the APP program, wait for a few seconds and then reopen it for operation.
4. When group control, because the control signal is sent from the cloud in turn to the terminal product equipment when multiple products receive data, there will be data out of sync, which is a normal phenomenon.

Made in China