



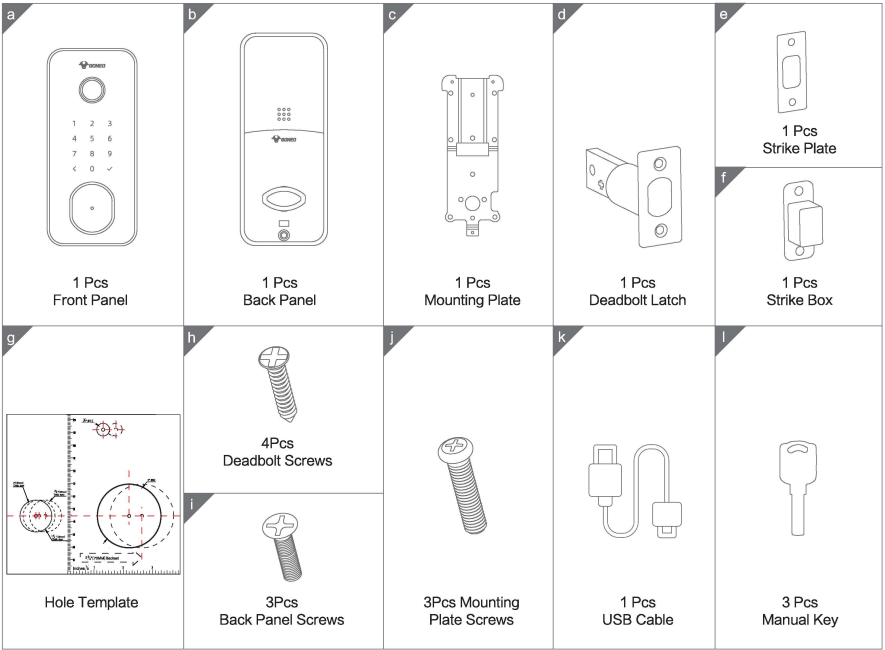
# ELECTRONIC LOCK

Smart Door Lock GNK-SA01

Model No.: GNK-SA01  
User Guide

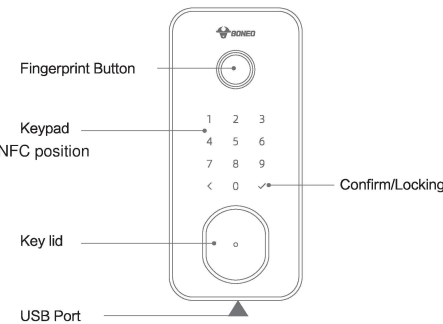
## PACKING ACCESSORIES

Please check the packing box and accessories when you got the lock in hand.

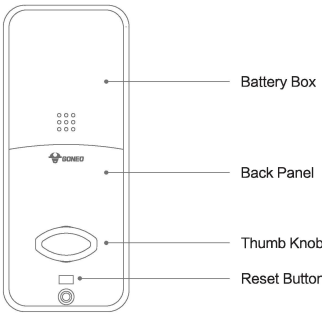


## PRODUCT SPECIFICATION

Front Panel



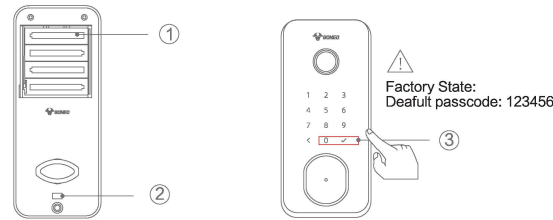
Back Panel



## TO OPEN AND CLOSE

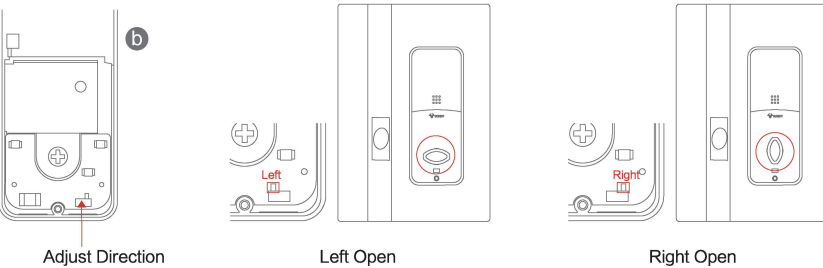
Enter the valid passcode to open the door.  
Long press the button “<” to close the door when the keypad is not activated.

## RESET TO FACTORY STATE



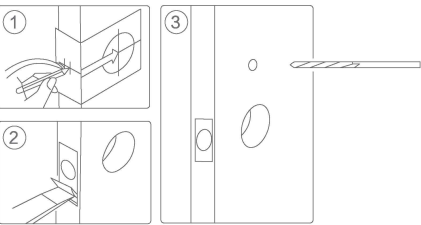
Steps	Operation	Sound tip	Note
1	Remove and install a battery		Do next step in 10 seconds
2	Press "Reset Button" over 10 seconds	Please input initialization passcode	
3	Input 000✓	Deleting administrator successful	

## INSTALLATION GUIDES



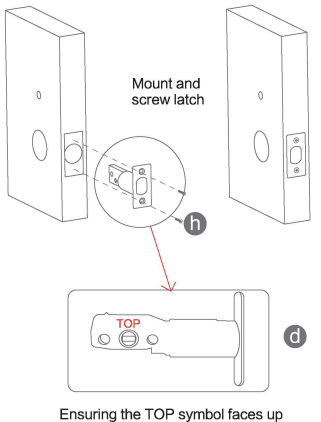
## DOOR INSTALLATION

Drill Holes



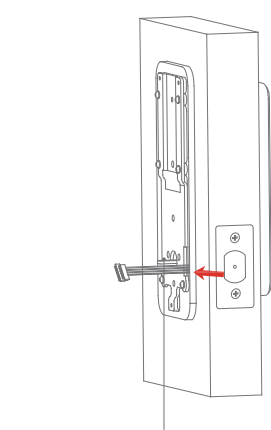
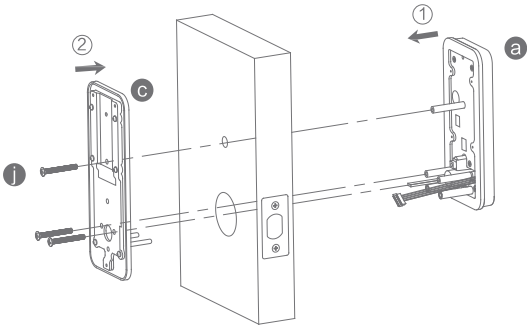
Based on the provided hole drawing template (separated sheet) to drill holes.

Latch Installation



LOCK BODY INSTALLATION

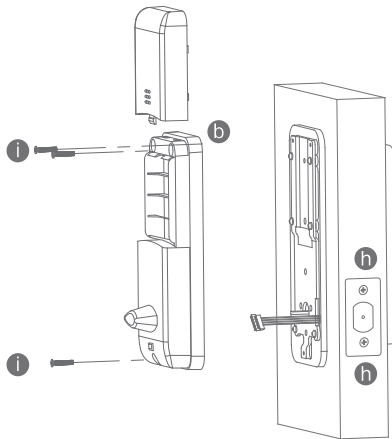
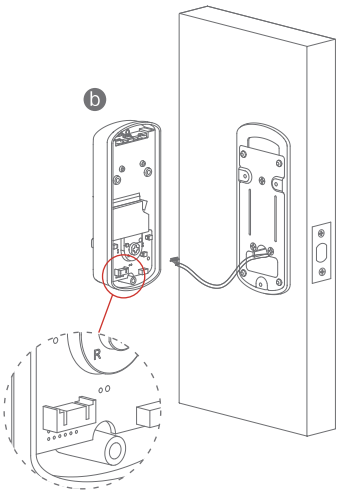
- ① Fix the front panel on the door and cross the cable through the hole.  
Make sure the cylinder ring shall be horizontal position.
- ② Cross the cable through the mounting plate, and fix the gasket with the front panel.



The front lock wire should be routed through this hole

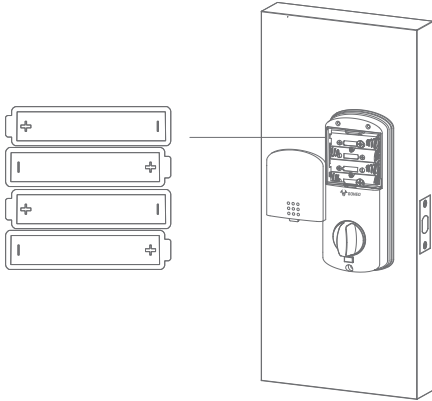
- ③ Connect the cable with the connector on the PCB board.

- ④ Fix the back panel with the screw as the photo.



ASSEMBLE THE BATTERY

Put 4pcs AA alkaline batteries into the battery box, notice the polarity ( + / - )



TTLOCK APP SETTINGS

Please download the TTLock on Apple store or Google play.  
Also you can scan the QR code below to download the APP directly.



Please connect to App immediately after resetting.  
App cannot be used after entering password.

- NOTICE: FCC Statement**  
This device complies with Part 15 of the FCC Rules. Operation is subject to the following two conditions: (1) this device may not cause harmful interference, and (2) This device must accept any interference received, including interference that may cause undesired operation.  
FCC ID: 2A7MC-GNKSA01
- WARNING:** Changes or modifications to this unit not expressly approved by the party responsible for compliance could void the user's authority to operate the equipment.
- NOTICE:** This equipment has been tested and found to comply with the limits for a Class B digital device, pursuant to Part 15 of the FCC Rules. These limits are designed to provide reasonable protection against harmful interference in a residential installation. This equipment generates uses and can radiate radio frequency energy and, if not installed and used in accordance with the instructions, may cause harmful interference to radio communications.

However, there is no guarantee that interference will not occur in a particular installation. If this equipment does cause harmful interference to radio or television reception, which can be determined by turning the equipment off and on, the user is encouraged to try to correct the interference by one or more of the following measures:

- ☐ Reorient or relocate the receiving antenna.
- ☐ Increase the separation between the equipment and receiver.
- ☐ Connect the equipment into an outlet on a circuit different from that to which the receiver is connected.
- ☐ Consult the dealer or an experienced radio / TV technician for help.

OPERATION STEPS

Setting up the Smart Lock	Steps	Operation	Sound Tip	Note
Connect the app	1	Download the TTLock on Apple store or Google play		You can scan the QR code on box
	2	Reset the lock to factory state	Please add a bluetooth administrator	The detailed steps are in "3 RESET TO FACTORY STATE"
	3	Open the TTLock App→Add Lock→Door Lock→Next→Choose the Lock→Assign a Name	Adding administrator successful	①The administrator passcode will be upgraded after connected App ②The effective distance of APP connection <6,56ft / 2mm
How to find the administrator's passcode after connected App		Settings→Basics→Admin Passcode		
Change the administrator passcode	1	Press <12v/ button	Please input administrator's passcode	
	2	Input administrator's passcode and ✓ (Default passcode: 123456, only not connected App)	Please input new administrator passcode	The administrator passcode will be upgraded after conneted App
	3	input a new passcode and ✓	Please input again	
	4	input a new passcode and ✓	Operation successful	
Enroll user password/fingerprint	1	Press <80v/ button	Please input administrator's passcode	
	2	Input administrator's passcode and ✓	Please input fingerprint or passcode	
	3	Touch the fingerprint button 4 times or input a new passcode and ✓ 2 times	Please input again Input successful	The button indicator turns green once succeeded.
	4	Press <	Exit setting mode	
Delete all fingerprints	1	Press <70v/ button	Please input administrator's passcode	
	2	Input administrator's passcode and ✓	Operation successful	
Delete all passcode (except the administrator)	1	Press <71v/ button	Please input administrator's passcode	
	2	Input administrator's passcode and ✓	Operation successful	
Locking it from outside		Press ✓ button over 2 seconds	Locked	No password required

Gongniu Group Co., Ltd.  
East Industrial Zone, Guanhaiwei Town,  
Cixi City, Zhejiang Province, China  
@ Gongniu Group Co., Ltd.  
All rights reserved by Gongniu Group Co, Ltd.  
Reproduction in whole or in part is prohibited.

Customer Service: support@goneohome.com

