

USER MANUAL

PRODUCT DESCRIPTION



01 DOWNLOAD APP

First, Download the T-MATER on your smartphone through Google play or APP store



T-METER



GET IT ON

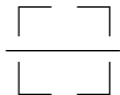
Google Play



Download on the

App Store

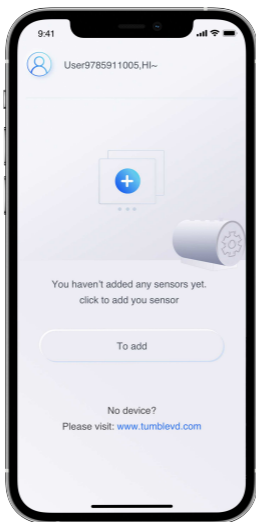
You can also download it by scanning the QR code



Support IOS
and Andriod

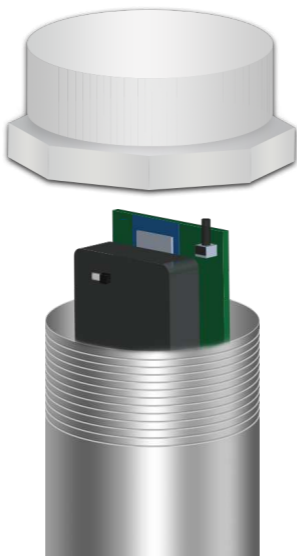
02 ADD YOUR T-METER SENSOR

Tap these add buttons, and follow the steps to add your T-meter sensor



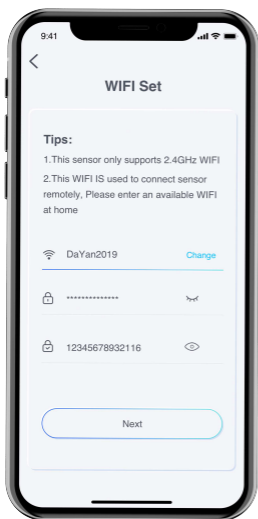
03 TURN ON THE T-METER SENSOR

Open the sensor cap by rotating it, Then move the battery switch to the “ON” position.



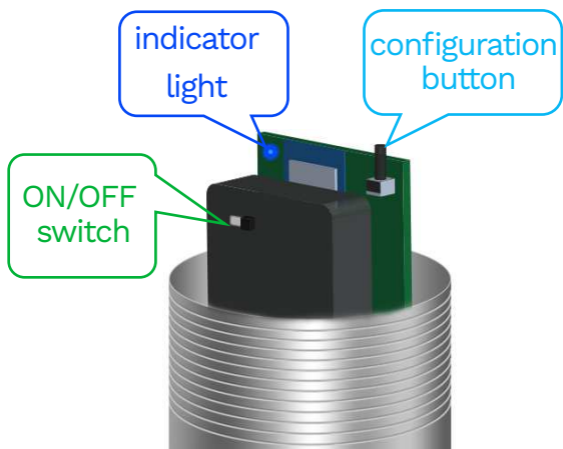
04 SELECT THE HOME WIFI:

T-Meter needs to connect to your home network, please make sure your home network is available, and T-Meter **only supports 2.4GHz network**, please do **not try to connect with 5GHz network**.



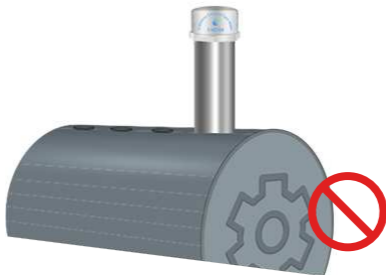
05

After the battery is **turned on** for 10 seconds, Press the **configuration button** 3 times within 3 seconds to set the T-Meter sensor to "waiting for connection mode" (the **indicator light** starts to flash)



06 INSTALLATION INSTRUCTIONS

Install the T-Meter sensor on the oil tank. **Do not install the T-Meter sensor on the extended oil pipe on the oil tank.**



07 CONFIGURE THE HOME WIFI

After the T-Meter sensor is successfully added, you can check the oil level in your tank and the oil usage of your family through T-meter APP.



ADD T-METER SENSOR FAILED?

1. Please confirm that your **WiFi password** is correct.
2. Please make sure you are on a **2.4GHz network**.
3. Please make sure that your home network is **an available WIFI, and has a strong signal**.
4. Make sure that you **press the configuration button 3 times as required (within 3 seconds) to keep the sensor in “waiting for connection mode”(the indicator light starts to flash)**

If you have any other questions, please **contact us: Service@tumblevd.com**

§ 15.19 Labelling requirements.

This device complies with part 15 of the FCC Rules. Operation is subject to the following two conditions: (1) This device may not cause harmful interference, and (2) this device must accept any interference received, including interference that may cause undesired operation.

§ 15.21 Information to user.

Any Changes or modifications not expressly approved by the party responsible for compliance could void the user's authority to operate the equipment.

§ 15.105 Information to the user.

Note: This equipment has been tested and found to comply with the limits for a Class B digital device, pursuant to part 15 of the FCC Rules. These limits are designed to provide reasonable protection against harmful interference in a residential installation. This equipment generates uses and can radiate radio frequency energy and, if not installed and used in accordance with the instructions, may cause harmful interference to radio communications. However, there is no guarantee that interference will not occur in a particular installation. If this equipment does cause harmful interference to radio or television reception, which can be determined by turning the equipment off and on, the user is encouraged to try to correct the interference by one or more of the following measures:

- Reorient or relocate the receiving antenna.
- Increase the separation between the equipment and receiver.
- Connect the equipment into an outlet on a circuit different from that to which the receiver is connected.
- Consult the dealer or an experienced radio/TV technician for help.

The device has been evaluated to meet general RF exposure requirement. The device can be used in portable exposure condition without restriction.