

User Guide

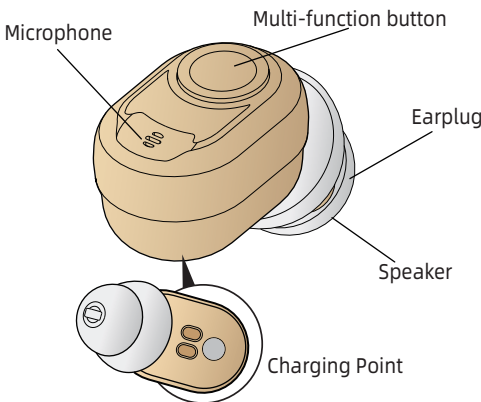
In-The-Ear Hearing Amplifier

Leader CN430S B



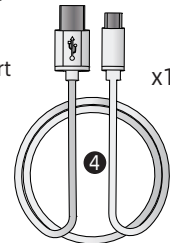
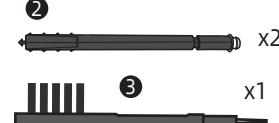
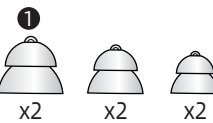
Read the user guide before using

Hearing Amplifier

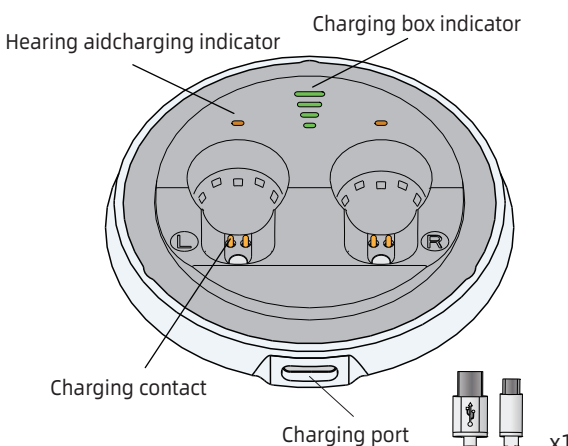


Accessories

- ① Earplugs s\m\l ② Cleaning brush
③ Wax Guard ④ Charging Cable



Charging Box

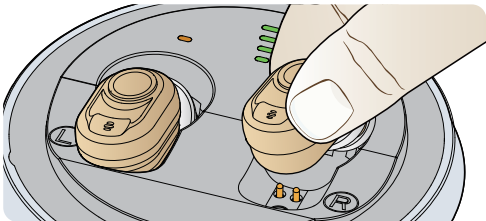


Technical Parameter

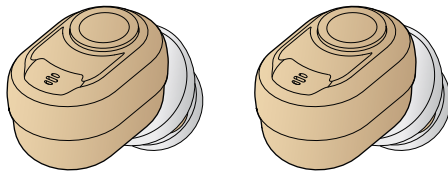
Max.OSPL90	HF Avg.OSPL90	Max gain	HFA Gain
≤115±3dB	106±4dB	≤35±3dB	31±3dB
Noise Level	Frequency Range	Battery Current	Total Distort
≤32dB	200-5000Hz	NA	≤3%

Power On/Off

- Power ON: Take the device out of the charging box.
- Power OFF: Put the device into the charging box.

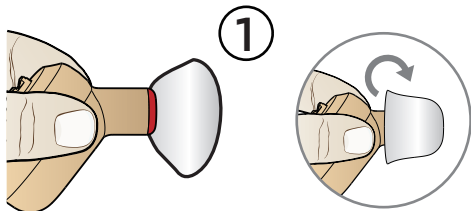


This hearing amplifier is a universal ITC and does not differentiate between left and right ears.

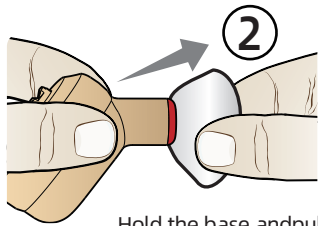


How to replace ear tips

At the time of purchase, an M size ear tip is attached. If it does not fit your ears, the sound is difficult to hear, or you hear beeping, replace the ear tips with the supplied S size or L size.

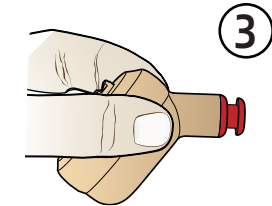


Turn the umbrella part of the ear tip over

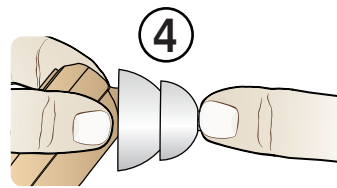


Do not pull the umbrella because it is thin. It may be damaged.

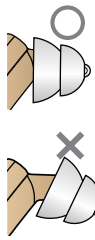
Hold the base and pull it off.



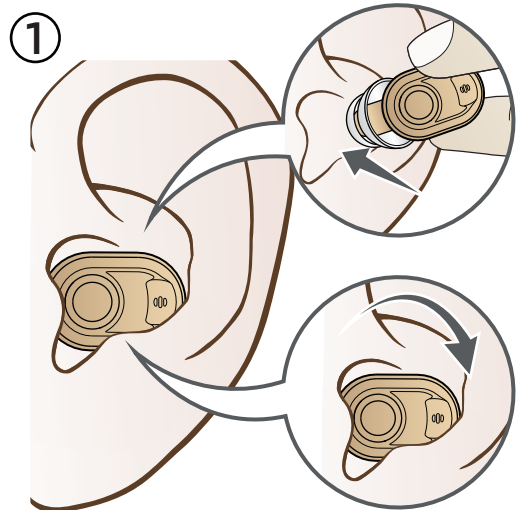
Hold the body with your dominant hand.



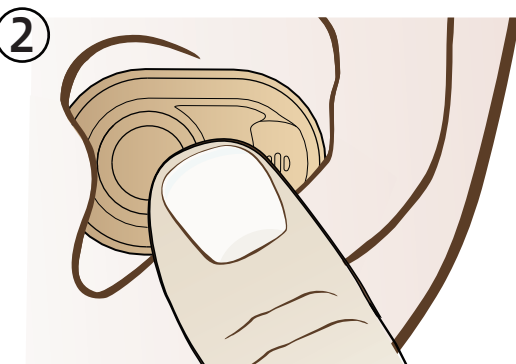
Insert the earplug in line with the hearing aid, then gently pull the earplug to make sure it fits securely.



How to use



Pinch the hearing aid with your thumb and index finger, and place the earplug side in the ear canal. Rotate the hearing aid to snap it into the ear.

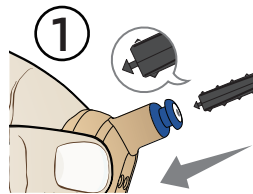


- Click the hearing aid button once: increase the volume by one level. Two beeps are heard, which is the highest volume level.
- Long press the hearing aid button for 3 seconds: One beep means simulation scene 1 (general mode). Two beeps mean simulation scene 2 (noise reduction). Three beeps mean simulation scene 3 (outdoors).

The hearing aid has a memory function, and there is no need to repeatedly adjust the volume and mode next time.

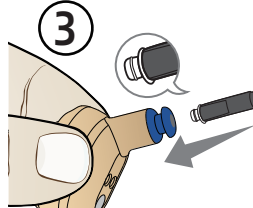
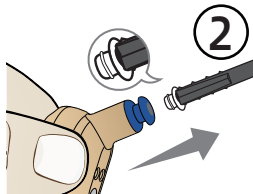
How to replace the earwax guard

Please replace the ear guard once every three months. Do not reuse your ear guard once used. There is a risk of falling off.



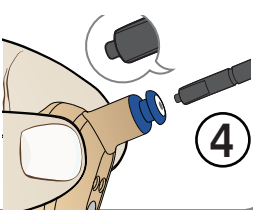
Remove the earplug and insert the "disassembly end" of the cerumen rod into the sound hole.

Pull out the rod and take out the old cerumen filter.



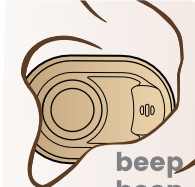
Select the cerumen rod and insert the part with the new cerumen strainer into the sound hole

Pull the rod out to make sure the new cerumen net is installed



Low battery reminder

Hearing aids have low battery warning signals that sound "beep, beep" until the hearing aid shuts down. If you hear a prompt tone, please charge it in time.



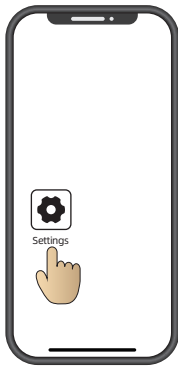
Bluetooth mode

Connection guide

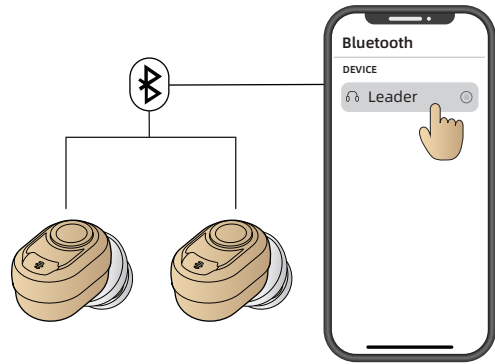
Please fully charge the hearing aid first.

Step 1: Make sure the hearing aid is turned on .

Step 2: Open "Settings" on your mobile device.



Step 3: Turn on the Bluetooth function of the phone, and search for Bluetooth devices to find the name of "Leader" , and then click "connect" to complete the connection.



(Note: For paired devices, there is no need to re-pair them next time, because they can be automatically connected when turned on.)

- 1. The Bluetooth/hearing aid mode can be switched back and forth freely.
- Listen to music and incoming calls, and automatically . switch the Bluetooth headset mode during a call.
- After the music is paused or the call is over, the phone will automatically switch to the hearing aid mode.
- When disconnected from the mobile phone, it will automatically switch to hearing aid mode.
- 2. If the hearing aid is not connected to the Bluetooth of the mobile phone for a long time, the Bluetooth function will be automatically turned off.Please restart your hearing aid and re-pair with your phone's Bluetooth.

3. Please keep it within 10 meters during use. Beyond this distance, the sound quality may deteriorate and the connection may be lost.

HA-Fit APP

Please download and install "HA-Fit" APP first.

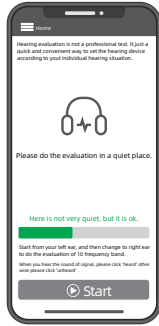
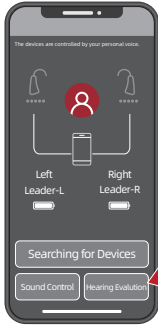
1. Connect the APP

- Step 1: Turn on your hearing aid.
- Step 2: Turn on Bluetooth.
- Step 3: Open the HA-Fit APP.
- Step 4: Click the "Search Device" button.
- Step 5: After "searching for devices", the HA-Fit APP will automatically connect to the hearing aid, and the successful connection status is shown in the figure.



2. Hearing Evaluation

- With the Hearing Hearing Evaluation module, you can quickly set up your hearing aids according to your hearing characteristics.
- Step 1: Put on your hearing aid and turn it on.
- Step 2: Please do the assessment in a quiet place.
- Step 3: Click the "Listening Evaluation" button.
- Step 4: Follow the prompts to complete your personal listening assessment.
- Step 5: After completing your hearing evaluation, click the Auto-Optimize button and your hearing aids will be optimized based on your hearing score.



3. Hearing Evaluation

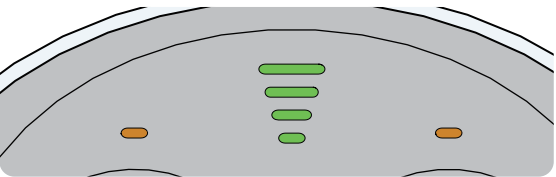
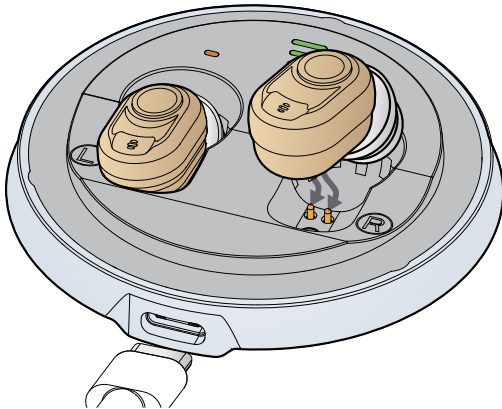
The HA-Fit app is designed to allow you to conveniently control your hearing aids remotely from your Android or Apple device at hand. HA-Fit app covers key features like changing programs.

- Step 1: Click the "Sound Control" button.
- Step 2: Enter the sound control interface, you can easily control the hearing aids, you can adjust various parameters, volume, program, frequency band, noise reduction...







How to charge

The charging box has the power storage function, put the hearing aid into the charging box, and the charging box will charge the hearing aid. When the hearing aid is charging, the charging indicator of the hearing aid will light up with orange light, and the orange light will be extinguished after it is full.



Charging box battery indicator			
100%	75%	50%	25%
When the power of the charging box is less than 25%, the indicator light flashes.			

Hearing aid charging indicator					
	L	Orange light		R	
	L	Orange off		R	
Charging			Fully Charging		
When the hearing aid is fully charged ,it will automatically turn off the light					

FCC Statement

This equipment has been tested and found to comply with the limits for a Class B digital device, pursuant to Part 15 of the FCC Rules. These limits are designed to provide reasonable protection against harmful interference in a residential installation. This equipment generates uses and can radiate radio frequency energy and, if not installed and used in accordance with the instructions, may cause harmful interference to radio communications. However, there is no guarantee that interference will not occur in a particular installation. If this equipment does cause harmful interference to radio or television reception, which can be determined by turning the equipment off and on, the user is encouraged to try to correct the interference by one or more of the following measures:

- Reorient or relocate the receiving antenna.
- Increase the separation between the equipment and receiver.
- Connect the equipment into an outlet on a circuit different from that to which the receiver is connected.
- Consult the dealer or an experienced radio/TV technician for help.

This device complies with part 15 of the FCC Rules. Operation is subject to the following two conditions:

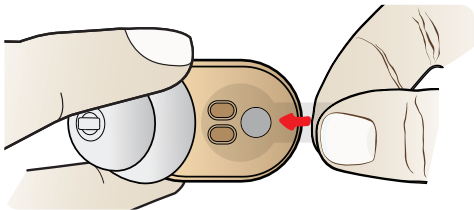
(1) This device may not cause harmful interference, and (2) this device must accept any interference received, including interference that may cause undesired operation.

Changes or modifications not expressly approved by the party responsible for compliance could void the user's authority to operate the equipment

FCC ID:2A7JZ-001

Notes and Tips

1. For the first use, please remove the film from the device.



- 2. This product is not waterproof, therefore the user must take care to prevent water from entering the product.
- 3. When not in use for a long time, please put the product in the charging box and charge it once every 1-2 months to avoid damage to the battery.
- 4. Do not place hearing aids in the hot sun, near furnaces or other heat sources.
- 5. Avoid contact with chemicals or strong cleaners.