

# USER MANUAL

THT-X6

## Wireless Selfie Monitor Screen



Please read the manual carefully before use  
Recommend keeping this manual for future reference.



## OVERVIEW

This product is a smart phone rear camera selfie & vlogging monitoring screen. It provides a practical solution to easily and efficiently capture higher quality smart photos or videos using the phone's rear camera. It's suitable for YouTuber, Instagramer, Vlogger and any content creator who wants to create high-quality selfie photos or videos.

Using this screen, you can monitor your framing status and ensure you are in the shooting while using the phone's rear camera. The screen can be connected to a smartphone through wireless methods. It is equipped with a 4.02-inch screen that can help you monitor more clearly. It has functions such as 180 degree screen rotation, with camera button full screen or 1:1 screen switching, mirroring mode switching, etc. It has a compact structure, it's easy to carry and simple to use.

# SPECIFICATIONS

Input	5v/1A
Rated power	1.75W
Battery Capacity	1500mAh
Voltage	3.7V
Power Input Port	USB-C
Screen Size	4.02inch
Screen Resolution	480*800 Pixels
Direction of Screen Viewing Angle	Full Viewing Angle
Working Temperature	10 ~+40°C
Storage Temperature	10~ +40°C
Material	Plastic+Glass
Dimension	101*61*11mm
Weight	92g

# BUTTON INTRODUCTION



- ① Power on/off: Press and hold the “Power” button for 3s to turn on the screen on or off.
- ② Camera button: Press for Photo or Video ( Pair the Bluetooth of Monitor Screen: SmartScreen-\*\*\*\*\*)
- ③ Display Ratio Setting: Switch Between full screen mode and 1:1 mode.
- ④ Screen Rotation Function: Can be rotated 180 degrees for optimal viewing.
- ⑤ USB-C Charging Port
- ⑥ Charging Indicator
- ⑦ Resetting Button

## HOW TO USE

1. Turn on the smart phone's WI-FI
2. Press the “Power”button for 3s to turn on the wireless selfie monitor screen

## 3-1. Use for IOS AirPlay

(1)Swipe down from the upper right corner of your iPhone screen find the “Screen Mirroring” icon and click to open it

(2)In the seach list, find "SmartScreen-\*\*\*\*\*" and click to establish a connection with the device.

(3)Wireless projection successfully.



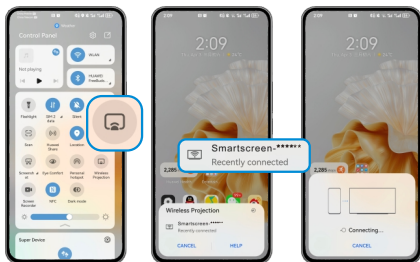
## 3-2. Use for Android Smartphone

(1)Swipe down from the upper right corner of your Phone screen find the “Wireless Projection” icon and click to open it

(2)Mobile prompt: Wireless Projection

“Smartscreen-\*\*\*\*\*”, Click the name of device. Then connecting.

(3)Wireless projection successfully.



## PLEASE NOTE

If you can not find the SmartScreen-\*\*\*\*\*name on your smart phone, please reset the product with thimble

Turn on the smart phone's WI-FI

## PACKAGE LIST

1 \* Wireless Selfie Monitor

1 \* User Manuel

**FC RoHS CE**    **UK  
CA**

Made in China



## FCC Statement

This equipment has been tested and found to comply with the limits for a Class B digital device, pursuant to Part 15 of the FCC Rules. These limits are designed to provide reasonable protection against harmful interference in a residential installation. This equipment generates uses and can radiate radio frequency energy and, if not installed and used in accordance with the instructions, may cause harmful interference to radio communications. However, there is no guarantee that interference will not occur in a particular installation. If this equipment does cause harmful interference to radio or television reception, which can be determined by turning the equipment off and on, the user is encouraged to try to correct the interference by one or more of the following measures:

- Reorient or relocate the receiving antenna.
- Increase the separation between the equipment and receiver.
- Connect the equipment into an outlet on a circuit different from that to which the receiver is connected.
- Consult the dealer or an experienced radio/TV technician for help.

This device complies with part 15 of the FCC Rules. Operation is subject to the following two conditions: (1) This device may not cause harmful interference, and (2) this device must accept any interference received, including interference that may cause undesired operation.

Changes or modifications not expressly approved by the party responsible for compliance could void the user's authority to operate the equipment.

.....

The device has been evaluated to meet general RF exposure requirement. The device can be used in portable exposure condition without restriction.

L'appareil a été évalué pour répondre aux exigences générales en matière d'exposition aux RF.  
L'appareil peut être utilisé en condition d'exposition portable sans restriction.

.....

- The device contains licence-exempt transmitter(s)/receiver(s) that comply with Innovation, Science and Economic Development Canada's licence-exempt RSS(s). Operation is subject to the following two conditions:

- (1) This device may not cause interference.
- (2) This device must accept any interference, including interference that may cause undesired operation of the device.
- L'émetteur/récepteur exempt de licence contenu dans le présent appareil est conforme aux CNR d'Innovation, Sciences et Développement économique Canada applicables aux appareils radio exempts de licence. L'exploitation est autorisée aux deux conditions suivantes :
  - 1. L'appareil ne doit pas produire de brouillage;
  - 2. L'appareil doit accepter tout brouillage radioélectrique subi, même si le brouillage est susceptible d'en compromettre le fonctionnement.