

尺寸:80*95mm

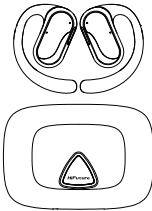
Open Ear TWS Air Conduction Headphone

User Manual

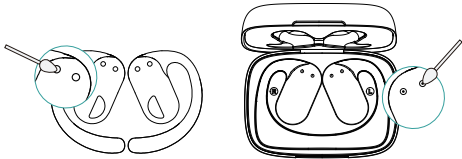
Model: S7

IMPORTANT NOTES

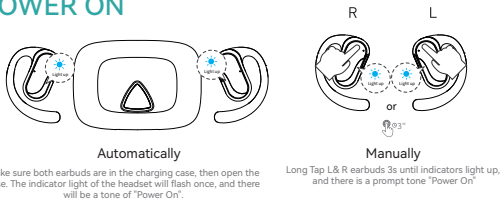
- 1 Before using the S7 wireless earbuds, please charge both the case and earbuds.
- 2 If both earbuds don't sync together, please reset the earbuds.



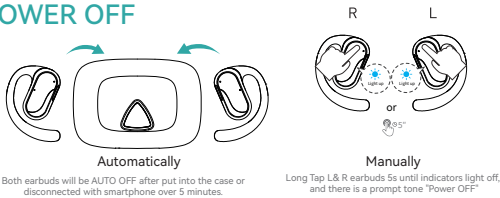
- 3 If the earbuds don't charge, please clean the charging slot on the case and the contact surface on the earbuds.



POWER ON



POWER OFF



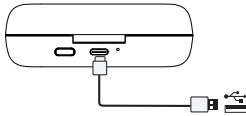
Note: When the charging case is at low battery or out of power, the earbuds will not automatically power on/off, please turn them on/off manually.

WEARING



CHARGING

Please fully charge the S7 after unboxing. Use Type-C cable to charge the charging case.



INDICATORS' DESCRIPTIONS

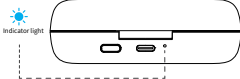
1. Earbuds

Power on	Power off	Pairing	Connected	Battery low	Fully charged
LED flashes white once	LED flashes white once	One of the earbuds flashes quickly	LED off	Low battery warning every 2 minutes	LED off



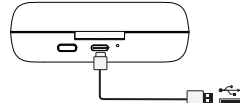
2.Without charging cable

Battery Low	When put earbuds into the case and charging
LED flashes red 3 times	LED flashes white 3 times then flash slowly for 10S, then LED off.



3. Charging by external TYPE-C cable

Charging	Fully Charged
LED flashes red slowly	White always on



FCC WARNING STATEMENT

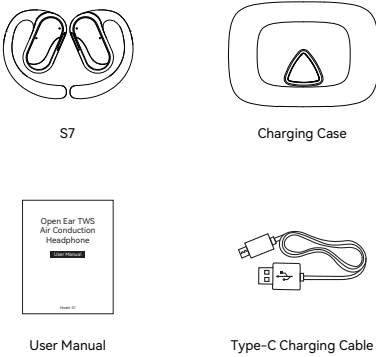
Changes or modifications not expressly approved by the party responsible for compliance could void the user's authority to operate the equipment. This equipment has been tested and found to comply with the limits for a Class B digital device, pursuant to Part 15 of the FCC Rules. These limits are designed to provide reasonable protection against harmful interference in a residential installation. This equipment generates uses and can radiate radio frequency energy and, if not installed and used in accordance with the instructions, may cause harmful interference to radio communications. However, there is no guarantee that interference will not occur in a particular installation. If this equipment does cause harmful interference to radio or television reception, which can be determined by turning the equipment off and on, the user is encouraged to try to correct the interference by one or more of the following measures:

- Reorient or relocate the receiving antenna.
- Increase the separation between the equipment and receiver.
- Connect the equipment into an outlet on a circuit different from that to which the receiver is connected.
- Consult the dealer or an experienced radio/TV technician for help.

This device complies with part 15 of the FCC Rules. Operation is subject to the following two conditions: (1) This device may not cause harmful interference, and (2) this device must accept any interference received, including interference that may cause undesired operation.

The device has been evaluated to meet general RF exposure requirement. The device can be used in portable exposure condition without restriction.

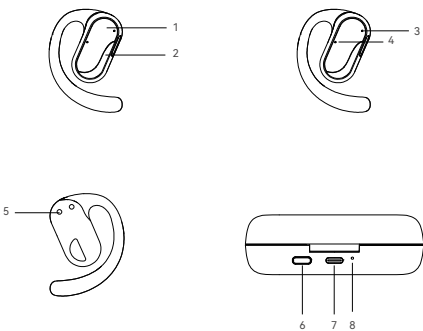
PACKAGE LIST



Please refrain from using any damaged components.
Contact your local authorised distributor/customer service.

DEVICE OVERVIEW

- 1. Tap area
- 2. Earbuds indicator light
- 3. Microphone
- 4. ENC microphone
- 5. Earbuds charging connector
- 6. Reset button
- 7. Type-C charging port
- 8. Charging case indicator light



TAP CONTROL

Play/Pause		Press one time(L/R)
Previous/Next track		Press and hold for 2 second (L/R)
Volume down/up		Press 2 times(L/R)
Activate Siri/Google Assistant		Press 3 times(L/R)
Answer/End a call		Press one time(L/R)
Reject a call		Press and hold for 2 second(L/R)
Factory Reset		Press 5 second

CONNECT THE EARBUDS

- 1 Power on the earbuds and turn on the Bluetooth in your phone.
- 2 Tap "S7" form the smartphone's Bluetooth menu. There's a voice prompt "You are Connect" after successful connection with smartphone.

HOW TO RESET THE EARBUDS

If your earbuds stop syncing with each other, please follow below steps to reset the earbuds:

- 1 Make sure the earbuds were disconnected with phone or other Bluetooth devices.
- 2 Put the two earbuds into the charging case, close the case and then open it again (you will hear "Power on, paring" prompt sound). Keep the charging case open during the reset process, long press the case button for 5S. The white LED on the case will flash 6 times, and the white LED on the earbuds will flash 3 times, which means the reset is successful and the pairing records are cleared.
- 3 The earbuds will sync together and enter the pairing mode automatically.

Manufacturer: Cheerstar Technology Co., Ltd
Addr.: 3F, Block B, Jiuwei 3rd Industrial Park, Hangcheng Street, Baoan District, Shenzhen, China

